

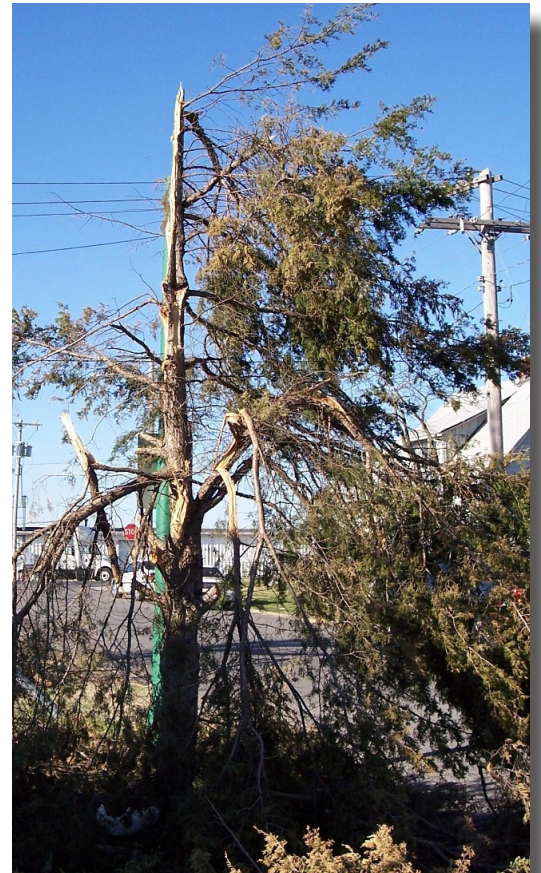
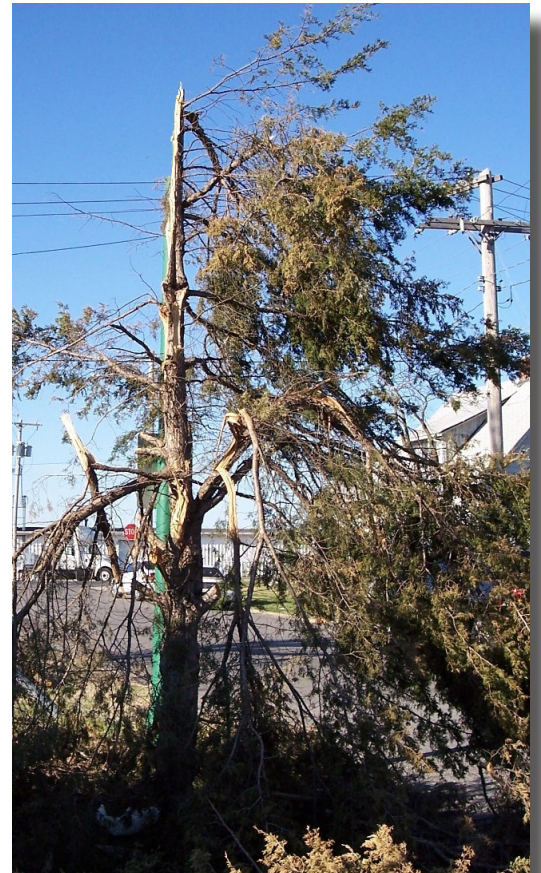
# Tree Care Before and After a Storm

Prepare your trees to withstand storm events, to help preserve the benefits you enjoy from having trees around your home. Know how to manage storm damaged trees, to help retain or even regain those many benefits we all enjoy.

Trees provide many benefits such as shade, reduced utility costs, and improved water and air quality. To provide those benefits safely, trees require proper maintenance and good care.

A healthy, well-maintained tree is better able to withstand weather events like ice storms, hurricanes, or strong winds that can cause some tree parts, or entire trees, to fail.

After a storm, some homeowners are reluctant to replace downed trees, while others choose to remove trees regardless of how well the tree survived the storm. Tree damage and tree failures can cause property damage, but the possibility can be managed through proper maintenance.

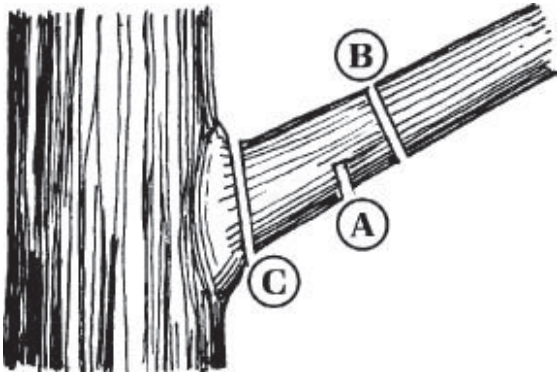






# BEFORE and AFTER a STORM

## Proper Pruning Cuts



### Three Cut Method for Larger Branches

A – 1st cut partially through from underside

B – 2nd cut fully through from topside

C – final cut just outside of branch collar

## Maintain your trees to enjoy their benefits now and after a storm.

Call an RI licensed arborist in Rhode Island before storms damage your trees. Become established as a regular customer. Trees that have been properly pruned and maintained tend to fare better than unmaintained trees. Arborists will be busy following a storm, but regular customers will likely receive more prompt attention before new clients.



### Other Helpful Publications and Web sites:

Why hire a Certified Arborist - [www.treesaregood.org/portals/0/docs/treecare/hire\\_arborist.pdf](http://www.treesaregood.org/portals/0/docs/treecare/hire_arborist.pdf)

Find An RI Licensed Arborist - [www.dem.ri.gov/programs/forestry/urban-forestry/arborist-lists.php](http://www.dem.ri.gov/programs/forestry/urban-forestry/arborist-lists.php)

Treating Storm Damaged Trees - <http://hort.ifas.ufl.edu/woody/storm-damage.shtml>

How To Prune (USFS) - [www.fs.usda.gov/naspf/sites/default/files/publications/htprunerev2012.pdf](http://www.fs.usda.gov/naspf/sites/default/files/publications/htprunerev2012.pdf)

General Pruning Techniques - <http://content.ces.ncsu.edu/general-pruning-techniques.pdf>

Mature Trees: Managing Risk - <http://hort.ifas.ufl.edu/woody/preventive-pruning.shtml>



For more information on urban and community forestry, please visit the RIDEM Division of Forest Environment website at:

[www.dem.ri.gov/urbanforestry](http://www.dem.ri.gov/urbanforestry)

