

**RI DEPARTMENT OF  
ENVIRONMENTAL  
MANAGEMENT**

**DIVISION OF MARINE FISHERIES**

---

**PRE-HEARING WORKSHOP**

December 18, 2018



# Marine Fisheries Informational Workshop – Rules of Engagement



- RIDMF staff will provide presentation on each of the proposed regulation amendments
- Discussion will ensue upon completion of each presentation;
- Discussion should focus on:
  - Understanding of the rationale behind each of the proposed amendments;
  - Recommendations of alternatives.
- **IMPORTANT!** The workshop discussion is not an official public record. Please offer your preferred option(s) and comments for the public hearing record during the public hearing.
- Hearing is scheduled for February 11, 2019.

# Workshop Items



- Recreational and commercial Striped Bass



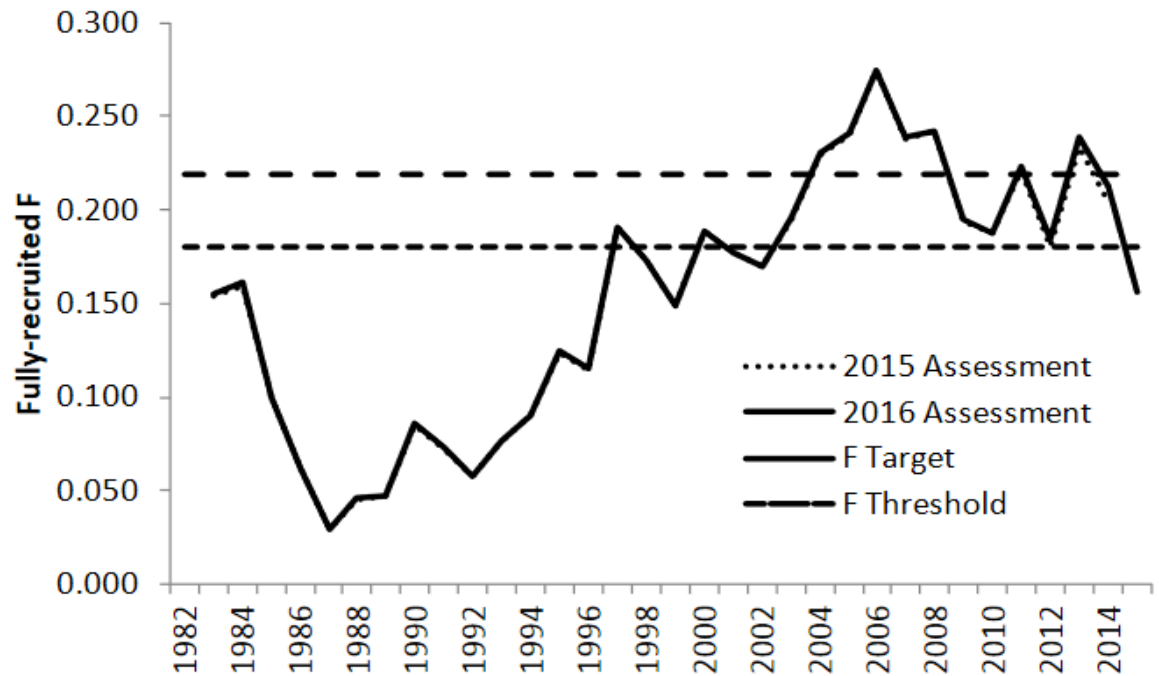
# Striped Bass

- Summary of Stock Status
- 2018 Benchmark Stock Assessment
- 2018 Rhode Island Commercial Fishery Performance
- 2018 Rhode Island Recreational Fishery Performance
- Recommendations/proposals for 2019

# Striped Bass - Stock Status



- Update in 2016: Based on SAW/SARC 57 and peer review, the striped bass stock is not overfished and overfishing is not occurring relative to biological reference points.
- Fishing mortality was estimated to be 0.16 in 2015, a value below both the fishing mortality threshold (0.22) and the fishing mortality target (0.18).

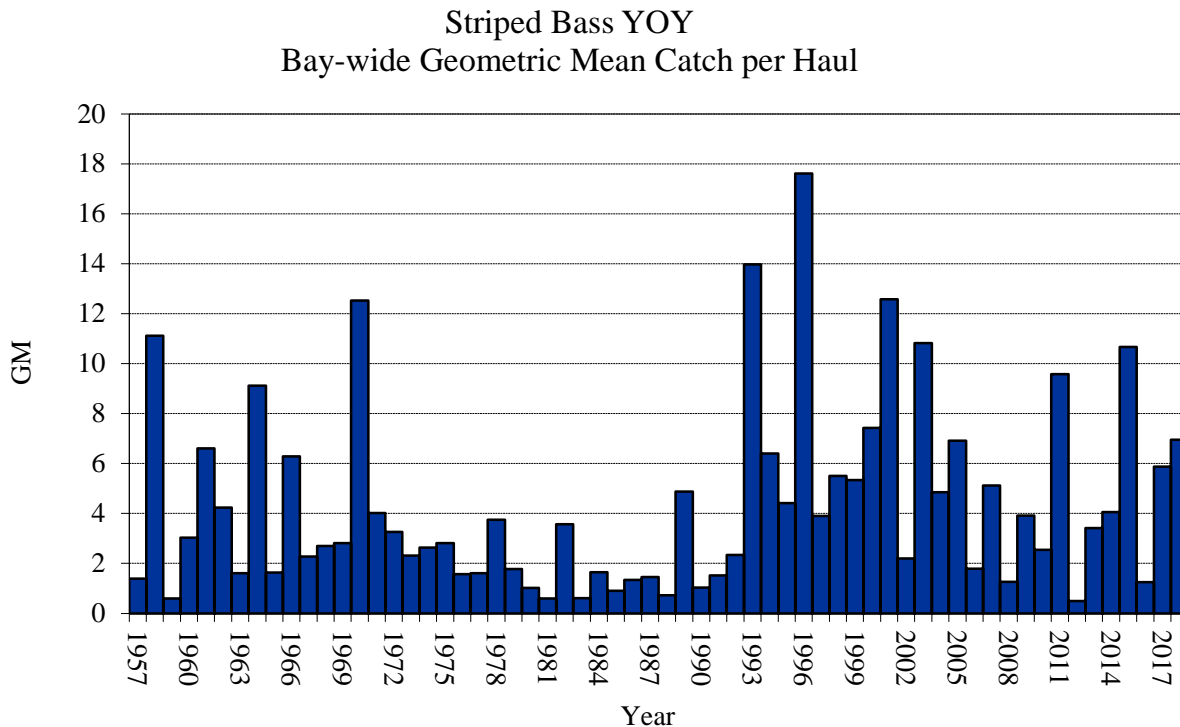


Source: 2016 Update of the Striped Bass Stock Assessment (Figure 14)

# Striped Bass – Stock Status cont.



- SSB was estimated to be 129 million pounds in 2015, just above the threshold but below the target (127 million and 159 million respectively)
- In 2015 high recruitment and a strong year class were observed
- In 2018 the MD YOY survey indicated a slightly higher abundance relative to 2017

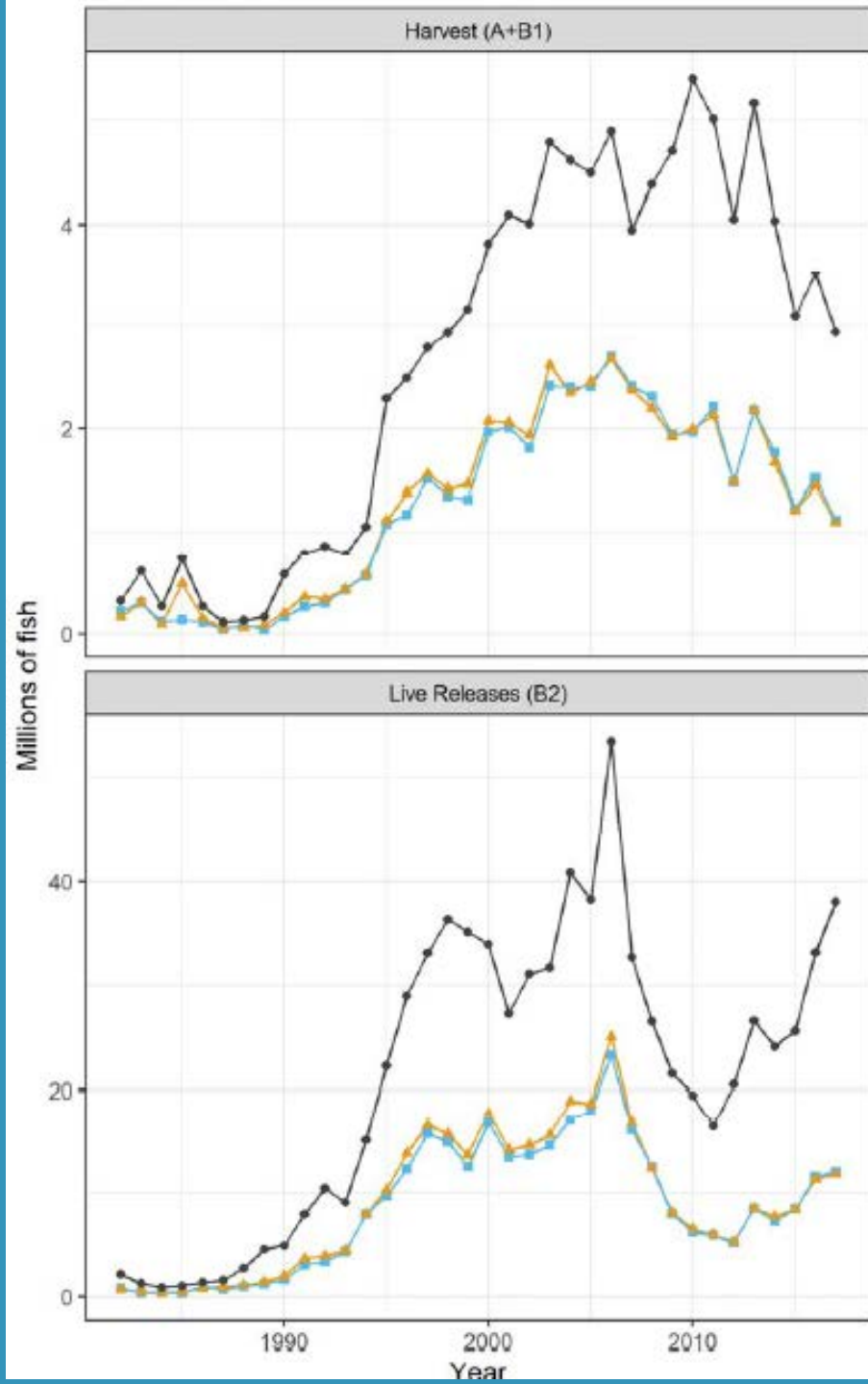


# 2018 Benchmark Stock Assessment



- Peer reviewed In November 2018
- Peer Review and Assessment report are still being drafted, will be available in time for the February Striped Bass Board meeting
- Newly calibrated MRIP estimates:
  - Higher recruitment, biomass, and SSB reference points
  - Same population trend
- Strong year classes in 2011 and 2015 followed by high recruitment
  - 2011 year class – age 6 in 2017 (prop. Mature = 0.46)
  - 2015 year class – age 2 in 2017 (prop. Mature = 0.00)

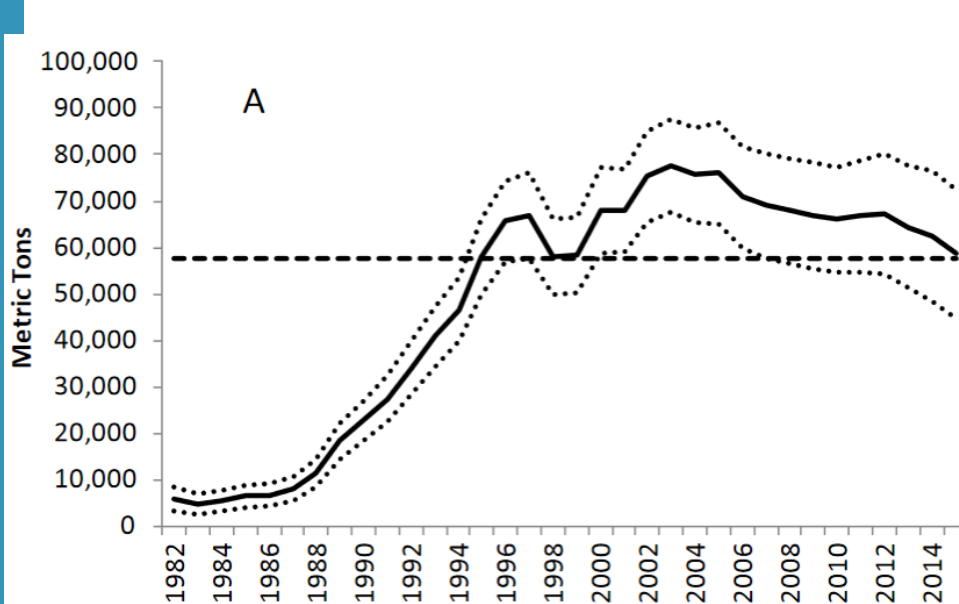
# 2018 Benchmark Stock Assess.



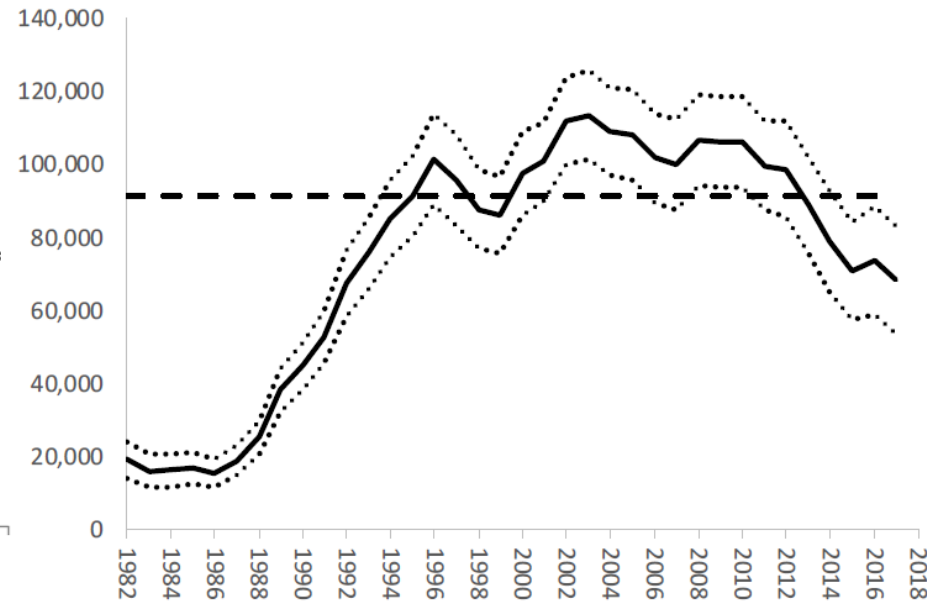
Source: Figure B6.22, 2018  
Benchmark Stock Assessment



# 2018 Benchmark Stock Assess.



Source: ASMFC 2016 Striped Bass Update Assessment, Fig. 12 (A)



Source: 2018 Striped Bass SAW 66 Assessment Report, Figure B7.33 (A)

# 2018 Benchmark Stock Assessment



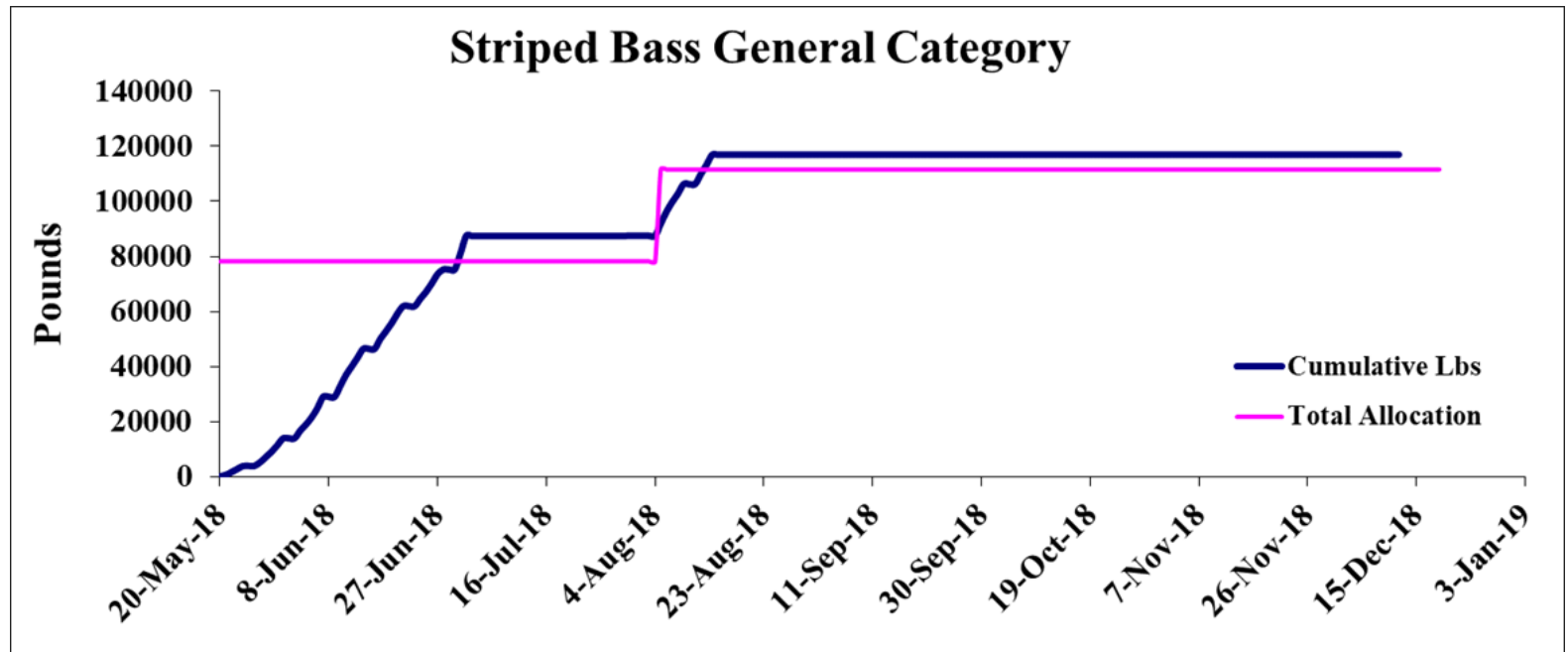
- The Board could:
  - Adopt the single stock SCA model and status quo BRP's
  - Adopt one of the other models put forward in the benchmark and a set of associated BRP's
  - Task the SAS/TC with developing another set of BRP's
  - Initiate the development of an addendum or amendment
    - Adoption of new BRP's and/or satisfying 1 or more management triggers may require Board action
- Unlikely that management would change for 2019

# 2018 RI Commercial Striped Bass General Category Fishery Performance



- Quota: Initial = 111,459 lbs, 5,314 lb harvest overage in 2018

Season	Days Open	Initial Allocation	Trap Rollover/ Period Adjustment	Final Allocation	Landings
5/20 – 8/4	32	78,021 lbs	N/A	78,021 lbs	87,388 lbs
8/5 – 12/31	9	33,438 lbs	-9,367	24,071 lbs	29,385 lbs



# Commercial General Category Striped Bass - 2019 Proposed Management Options



- RI 2019 Commercial Quota: 181,572 lbs
  - General Category: 111,459 lbs
  - Floating Fish Trap: 70,113 lbs

Option	Min. Size	Season	Allocation	Possession Limit
<b><u>Option 1:</u></b> <b><u>Status</u></b> <b><u>quo</u></b>	34"	5/20 – 8/4 (closed Fri & Sat)	70%	5 fish/person/day (max 5 fish/vessel)
		8/5 – 12/31 (closed Fri & Sat)	30%	5 fish/person/day (max 5 fish/vessel)

# 2018 RI Commercial Fishery Performance - Floating Fish Trap



- 2018 Quota: Initial = 70,113 lbs
- Quota was not exceeded but landings graph is confidential and cannot be displayed

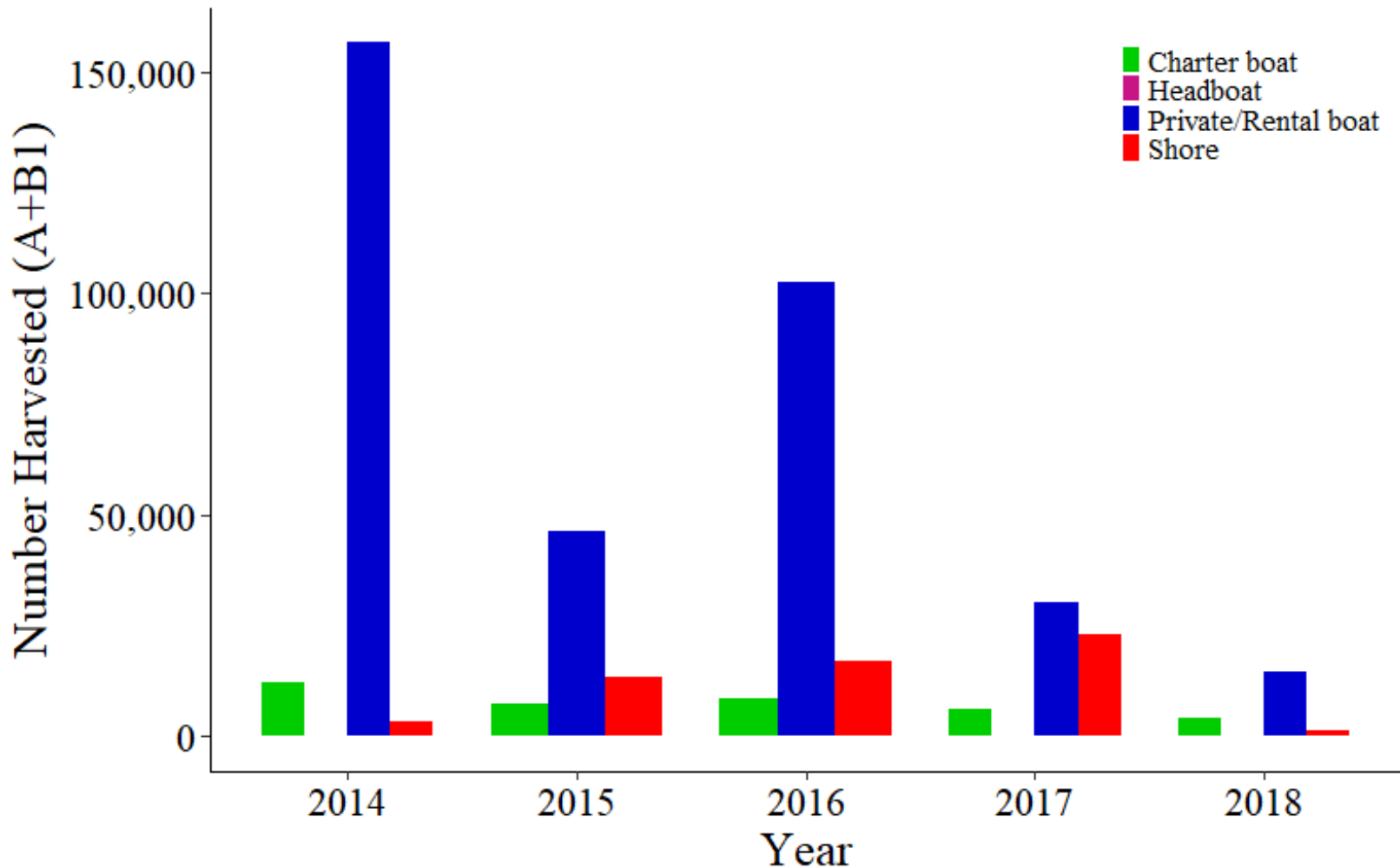
# Commercial Floating Fish Trap Striped Bass - 2019 Proposed Management Options



- RI 2018 Commercial Quota = 181,572 lbs:
  - General Category: 111,459 lbs
  - Floating Fish Trap: 70,113 lbs

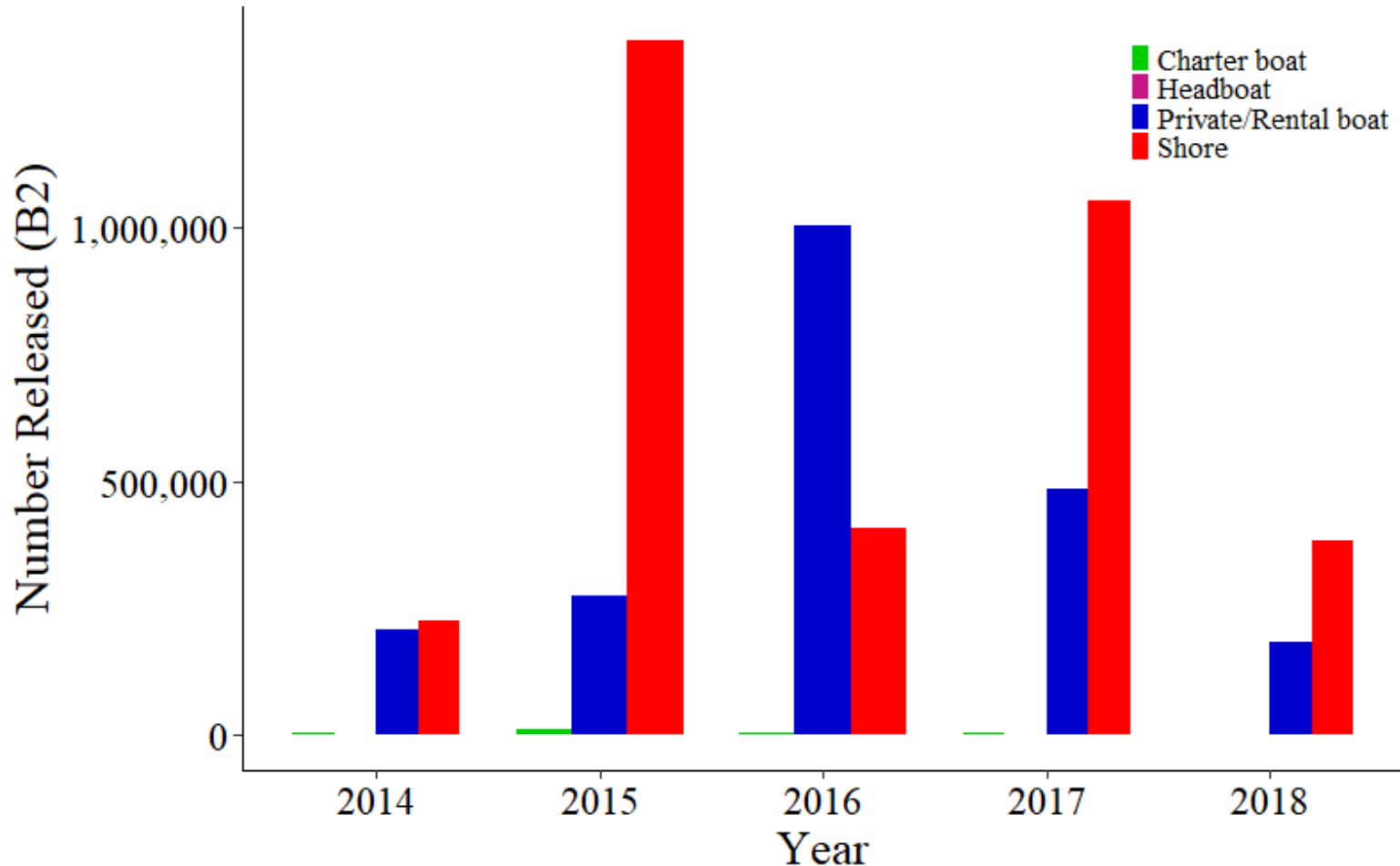
Option	Min. Size	Possession Limit	Season
<b><u>Option 1:</u> Status Quo</b>	26"	Unlimited	4/1 – 12/31

# RI Recreational Striped Bass Fishery Performance



Source: 2018 MRIP, 2018 data preliminary and only through wave 4

# RI Recreational Striped Bass Fishery Performance cont'd:



Source: 2018 MRIP, 2018 data preliminary and only through wave 4



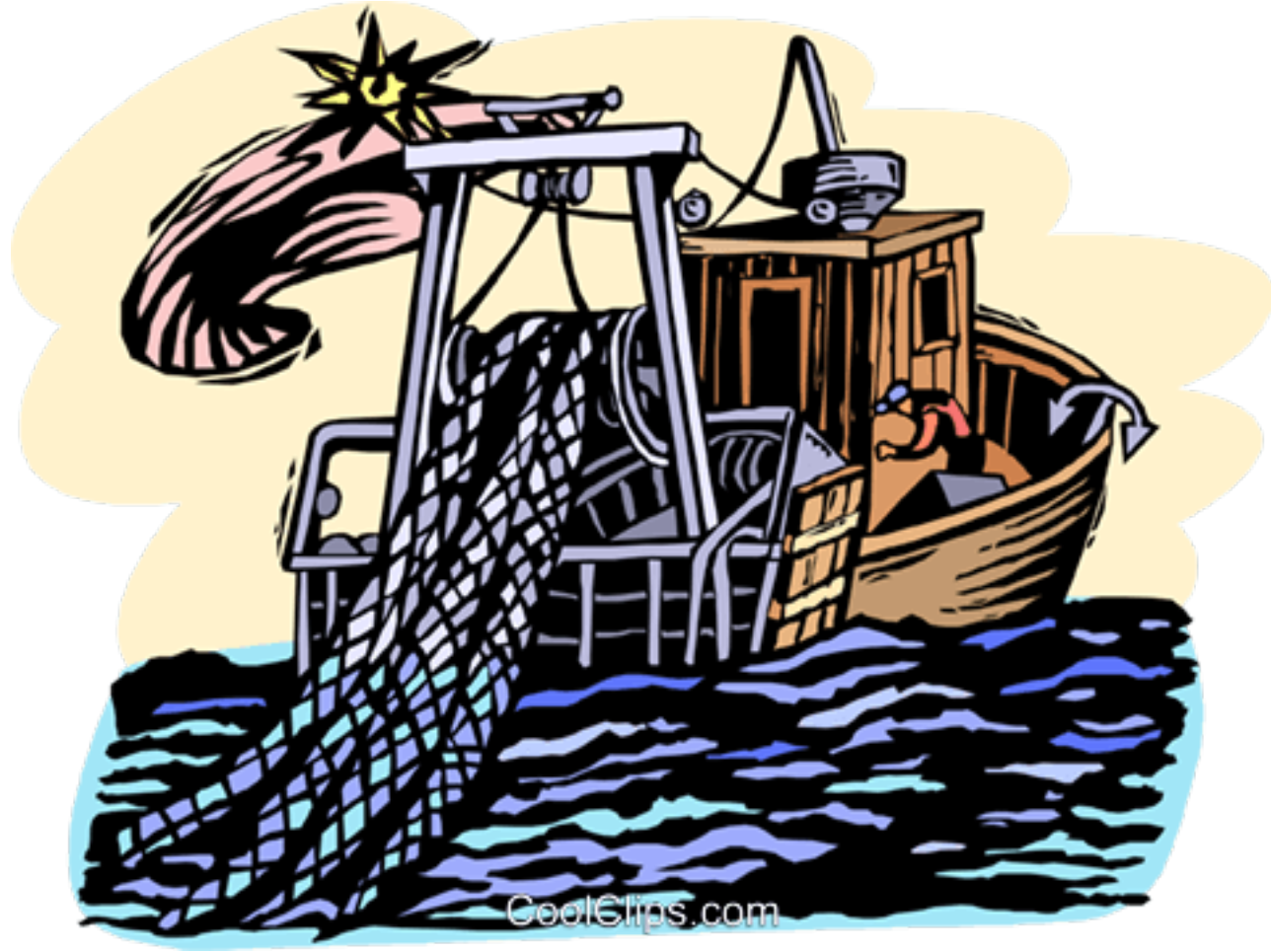
# Recreational Striped Bass - 2019 Proposed Management Options



- No amendments proposed for 2019

<b>Current Management</b>	<b>Min. Size</b>	<b>Possession Limit</b>	<b>Season</b>
	28"	1 fish/person/day	Open year round

# End of Slides!



CoolClips.com