

RI Marine Fisheries Council
Summary of Meeting Minutes of the
Groundfish/Federally Managed Species Advisory Panel Meeting
November 29, 2010 – 6:00 PM
URI/GSO Narragansett Bay Campus, Coastal Institute Building, Hazard Room

There were 8 people present (* Groundfish AP members)

Kenneth Ketcham, Chair

Ted Platz *

Greg Duckworth

Patrick Duckworth

Terence Mulvey

Jason Jarvis

John Gadzik* (RICRRA)

Gerald Carvalho (RIFA)

Eric Schneider, RIDEM

Mark Gibson, RIDEM

Groundfish Members Absent: Douglas Kissick, Paul Westcott, Luke Wheeler, Richard Fuka, Al Conti, Michael Marchetti, John Troiano III, Frank Blount, Jr., Jim White, Carl Granquist, Stephen A. Arnold, Stephen Parente (gillnetter), William Mackintosh, and William Bento.

Handouts: Agenda, Current RI Commercial Monkfish and Codfish regulations

K. Ketcham (Chair) called the meeting to order at approximately 6:10 PM. He noted that only one member (Ted Platz) was in attendance and there was not a quorum. Therefore the meeting was informational only.

MEETING AGENDA ITEMS DISCUSSED:

1. Review of current monkfish stock status

E. Schneider presented the latest stock assessment (SARC 50). T. Mulvey and G. Carvalho each asked questions that were addressed by E. Schneider and M. Gibson.

2. Review of RI commercial monkfish fishery (background, regulations, landings)

E. Schneider gave a presentation that reviewed the RI Monkfish commercial regulations, including changes since the 2007 inception, and summarized state and federal landings in RI from 2007 - present. Landings data by federal management area were also presented. The following items were either stated or discussed during the presentation.

- Discussion of purpose and need for state quota
 - G. Carvalho asked why RI needed a state quota.
 - E. Schneider explained that the Amendment 5 to the Monkfish FMP contains an ACL that accounts for landings for both state and federal waters. Amendment 5 used state water landings for FY2008 as it's proxy for state water landings for FY2011-2013 ACLs.
 - M. Gibson explained that a state quota is needed to meet DFW's statutory obligation to compliment federal fishery management plans.
 - T. Platz stated that the Southern Monkfish Management Area has reached or exceeded the TAC since 2004, so all the fish accounted for in the ACL are being harvested.
- Discussion regarding landings data
 - Although the group appreciated the data as presented, they would like to see state and federal landings going as far back as possible.
 - E. Schneider said that he could request more data form NMFS, but he was not sure how far they could go back and account for state water landings.

*Minute from RIMFC Groundfish AP meeting
11/29/2010*

- G. Carvalho asked how many RI boats had a federal limited access monkfish permit that had not been activated in FY2010.
- E. Schneider explained that accounting for permit status of all vessels is a labor intensive task for staff. He did not know off hand how many boats had not activated their Federal Monkfish permit, but was confident that there were RI boats in that situation. He could check, but ultimately wouldn't know for sure until May 1, 2011.
- Discussion regarding management of the RI Monkfish fishery (quota, possession limit, etc.)
 - G. Duckworth explained that he felt that the 1% did not reflect historical state landings and that quota should be based on history.
 - T. Platz explained that RI should have a state waters fishery, but it's incumbent upon the state to ensure that it's providing for state-water vessels that are fishing in state waters.
 - Presently, the situation where a Federal-permitted vessel can fish in state waters and have landings count against the state quota until it activates it's federal permit is not consistent with a state-waters only fishery.
 - G. Carvalho agreed and said that a proposed change to the regulation should address that afore mentioned situation.
 - E. Schneider and M. Gibson both addressed the group and encouraged them to construct and submit written proposals prior to the Public Hearing.
 - E. Schneider said that he would email the group with the date of the public hearing and provide a deadline for when proposals must be submitted to F&W to be considered in the Public Hearing materials.
 - T. Platz explained that increasing the quota and possession limits above those available to Federally-permitted vessels could create incentive for vessels to drop their federal permits and join the state-water fishery.

3. Division of Fish and Wildlife proposed changes for 2011 commercial monkfish fishing year

- E. Schneider stated that
 - The RI Division of Fish and Wildlife proposes to revise current regulations to include "monkfish livers" as a portion of monkfish that can be landed. This is the only proposed change by the Division at this time.
 - The Division welcomes propels regarding changes to the commercial monkfish regulation.
- G. Duckworth stated that he would like to see the following regulations addressed:
 - Number of vertical lines
 - Soak time restrictions for gill nets
- E. Schneider suggested that ideas be submitted as a written proposal prior to the Public Hearing (see notes above under Agenda Item 2).

4. Advisory Panel proposals for 2011 commercial monkfish fishing year

- No proposals were submitted during the meeting.

5. Review of current codfish stock status

- E. Schneider reviewed the current codfish stock status.

6. Review of RI codfish commercial fishery (background, regulations, landings)

- E. Schneider reviewed the RI codfish commercial fishery regulations and state- and federal-water landings.
 - He noted that in 2009 RI did not come close to the state quota.

- G. Carvalho noted that although not often, at times cod can come inshore in large numbers and a you can catch thousands of pounds in a tow. The 1,000 possession limit results in high discards and lost opportunity.
 - Given that RI did not approach it's quota, perhaps the possession limit should be increased or eliminated.
- T. Mulvey suggested that an aggregate program could be appropriate.
- E. Schneider suggested that ideas be submitted as a written proposal prior to the Public Hearing.

7. Division of Fish and Wildlife proposed changes for 2011 commercial codfish fishing year

- E. Schneider stated that the Division has no proposed changes at this time; however, as with monkfish he said that the Division would consider proposals that were submitted.

8. Advisory Panel proposals for 2011 commercial codfish fishing year

- One proposal was submitted at the end of the meeting by John Gadzik with 3 signatures.
 - The proposal stated, "Close Cox's Ledge to all fishing, except lobstering."
- Since the proposal regards management actions in federal waters, E. Schneider said that he would pass it along to the appropriate channels.

9. Other business Groundfish

- There was no other business and the Chair adjourned the meeting.

RI Groundfish/Federally Managed Species Advisory Panel Meeting

Summary of Rhode Island Monkfish and Codfish Stock
Status, RI Monkfish and Codfish commercial fishery
(background, regulations, landings), and Division of
Fish and Wildlife Recommendations for 2011

November 29, 2010 at 6:00 PM
URI Narragansett Bay Campus
Hazard Room at the Coastal Institute
South Ferry Road, Narragansett, RI

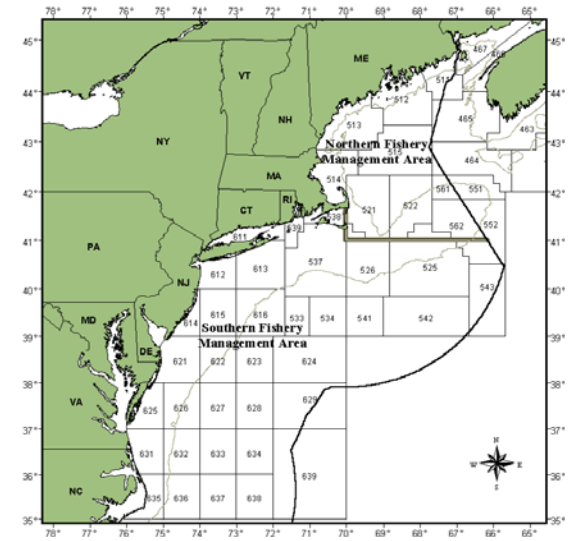
Eric Schneider - RI DEM Marine Fisheries
401.423-1933
Eric.schneider@dem.ri.gov



Review of current monkfish stock status

Updated Stock Status

- ◆ A stock assessment was completed in July 2010 (SARC 50) after the Councils had made their final decisions on the measures to Amendment 5.
 - ◆ No changes to Southern Area ACL for FY2011-13
- ◆ The 2010 assessment updated the biological reference points based on an updated yield-per-recruit analysis using a Statistical Catch At Length-tuned (SCALE) population model that incorporates multiple survey indices and catch data.
- ◆ Based on accepted reference points from the updated assessment:
Monkfish in both the northern and southern management areas are not overfished and overfishing is not occurring.
- ◆ The SARC 50 report emphasizes the continuing high degree of uncertainty in the assessment.
 - ◆ **Discussed later in presentation**



Review of current monkfish stock status

2010 Assessment (SARC 50)

- ♦ Recommended new biomass reference points
- ♦ Recalculated the fishing mortality rate corresponding to the overfishing threshold (F_{max})
- ♦ Previous monkfish biomass targets were based on long-term average biomass and thresholds were based a low point in the biomass time series from which the stock recovered (NEFSC 2007).
- ♦ The current assessment recommends using an approach used for New England groundfish stocks based on the long-term projected biomass corresponding to F_{msy} or its proxy.
 - ♦ For monkfish this proxy is F_{max}



Review of current monkfish stock status

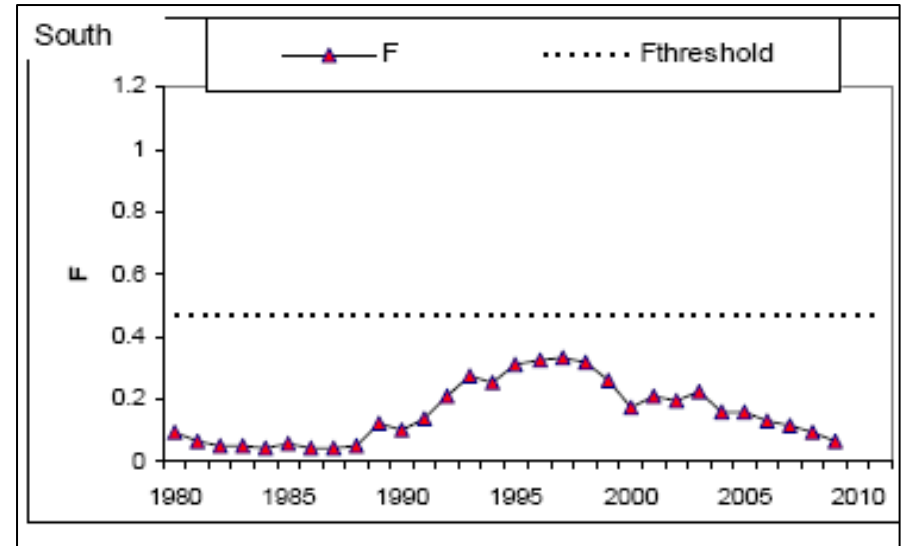
Fishing mortality

The overfishing threshold is based on F_{max}

- same proxy as 2007 assessment

Fishing mortality estimated for 2009 was $F = 0.07$ in the southern area (assuming $M=0.3$ per year)

- Fishing mortality has declined in both areas since 2003



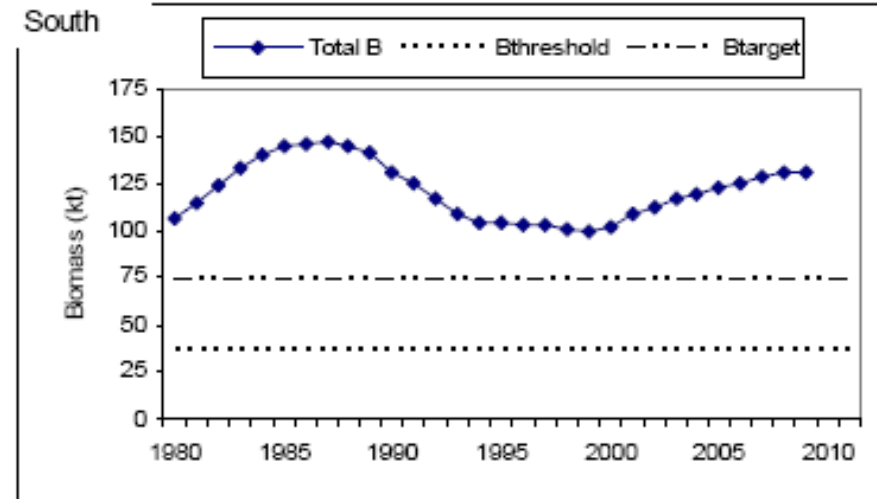
South	BRP	Basis	NEFSC 2007	SAW 2010
→	F_{max}	YPR	0.40	0.46
	Bthreshold	Bloss 1980-2006	96,400	
	Bthreshold	Bloss 1980-2009		99,181
	Bthreshold	0.5*Bmax Projected		37,245
	Btarget	Bavg 1980-2006	122,500	120,292
	Btarget	Bavg 1980-2009		121,313
	Btarget	Bmax Projected		74,490
→	MSY	F_{max} Projected		15,279



Review of current monkfish stock status

Stock Biomass

- ◆ Total southern area stock biomass increased until the late 1980s and then declined throughout the 1990s.
- ◆ Biomass has increased in the southern area since 1999, and was estimated to be:
 - ◆ **131,218 mt in 2009.**



South	BRP	Basis	NEFSC 2007	SAW 2010
	Fmax	YPR	0.40	0.46
	Bthreshold	Bloss 1980-2006	96,400	99,181
	Bthreshold	Bloss 1980-2009		121,313
	→ Bthreshold	0.5*Bmax Projected		37,245
	Btarget	Bavg 1980-2006	122,500	120,292
	Btarget	Bavg 1980-2009		121,313
	→ Btarget	Bmax Projected		74,490
	MSY	Fmax Projected		15,279

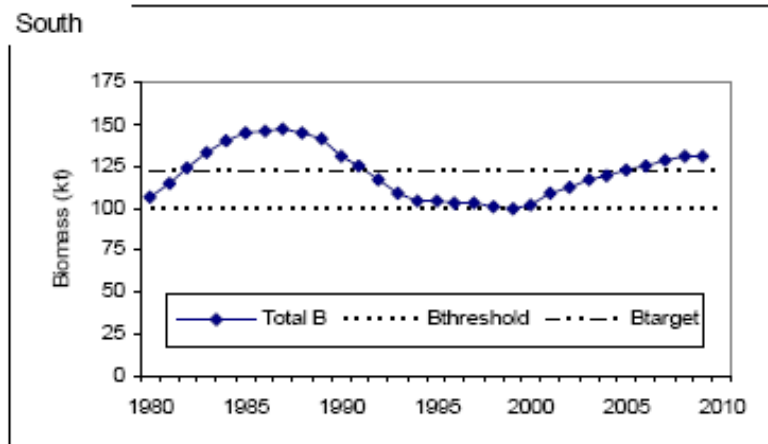


Review of current monkfish stock status

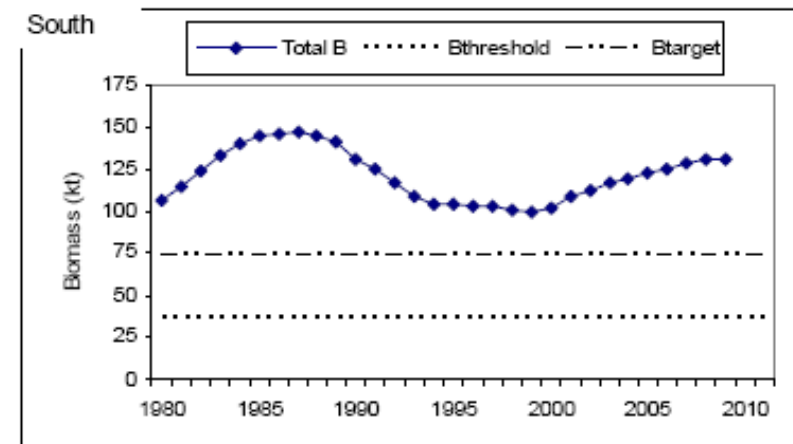
Stock Biomass

Difference in B-thresholds and B-target between assessments.

2007 Biomass Estimates



2010 Biomass Estimates UPDATED



Review of current monkfish stock status

Recruitment

- ♦ Southern area results indicate that the strongest year classes were produced in 1992, 1997, and 2002, with the weakest year class produced in 1987.
- ♦ Recruitment has been below average since 2004.
- ♦ The time series average recruitment is about 23 million age 1 fish.

Reauthorizing of Magnusson requires that variance and precession (uncertainty) of both input and output variables be recognized and quantified

- ♦ Uncertainty within estimates due to:
 - ♦ cumulative effects of under-reported landing
 - ♦ unknown discards during the 1980s
 - ♦ uncertainty in survey indices
 - ♦ incomplete understanding of key biological parameters such as age and growth, longevity, natural mortality, and stock structure contributing to retrospective patterns primarily in the northern management area



Review of RI commercial monkfish fishery (background, regulations, landings)

Background of RI Commercial monkfish fishery regulations (1 of 3)

- ◆ Prior to Jan 1, 2007 there were no RI commercial monkfish regulations
- ◆ Effective Jan 1, 2007 - The following were established:
 - ◆ Minimum size: 17" total length or 11" tails
 - ◆ Possession limits for any non-federally permitted RI Licensed vessel
 - ◆ 50 tails or 166 whole
 - ◆ Transiting provision for federally permitted vessels
- ◆ Effective April 2, 2008 - The following were modified or added:
 - ◆ Created 2 seasons and 1 corresponding possession limits for any non-federally permitted RI Licensed vessel
 - ◆ Aug 1 – March 31: 50 tails or 166 whole
 - ◆ April 1 – July 31: 200 tails or 664 whole
 - ◆ Possession limits may be modified on the basis of a RI state water monkfish quota as set by DEM. *(no quota est.)
 - ◆ Transiting provision modified to clarify that DAS must be in previously and properly declared



Review of RI commercial monkfish fishery (background, regulations, landings)

Background of RI Commercial monkfish fishery regulations (2 of 3)

- ◆ Effective April 23, 2009 - The following were modified or added:
 - ◆ Repealed seasons and set possession limit equal to federal
 - ◆ 550 tails or 1826 whole
 - ◆ Established RI state water monkfish quota "... equal to 1% of the federal southern New England monkfish quota."
 - ◆ Established trigger to reduce possession limit to 50 tails or 166 whole when 90% of quota is reached

So, the present regs read: - next slide



Review of RI commercial monkfish fishery (background, regulations, landings)

Background of RI Commercial monkfish fishery regulations (3 of 3)

Current RI regulations (see handout)

7.21 Monkfish

7.21.1 – Commercial

7.21.1-1 Minimum size -- No person fishing commercially shall land or possess any monkfish measuring less than seventeen inches (17") total length or eleven inches (11") tail length whether that fish was caught within the jurisdiction of this State or otherwise.

7.21.1-2 Possession Limits –

(a) For any non-federally permitted RI licensed vessel, the possession limit will be 550 pounds tail weight or 1,826 pounds whole weight of monkfish per vessel per calendar day.

(b) Repealed

(c) The possession limit may be modified on the basis of a RI state water monkfish quota as set by DEM, which shall be equal to 1% of the federal southern New England monkfish quota. When 90% of the state water quota has been harvested as determined by the Division of Fish and Wildlife, the possession limit will decrease to 50 pounds tail weight or 166 pounds whole weight of monkfish per vessel per calendar day. When the state water quota has been harvested as determined by the Division, the Director shall close the state water monkfish fishery.

7.21.1-3 Vessels in possession of a federal permit allowing the harvest of monkfish may harvest monkfish in state waters if and only if they are operating during a previously and properly declared day-at-sea; in such instances, such vessels may harvest monkfish in the amount authorized to be possessed pursuant to federal regulations, and thus not be bound by the possession limits set forth in section 7.21.1-2. Vessels in possession of a federal permit allowing the commercial harvest of monkfish may also transit state waters in possession of monkfish in the amount authorized to be possessed pursuant to applicable federal regulations and land the same if so permitted pursuant to Rhode Island State Law, so long as all of the fish harvesting gear on board the vessel is stowed while in state waters.



Review of RI commercial monkfish fishery (background, regulations, landings)

What is 1% of SNE monkfish quota (Southern Management Area TAL)?

FY 2010 = 112,436 lbs

FY 2011 = 196,763 lbs

Year	ACL (mt)	ACT (mt)	Discards (mt)	TAL		1% of TAL	source
	Southern Mang Area	Southern Mang Area		(mt)	(lbs)	(lbs)	
FY 2007	na	na	-	5,100	11,243,574	112,436	Ammendment 4
FY 2008	na	na	-	5,100	11,243,574	112,436	Ammendment 4
FY 2009	na	na	-	5,100	11,243,574	112,436	Ammendment 4
FY 2010	na	na	-	5,100	11,243,574	112,436	Ammendment 4
FY 2011	13,326	11,469	2,544	8,925	19,676,257	196,763	Ammendment 5
FY 2012	13,326	11,469	2,544	8,925	19,676,257	196,763	Ammendment 5
FY 2013	13,326	11,469	2,544	8,925	19,676,257	196,763	Ammendment 5

The buffer between ACL and ACT should account for management uncertainty, avoid exceeding the ACL and avoid reactive accountability measures.



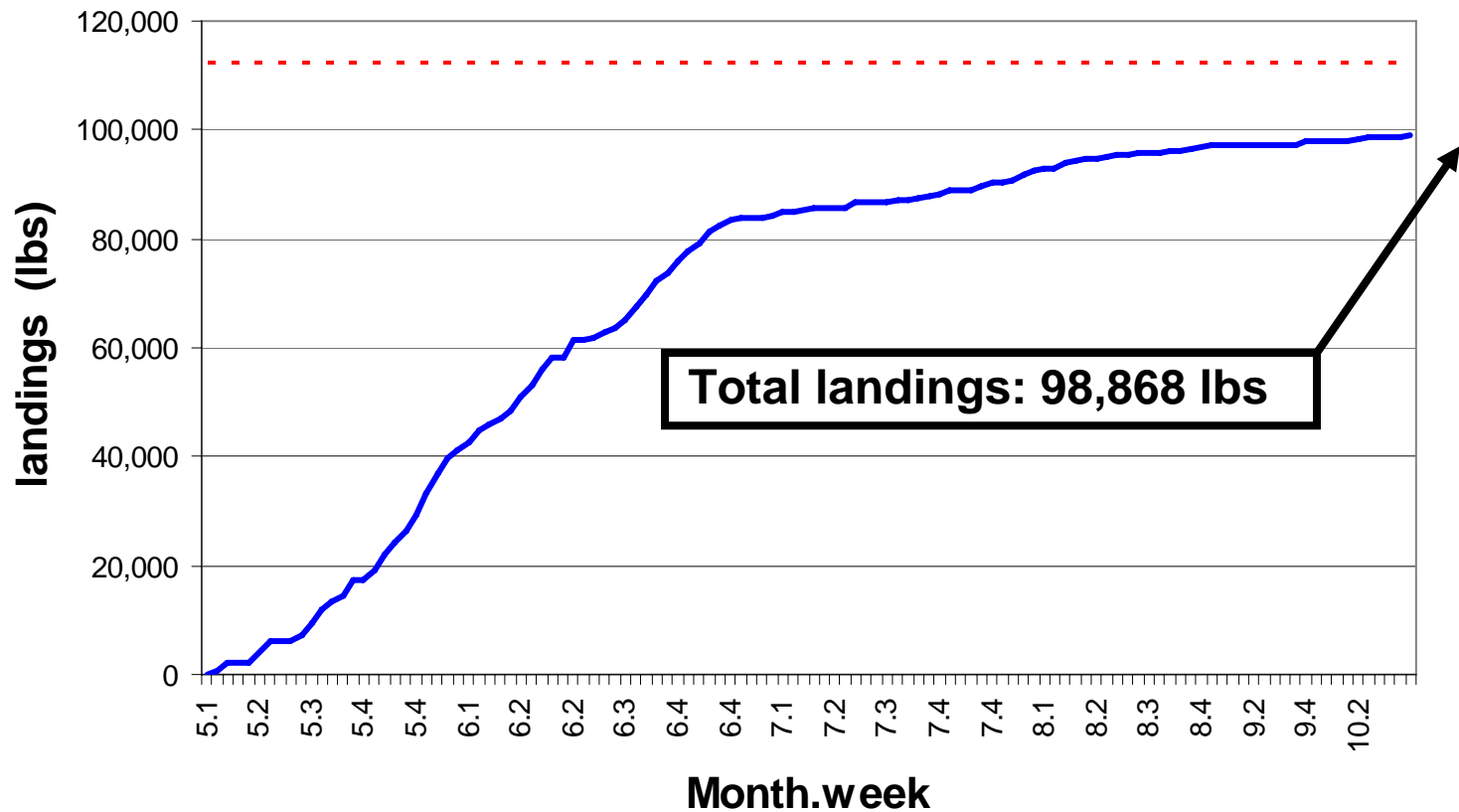
Southern Management Area TAL accounts for landings by:

- ♦ Federal Monkfish Limited Access Permit holders
- ♦ Federal open access incidental catch permit (Category E)
- ♦ State water only vessels
- ♦ RSA

Review of RI commercial monkfish fishery (background, regulations, landings)

RI Monkfish Commercial Landings for May1 – Oct 18, 2010 by vessels with no active federal permits at time of landing.

Monkfish State-water Landings May1- Oct 18, 2010



Review of RI commercial monkfish fishery (background, regulations, landings)

RI Commercial Landings for 2010

Table 1. Monkfish landings (lbs) reported by dealers in Rhode Island for fishing years 2007 - 2010

Fishing YEAR	Federal Permit Holders		Non-Federal Permit Holders			Total RI monkfish	Total Federally permitted vessels	Total Non- Federally permitted
	Open access Federally permitted	Limited access Federally permitted	Other (assumed state landings)	Other unknown landings**	Non-renewed monkfish permits***			
2007	87,978	3,311,303	59,462	39,542	1,423	3,499,708	3,399,281	100,427
2008	60,641	2,965,604	97,162	22,600	8,829	3,154,836	3,026,245	128,591
2009	37,469	2,375,410	72,500	22,786	3,833	2,511,998	2,412,879	99,119
2010*	11,588	1,358,112	98,244	8,569	3,420	1,479,933	1,369,700	110,233

Source: best available data from the CFDBS.CFDERSXXXX dealer database queried on 11/29/10

*May 1, 2010 through November 29, 2010

**For the specified fishing year the vessel permit number did not have an associated monkfish plan

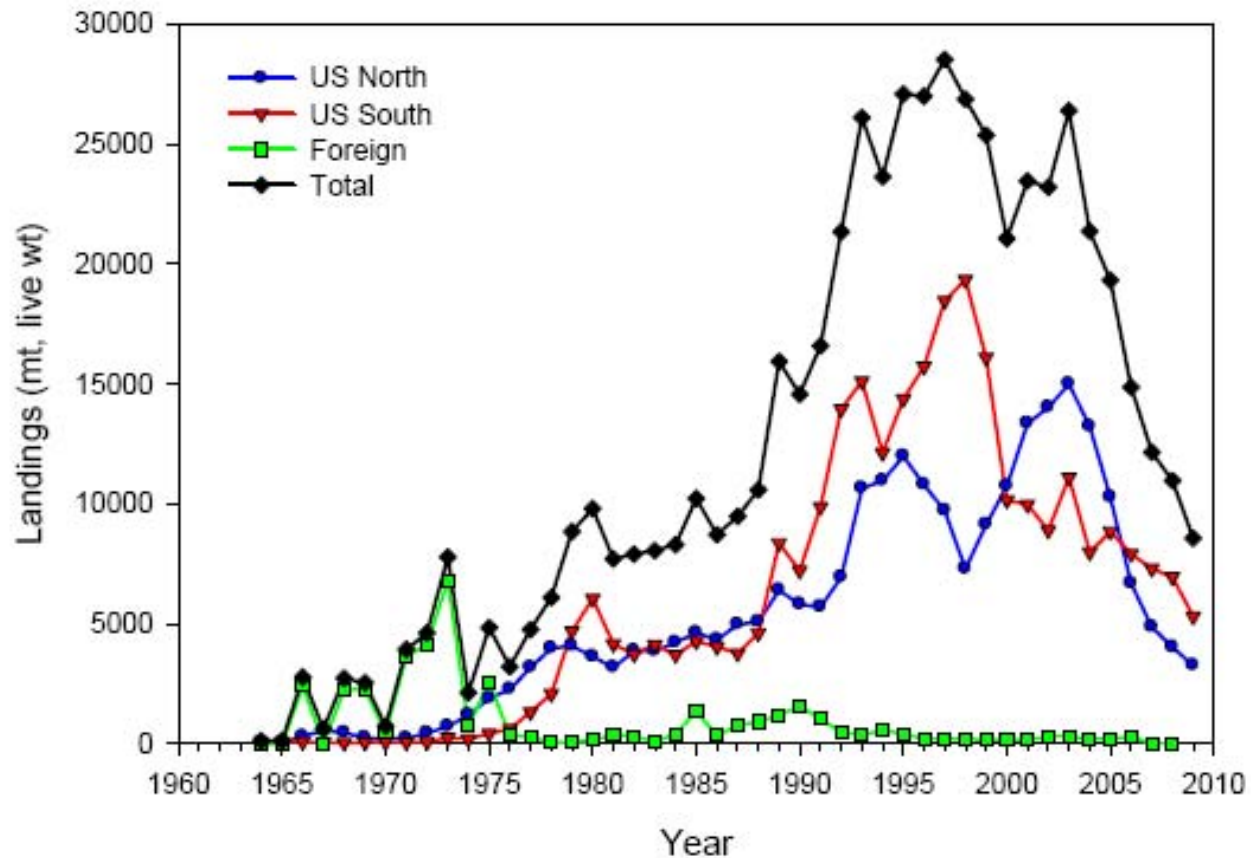
***Vessels with monkfish permits that were active and not active during part of the same year landings occurred when the permit was not active during that year



Fishing YEAR	Total RI monkfish	Total Federally permitted vessels	Total Non- Federally permitted	Percent of TAL by Total Non- Federally permitted
2007	3,499,708	97%	3%	0.9%
2008	3,154,836	96%	4%	1.1%
2009	2,511,998	96%	4%	0.9%
2010*	1,479,933	93%	7%	1.0%

Review of RI commercial monkfish fishery (background, regulations, landings)

Monkfish Commercial Landings- overall

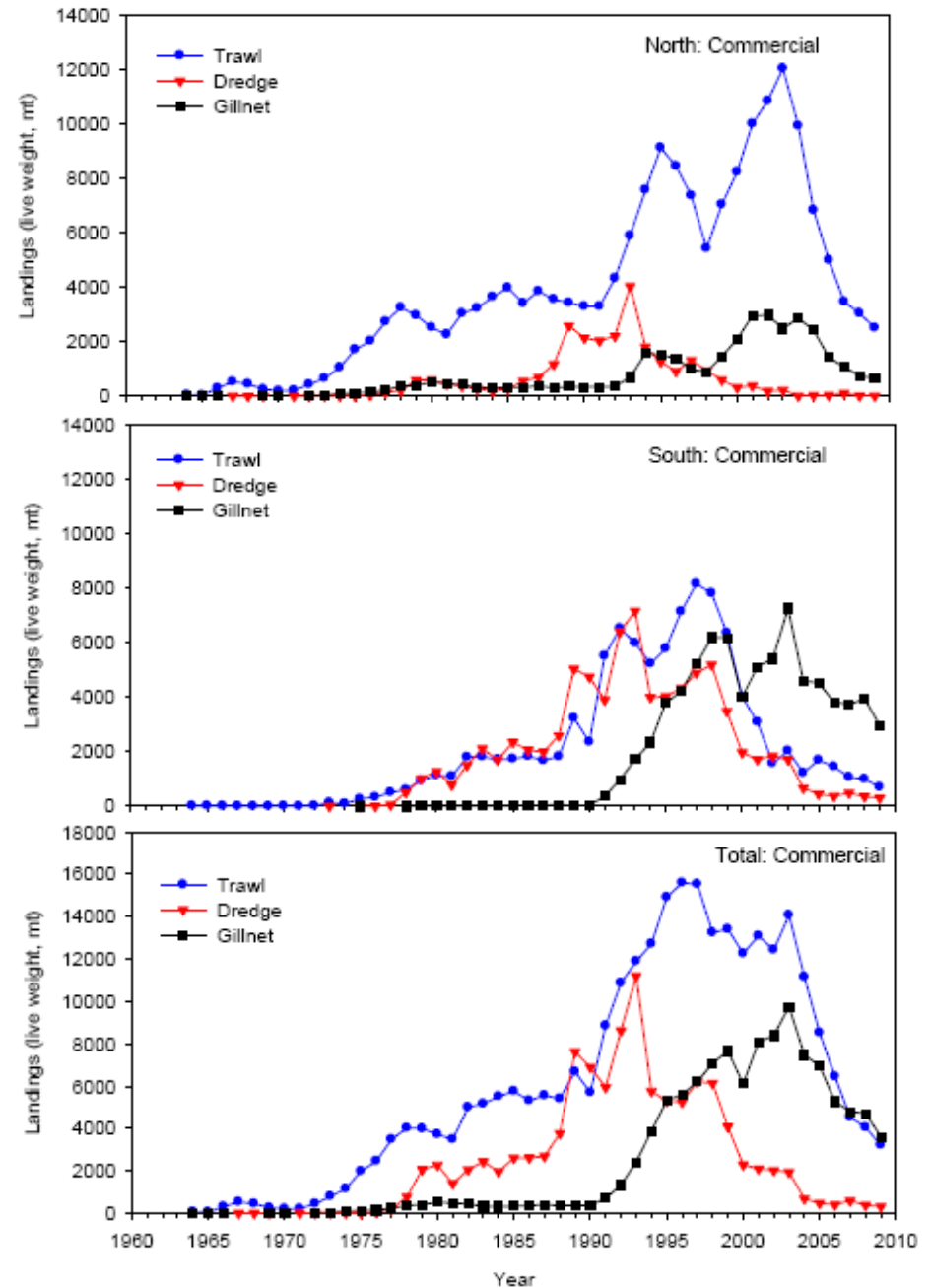


A5. Monkfish commercial fishery landings, by management region and total, 1964-2009.



Review of RI commercial monkfish fishery (background, regulations, landings)

Monkfish Commercial Landings by gear and area



Division of Fish and Wildlife Proposed Changes

The RI Division of Fish and Wildlife will propose to revise current regulations to include “monkfish livers” as a portion of monkfish that can be landed.

Advisory Panel proposals for 2011 commercial monkfish fishing year



End of monkfish portion of meeting



Review of current George's Bank Cod Stock Status

Stock Status

- ♦ GB Atlantic cod is a transboundary stock that is harvested by both the U.S. and Canadian fishing fleets.

The GB Atlantic cod stock is overfished and overfishing is occurring.

- ♦ The latest assessment was the GARM III (2008), which used the ADAPT VPA model and included US and Canadian landings and discards, and US Rec landings in CAA.

Results

$$F_{msy} = F_{40\%} = 0.25$$

$$F_{2007} = 0.3$$

$$F_{target} = 0.186$$

Fishing mortality (unweighted, ages 5-8) in 2007 was estimated to be about 0.30, the second lowest F in the time series.

$$SSB_{MSY} = 148,084 \text{ mt}$$

$$SSB_{2007} = 17,682 \text{ (12\% of SSB}_{MSY}\text{)}$$

- ♦ Under an F rebuild the stock is projected to rebuild to $SSB_{MSY} = 148,084 \text{ mt}$ with a 50% probability by 2026.



Review of current George's Bank Cod Stock Status

Results:

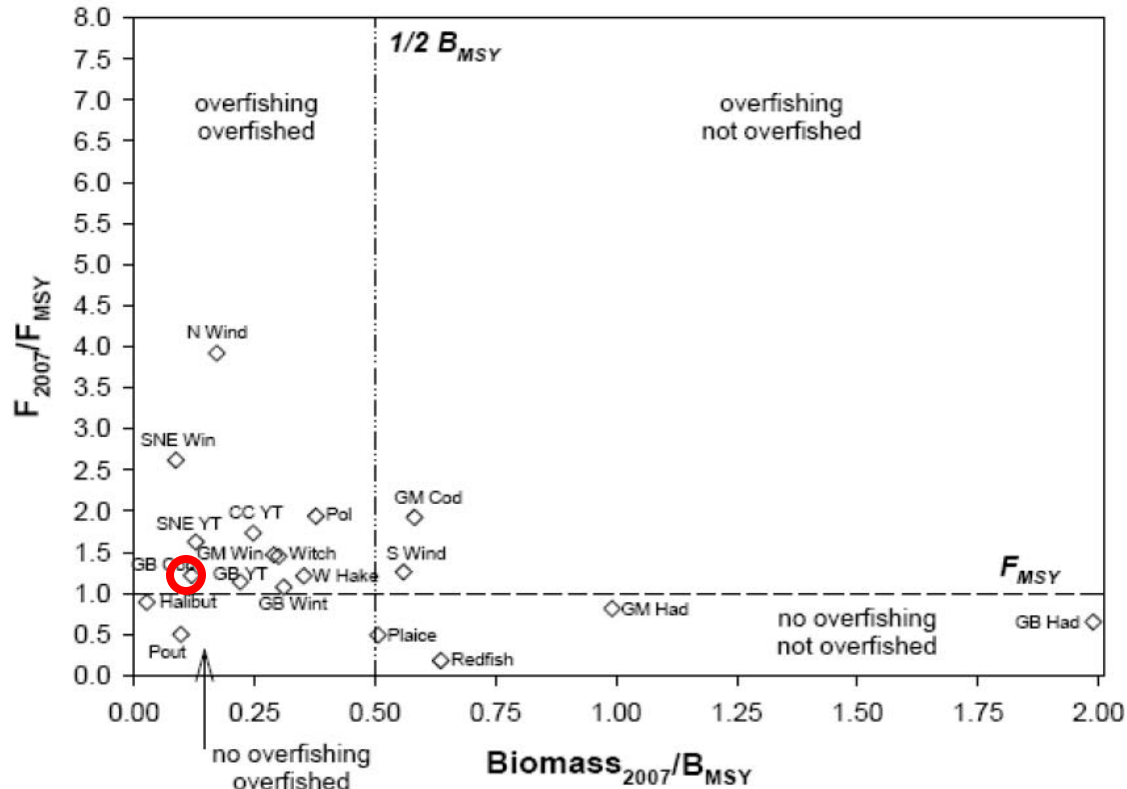
$F_{msy} = F_{40\%} = 0.25$

$F_{2007} = 0.3$

$F_{target} = 0.186$

$SSB_{MSY} = 148,084 \text{ mt}$

$SSB_{2007} = 17,682 \text{ (12\% of SSB}_{MSY}\text{)}$



Review of current George's Bank Cod Stock Status

Recruitment

- The last year class that was above the time series average (14.1 million age 1 fish) occurred almost 2 decades ago in 1990.
- The 2003 year class (10.8 million age 1 fish) is near average and will be fully recruited to the fishery during 2008.



Review of RI codfish commercial fishery (background, regulations, landings)

Current RI Regs (see handout)

7.22 Cod

7.22.1 – Commercial

7.22.1-1 Minimum size -- No person fishing commercially shall land or possess any cod measuring less than twenty-two inches (22”) total length whether caught within the jurisdiction of this State or otherwise.

7.22.1-2 Possession Limits –

- (a) For any non-federally permitted RI licensed vessel, the possession limit will be 1,000 pounds of cod per vessel per calendar day.
 - (b) The possession limit may be modified on the basis of a RI state water cod quota as set by DEM, which shall be equal to 1% of the federal New England (Georges Bank) cod quota. When 90% of the state water quota has been harvested as determined by the Division of Fish and Wildlife, the possession limit will decrease to 75 pounds of cod per vessel per calendar day. When the state water quota has been harvested as determined by the Division, the Director shall close the state water cod fishery.
- 7.22.1-3 Vessels in possession of a federal permit allowing the harvest of cod may harvest cod in state waters if and only if they are operating during a previously and properly declared day-at-sea; in such instances, such vessels may harvest cod in the amount authorized to be possessed pursuant to federal regulations, and thus not be bound by the possession limits set forth in section 7.22.1-2. Vessels in possession of a federal permit allowing the commercial harvest of cod may also transit state waters in possession of cod in the amount authorized to be possessed pursuant to applicable federal regulations and land the same if so permitted pursuant to Rhode Island State Law, so long as all of the fish harvesting gear on board the vessel is stowed while in state waters.



Review of RI codfish commercial fishery (background, regulations, landings)

GB Cod ACL and Sub-ACL for 2010 (Framework 44) and Preliminary 2011-2012 (Framework 45)

		OFL	ABC	Total ACL
2010	lbs	13,829,760	8,379,000	7,982,100
Preliminary - 2011	lbs	16,120,755	10,509,030	10,010,700
Preliminary - 2012	lbs	17,838,450	11,827,620	11,265,345
2010	MT	6,272	3,800	3,620
Preliminary - 2011	MT	7,311	4,766	4,540
Preliminary - 2012	MT	8,090	5,364	5,109

	Groundfish Sub-ACL	Preliminary Sector sub-ACL	Preliminary non-Sector sub-ACL	Preliminary common pool sub-ACL	Sub-component TOTAL	State Waters ACL Subcomponent	Other ACL subcomponent	RI Quota = 1% ACL
2010	7,563,150	7,336,035	na	227,115	418,950	83,790	335,160	79,821
Pre - 2011	9,483,705	9,104,445	379,260	na	526,995	105,840	421,155	100,107
Pre - 2012	10,674,405	10,246,635	427,770	na	593,145	119,070	474,075	112,653
2010	3,430	3,327	na	103	190	38	152	36
Pre - 2011	4,301	4,129	172	na	239	48	191	45
Pre - 2012	4,841	4,647	194	na	269	54	215	51



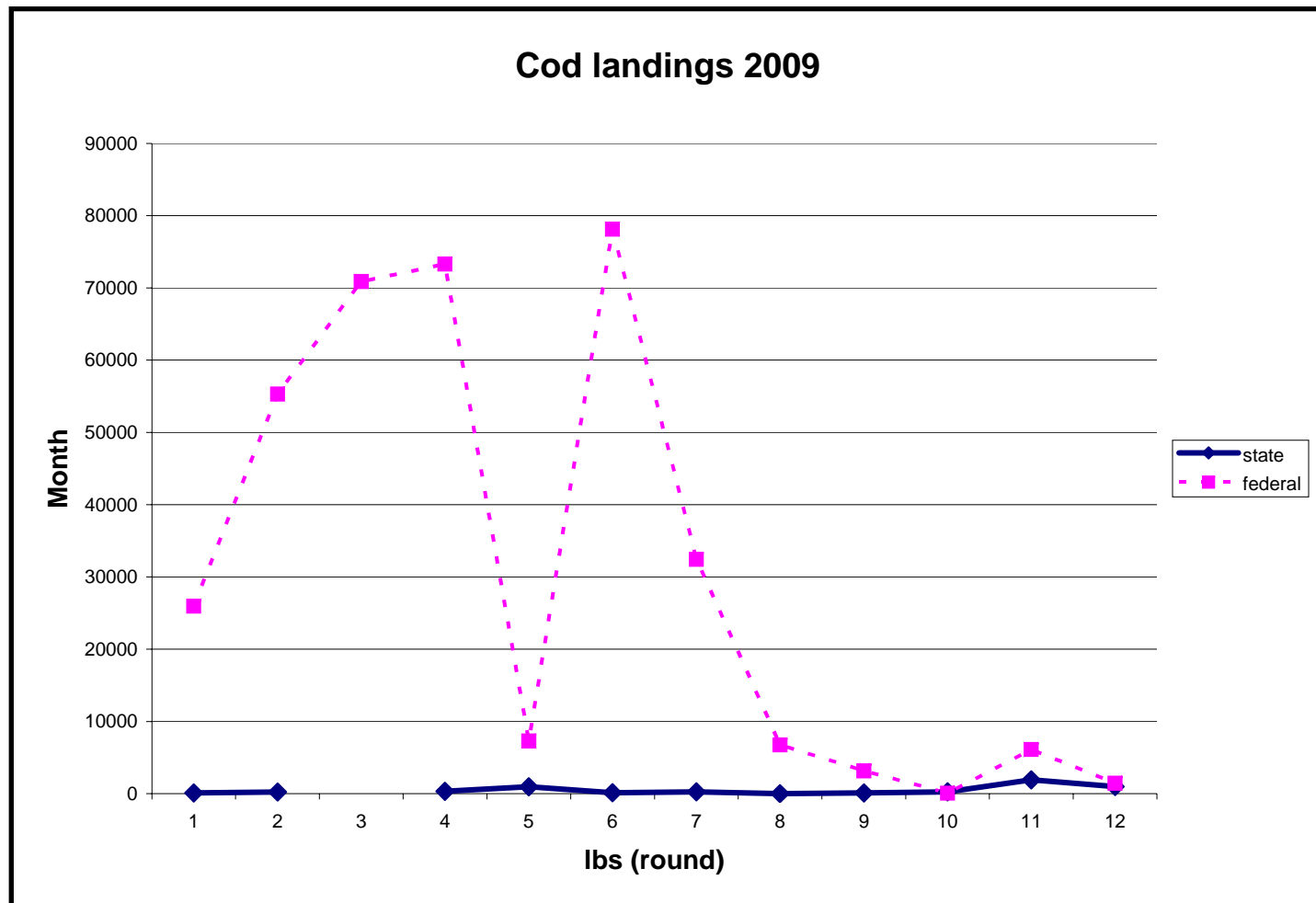
RI Landings for 2009 and 2010

	state only	federal	total
FY - 2009	5,233	360,805	366,038
FY - 2010 *	2,857	37,726	40,582

* as of 11/22/2010

Review of RI codfish commercial fishery (background, regulations, landings)

RI Cod landings by state and federally-permitted vessels during 2009



Division of Fish and Wildlife Proposed Changes

The RI Division of Fish and Wildlife has no proposed changes to present for codfish.

Advisory Panel proposals for 2011 commercial codfish fishing year



Thanks for participating

