



April 30, 2012

Mr. Joseph T. Martella II, Senior Engineer
Rhode Island Department of Environmental Management
Office of Waste Management
Site Remediation Program
235 Promenade Street
Providence, Rhode Island 02908

**RE: Air Monitoring Report
First Quarter, 2012
Retail Complex, Active Sub-Slab Depressurization System
Former Gorham Manufacturing Facility
333 Adelaide Avenue, Providence, Rhode Island
AMEC Project No. 3650080114**

Dear Mr. Martella:

This letter report presents the results of quarterly compliance sampling and analysis conducted by AMEC E&I, Inc. at the retail complex located at the Former Gorham Manufacturing Facility, 333 Adelaide Avenue, Providence, Rhode Island (the Site). The reporting period is from January 2012 through March 2012 and includes one quarterly compliance sampling event (March 8, 2012).

The sampling and analysis and this reporting were conducted consistent with the Short Term Response Action Order of Approval dated July 24, 2008 and the Addendum to the Order of Approval dated August 7, 2008 (collectively referred to as the Orders of Approval).

Background

The active sub-slab depressurization (ASD) system, also called a vapor mitigation system, in the large retail space consists of four extraction wells connected to a 3 hp Rotron regenerative blower. The blower is located in an enclosure located at the north, or rear, of the large retail space.

The small retail spaces consist of the eastern, central, and western retail spaces (Figure 1). The mitigation systems in the small retail spaces consist of one extraction well in each space connected to an individual radon-type fan, located at the north, or rear, of each small retail space.

Small Retail Spaces

The quarterly monitoring event for the three small retail spaces, consistent with the requirements of the Orders of Approval, was completed on March 8, 2012.

Table 1 summarizes the analytical results at the small retail spaces for the baseline sampling event conducted prior to system start-up and all subsequent sampling events conducted after system start-up. Results of the indoor air samples were compared to the Draft Connecticut Industrial/Commercial Indoor Target Air Concentrations (TAC), which were identified as action levels in the Orders of Approval. The laboratory report (12C0234) associated with the March 8, 2012 quarterly sampling event is provided in Appendix A of this letter report. The analytical laboratory's detection limits are provided in Appendix B.

The sampling event included an indoor air sample from each of the small retail spaces (locations IA-5, IA-6, and IA-7), one outdoor air reference sample (location AA-1), and one air sample collected from each of the three vapor extraction wells (EW-5, EW-6, and EW-7). The sampling locations are shown in Figure 1. The outdoor reference air sample (AA-1) was located at an upwind location during the sampling round. Sub-slab vacuum monitoring (pressure differential measurements) was also conducted at locations VMW-5, VMW-6, and VMW-7 in conjunction with the quarterly air sampling program. The vacuum monitoring results are tabulated in Table 2.

The following conclusions are based on Site observations and the data from Table 1.

- Indoor air sample results are in compliance with action levels for the quarterly sampling event in the three small retail spaces (sample locations IA-5, IA-6, and IA-7).
- The eastern small retail space (sample location IA-5) remains unoccupied.
- The center small retail space (sample location IA-6) remains unoccupied.
- The western small retail space (sample location IA-7) is intermittently occupied.
- The mitigation systems are functioning as designed.

Large Retail Space

The quarterly monitoring event for the large retail space, consistent with the requirements of the Orders of Approval, was completed on March 8, 2012. Table 3 summarizes the analytical results for the large retail space for the baseline sampling event conducted prior to system start-up and all subsequent sampling events conducted after system start-up. Results of the indoor air samples were compared to the Draft Connecticut Industrial/Commercial Indoor Target Air Concentrations (TAC), which were identified as action levels in the Orders of Approval. The laboratory report (12C0234) associated with the March 8, 2012 quarterly sampling event is provided in Appendix A of this letter report. The analytical laboratory's detection limits are provided in Appendix B.

The sampling event included collection of samples from each of the indoor air sampling points in the large retail space (locations IA-1 through IA-4), one outdoor air reference sample (location AA-1), and one air sample collected from the manifold where air from the four vapor extraction wells is collected (EW-Combined). The sampling locations are shown in Figure 1. The outdoor reference air sample (AA-1) was located at an upwind location. Sub-slab vacuum monitoring (pressure differential measurements) was also conducted at locations VMW-1 through VMW-4 in conjunction with the air sampling program. The vacuum monitoring results for the large retail space are tabulated in Table 4.

The following conclusions are based on Site observations and the data from Table 3.

- Indoor air sample results were in compliance with action levels for the March 2012 quarterly sampling event in the large retail space (sample locations IA-1 through IA-4).
- The mitigation system is functioning as designed and is achieving desired results with respect to indoor air quality in the large retail space.

ASD System Monitoring


The ASD system performance is monitored monthly by Clean Harbors Environmental Services. There were two system shutdowns during the reporting period. The first shutdown occurred on March 9, 2012 for approximately one hour. The second shutdown was on March 28, 2012 for approximately three hours.

Next Reporting Period

The next quarterly report (second quarter 2012) will include monitoring from April 2012 through June 2012. The report will be prepared and submitted to the Rhode Island Department of Environmental Management (RIDEM) in July 2012.

Please contact the undersigned at 781-245-6606 if we can provide additional information or answer any questions concerning these monitoring events and system adjustments.

Sincerely,
AMEC E&I, Inc.


for Mark Maggioro
Environmental Scientist *with permission*


Michael Murphy
Principal Scientist

Textron, Inc.
Former Gorham Manufacturing Facility, Providence, RI
Retail Complex, Active Sub-Slab Depressurization System
Air Monitoring Report, First Quarter, 2012

Enclosures: Table 1. Summary of Analytical Results – Air Sampling for Small Retail Spaces
Table 2. Vacuum Monitoring Results – Small Retail Spaces
Table 3. Summary of Analytical Results – Air Sampling for Large Retail Space
Table 4. Vacuum Monitoring Results – Large Retail Space

Figure 1 Vapor Mitigation Sample Locations

Appendix A – Laboratory Reports

Appendix B – Analytical Laboratory Detection Limits

cc: Stuart MacDonald, City of Providence
G. Simpson, Textron, Inc. (Electronic)
Knight Memorial Library Repository
G. Wilson, Kimco Realty Corporation (including tenants)
J. Morgan, The Stop & Shop Supermarket Co., LLC
AMEC Project File

[P:\old_Wakefield_Data\projects\3650080114 - Textron Gorham Vapor Mitigation System\4.0 Project Deliverables\4.1 Reports\2012\Qrt1_2012]

Textron, Inc.
Former Gorham Manufacturing Facility, Providence, RI
Retail Complex, Active Sub-Slab Depressurization System
Air Monitoring Report, First Quarter, 2012

TABLES

Table 2.
Vacuum Monitoring Results - Small Retail Spaces
Former Gorham Manufacturing Site
Providence, Rhode Island

Date	Pressure Differential (inches of water)		
	VMW-5	VMW-6	VMW-7
2/3/2009	-0.25	-0.17	0.00
2/18/2009	-0.212	-0.155	-0.011
2/26/2009	-0.230	-0.120	-0.025
3/6/2009	-0.200	-0.086	-0.012
4/14/2009	-0.108	-0.054	-0.014
5/15/2009	-0.081	-0.073	-0.016
6/11/2009	-0.090	-0.076	-0.098
9/17/2009	-0.110	-0.102	+0.074
12/29/2009**	-0.011	-0.010	-0.061
3/26/2010	-0.245	-0.142	-0.018
7/1/2010	-0.542	-0.114	-0.176
9/16/2010	-0.247	-0.874	-0.013
12/7/2010	-0.044	-0.028	+0.022
2/17/2011	-0.212	-0.599	-0.337
6/2/2011	-0.277	-0.236	-0.138**
9/15/2011	-0.234	-0.212	-0.010
12/8/2011	-0.609	-0.115	-0.009
3/8/2012	-0.003	-0.246	-0.114

** ASD system offline.

Prepared by/Date: MAM 04/05/12

Checked by/Date: EYM 04/20/12

**Table 3.
Summary of Analytical Results - Air Sampling for Large Retail Space
Former Gorham Manufacturing Site
Providence, Rhode Island**

Parameter (ug/m ³)	Outdoor Air Reference Locations														
	AA-1 011609 1/16/2009	AA-1- 020309 2/3/2009	AA-1- 021109 2/11/2009	AA-1- 021809 2/18/2009	AA-1- 022609 2/26/2009	AA-1- 030609 3/6/2009	AA-1- 033109 3/31/2009	AA-1- 041409 4/14/2009	AA-1- 042409 4/24/2009	AA-1- 051509 5/15/2009	AA-1- 061109 6/11/2009	AA-1- 091709 9/17/2009	AA-1- 092409 9/24/2009	AA-1- 100109 10/1/2009	AA-1- 100809 10/8/2009
1,1,1-Trichloroethane	0.27 U	0.27 U	0.27 U	0.27 U	0.27 U	0.27 U	0.27 U	0.19 U	0.27 U	0.27 U	0.27 U	0.27 U	0.27 U	0.27 U	0.27 U
1,1,2,2-Tetrachloroethane	0.34 U	0.34 U	0.34 U	0.34 U	0.34 U	0.34 U	0.34 U	0.24 U	0.34 U	0.34 U	0.34 U	0.34 U	0.34 U	0.34 U	0.34 U
1,1,2-Trichloroethane	0.27 U	0.27 U	0.27 U	0.27 U	0.27 U	0.27 U	0.27 U	0.19 U	0.27 U	0.27 U	0.27 U	0.27 U	0.27 U	0.27 U	0.27 U
1,1-Dichloroethane	0.2 U	0.2 U	0.2 U	0.2 U	0.2 U	0.2 U	0.2 U	0.14 U	0.2 U	0.2 U	0.2 U	0.2 U	0.2 U	0.2 U	0.2 U
1,1-Dichloroethene	0.2 U	0.2 U	0.2 U	0.2 U	0.2 U	0.2 U	0.2 U	0.14 U	0.2 U	0.2 U	0.2 U	0.2 U	0.2 U	0.2 U	0.2 U
1,2,4-Trichlorobenzene	0.37 U	0.37 U	0.37 U	0.37 U	0.37 U	0.37 U	0.37 U	0.26 U	0.37 U	0.37 U	0.37 U	0.37 U	0.37 U	0.37 U	0.37 U
1,2,4-Trimethylbenzene	0.25 U	0.28	0.52	1.8	0.25 U	0.25 U	0.25 U	0.18 U	0.25 U	0.25 U	0.29	0.3	0.25 U	0.25 U	0.25 U
1,2-Dibromoethane (EDB)	0.38 U	0.38 U	0.38 U	0.38 U	0.38 U	0.38 U	0.38 U	0.27 U	0.38 U	0.38 U	0.38 U	0.38 U	0.38 U	0.38 U	0.38 U
1,2-Dichlorobenzene	0.3 U	0.3 U	0.3 U	0.3 U	0.3 U	0.3 U	0.3 U	0.21 U	0.3 U	0.3 U	0.3 U	0.3 U	0.3 U	0.3 U	0.3 U
1,2-Dichloroethane	0.2 U	0.2 U	0.2 U	0.2 U	0.2 U	0.2 U	0.2 U	0.14 U	0.2 U	0.2 U	0.2 U	0.2 U	0.2 U	0.2 U	0.2 U
1,2-Dichloropropane	0.23 U	0.23 U	0.23 U	0.23 U	0.23 U	0.23 U	0.23 U	0.17 U	0.23 U	0.23 U	0.23 U	0.23 U	0.23 U	0.23 U	0.23 U
1,2-Dichlorotetrafluoroethane	0.35 U	0.35 U	0.35 U	0.35 U	0.35 U	0.35 U	0.35 U	0.25 U	0.35 U	0.35 U	0.35 U	0.35 U	0.35 U	0.35 U	0.35 U
1,3,5-Trimethylbenzene	0.25 U	0.25 U	0.25 U	0.5	0.25 U	0.25 U	0.25 U	0.18 U	0.25 U	0.25 U	0.25 U	0.25 U	0.25 U	0.25 U	0.25 U
1,3-Butadiene	0.11 U	0.11 U	0.17	1.3	0.11 U	0.11 U	0.11 U	0.08 U	0.11 U	0.11 U	0.11 U	0.23 U	0.23 U	0.23 U	0.23 U
1,3-Dichlorobenzene	0.3 U	0.3 U	0.3 U	0.3 U	0.3 U	0.3 U	0.3 U	0.21 U	0.3 U	0.3 U	0.3 U	0.3 U	0.3 U	0.3 U	0.3 U
1,4-Dichlorobenzene	0.3 U	0.3 U	0.3 U	0.53	0.3 U	0.3 U	0.3 U	0.21 U	0.3 U	0.3 U	0.3 U	0.3 U	0.3 U	0.3 U	0.3 U
1,4-Dioxane															
2-Butanone	0.58	1.2	2.4	3.2	1.6	0.67	1.7	0.11 U	1.6	1.6	1.1	1.7	0.8	1.2	1.2
2-Hexanone	0.2 U	0.22	0.57	0.35	0.2 U	0.2 U	0.2 U	0.14 U	0.26	0.39	0.2 U	0.34	0.2 U	0.33	0.23
4-Ethyltoluene	0.25 U	0.25 U	0.25 U	0.6	0.25 U	0.25 U	0.25 U	0.18 U	0.25 U	0.25 U	0.25 U	0.25 U	0.25 U	0.25 U	0.25 U
4-Methyl-2-pentanone	0.2 U	0.2 U	0.27	0.63	0.2 U	0.2 U	0.2 U	0.14 U	0.2 U	0.2 U	0.2 U	0.2 U	0.2 U	0.2 U	0.2 U
Acetone	7.3	8	15	22	8.4	5.9	12	1.1	27	9.5	10	10	9.6	5.4	17
Benzene	0.69	0.62	1.3	4.7	0.43	0.69	0.46	0.12 U	0.3	0.4	0.49	0.38	0.35	0.25	0.2
Benzyl chloride	0.26 U	0.26 U	0.26 U	0.26 U	0.26 U	0.26 U	0.26 U	0.19 U	0.26 U	0.26 U	0.26 U	0.26 U	0.26 U	0.26 U	0.26 U
Bromodichloromethane	0.33 U	0.33 U	0.33 U	0.33 U	0.33 U	0.33 U	0.33 U	0.24 U	0.33 U	0.33 U	0.33 U	0.33 U	0.33 U	0.33 U	0.33 U
Bromoform	0.51 U	0.51 U	0.51 U	0.51 U	0.51 U	0.51 U	0.51 U	0.36 U	0.51 U	0.51 U	0.51 U	0.51 U	0.51 U	0.51 U	0.51 U
Bromomethane	0.19 U	0.19 U	0.19 U	0.19 U	0.19 U	0.19 U	0.19 U	0.14 U	0.19 U	0.19 U	0.19 U	0.19 U	0.19 U	0.19 U	0.19 U
Carbon disulfide	0.16 U	0.16 U	0.16 U	0.16 U	0.16 U	0.16 U	0.16 U	0.12 U	0.16 U	0.16 U	0.16 U	0.16 U	0.16 U	0.16 U	0.16 U
Carbon tetrachloride	0.38	0.44	0.52	0.56	0.43	0.61	0.47	0.22 U	0.41	0.78	0.43	0.4	0.4	0.43	0.46
Chlorobenzene	0.23 U	0.23 U	0.23 U	0.23 U	0.23 U	0.23 U	0.23 U	0.17 U	0.23 U	0.23 U	0.23 U	0.23 U	0.23 U	0.23 U	0.23 U
Chloroethane	0.13 U	0.13 U	0.13 U	0.13 U	0.13 U	0.13 U	0.13 U	0.1 U	0.13 U	0.13 U	0.13 U	0.13 U	0.13 U	0.13 U	0.13 U
Chloroform	0.24 U	0.24 U	0.24 U	0.24 U	0.24 U	0.24 U	0.24 U	0.17 U	0.24 U	0.24 U	0.24 U	0.24 U	0.24 U	0.24 U	0.24 U
Chloromethane	1.1	0.9	1.4	1.5	1.1	1.1	1.3	1.1	1.2	1.1	1.2	0.85	1.1	0.97	0.96
cis-1,2-Dichloroethene	0.2 U	0.2 U	0.2 U	0.2 U	0.2 U	0.2 U	0.2 U	0.14 U	0.2 U	0.2 U	0.2 U	0.2 U	0.2 U	0.2 U	0.2 U
cis-1,3-Dichloropropene	0.22 U	0.22 U	0.22 U	0.22 U	0.22 U	0.22 U	0.22 U	0.16 U	0.22 U	0.22 U	0.22 U	0.22 U	0.22 U	0.22 U	0.22 U
Cyclohexane	0.17 U	0.17 U	0.35	1.1	0.17 U	0.17 U	0.17 U	0.12 U	0.17 U	0.17 U	0.17 U	0.17 U	0.17 U	0.17 U	0.17 U
Dibromochloromethane	0.43 U	0.43 U	0.43 U	0.43 U	0.43 U	0.43 U	0.43 U	0.31 U	0.43 U	0.43 U	0.43 U	0.43 U	0.43 U	0.43 U	0.43 U
Dichlorodifluoromethane	2	2.2	2.6	2.7	2.6	2.6	2.8	2	2.5	2.7	2.6	2.1	2.1	2.2	2.1
Ethanol	4	5.4	10	47	4.3	3.5	4.7	0.81	4.9	4.8	8.6	6.6	4.6	3.9	4.9
Ethyl acetate	0.37 U	0.37 U	0.18 U	0.31	0.37 U	0.18 U	0.18 U	0.26 U	0.37 U	0.18 U	0.18 U	0.18 U	0.18 U	0.18 U	0.18 U

**Table 3.
Summary of Analytical Results - Air Sampling for Large Retail Space
Former Gorham Manufacturing Site
Providence, Rhode Island**

Parameter (ug/m ³)	Outdoor Air Reference Locations														
	AA-1 011609 1/16/2009	AA-1- 020309 2/3/2009	AA-1- 021109 2/11/2009	AA-1- 021809 2/18/2009	AA-1- 022609 2/26/2009	AA-1- 030609 3/6/2009	AA-1- 033109 3/31/2009	AA-1- 041409 4/14/2009	AA-1- 042409 4/24/2009	AA-1- 051509 5/15/2009	AA-1- 061109 6/11/2009	AA-1- 091709 9/17/2009	AA-1- 092409 9/24/2009	AA-1- 100109 10/1/2009	AA-1- 100809 10/8/2009
Ethylbenzene	0.22 U	0.25	0.52	2	0.22 U	0.22 U	0.22 U	0.16 U	0.22 U	0.22 U	0.24	0.22 U	0.23	0.22 U	0.22 U
Hexachlorobutadiene	1.1 U	1.1 U	1.1 U	1.1 U	1.1 U	1.1 U	1.1 U	0.75 U	1.1 U	1.1 U	1.1 U	0.53 U	0.53 U	0.53 U	0.53 U
Hexane	1.5	0.75	1.1	2.9	0.38	2.8	2.2	0.13 U	0.56	0.37	0.59	0.48	1.4	0.45	4.5
Isopropyl alcohol	1.4	1.4	1.8	4.3	1.4	0.67	1.4	0.18 U	14	1	2.5	2.8	0.87	0.63	0.25 U
m,p-Xylene	0.43 U	0.72	1.4	6.4	0.44	0.43 U	0.43 U	0.31 U	0.43 U	0.49	0.73	0.62	0.59	0.43 U	0.43 U
Methyl methacrylate															
Methylene chloride	5.5	3.1	0.65	1.5	0.78	7.4	15	2.1	2.8	1.7	1.9	0.7 U	4.2	0.7 U	23
Methyl-t-butyl ether	0.18 U	0.18 U	0.18 U	0.18 U	0.18 U	0.18 U	0.18 U	0.13 U	0.18 U	0.18 U	0.18 U	0.18 U	0.18 U	0.18 U	0.18 U
n-Heptane	0.2 U	0.27	0.92	1.6	0.2 U	0.2 U	0.2 U	0.14 U	0.2 U	0.4	0.23	0.2 U	0.2 U	0.2 U	0.2 U
o-Xylene	0.22 U	0.27	0.53	2.2	0.22 U	0.22 U	0.22 U	0.16 U	0.22 U	0.24	0.27	0.23	0.22 U	0.22 U	0.22 U
Propylene (Propene)	0.18 U	0.18 U	0.09 U	0.09 U	0.18 U	0.09 U	0.09 U	0.13 U	0.18 U	0.09 U	0.09 U	0.35 U	0.35 U	0.18 U	0.35 U
Styrene	0.21 U	0.21 U	0.21 U	0.28	0.21 U	0.21 U	0.21 U	0.15 U	0.21 U	0.21 U	0.21 U	0.21 U	0.21 U	0.21 U	0.21 U
Tetrachloroethene	0.34 U	0.34 U	0.73	0.77	0.34 U	0.34 U	0.34 U	0.24 U	0.34 U	0.34 U	0.34 U	0.52	0.34 U	0.34 U	0.34 U
Tetrahydrofuran	0.15 U	0.15 U	0.15 U	0.15 U	0.15 U	0.15 U	0.15 U	0.11 U	0.15 U	0.15 U	0.15 U	0.15 U	0.15 U	1.2	0.15 U
Toluene	0.94	1.5	3.2	14	0.71	0.99	0.82	0.14 U	0.72	2.6	2.1	1.9	2	0.61	0.5
trans-1,2-Dichloroethene	0.2 U	0.2 U	0.2 U	0.2 U	0.2 U	0.2 U	0.2 U	0.14 U	0.2 U	0.2 U	0.2 U	0.2 U	0.2 U	0.2 U	0.2 U
trans-1,3-Dichloropropene	0.22 U	0.22 U	0.22 U	0.22 U	0.22 U	0.22 U	0.22 U	0.16 U	0.22 U	0.22 U	0.22 U	0.22 U	0.22 U	0.22 U	0.22 U
Trichloroethene	0.27 U	0.27 U	0.27 U	0.39	0.27 U	0.27 U	0.27 U	0.19 U	0.27 U	0.27 U	0.27 U	0.27 U	0.27 U	0.27 U	0.27 U
Trichlorofluoromethane	1.3	1.2	1.7	2.4	1.5	2	1.7	0.92	1.3	1.5	2	1.1	1.4	1.2	1.5
Trichlorotrifluoroethane	0.68	0.53	0.5	0.47	0.64	0.48	0.51	0.27 U	0.64	0.67	0.56	0.47	0.49	0.45	0.46
Vinyl acetate	0.71 U	0.71 U	0.18 U	0.18 U	0.71 U	0.18 U	0.18 U	0.5 U	0.71 U	0.18 U	0.18 U	0.71 U	0.71 U	0.71 U	0.71 U
Vinyl chloride	0.13 U	0.13 U	0.13 U	0.13 U	0.13 U	0.13 U	0.13 U	0.1 U	0.13 U	0.13 U	0.13 U	0.13 U	0.13 U	0.13 U	0.13 U

**Table 3.
Summary of Analytical Results - Air Sampling for Large Retail Space
Former Gorham Manufacturing Site
Providence, Rhode Island**

Parameter (ug/m ³)	Outdoor Air Reference Locations																
	AA-1-122909 12/29/2009	AA-1-012810 1/28/2010	AA-1-020510 2/5/2010	AA-1-021210 2/12/2010	AA-1-021910 2/19/2010	AA-1-032610 3/26/2010	AA-1-043010 4/30/2010	AA-1-052810 5/28/2010	AA-1-070110 7/1/2010	AA-1-091610 9/16/2010	AA-1-120710 12/7/2010	AA-1-021711 2/17/2011	AA-1-060211 6/6/2011	AA-1-091511 9/15/2011	AA-1-120811 12/8/2011	AA-1-030812 3/8/2012	
1,1,1-Trichloroethane	0.27 U	0.27 U	0.27 U	0.27 U	0.27 U	0.27 U	0.27 U	0.27 U	0.27 U	0.27 U	0.27 U	0.27 U	0.27 U	0.27 U	0.27 U	0.29	0.082 U
1,1,2,2-Tetrachloroethane	0.34 U	0.34 U	0.34 U	0.34 U	0.34 U	0.34 U	0.34 U	0.34 U	0.34 U	0.34 U	0.34 U	0.34 U	0.34 U	0.34 U	0.34 U	0.21 U	0.1 U
1,1,2-Trichloroethane	0.27 U	0.27 U	0.27 U	0.27 U	0.27 U	0.27 U	0.27 U	0.27 U	0.27 U	0.27 U	0.27 U	0.27 U	0.27 U	0.27 U	0.27 U	0.16 U	0.082 U
1,1-Dichloroethane	0.2 U	0.2 U	0.2 U	0.2 U	0.2 U	0.2 U	0.2 U	0.2 U	0.2 U	0.2 U	0.2 U	0.2 U	0.2 U	0.2 U	0.20 U	0.063	0.061 U
1,1-Dichloroethene	0.2 U	0.2 U	0.2 U	0.2 U	0.2 U	0.2 U	0.2 U	0.2 U	0.2 U	0.2 U	0.2 U	0.2 U	0.2 U	0.2 U	0.20 U	0.12 U	0.059 U
1,2,4-Trichlorobenzene	0.75 U	0.37 U	0.37 U	0.37 U	0.37 U	0.75 U	0.37 U	0.37 U	0.37 U	0.37 U	0.37 U	0.37 U	0.37 U	0.37 U	0.74 U	0.62	0.45 U
1,2,4-Trimethylbenzene	0.25 U	0.25 U	0.25 U	0.25 U	0.25 U	0.25 U	0.25 U	0.25 U	0.25 U	0.25 U	0.94	0.25 U	1.1	0.25 U	0.25 U	0.16	0.15 U
1,2-Dibromoethane (EDB)	0.38 U	0.38 U	0.38 U	0.38 U	0.38 U	0.38 U	0.38 U	0.38 U	0.38 U	0.38 U	0.38 U	0.38 U	0.38 U	0.38 U	0.38 U	0.23 U	0.12 U
1,2-Dichlorobenzene	0.3 U	0.3 U	0.3 U	0.3 U	0.3 U	0.3 U	0.3 U	0.3 U	0.3 U	0.3 U	0.3 U	0.3 U	0.3 U	0.3 U	0.30 U	0.34	0.18 U
1,2-Dichloroethane	0.2 U	0.2 U	0.2 U	0.2 U	0.2 U	0.2 U	0.2 U	0.2 U	0.2 U	0.2 U	0.2 U	0.2 U	0.2 U	0.2 U	0.20 U	0.066	0.061 U
1,2-Dichloropropane	0.23 U	0.23 U	0.23 U	0.23 U	0.23 U	0.23 U	0.23 U	0.23 U	0.23 U	0.23 U	0.23 U	0.23 U	0.23 U	0.23 U	0.23 U	0.14 U	0.069 U
1,2-Dichlorotetrafluoroethane	0.35 U	0.35 U	0.35 U	0.35 U	0.35 U	0.35 U	0.35 U	0.35 U	0.35 U	0.35 U	0.35 U						
1,3,5-Trimethylbenzene	0.25 U	0.25 U	0.25 U	0.25 U	0.25 U	0.25 U	0.25 U	0.25 U	0.25 U	0.25 U	0.28	0.25 U	0.33	0.25 U	0.25 U	0.068	0.15 U
1,3-Butadiene	0.11 U	0.23 U	0.23 U	0.23 U	0.23 U	0.23 U	0.11 U	0.23 U	0.11 U	0.11 U	0.29	0.11 U	0.11 U	0.11 U	0.11 U	0.066 U	0.066 U
1,3-Dichlorobenzene	0.3 U	0.3 U	0.3 U	0.3 U	0.3 U	0.3 U	0.3 U	0.3 U	0.3 U	0.3 U	0.3 U	0.3 U	0.3 U	0.3 U	0.30 U	0.18 U	0.18 U
1,4-Dichlorobenzene	0.3 U	0.3 U	0.3 U	0.3 U	0.3 U	0.3 U	0.3 U	0.3 U	0.3 U	0.3 U	0.3 U	0.3 U	0.3 U	0.3 U	0.30 U	0.18 U	0.18 U
1,4-Dioxane															0.18 U		
2-Butanone	2	0.81	1.6	1.6	0.88	1.5	1.4	2.4	2.3	2.7	0.37	1.8 B	2.9 U	5.9 U	0.35	1.4	
2-Hexanone	0.2 U	0.2 U	0.32	0.2 U	0.2 U	0.29	0.29	0.49	0.49	0.41	0.2 U	0.2 U	4.1 U	0.67	0.12 U	0.34	
4-Ethyltoluene	0.25 U	0.25 U	0.25 U	0.25 U	0.25 U	0.25 U	0.25 U	0.25 U	0.25 U	0.3	0.25 U	0.34	0.25 U	0.25 U	0.053	0.15 U	
4-Methyl-2-pentanone	0.2 U	0.2 U	0.2 U	0.34	0.2 U	0.2 U	0.2 U	0.2 U	0.2 U	2.8	0.2 U	0.2 U	0.2 U	0.20 U	0.12 U	0.12 U	
Acetone	11	3.5	7.6	5.0	3.7	9.5	12	20	13	14	5.7 B	19 B	8.7 B	20	4.9	9.4	
Benzene	0.42	0.79	0.68	0.63	0.41	0.69	0.35	0.19	0.16 U	1.2	0.28	2.3	0.16 U	0.19	0.4	0.29	
Benzyl chloride	0.26 U	0.26 U	0.26 U	0.26 U	0.26 U	0.26 U	0.26 U	0.26 U	0.26 U	0.26 U	0.26 U	0.26 U	0.26 U	0.26 U	0.16 U	0.16 U	
Bromodichloromethane	0.33 U	0.33 U	0.33 U	0.33 U	0.33 U	0.33 U	0.33 U	0.33 U	0.33 U	0.33 U	0.34 U	0.34 U	0.34 U	0.34 U	0.2 U	0.1 U	
Bromoform	0.51 U	0.51 U	0.51 U	0.51 U	0.51 U	0.51 U	0.51 U	0.51 U	0.51 U	0.51 U	0.52 U	0.52 U	0.52 U	0.52 U	0.31 U	0.31 U	
Bromomethane	0.19 U	0.19 U	0.19 U	0.19 U	0.19 U	0.19 U	0.19 U	0.19 U	0.19 U	0.19 U	0.19 U	0.19 U	0.19 U	0.19 U	0.12 U	0.12 U	
Carbon disulfide	0.16 U	0.28	0.16 U	0.16 U	0.44	0.16 U	0.16 U	0.16 U	0.16 U	0.16 U	0.38	0.16 U	0.16 U	1.6 U	0.058	0.93 U	
Carbon tetrachloride	0.39	0.42	0.39	0.31 U	0.43	0.49	0.47	0.52	0.51	0.43	0.42	0.48	0.53	0.48	0.49	0.43	
Chlorobenzene	0.23 U	0.23 U	0.23 U	0.23 U	0.23 U	0.23 U	0.23 U	0.23 U	0.23 U	0.23 U	0.23 U	0.23 U	0.23 U	0.23 U	0.14 U	0.14 U	
Chloroethane	0.13 U	0.13 U	0.13 U	0.13 U	0.13 U	0.13 U	0.13 U	0.13 U	0.13 U	0.13 U	0.13 U	0.13 U	0.13 U	0.13 U	0.079 U	0.079 U	
Chloroform	0.24 U	0.24 U	0.24 U	0.24 U	0.24 U	0.24 U	0.24 U	0.24 U	0.24 U	0.24 U	0.24 U	0.24 U	0.24 U	0.24 U	0.094	0.073 U	
Chloromethane	1.6	1.1	1.2	1.3	1.1	1.4	0.78	1.1	0.96	0.99	0.94	1	0.96	1.4	0.062 U	1.1	
cis-1,2-Dichloroethene	0.2 U	0.2 U	0.2 U	0.2 U	0.2 U	0.2 U	0.2 U	0.2 U	0.2 U	0.2 U	0.2 U	0.2 U	0.2 U	0.20 U	0.12	0.059 U	
cis-1,3-Dichloropropene	0.22 U	0.22 U	0.22 U	0.22 U	0.22 U	0.22 U	0.22 U	0.22 U	0.22 U	0.22 U	0.23 U	0.23 U	0.23 U	0.23 U	0.14 U	0.068 U	
Cyclohexane	0.17 U	0.17 U	0.17 U	0.17 U	0.17 U	0.17 U	0.17 U	0.17 U	0.17 U	0.46	0.17 U	0.17 U	0.17 U	0.17 U	0.1 U	0.1 U	
Dibromochloromethane	0.43 U	0.43 U	0.43 U	0.43 U	0.43 U	0.43 U	0.43 U	0.43 U	0.43 U	0.43 U	0.43 U	0.43 U	0.43 U	0.43 U	0.26 U	0.13 U	
Dichlorodifluoromethane	2.1	2.3	2.4	2.5	2.9	1.8	2.1	2.5	2.4	2.9	1.9	3.1	1.9	1.7	2.5	2	
Ethanol	3.8	5.4	5.1	7.2	1.2	4.9	4	3.3	4	14	2.3	12	2.7	5.8	1.5	4.1	
Ethyl acetate	0.18 U	0.18 U	0.18 U	0.18 U	1.1	0.18 U	0.18 U	0.18 U	0.18 U	0.18 U	0.18 U	0.18 U	0.18 U	0.18 U	0.46	0.56	

**Table 3.
Summary of Analytical Results - Air Sampling for Large Retail Space
Former Gorham Manufacturing Site
Providence, Rhode Island**

Parameter (ug/m ³)	Outdoor Air Reference Locations															
	AA-1-122909 12/29/2009	AA-1-012810 1/28/2010	AA-1-020510 2/5/2010	AA-1-021210 2/12/2010	AA-1-021910 2/19/2010	AA-1-032610 3/26/2010	AA-1-043010 4/30/2010	AA-1-052810 5/28/2010	AA-1-070110 7/1/2010	AA-1-091610 9/16/2010	AA-1-120710 12/7/2010	AA-1-021711 2/17/2011	AA-1-060211 6/6/2011	AA-1-091511 9/15/2011	AA-1-120811 12/8/2011	AA-1-030812 3/8/2012
Ethylbenzene	0.22 U	0.22 U	0.22 U	0.22 U	0.22 U	0.22 U	0.22 U	0.22 U	0.82	1.4	0.22 U	1.1	0.22 U	0.22 U	0.31	0.13 U
Hexachlorobutadiene	1.1 U	0.53 U	0.53 U	0.53 U	0.53 U	1.1 U	0.53 U	0.53 U	0.53 U	0.53 U	0.53 U	0.53 U	0.53 U	0.53 U	0.32 U	0.32 U
Hexane	0.62	0.36	0.53	0.91	0.24	0.23	1.1	0.51	0.37	1.2	0.35 U	3.3	0.88	7.0 U	0.47	0.54
Isopropyl alcohol	0.54	0.56	2.7	1.5	0.8	0.73	0.69	1.6	0.79	0.25 U	0.29	2.4	1.2 U	4.9 U	0.6	0.88
m,p-Xylene	0.43 U	0.43 U	0.50	0.47	0.43 U	0.49	0.43 U	0.43 U	2.2	3.7	0.43 U	3.3	0.43 U	0.43 U	0.41	0.17
Methyl methacrylate											0.2 U	0.48	0.2 U	0.20 U	0.12 U	0.12 U
Methylene chloride	4.6	1.3	1.9	1.7	0.7 U	0.7 U	0.7 U	0.35 U	1.1	1.1	0.66	3	2.3	1.7 U	1.5	1.6
Methyl-t-butyl ether	0.18 U	0.18 U	0.18 U	0.18 U	0.18 U	0.18 U	0.18 U	0.18 U	0.18 U	0.18 U	0.18 U	0.18 U	0.18 U	0.18 U	0.11 U	0.11 U
n-Heptane	0.2 U	0.26	0.2 U	0.2 U	0.2 U	0.2 U	0.2 U	0.2 U	0.2 U	0.91	0.2 U	0.95	0.2 U	0.20 U	0.12	0.089
o-Xylene	0.22 U	0.22 U	0.22 U	0.22 U	0.22 U	0.22 U	0.22 U	0.22 U	0.46	1.2	0.22 U	1.1	0.22 U	0.22 U	0.22	0.086
Propylene (Propene)	0.35 U	0.35 U	0.35 U	0.35 U	0.35 U	0.35 U	0.35 U	0.87 U	0.87 U	1.9	0.86 U	0.86 U	0.86 U	3.4 U	2.1 U	2.1 U
Styrene	0.21 U	0.21 U	0.21 U	0.21 U	0.21 U	0.21 U	0.21 U	0.21 U	0.21 U	0.21 U	0.21 U	0.21 U	0.21 U	0.21 U	0.37	0.13 U
Tetrachloroethene	0.34 U	0.34 U	0.34 U	0.34 U	0.34 U	0.34 U	0.34 U	0.34 U	0.34 U	0.49	0.34 U	5.3	0.34 U	0.34 U	0.73	0.1 U
Tetrahydrofuran	0.15 U	0.15 U	0.15 U	0.15 U	0.19	0.15 U	0.15 U	0.15 U	0.15 U	0.15 U	0.15 U	0.15 U	0.15 U	0.15 U	0.057	0.088 U
Toluene	0.78	0.94	0.64	0.97	0.46	1.1	0.75	0.63	0.57	10	0.19 U	5.3	0.52	0.47	0.56	0.37
trans-1,2-Dichloroethene	0.2 U	0.2 U	0.2 U	0.2 U	0.2 U	0.2 U	0.2 U	0.2 U	0.2 U	0.2 U	0.2 U	0.2 U	0.2 U	0.20 U	0.12 U	0.059 U
trans-1,3-Dichloropropene	0.22 U	0.22 U	0.22 U	0.22 U	0.22 U	0.22 U	0.22 U	0.22 U	0.22 U	0.22 U	0.23 U	0.23 U	0.23 U	0.23 U	0.14 U	0.068 U
Trichloroethene	0.27 U	0.27 U	0.27 U	0.30	0.27 U	0.27 U	0.27 U	0.27 U	0.27 U	0.27 U	0.27 U	0.27 U	0.27 U	0.27 U	0.67	0.081 U
Trichlorofluoromethane	2.2	1.2	1.2	1.6	1.5	1.5	1.2	1.4	1.3	11	1.2	1.7	1.5	1.5	1.7	1.1
Trichlorotrifluoroethane	0.54	0.49	0.55	0.54	0.54	0.62	0.45	0.58	0.56	0.44	0.56	0.66	0.69	0.58	0.89	0.43
Vinyl acetate	0.36 U	0.71 U	0.71 U	0.71 U	0.71 U	0.36 U	0.71 U	0.18 U	0.18 U	0.36 U	0.35 U	0.18 U	3.5 U	0.18 U	0.11 U	0.21 U
Vinyl chloride	0.13 U	0.13 U	0.13 U	0.13 U	0.13 U	0.13 U	0.13 U	0.13 U	0.13 U	0.13 U	0.13 U	0.13 U	0.13 U	0.13 U	0.077 U	0.038 U

**Table 3.
Summary of Analytical Results - Air Sampling for Large Retail Space
Former Gorham Manufacturing Site
Providence, Rhode Island**

Parameter (ug/m ³)	Extraction Well - Large Retail Space													
	EW- Combined- 020309 2/3/2009	EW- COMBINED 021109 2/11/2009	EW- COMBINED 021809 2/18/2009	EW- COMBINED 022609 2/26/2009	EW- COMBINED 041409 4/14/2009	EW- COMBINED 042409 4/24/2009	EW- COMBINED 091709 9/17/2009	EW- COMBINED 092409 9/24/2009	EW- COMBINED 100109 10/1/2009	EW- COMBINED 100809 10/8/2009	EW- COMBINED 012810 1/28/2010	EW- COMBINED 020510 2/5/2010	EW- COMBINED 021210 2/12/2010	EW- COMBINED 021910 2/19/2010
1,1,1-Trichloroethane	190000	91000	73000	32000	35000	19000	11000	8100	7900	6800	1500	2500	150	1200
1,1,1,2,2-Tetrachloroethane	6.8 U	6.8 U	14 U	14 U	6.8 U	0.34 U	3.4 U	6.8 U	14 U	14 U	0.68 U	6.8 U	0.34 U	0.68 U
1,1,2-Trichloroethane	5.4 U	5.4 U	11 U	11 U	5.4 U	0.65	2.7 U	5.4 U	11 U	11 U	0.54 U	5.4 U	0.27 U	0.54 U
1,1-Dichloroethane	19000	7800	5300	4800	390	2200	1600	1900	1900	1700	280	370	31	310
1,1-Dichloroethene	7800	1800	1000	630	73	420	310	250	260	280	52	66	7.3	62
1,2,4-Trichlorobenzene	7.4 U	7.4 U	15 U	15 U	7.4 U	0.37 U	3.7 U	7.4 U	15 U	15 U	0.74 U	7.4 U	0.37 U	0.74 U
1,2,4-Trimethylbenzene	5 U	5 U	10 U	10 U	5 U	0.25 U	2.5 U	5 U	10 U	10 U	0.5 U	5 U	0.25 U	0.5 U
1,2-Dibromoethane (EDB)	7.6 U	7.6 U	16 U	16 U	7.6 U	0.38 U	3.8 U	7.6 U	16 U	16 U	0.76 U	7.6 U	0.38 U	0.76 U
1,2-Dichlorobenzene	6 U	6 U	12 U	12 U	6 U	0.3 U	3 U	6 U	12 U	12 U	0.6 U	6 U	0.3 U	0.6 U
1,2-Dichloroethane	4 U	4 U	8 U	8 U	4 U	0.2 U	2 U	4 U	8 U	8 U	0.4 U	4 U	0.2 U	0.4 U
1,2-Dichloropropane	4.6 U	4.6 U	9.2 U	9.2 U	4.6 U	0.23 U	2.3 U	4.6 U	9.2 U	9.2 U	0.46 U	4.6 U	0.23 U	0.46 U
1,2-Dichlorotetrafluoroethane	7 U	7 U	14 U	14 U	7 U	0.35 U	3.5 U	7 U	14 U	14 U	0.7 U	7 U	0.35 U	0.7 U
1,3,5-Trimethylbenzene	5 U	5 U	10 U	10 U	5 U	0.25 U	2.5 U	5 U	10 U	10 U	0.5 U	5 U	0.25 U	0.5 U
1,3-Butadiene	2.2 U	2.2 U	4.4 U	4.4 U	2.2 U	0.11 U	2.3 U	4.5 U	8.9 U	8.9 U	0.45 U	4.5 U	0.23 U	0.45 U
1,3-Dichlorobenzene	6 U	6 U	12 U	12 U	6 U	0.3 U	3 U	6 U	12 U	12 U	0.6 U	6 U	0.3 U	0.6 U
1,4-Dichlorobenzene	6 U	6 U	12 U	12 U	6 U	0.3 U	3 U	6 U	12 U	12 U	0.6 U	6 U	0.3 U	0.6 U
1,4-Dioxane														
2-Butanone	37	32	48	60	21	40	7.8	31	30	21	4	11	10	9
2-Hexanone	4 U	4 U	8 U	8 U	4 U	0.5	2 U	4 U	8 U	8 U	0.4 U	4 U	0.2 U	0.4 U
4-Ethyltoluene	5 U	5 U	10 U	10 U	5 U	0.25 U	2.5 U	5 U	10 U	10 U	0.5 U	5 U	0.25 U	0.5 U
4-Methyl-2-pentanone	4 U	4 U	8 U	8 U	4 U	0.59	2 U	4 U	8 U	8 U	0.4 U	4 U	0.28	0.4 U
Acetone	1600	31	75	63	4.8 U	0.24 U	20	9.6 U	20 U	20 U	31	9.6 U	13	0.96 U
Benzene	14	7.3	8.4	6.4 U	3.2 U	2.5	2.7	3.2 U	6.4 U	6.4 U	0.61	3.2 U	0.63	0.43
Benzyl chloride	5.2 U	5.2 U	11 U	11 U	5.2 U	0.26 U	2.6 U	5.2 U	11 U	11 U	0.52 U	5.2 U	0.26 U	0.52 U
Bromodichloromethane	6.6 U	6.6 U	14 U	14 U	6.6 U	0.33 U	3.3 U	6.6 U	14 U	14 U	0.66 U	6.6 U	0.33 U	0.66 U
Bromoform	11 U	11 U	21 U	21 U	11 U	0.51 U	5.1 U	11 U	21 U	21 U	1.1 U	11 U	0.51 U	1.1 U
Bromomethane	3.8 U	3.8 U	7.6 U	7.6 U	3.8 U	0.19 U	1.9 U	3.8 U	7.6 U	7.6 U	0.38 U	3.8 U	0.19 U	0.38 U
Carbon disulfide	3.2 U	63	32	20	3.2 U	4.6	1.6 U	3.2 U	6.4 U	6.4 U	4.3	3.2 U	0.17	3.8
Carbon tetrachloride	6.2 U	6.2 U	13 U	13 U	6.2 U	0.57	3.1 U	6.2 U	13 U	13 U	0.62 U	6.2 U	0.38	0.62 U
Chlorobenzene	4.6 U	4.6 U	9.2 U	9.2 U	4.6 U	0.23 U	2.3 U	4.6 U	9.2 U	9.2 U	0.46 U	4.6 U	0.23 U	0.46 U
Chloroethane	3400	1700	1200	450	42	220	110	94	92	88	9.8	11	1.3	9.9
Chloroform	27	17	20	17	4.8 U	8.8	12	14	11	11	4.1	5.8	0.49	6.2
Chloromethane	2 U	2 U	4 U	4 U	2 U	8.2	1 U	2 U	4 U	4 U	0.2 U	2 U	0.1 U	0.2 U
cis-1,2-Dichloroethene	14000	4700	6300	4200	300	1600	1600	1500	1300	1200	190	280	21	240
cis-1,3-Dichloropropene	4.4 U	4.4 U	8.8 U	8.8 U	4.4 U	0.22 U	2.2 U	4.4 U	8.8 U	8.8 U	0.44 U	4.4 U	0.22 U	0.44 U
Cyclohexane	3.4 U	3.4 U	6.8 U	6.8 U	3.4 U	0.17 U	1.7 U	3.4 U	6.8 U	6.8 U	0.34 U	3.4 U	0.17 U	0.34 U
Dibromochloromethane	8.6 U	8.6 U	18 U	18 U	8.6 U	0.43 U	4.3 U	8.6 U	18 U	18 U	0.86 U	8.6 U	0.43 U	0.86 U
Dichlorodifluoromethane	5 U	5 U	10 U	110	5 U	2.8	2.5 U	5 U	10 U	10 U	2.4	5 U	2.2	2.7
Ethanol	960	81	120	120	17	21	200	96	32	33	39	60	23	62
Ethyl acetate	7.3 U	3.6 U	7.2 U	15 U	7.3 U	0.37 U	1.8 U	3.6 U	7.2 U	7.2 U	0.36 U	3.6 U	0.18 U	0.36 U

**Table 3.
Summary of Analytical Results - Air Sampling for Large Retail Space
Former Gorham Manufacturing Site
Providence, Rhode Island**

Parameter (ug/m ³)	Extraction Well - Large Retail Space													
	EW- Combined- 020309 2/3/2009	EW- COMBINED 021109 2/11/2009	EW- COMBINED 021809 2/18/2009	EW- COMBINED 022609 2/26/2009	EW- COMBINED 041409 4/14/2009	EW- COMBINED 042409 4/24/2009	EW- COMBINED 091709 9/17/2009	EW- COMBINED 092409 9/24/2009	EW- COMBINED 100109 10/1/2009	EW- COMBINED 100809 10/8/2009	EW- COMBINED 012810 1/28/2010	EW- COMBINED 020510 2/5/2010	EW- COMBINED 021210 2/12/2010	EW- COMBINED 021910 2/19/2010
Ethylbenzene	9.4	4.4 U	8.8 U	8.8 U	4.4 U	0.22 U	2.2 U	4.4 U	8.8 U	8.8 U	0.44 U	4.4 U	0.22 U	0.44 U
Hexachlorobutadiene	22 U	22 U	43 U	43 U	22 U	1.1 U	5.3 U	11 U	22 U	22 U	1.1 U	11 U	0.53 U	1.1 U
Hexane	16	4.9	270	7.2 U	3.6 U	2.3	1.9	3.6 U	7.2 U	7.2 U	0.36 U	3.6 U	0.74	0.36 U
Isopropyl alcohol	610	2.4 U	15	9.9 U	5 U	0.25 U	22	5 U	9.9 U	9.9 U	2.3	5 U	1.0	0.5 U
m,p-Xylene	25	8.6 U	18 U	18 U	8.6 U	0.43 U	4.3 U	8.6 U	18 U	18 U	0.86 U	8.6 U	0.49	0.86 U
Methyl methacrylate														
Methylene chloride	12	7 U	14 U	14 U	19	2.6	7 U	14 U	28 U	28 U	1.4 U	14 U	2.6	1.4 U
Methyl-t-butyl ether	3.6 U	3.6 U	7.2 U	7.2 U	3.6 U	0.18 U	1.8 U	3.6 U	7.2 U	7.2 U	0.36 U	3.6 U	0.18 U	0.36 U
n-Heptane	4 U	4 U	8 U	8 U	4 U	0.2 U	2 U	4 U	8 U	8 U	0.4 U	4 U	0.2 U	0.4 U
o-Xylene	8.4	4.4 U	8.8 U	8.8 U	4.4 U	0.22 U	2.2 U	4.4 U	8.8 U	8.8 U	0.44 U	4.4 U	0.22 U	0.44 U
Propylene (Propene)	3.5 U	100	3.6 U	6.9 U	3.5 U	0.18 U	3.5 U	6.9 U	6.9 U	14 U	0.69 U	6.9 U	0.35 U	0.69 U
Styrene	4.2 U	4.2 U	8.4 U	8.4 U	4.2 U	0.21 U	2.1 U	4.2 U	8.4 U	8.4 U	0.42 U	4.2 U	0.21 U	0.42 U
Tetrachloroethene	140	60	430	540	47	110	110	260	67	72	4.6	200	4.8	45
Tetrahydrofuran	77	77	150	180	66	110	1.5 U	96	85	67	15	32	28	43
Toluene	36	3.8 U	7.6 U	7.6 U	3.8 U	0.59	3.4	4.7	7.6 U	7.6 U	0.38 U	3.8 U	3.6	0.38 U
trans-1,2-Dichloroethene	110	61	47	47	4.6	33	29	34	30	26	3.4	4.6	0.36	4.1
trans-1,3-Dichloropropene	4.4 U	4.4 U	8.8 U	8.8 U	4.4 U	0.22 U	2.2 U	4.4 U	8.8 U	8.8 U	0.44 U	4.4 U	0.22 U	0.44 U
Trichloroethene	36000	17000	26000	13000	1400	6200	4000	3600	4000	4300	390	1400	58	460
Trichlorofluoromethane	9900	2300	1800	1000	98	600	1800	1400	1500	1500	260	230	29	230
Trichlorotrifluoroethane	7.6 U	7.6 U	16 U	16 U	7.6 U	0.74	3.8 U	7.6 U	16 U	16 U	0.76 U	7.6 U	0.53	0.76 U
Vinyl acetate	15 U	3.6 U	7.2 U	29 U	15 U	0.71 U	7.1 U	15 U	29 U	29 U	1.5 U	15 U	0.71 U	1.5 U
Vinyl chloride	110	20	10	5.2 U	2.6 U	3.4	1.3 U	2.6 U	5.2 U	5.2 U	0.26 U	2.6 U	0.13 U	0.26 U

**Table 3.
Summary of Analytical Results - Air Sampling for Large Retail Space
Former Gorham Manufacturing Site
Providence, Rhode Island**

Parameter (ug/m ³)	Extraction Well - Large Retail Space																
	EW-COMBINED 043010 4/30/2010	EW-COMBINED 052810 5/28/2010	EW-COMBINED 070110 7/1/2010	EW-COMBINED 091610 9/16/2010	EW-COMBINED 120710 12/7/2010	EW-COMBINED 021711 2/17/2011	EW-COMBINED 091511 9/15/2011	EW-Combined- 120811 12/8/2011	EW-Combined- 030812 3/8/2012	EW-1- 030609 3/6/2009	EW-1- 033109 3/31/2009	EW-2- 030609 3/6/2009	EW-2- 033109 3/31/2009	EW-3- 030609 3/6/2009	EW-3- 033109 3/31/2009	EW-4- 030609 3/6/2009	EW-4- 033109 3/31/2009
1,1,1-Trichloroethane	1400	1700	2000	4700	280 D	2500 D	2400	340	1100	59000	66000	26000	30000	54000	72000	11000	14000
1,1,1,2,2-Tetrachloroethane	0.68 U	6.8 U	0.68 U	0.68 U	0.69 UD	0.69 UD	1.4 U	0.69 U	3.4 U	6.8 U	6.8 U	6.8 U	6.8 U	6.8 U	6.8 U	1.7 U	6.8 U
1,1,2-Trichloroethane	0.54 U	5.4 U	0.54 U	0.55	0.55 UD	0.55 UD	1.1 U	0.55 U	2.7 U	6.4	10	5.4 U	5.4 U	5.4 U	5.4 U	1.4 U	5.4 U
1,1-Dichloroethane	200	270	290	330	36 D	170 D	200	70	78	4100	4400	5700	7000	1600	2300	690	1400
1,1-Dichloroethene	30	40	52	81	7.3 D	58 D	44	21	34	570	1200	330	640	340	560	97	210
1,2,4-Trichlorobenzene	0.74 U	7.4 U	0.74 U	0.74 U	0.74 UD	0.74 UD	3.0 U	1.5 U	3800	7.4 U	7.4 U	7.4 U	7.4 U	7.4 U	7.4 U	1.9 U	7.4 U
1,2,4-Trimethylbenzene	0.5 U	5 U	0.5 U	0.5 U	0.49 UD	0.49 UD	0.98 U	1.2	4.9 U	5 U	5 U	5 U	5 U	5 U	5 U	1.3 U	5 U
1,2-Dibromoethane (EDB)	0.76 U	7.6 U	0.76 U	0.76 U	0.77 UD	0.77 UD	1.5 U	0.77 U	3.8 U	7.6 U	7.6 U	7.6 U	7.6 U	7.6 U	7.6 U	1.9 U	7.6 U
1,2-Dichlorobenzene	0.6 U	6 U	0.6 U	0.6 U	0.6 UD	0.6 UD	1.2 U	0.6 U	7.3	6 U	6 U	6 U	6 U	6 U	6 U	1.5 U	6 U
1,2-Dichloroethane	0.4 U	4 U	0.4 U	0.4 U	0.4 UD	0.4 UD	0.81 U	0.4 U	2 U	4 U	4 U	4 U	4 U	4 U	4 U	1 U	4 U
1,2-Dichloropropane	0.46 U	4.6 U	0.46 U	0.46 U	0.46 UD	0.46 UD	0.92 U	0.46 U	2.3 U	4.6 U	4.6 U	4.6 U	4.6 U	4.6 U	4.6 U	1.2 U	4.6 U
1,2-Dichlorotetrafluoroethane	0.7 U	7 U	0.7 U	0.7 U						7 U	7 U	7 U	7 U	7 U	7 U	1.8 U	7 U
1,3,5-Trimethylbenzene	0.5 U	5 U	0.5 U	0.5 U	0.49 UD	0.49 UD	0.98 U	0.29	4.9 U	5 U	5 U	5 U	5 U	5 U	5 U	1.3 U	5 U
1,3-Butadiene	0.45 U	2.2 U	0.22 U	0.22 U	0.22 UD	0.22 UD	0.44 U	0.22 U	2.2 U	2.2 U	2.2 U	2.2 U	2.2 U	2.2 U	2.2 U	0.55 U	2.2 U
1,3-Dichlorobenzene	0.6 U	6 U	0.6 U	0.6 U	0.6 UD	0.6 UD	1.2 U	0.6 U	6 U	6 U	6 U	6 U	6 U	6 U	6 U	1.5 U	6 U
1,4-Dichlorobenzene	0.6 U	6 U	0.6 U	0.6 U	0.6 UD	0.6 UD	1.2 U	0.6 U	6 U	6 U	6 U	6 U	6 U	6 U	6 U	1.5 U	6 U
1,4-Dioxane							0.72 U										
2-Butanone	12.0	22.0	22.0	10.0	4.5 D	4.5 BD	24 U	1.3	120 U	3.5	8.9	12.0	11	36	10	36	6.4
2-Hexanone	0.4 U	4 U	0.4 U	0.4 U	0.41 UD	0.41 UD	0.82 U	0.16	4.1 U	4 U	4 U	4 U	4 U	4 U	4 U	1 U	4 U
4-Ethyltoluene	0.5 U	5 U	0.5 U	0.5 U	0.49 UD	0.49 UD	0.98 U	0.27	4.9 U	5 U	5 U	5 U	5 U	5 U	5 U	1.3 U	5 U
4-Methyl-2-pentanone	0.4 U	4 U	0.4 U	0.4 U	0.41 UD	0.41 UD	0.82 U	0.16	4.1 U	4 U	4 U	4 U	4 U	4 U	4 U	1 U	4 U
Acetone	16	24	16	6.6	11 BD	6.3 BD	19 U	6.6	22	35	16	9.6 U	9.6 U	53	24	26	12
Benzene	0.74	5.5	0.84	1.7	0.5 D	0.72 D	0.77	0.56	3.2 U	5.3	11	5.6	7.8	3.2 U	6.8	1.4	3.2 U
Benzyl chloride	0.52 U	5.2 U	0.52 U	0.52 U	0.52 UD	0.52 UD	1.0 U	0.52 U	5.2 U	5.2 U	5.2 U	5.2 U	5.2 U	5.2 U	5.2 U	1.3 U	5.2 U
Bromodichloromethane	0.66 U	6.6 U	0.66 U	0.66 U	0.67 UD	0.67 UD	1.3 U	0.67 U	3.4 U	6.6 U	6.6 U	6.6 U	6.6 U	6.6 U	6.6 U	1.7 U	6.6 U
Bromoform	1.1 U	11 U	1.1 U	1.1 U	1 UD	1 UD	2.1 U	1 U	10 U	11 U	11 U	11 U	11 U	11 U	11 U	2.6 U	11 U
Bromomethane	0.38 U	3.8 U	0.38 U	0.38 U	0.39 UD	0.39 UD	0.78 U	0.39 U	3.9 U	3.8 U	3.8 U	3.8 U	3.8 U	3.8 U	3.8 U	0.95 U	3.8 U
Carbon disulfide	0.77	3.2 U	1.1	1.3	0.31 UD	0.73 D	6.2 U	3.1 U	31 U	3.2 U	3.2 U	27	25	3.2 U	3.2 U	1.8	3.2 U
Carbon tetrachloride	0.62 U	6.2 U	0.73	1.1	0.63 UD	0.63 D	1.3 U	0.48	3.1 U	6.2 U	6.2 U	6.2 U	6.2 U	6.2 U	6.2 U	1.6 U	6.2 U
Chlorobenzene	0.46 U	7.2	0.46 U	0.46 U	0.46 UD	0.46 UD	0.92 U	0.46 U	4.6 U	4.6 U	4.6 U	4.6 U	4.6 U	4.6 U	4.6 U	1.2 U	4.6 U
Chloroethane	4.8	7.2	9.4	17	1 D	3.6 D	6.7	2.1	2.6 U	170	250	700	590	41	44	17	33
Chloroform	6	7.9	8	8.3	1.6 D	6.9 D	7.6	2.7	3.2	20	34	9.6	15	13	23	3.6	7.5
Chloromethane	0.2 U	2 U	0.2 U	0.2 U	0.21 UD	0.21 UD	0.41 U	0.21 U	2.1 U	2 U	2 U	2 U	2 U	2 U	2 U	0.5 U	2 U
cis-1,2-Dichloroethene	180	260	260	360	28 D	120 D	160	38	47	2000	2200	6100	7600	610	1200	560	1300
cis-1,3-Dichloropropene	0.44 U	4.4 U	0.44 U	0.44 U	0.45 UD	0.45 UD	0.91 U	0.45 U	2.3 U	4.4 U	4.4 U	4.4 U	4.4 U	4.4 U	4.4 U	1.1 U	4.4 U
Cyclohexane	0.34 U	3.4 U	0.34 U	0.55	0.34 UD	0.34 UD	0.69 U	0.34 U	3.4 U	3.4 U	5.7	8.4	8.8	3.4 U	3.4 U	0.85 U	3.4 U
Dibromochloromethane	0.86 U	8.6 U	0.86 U	0.86 U	0.85 UD	0.85 UD	1.7 U	0.85 U	4.3 U	8.6 U	8.6 U	8.6 U	8.6 U	8.6 U	8.6 U	2.2 U	8.6 U
Dichlorodifluoromethane	1.7	5 U	2.5	1.6	3 D	4.1 D	2.9	2.9	4.9 U	5 U	170	5 U	5 U	5.4	7	2.6	5 U
Ethanol	10	19 U	15	1.9 U	8.2 D	17 D	15 U	9.2	75 U	33	40	12	8.3	39	1.8 U	8.6	1.8 U
Ethyl acetate	0.36 U	3.6 U	0.36 U	0.36 U	0.36 UD	0.36 UD	0.72 U	1.2	3.6 U	3.6 U	3.6 U	3.6 U	3.6 U	3.6 U	3.6 U	0.9 U	3.6 U

**Table 3.
Summary of Analytical Results - Air Sampling for Large Retail Space
Former Gorham Manufacturing Site
Providence, Rhode Island**

Parameter (ug/m ³)	Extraction Well - Large Retail Space																
	EW-COMBINED 043010 4/30/2010	EW-COMBINED 052810 5/28/2010	EW-COMBINED 070110 7/1/2010	EW-COMBINED 091610 9/16/2010	EW-COMBINED 120710 12/7/2010	EW-COMBINED 021711 2/17/2011	EW-COMBINED 091511 9/15/2011	EW-Combined- 120811 12/8/2011	EW-Combined- 030812 3/8/2012	EW-1- 030609 3/6/2009	EW-1- 033109 3/31/2009	EW-2- 030609 3/6/2009	EW-2- 033109 3/31/2009	EW-3- 030609 3/6/2009	EW-3- 033109 3/31/2009	EW-4- 030609 3/6/2009	EW-4- 033109 3/31/2009
Ethylbenzene	0.44 U	4.4 U	0.44 U	0.58	0.43 UD	0.43 UD	0.87 U	0.58	4.3 U	4.4 U	4.4 U	4.4 U	4.4 U	4.4 U	4.4 U	1.1 U	4.4 U
Hexachlorobutadiene	1.1 U	11 U	1.1 U	1.1 U	1.1 UD	1.1 UD	2.1 U	1.1 U	11 U	22 U	22 U	22 U	22 U	22 U	22 U	5.4 U	22 U
Hexane	0.92	3.6 U	0.44	0.71 U	0.7 UD	0.8 D	28 U	0.66	140 U	3.6 U	3.6 U	3.6 U	6.6	3.6 U	3.6 U	3.2	3.6 U
Isopropyl alcohol	2.6	2.4 U	0.24 U	0.5 U	0.84 D	0.25 UD	20 U	9.8 U	98 U	28	2.4 U	2.4 U	2.4 U	26	5.9	7.5	7.1
m,p-Xylene	0.86 U	8.6 U	0.86 U	1.6	0.87 UD	0.87 JD	1.7 U	1.6	8.7 U	8.6 U	8.6 U	8.6 U	8.6 U	8.6 U	8.6 U	2.2 U	8.6 U
Methyl methacrylate						0.41 UD	0.82 U	0.41 U									
Methylene chloride	1.4 U	7 U	2.1	0.9	0.78 D	2.9 D	6.9 U	2.2	8.1	7 U	19	7 U	17	7 U	13	19	12
Methyl-t-butyl ether	0.36 U	3.6 U	0.36 U	0.36 U	0.36 UD	0.36 UD	0.72 U	0.24	3.6 U	3.6 U	3.6 U	3.6 U	3.6 U	3.6 U	3.6 U	0.9 U	3.6 U
n-Heptane	0.4 U	4 U	0.4 U	0.4 U	0.41 UD	0.41 UD	0.82 U	0.23	4.1 U	4 U	4 U	4 U	4 U	4 U	4 U	1 U	4 U
o-Xylene	0.44 U	4.4 U	0.44 U	0.56	0.43 UD	0.43 UD	0.87 U	0.69	4.3 U	4.4 U	4.4 U	4.4 U	4.4 U	4.4 U	4.4 U	1.1 U	4.4 U
Propylene (Propene)	0.69 U	18 U	1.8 U	0.69 U	1.8 D	1.7 UD	14 U	6.9 U	13	1.8 U	1.8 U	1.8 U	1.8 U	1.8 U	1.8 U	0.45 U	1.8 U
Styrene	0.42 U	4.2 U	0.42 U	0.42 U	0.43 UD	0.43 UD	0.85 U	0.21	4.3 U	4.2 U	4.2 U	4.2 U	4.2 U	4.2 U	4.2 U	1.1 U	4.2 U
Tetrachloroethene	450	1300	640	750	160 D	920 D	440	8.1	170	600	1200	2300	2500	73	310	31	170
Tetrahydrofuran	34	54	65	31	11 D	11 D	21	0.27	8.3	6.3	21	19	3 U	32	14	37	5.1
Toluene	0.75	3.8 U	0.41	3.5	0.38 D	1.4 D	0.75 U	2.5	3.8 U	3.8 U	3.8 U	3.8 U	3.8 U	3.8 U	3.8 U	1.4	3.8 U
trans-1,2-Dichloroethene	3	4.6	5.5	6.6	0.6 D	1.9 D	3.5	1.1	2 U	9.2	23	69	180	4 U	8.8	2.5	8
trans-1,3-Dichloropropene	0.44 U	4.4 U	0.44 U	0.44 U	0.45 UD	0.45 UD	0.91 U	0.45 U	2.3 U	4.4 U	4.4 U	4.4 U	4.4 U	4.4 U	4.4 U	1.1 U	4.4 U
Trichloroethene	1200	2000	1700	3200	240 D	1800 D	1900	97	730	31000	42000	25000	25000	8600	19000	2700	5500
Trichlorofluoromethane	210	300	440	410	71 D	200 D	610	200	150	520	540	1300	1800	430	840	240	370
Trichlorotrifluoroethane	0.76 U	7.6 U	0.76 U	0.76 U	0.77 UD	0.77 UD	1.5 U	0.89	3.8 U	7.6 U	7.6 U	7.6 U	7.6 U	7.6 U	7.6 U	1.9 U	7.6 U
Vinyl acetate	1.5 U	3.6 U	0.36 U	0.71 U	0.7 UD	0.35 UD	0.70 U	0.35 U	7 U	3.6 U	3.6 U	3.6 U	3.6 U	3.6 U	3.6 U	0.9 U	3.6 U
Vinyl chloride	0.26 U	2.6 U	0.26 U	0.4	0.26 UD	0.26 UD	0.51 U	0.26 U	1.3 U	2.7	4.8	9.4	8.1	2.6 U	2.6 U	0.65	2.6 U

**Table 3.
Summary of Analytical Results - Air Sampling for Large Retail Space
Former Gorham Manufacturing Site
Providence, Rhode Island**

Parameter (ug/m ³)	Post Treatment - Large Retail Space						
	Post carbon-020309 2/3/2009	POST CARBON-021109 2/11/2009	POST CARBON-021809 2/18/2009	POST CARBON-022609 2/26/2009	POST CARBON-041409 4/14/2009	POST CARBON-100809 10/8/2009	Post-Carbon-010810 1/8/2010
1,1,1-Trichloroethane	1	15	45	1.9	13000	0.56	450
1,1,2,2-Tetrachloroethane	0.34 U	1.7 U	0.68 U	0.68 U	68 U	0.34 U	0.34 U
1,1,2-Trichloroethane	0.27 U	1.4 U	0.54 U	0.54 U	54 U	0.27 U	0.27 U
1,1-Dichloroethane	0.2 U	1 U	5.4	11000	490	370	610
1,1-Dichloroethene	0.2 U	1 U	0.4 U	6400	96	78	87
1,2,4-Trichlorobenzene	0.37 U	1.9 U	0.74 U	0.74 U	74 U	0.37 U	0.37 U
1,2,4-Trimethylbenzene	0.25 U	1.3 U	0.5 U	0.5 U	50 U	0.25 U	0.25 U
1,2-Dibromoethane (EDB)	0.38 U	1.9 U	0.76 U	0.76 U	76 U	0.38 U	0.38 U
1,2-Dichlorobenzene	0.3 U	1.5 U	0.6 U	0.6 U	60 U	0.3 U	0.3 U
1,2-Dichloroethane	0.2 U	1 U	0.4 U	0.4 U	40 U	0.2 U	0.2 U
1,2-Dichloropropane	0.23 U	1.2 U	0.46 U	0.46 U	46 U	0.23 U	0.23 U
1,2-Dichlorotetrafluoroethane	0.35 U	1.8 U	0.7 U	0.7 U	70 U	0.35 U	0.35 U
1,3,5-Trimethylbenzene	2.1	1.3 U	0.5 U	0.5 U	50 U	0.25 U	0.25 U
1,3-Butadiene	0.11 U	0.55 U	0.22 U	0.22 U	22 U	0.23 U	0.23 U
1,3-Dichlorobenzene	2.9	1.5 U	0.6 U	0.6 U	60 U	0.3 U	0.3 U
1,4-Dichlorobenzene	0.3 U	1.5 U	0.6 U	0.6 U	60 U	0.3 U	0.3 U
1,4-Dioxane							
2-Butanone	10	6.3	9.4	5.5	330	1.9	2.0
2-Hexanone	0.2 U	1 U	0.4 U	0.4 U	13000	0.27	0.34
4-Ethyltoluene	2.1	1.3 U	0.5 U	0.5 U	50 U	0.25 U	0.25 U
4-Methyl-2-pentanone	5	1 U	0.4 U	0.4 U	40 U	0.2 U	0.2 U
Acetone	1200	11	19	12	430	3.6	5.7
Benzene	1.3	0.8 U	0.32 U	0.32 U	32 U	0.16 U	0.16 U
Benzyl chloride	0.26 U	1.3 U	0.52 U	0.52 U	52 U	0.26 U	0.26 U
Bromodichloromethane	0.33 U	1.7 U	0.66 U	0.66 U	66 U	0.33 U	0.33 U
Bromoform	0.51 U	2.6 U	1.1 U	1.1 U	110 U	0.51 U	0.51 U
Bromomethane	0.19 U	0.95 U	0.38 U	0.38 U	38 U	0.19 U	0.19 U
Carbon disulfide	0.16 U	0.8 U	4.1	27	250	0.16 U	0.20
Carbon tetrachloride	0.38	1.6 U	0.62 U	0.62 U	62 U	0.31 U	0.31 U
Chlorobenzene	0.23 U	1.2 U	0.46 U	0.46 U	46 U	0.23 U	0.23 U
Chloroethane	0.13 U	5100	1800	480	64	19	10
Chloroform	0.24 U	1.2 U	0.48 U	0.67	48 U	0.24 U	6.8
Chloromethane	0.59	0.5 U	0.2 U	0.2 U	23	0.1 U	0.1 U
cis-1,2-Dichloroethene	0.27	1 U	3.9	5200	820	230	570
cis-1,3-Dichloropropene	0.22 U	1.1 U	0.44 U	0.44 U	44 U	0.22 U	0.22 U
Cyclohexane	0.93	0.85 U	0.34 U	0.34 U	34 U	0.17 U	0.17 U
Dibromochloromethane	0.43 U	2.2 U	0.86 U	0.86 U	86 U	0.43 U	0.43 U
Dichlorodifluoromethane	0.76	4.1	3	2.4	50 U	1.7	1.9
Ethanol	740	36	25	9.8	110	0.38 U	2.8
Ethyl acetate	0.37 U	0.9 U	0.36 U	0.73 U	73 U	0.18 U	0.18 U

**Table 3.
Summary of Analytical Results - Air Sampling for Large Retail Space
Former Gorham Manufacturing Site
Providence, Rhode Island**

Parameter (ug/m ³)	Post Treatment - Large Retail Space						
	Post carbon-020309 2/3/2009	POST CARBON-021109 2/11/2009	POST CARBON-021809 2/18/2009	POST CARBON-022609 2/26/2009	POST CARBON-041409 4/14/2009	POST CARBON-100809 10/8/2009	Post-Carbon-010810 1/8/2010
Ethylbenzene	10	1.1 U	0.44 U	0.44 U	44 U	0.22 U	0.22 U
Hexachlorobutadiene	1.1 U	5.4 U	2.2 U	2.2 U	220 U	0.53 U	0.53 U
Hexane	3	0.9 U	46	0.36 U	36 U	0.18 U	0.23
Isopropyl alcohol	450	2.9	3.1	47	290	0.25 U	1.4
m,p-Xylene	27	2.2 U	0.86 U	0.86 U	86 U	0.43 U	0.43 U
Methyl methacrylate							
Methylene chloride	20	76	17	3	810	0.7 U	0.72
Methyl-t-butyl ether	0.18 U	0.9 U	0.36 U	0.36 U	36 U	0.18 U	0.18 U
n-Heptane	1.8	1 U	0.4 U	0.4 U	40 U	0.2 U	0.2 U
o-Xylene	9.5	1.1 U	0.44 U	0.44 U	44 U	0.22 U	0.22 U
Propylene (Propene)	0.18 U	98	0.18 U	0.35 U	35 U	0.35 U	0.35 U
Styrene	3.4	1.1 U	0.42 U	0.42 U	42 U	0.21 U	0.21 U
Tetrachloroethene	0.72	1.7 U	1.1	0.68 U	68 U	0.52	1.9
Tetrahydrofuran	6.8	22	40	18	210	4.1	6.5
Toluene	29	0.95 U	0.65	0.38 U	38 U	0.19 U	0.36
trans-1,2-Dichloroethene	0.2 U	1 U	0.4 U	28	40 U	7.7	15
trans-1,3-Dichloropropene	0.22 U	1.1 U	0.44 U	0.44 U	44 U	0.22 U	0.22 U
Trichloroethene	2	11	16	2.7	54 U	1	1.0
Trichlorofluoromethane	0.71	1.4 U	23	6700	84	180	210
Trichlorotrifluoroethane	1.3	1.9 U	0.76 U	0.76 U	76 U	0.38 U	0.51
Vinyl acetate	0.71 U	0.9 U	0.36 U	1.5 U	150 U	0.71 U	0.71 U
Vinyl chloride	0.13 U	30	13	4.5	26 U	0.13 U	0.13 U

**Table 3.
Summary of Analytical Results - Air Sampling for Large Retail Space
Former Gorham Manufacturing Site
Providence, Rhode Island**

Parameter (ug/m ³)	CT IACTIND 2003 (ug/m ³)	Indoor Air - Large Retail Space													
		IA-1 011609 1/16/2009	IA-1 020309 2/3/2009	IA-1 021109 2/11/2009	IA-1 021809 2/18/2009	IA-1 022609 2/26/2009	IA-1 030609 3/6/2009	IA-1 033109 3/31/2009	IA-1 041409 4/14/2009	IA-1 042409 4/24/2009	IA-1 091709 9/17/2009	IA-1 092409 9/24/2009	IA-1 100109 10/1/2009	IA-1 100809 10/8/2009	IA-1 120209 12/2/2009
1,1,1-Trichloroethane	500	10	0.56	1.1	0.99	0.35	1.8	1.5	1.4	2	0.27 U	0.27 U	0.27 U	0.27 U	0.24
1,1,1,2-Tetrachloroethane	0.14	0.34 U	0.34 U	0.34 U	0.34 U	0.34 U	0.34 U	0.34 U	0.24 U	0.34 U	0.34 U	0.34 U	0.34 U	0.34 U	0.24 U
1,1,2-Trichloroethane	12	0.27 U	0.27 U	0.27 U	0.27 U	0.27 U	0.27 U	0.27 U	0.19 U	0.27 U	0.27 U	0.27 U	0.27 U	0.27 U	0.19 U
1,1-Dichloroethane	430	0.71	0.2 U	0.2 U	0.2 U	0.27	0.32	0.2 U	0.14 U	0.2 U	0.2 U	0.2 U	0.2 U	0.2 U	0.14 U
1,1-Dichloroethene	20	0.38	0.2 U	0.2 U	0.2 U	0.2 U	0.2 U	0.2 U	0.14 U	0.2 U	0.2 U	0.2 U	0.2 U	0.2 U	0.14 U
1,2,4-Trichlorobenzene	NA	0.37 U	0.37 U	0.37 U	0.37 U	0.37 U	0.37 U	0.37 U	0.26 U	0.37 U	0.37 U	0.37 U	0.37 U	0.37 U	0.52 U
1,2,4-Trimethylbenzene	52	0.25 U	0.36	0.7	0.77	0.25 U	0.25 U	0.25 U	0.18 U	0.48	0.29	0.35	0.28	0.51	0.52
1,2-Dibromoethane (EDB)	0.038	0.38 U	0.38 U	0.38 U	0.38 U	0.38 U	0.38 U	0.38 U	0.27 U	0.38 U	0.38 U	0.38 U	0.38 U	0.38 U	0.27 U
1,2-Dichlorobenzene	410	0.3 U	0.3 U	0.3 U	0.3 U	0.3 U	0.3 U	0.3 U	0.21 U	0.3 U	0.3 U	0.3 U	0.3 U	0.3 U	0.21 U
1,2-Dichloroethane	0.31	0.2 U	0.2 U	0.2 U	0.2 U	0.2 U	0.2 U	0.2 U	0.14 U	0.2 U	0.2 U	0.2 U	0.2 U	0.2 U	0.14 U
1,2-Dichloropropane	0.42	0.23 U	0.23 U	0.23 U	0.23 U	0.23 U	0.23 U	0.23 U	0.17 U	0.23 U	0.23 U	0.23 U	0.23 U	0.23 U	0.17 U
1,2-Dichlorotetrafluoroethane	NA	0.35 U	0.35 U	0.35 U	0.35 U	0.35 U	0.35 U	0.35 U	0.25 U	0.35 U	0.35 U	0.35 U	0.35 U	0.35 U	0.25 U
1,3,5-Trimethylbenzene	52	0.25 U	0.25 U	0.25 U	0.25 U	0.25 U	0.25 U	0.25 U	0.18 U	0.25 U	0.25 U	0.25 U	0.25 U	0.25 U	0.18
1,3-Butadiene	NA	0.11 U	0.11 U	0.34	0.84	0.11 U	0.11 U	0.11 U	0.08 U	0.11 U	0.23 U	0.23 U	0.23 U	0.23 U	0.17
1,3-Dichlorobenzene	410	0.3 U	0.3 U	0.3 U	0.3 U	0.3 U	0.3 U	0.3 U	0.21 U	0.3 U	0.3 U	0.3 U	0.3 U	0.3 U	0.21 U
1,4-Dichlorobenzene	24	0.3 U	0.3 U	0.3 U	0.3 U	0.3 U	0.3 U	0.3 U	0.21 U	0.3 U	0.3 U	0.3 U	0.3 U	0.3 U	0.21 U
1,4-Dioxane	NA														
2-Butanone	500	20	3.1	5.8	3.4	2.6	2.2	1.3	1.2	4.4	2	2.6	2.7	1.3	2.7
2-Hexanone	NA	0.2 U	0.2 U	0.6	0.42	0.2 U	0.23	0.2 U	0.14 U	0.48	0.43	0.52	0.73	0.31	0.71
4-Ethyltoluene	NA	0.25 U	0.25 U	0.25 U	0.25 U	0.25 U	0.25 U	0.25 U	0.18 U	0.25 U	0.25 U	0.25 U	0.25 U	0.25 U	0.18
4-Methyl-2-pentanone	200	0.2 U	0.2 U	0.43	0.3	0.2 U	0.2 U	0.2 U	0.14 U	0.52	0.21	0.35	0.32	0.2 U	0.34
Acetone	500	18	7.7	19	21	10	8.7	14	12	310	11	18	13	10	13
Benzene	3.3	1	0.68	1.9	3	0.69	0.87	0.71	0.56	0.78	0.49	0.47	0.39	0.48	1.1
Benzyl chloride	NA	0.26 U	0.26 U	0.26 U	0.26 U	0.26 U	0.26 U	0.26 U	0.19 U	0.26 U	0.26 U	0.26 U	0.26 U	0.26 U	0.19 U
Bromodichloromethane	0.46	0.33 U	0.33 U	0.33 U	0.33 U	0.33 U	0.33 U	0.33 U	0.24 U	0.33 U	0.33 U	0.33 U	0.33 U	0.33 U	0.24 U
Bromoform	7.3	0.51 U	0.51 U	0.51 U	0.51 U	0.51 U	0.51 U	0.51 U	0.36 U	0.51 U	0.51 U	0.51 U	0.51 U	0.51 U	0.36 U
Bromomethane	NA	0.19 U	0.19 U	0.19 U	0.19 U	0.19 U	0.19 U	0.19 U	0.14 U	0.19 U	0.19 U	0.19 U	0.19 U	0.19 U	0.14 U
Carbon disulfide	NA	0.16 U	0.16 U	0.16 U	0.16 U	0.16 U	0.16 U	0.16 U	0.12 U	0.16 U	0.16 U	0.16 U	0.16 U	0.16 U	0.12 U
Carbon tetrachloride	0.54	0.35	0.41	0.52	0.55	0.46	0.59	0.53	0.31	0.43	0.48	0.38	0.42	0.43	0.48
Chlorobenzene	200	0.23 U	0.23 U	0.23 U	0.23 U	0.23 U	0.23 U	0.23 U	0.17 U	0.23 U	0.23 U	0.23 U	0.23 U	0.23 U	0.17 U
Chloroethane	500	0.13 U	0.13 U	0.42	0.13 U	0.13 U	0.13 U	0.13 U	0.1 U	0.13 U	0.13 U	0.13 U	0.13 U	0.13 U	0.1 U
Chloroform	0.5	0.24 U	0.24 U	0.24 U	0.24 U	0.24 U	0.24 U	0.24 U	0.17 U	0.24 U	0.24 U	0.24 U	0.24 U	0.24 U	0.17 U
Chloromethane	80	1.1	1	1.4	1.5	1	1	1.2	1.1	1.3	1.1	1.1	0.98	0.95	1.3
cis-1,2-Dichloroethene	100	2	0.2 U	1	1.1	0.73	1.3	0.5	0.6	1.3	0.2 U	0.2 U	0.83	0.44	0.57
cis-1,3-Dichloropropene	2.9	0.22 U	0.22 U	0.22 U	0.22 U	0.22 U	0.22 U	0.22 U	0.16 U	0.22 U	0.22 U	0.22 U	0.22 U	0.22 U	0.16 U
Cyclohexane	NA	0.17 U	0.17 U	0.49	0.61	0.17 U	0.17 U	0.17 U	0.12 U	0.34	0.18 U	0.17 U	0.17 U	0.17 U	0.28
Dibromochloromethane	NA	0.43 U	0.43 U	0.43 U	0.43 U	0.43 U	0.43 U	0.43 U	0.31 U	0.43 U	0.43 U	0.43 U	0.43 U	0.43 U	0.31 U
Dichlorodifluoromethane	500	1.8	2.1	2.6	2.8	2.6	2.6	3.1	2	8.3	2.4	2	2.3	2.1	1.6
Ethanol	NA	5.7	8.3	14	20	9.8	7.5	18	5	39	6.2	7	6.5	8.8	10
Ethyl acetate	NA	0.37 U	0.37 U	0.18 U	0.18 U	0.37 U	0.18 U	0.18 U	0.26 U	0.37 U	0.32	0.18 U	0.18 U	0.18 U	0.13 U

**Table 3.
Summary of Analytical Results - Air Sampling for Large Retail Space
Former Gorham Manufacturing Site
Providence, Rhode Island**

Parameter (ug/m ³)	CT IACTIND 2003 (ug/m ³)	Indoor Air - Large Retail Space													
		IA-1 011609 1/16/2009	IA-1- 020309 2/3/2009	IA-1- 021109 2/11/2009	IA-1- 021809 2/18/2009	IA-1- 022609 2/26/2009	IA-1- 030609 3/6/2009	IA-1- 033109 3/31/2009	IA-1- 041409 4/14/2009	IA-1- 042409 4/24/2009	IA-1- 091709 9/17/2009	IA-1- 092409 9/24/2009	IA-1- 100109 10/1/2009	IA-1- 100809 10/8/2009	IA-1- 120209 12/2/2009
Ethylbenzene	290	0.26	0.28	0.66	0.85	0.23	0.22 U	0.22 U	0.16 U	0.94	0.23	0.23	0.22 U	0.28	0.46
Hexachlorobutadiene	NA	1.1 U	1.1 U	1.1 U	1.1 U	1.1 U	1.1 U	1.1 U	0.75 U	1.1 U	0.53 U	0.53 U	0.53 U	0.53 U	0.75 U
Hexane	NA	0.92	0.74	1.2	1.6	1	0.51	0.53	0.65	1.7	0.99	1.3	0.41	0.77	0.78
Isopropyl alcohol	NA	3.4	3.1	5.3	5.8	3.8	2	9.1	0.18 U	240	5.2	5.2	0.25 U	2.7	1.8
m,p-Xylene	500	0.76	0.87	2.1	2.8	0.8	0.43 U	0.63	0.31 U	2.5	0.79	0.91	0.73	1	1.4
Methyl methacrylate	NA														
Methylene chloride	17	2.3	33	2.3	1.8	4.4	1.1	6.7	3.5	4.8	1.6	3.6	0.7 U	0.7 U	2.9
Methyl-t-butyl ether	190	0.18 U	0.18 U	0.18 U	0.18 U	0.18 U	0.18 U	0.18 U	0.13 U	0.18 U	0.18 U	0.18 U	0.18 U	0.18 U	0.13 U
n-Heptane	NA	0.23	0.2 U	0.59	0.75	0.2 U	0.2 U	0.2 U	0.14 U	0.67	0.2 U	0.2 U	0.2 U	0.26	0.42
o-Xylene	500	0.26	0.33	0.76	0.99	0.3	0.22 U	0.22 U	0.16 U	0.7	0.31	0.4	0.28	0.4	0.52
Propylene (Propene)	NA	0.18 U	0.18 U	0.09 U	0.09 U	0.18 U	0.09 U	0.09 U	0.13 U	0.18 U	0.35 U	0.35 U	0.18 U	0.35 U	0.25 U
Styrene	290	0.21 U	0.21 U	0.21	0.28	0.21 U	0.21 U	0.21 U	0.15 U	0.24	0.21 U	0.21 U	0.21 U	0.21 U	0.19
Tetrachloroethene	5	6.6	0.57	4.2	3.2	2.6	4.9	1.5	1.9	6.1	0.34 U	0.34 U	2	1.1	3.2
Tetrahydrofuran	NA	12	1.2	1.3	0.48	0.32	0.15 U	0.15 U	0.23	0.4	0.15 U	0.15 U	0.15 U	0.15 U	0.11 U
Toluene	500	1.7	1.4	4	5.7	2.3	0.93	1.7	0.72	5.7	1.3	1.1	0.78	1.2	2.8
trans-1,2-Dichloroethene	200	0.2 U	0.2 U	0.2 U	0.2 U	0.2 U	0.2 U	0.2 U	0.14 U	0.2 U	0.2 U	0.2 U	0.2 U	0.2 U	0.14 U
trans-1,3-Dichloropropene	2.9	0.22 U	0.22 U	0.22 U	0.22 U	0.22 U	0.22 U	0.22 U	0.16 U	0.22 U	0.22 U	0.22 U	0.22 U	0.22 U	0.16 U
Trichloroethene	1	4.2	0.46	1.6	1.4	0.65	1.5	0.57	0.74	1.6	0.27 U	0.27 U	1.1	0.56	0.69
Trichlorofluoromethane	500	2.1	1.4	1.7	3.1	1.6	1.7	1.2	1.2	1.5	1.4	1.3	1.2	1.2	1.3
Trichlorotrifluoroethane	NA	0.65	0.64	0.47	0.46	0.67	0.48	0.59	0.54	1.7	0.48	0.44	0.45	0.51	0.52
Vinyl acetate	NA	0.71 U	0.71 U	0.18 U	0.18 U	0.71 U	0.18 U	0.18 U	0.5 U	0.71 U	0.71 U	0.71 U	0.71 U	0.71 U	0.25 U
Vinyl chloride	1.9	0.26	0.13 U	0.22	0.21	0.13 U	0.19	0.13 U	0.1 U	0.16	0.13 U	0.13 U	0.17	0.13 U	0.1 U

**Table 3.
Summary of Analytical Results - Air Sampling for Large Retail Space
Former Gorham Manufacturing Site
Providence, Rhode Island**

Parameter (ug/m ³)	Indoor Air - Large Retail Space																	
	IA-1-010810 1/8/2010	IA-1-012810 1/28/2010	IA-1-020510 2/5/2010	IA-1-021210 2/12/2010	IA-1-021910 2/19/2010	IA-1-032610 3/26/2010	IA-1-043010 4/30/2010	IA-1-052810 5/28/2010	IA-1-070110 7/1/2010	IA-1-091610 9/16/2010	IA-1-120710 12/7/2010	IA-1-021711 2/17/2011	IA-1-060211 6/2/2011	IA-1-091511 9/15/2011	IA-1-120811 12/8/2011	IA-1-030812 3/8/2012	IA-2-011609 1/16/2009	IA-2-020309 2/3/2009
1,1,1-Trichloroethane	0.27 U	0.27 U	0.76	0.30	0.88	0.27 U	1.2	0.33	0.27 U	0.27 U	0.27 U	0.27 U	0.27 U	0.27 U	0.12	0.082 U	9.9	0.63
1,1,2,2-Tetrachloroethane	0.34 U	0.34 U	0.34 U	0.34 U	0.34 U	0.34 U	0.34 U	0.34 U	0.34 U	0.34 U	0.34 U	0.34 U	0.34 U	0.34 U	0.21 U	0.1 U	0.34 U	0.34 U
1,1,2-Trichloroethane	0.27 U	0.27 U	0.27 U	0.27 U	0.27 U	0.27 U	0.27 U	0.27 U	0.27 U	0.27 U	0.27 U	0.27 U	0.27 U	0.27 U	0.16 U	0.082 U	0.27 U	0.27 U
1,1-Dichloroethane	0.2 U	0.2 U	0.2 U	0.2 U	0.2 U	0.2 U	0.2 U	0.2 U	0.2 U	0.2 U	0.2 U	0.2 U	0.2 U	0.20 U	0.12 U	0.061 U	0.72	0.2 U
1,1-Dichloroethene	0.2 U	0.2 U	0.2 U	0.2 U	0.2 U	0.2 U	0.2 U	0.2 U	0.2 U	0.2 U	0.2 U	0.2 U	0.2 U	0.20 U	0.12 U	0.059 U	0.41	0.2 U
1,2,4-Trichlorobenzene	0.37 U	0.37 U	0.37 U	0.37 U	0.37 U	0.75 U	0.37 U	0.37 U	0.37 U	0.37 U	0.37 U	0.37 U	0.37 U	0.74 U	0.45 U	0.45 U	0.37 U	0.37 U
1,2,4-Trimethylbenzene	0.37	0.25 U	0.26	0.25 U	0.25 U	0.25 U	0.25 U	0.4	0.43	0.56	0.25 U	0.55	0.25 U	0.25 U	0.1	0.15 U	0.25 U	0.37
1,2-Dibromoethane (EDB)	0.38 U	0.38 U	0.38 U	0.38 U	0.38 U	0.38 U	0.38 U	0.38 U	0.38 U	0.38 U	0.38 U	0.38 U	0.38 U	0.38 U	0.23 U	0.12 U	0.38 U	0.38 U
1,2-Dichlorobenzene	0.3 U	0.3 U	0.3 U	0.3 U	0.3 U	0.3 U	0.3 U	0.3 U	0.3 U	0.3 U	0.3 U	0.3 U	0.3 U	0.30 U	0.18 U	0.18 U	0.3 U	0.3 U
1,2-Dichloroethane	0.2 U	0.2 U	0.2 U	0.2 U	0.2 U	0.2 U	0.2 U	0.2 U	0.2 U	0.2 U	0.2 U	0.2 U	0.2 U	0.20 U	0.056	0.061 U	0.2 U	0.2 U
1,2-Dichloropropane	0.23 U	0.23 U	0.23 U	0.23 U	0.23 U	0.23 U	0.23 U	0.23 U	0.23 U	0.23 U	0.23 U	0.23 U	0.23 U	0.23 U	0.14 U	0.069 U	0.23 U	0.23 U
1,2-Dichlorotetrafluoroethane	0.35 U	0.35 U	0.35 U	0.35 U	0.35 U	0.35 U	0.35 U	0.35 U	0.35 U	0.35 U	0.35 U	0.35 U	0.35 U	0.35 U	0.35 U	0.35 U	0.35 U	0.35 U
1,3,5-Trimethylbenzene	0.25 U	0.25 U	0.25 U	0.25 U	0.25 U	0.25 U	0.25 U	0.25 U	0.25 U	0.25 U	0.25 U	0.25 U	0.25 U	0.25 U	0.044	0.15 U	0.25 U	0.25 U
1,3-Butadiene	0.23 U	0.23 U	0.23 U	0.23 U	0.23 U	0.11 U	0.23 U	0.11 U	0.11 U	0.11 U	0.11 U	0.11 U	0.11 U	0.11 U	0.066 U	0.066 U	0.11 U	0.11 U
1,3-Dichlorobenzene	0.3 U	0.3 U	0.3 U	0.3 U	0.3 U	0.3 U	0.3 U	0.3 U	0.3 U	0.3 U	0.3 U	0.3 U	0.3 U	0.30 U	0.18 U	0.18 U	0.3 U	0.3 U
1,4-Dichlorobenzene	0.3 U	0.3 U	0.3 U	0.3 U	0.3 U	0.3 U	0.3 U	0.3 U	0.3 U	0.3 U	0.3 U	0.3 U	0.3 U	0.30 U	0.18 U	0.18 U	0.3 U	0.3 U
1,4-Dioxane														0.18 U				
2-Butanone	1.6	0.3 U	2.4	1.1	1.2	1.3	0.78	2.6	3.3	0.85	0.68	1.7 B	2.9 U	5.9 U	1.8	1.2	21	4.1
2-Hexanone	0.36	0.2 U	0.47	0.2 U	0.27	0.27	0.2 U	0.67	0.75	0.2 U	0.2 U	0.2 U	4.1 U	0.62	0.22	0.26	0.2 U	0.2 U
4-Ethyltoluene	0.25 U	0.25 U	0.25 U	0.25 U	0.25 U	0.25 U	0.25 U	0.25 U	0.25 U	0.25 U	0.25 U	0.25 U	0.25 U	0.25 U	0.15 U	0.15 U	0.25 U	0.25 U
4-Methyl-2-pentanone	0.2 U	0.2 U	0.2 U	0.22	0.2 U	0.2 U	0.2 U	0.28	0.35	0.35	0.2 U	0.2 U	0.2 U	0.23	0.39	0.13	0.2 U	0.2 U
Acetone	12	2.0	19	7.3	8.5	7	6.5	18	18	11	12 B	15 B	11 B	18	8	6	17	9.6
Benzene	1.2	0.16 U	0.98	0.64	0.53	0.59	0.64	0.5	0.46	0.8	0.49	1.5	0.25	0.32	0.47	0.34	1	0.67
Benzyl chloride	0.26 U	0.26 U	0.26 U	0.26 U	0.26 U	0.26 U	0.26 U	0.26 U	0.26 U	0.26 U	0.26 U	0.26 U	0.26 U	0.26 U	0.16 U	0.16 U	0.26 U	0.26 U
Bromodichloromethane	0.33 U	0.33 U	0.33 U	0.33 U	0.33 U	0.33 U	0.33 U	0.33 U	0.33 U	0.33 U	0.34 U	0.34 U	0.34 U	0.34 U	0.2 U	0.1 U	0.33 U	0.33 U
Bromoform	0.51 U	0.51 U	0.51 U	0.51 U	0.51 U	0.51 U	0.51 U	0.51 U	0.51 U	0.51 U	0.52 U	0.52 U	0.52 U	0.52 U	0.31 U	0.31 U	0.51 U	0.51 U
Bromomethane	0.19 U	0.19 U	0.19 U	0.19 U	0.19 U	0.19 U	0.19 U	0.19 U	0.19 U	0.19 U	0.19 U	0.19 U	0.19 U	0.19 U	0.12 U	0.12 U	0.19 U	0.19 U
Carbon disulfide	0.16 U	0.16 U	0.16 U	0.16 U	0.33	0.16 U	0.16 U	0.16 U	0.16 U	0.16 U	0.16 U	0.16 U	0.16 U	1.6 U	0.93 U	0.93 U	0.16 U	0.16 U
Carbon tetrachloride	0.43	0.31 U	0.40	0.31 U	0.45	0.44	0.48	0.55	0.52	0.5	0.46	0.47	0.53	0.57	0.49	0.46	0.33	0.41
Chlorobenzene	0.23 U	0.23 U	0.23 U	0.23 U	0.23 U	0.23 U	0.23 U	0.23 U	0.23 U	0.23 U	0.23 U	0.23 U	0.23 U	0.23 U	0.14 U	0.14 U	0.23 U	0.23 U
Chloroethane	0.13 U	0.13 U	0.13 U	0.13 U	0.13 U	0.13 U	0.13 U	0.13 U	0.13 U	0.13 U	0.13 U	0.13 U	0.13 U	0.13 U	0.079 U	0.079 U	0.13 U	0.13 U
Chloroform	0.26	0.24 U	0.47	0.43	0.24 U	0.24 U	0.25	0.24 U	0.24 U	3.8	0.24 U	0.24 U	0.24 U	0.24 U	0.085	0.073 U	0.24 U	0.24 U
Chloromethane	1.1	1.4	1.3	1.3	1.2	1.3	0.79	1.2	1.2	1.1	0.97	1	0.92	1.3	0.93	1.3	1.1	1
cis-1,2-Dichloroethene	0.2 U	0.2 U	0.2 U	0.2 U	0.56	0.2 U	1.3	0.2 U	0.5	0.2 U	1.7	0.2 U	0.2 U	0.20 U	0.15	0.059 U	2.1	0.24
cis-1,3-Dichloropropene	0.22 U	0.22 U	0.22 U	0.22 U	0.22 U	0.22 U	0.22 U	0.22 U	0.22 U	0.22 U	0.23 U	0.23 U	0.23 U	0.23 U	0.14 U	0.068 U	0.22 U	0.22 U
Cyclohexane	0.17 U	0.17 U	0.17 U	0.17 U	0.17 U	0.17 U	0.17 U	0.17 U	0.17 U	0.22	0.17 U	0.17 U	0.17 U	0.17 U	0.1 U	0.1 U	0.17 U	0.17 U
Dibromochloromethane	0.43 U	0.43 U	0.43 U	0.43 U	0.43 U	0.43 U	0.43 U	0.43 U	0.43 U	0.43 U	0.43 U	0.43 U	0.43 U	0.43 U	0.26 U	0.13 U	0.43 U	0.43 U
Dichlorodifluoromethane	3.1	2.4	2.4	2.6	3.0	1.6	2.2	2.3	2.7	1.7	2	3.1	1.5	2	2.6	2.1	1.8	2.2
Ethanol	8.4	7.0	29	19	43	4.6	4.4	6	6.5	9	2.7	9	2.8	6.4	2.2	3.2	5.5	8.8
Ethyl acetate	0.18 U	0.18 U	0.18 U	0.18 U	0.18 U	0.18 U	0.18 U	0.18 U	0.18 U	0.18 U	0.18 U	0.18 U	0.18 U	0.18 U	0.11 U	0.92	0.37 U	0.37 U

**Table 3.
Summary of Analytical Results - Air Sampling for Large Retail Space
Former Gorham Manufacturing Site
Providence, Rhode Island**

Parameter (ug/m ³)	Indoor Air - Large Retail Space																	
	IA-1-010810 1/8/2010	IA-1-012810 1/28/2010	IA-1-020510 2/5/2010	IA-1-021210 2/12/2010	IA-1-021910 2/19/2010	IA-1-032610 3/26/2010	IA-1-043010 4/30/2010	IA-1-052810 5/28/2010	IA-1-070110 7/1/2010	IA-1-091610 9/16/2010	IA-1-120710 12/7/2010	IA-1-021711 2/17/2011	IA-1-060211 6/2/2011	IA-1-091511 9/15/2011	IA-1-120811 12/8/2011	IA-1-030812 3/8/2012	IA-2-011609 1/16/2009	IA-2-020309 2/3/2009
Ethylbenzene	0.40	0.22 U	0.32	0.22 U	0.22 U	0.22 U	0.23	0.29	0.27	0.51	0.22 U	0.54	0.22 U	0.22 U	0.14	0.1	0.26	0.28
Hexachlorobutadiene	0.53 U	0.53 U	0.53 U	0.53 U	0.53 U	1.1 U	0.53 U	0.53 U	0.53 U	0.53 U	0.53 U	0.53 U	0.53 U	0.53 U	0.32 U	0.32 U	1.1 U	1.1 U
Hexane	0.74	0.18 U	0.82	1.3	0.45	0.2	1.1	0.8	0.46	0.61	0.35 U	1.9	0.43	7.0 U	0.39	0.72	0.88	0.57
Isopropyl alcohol	2.4	0.25 U	9.4	0.25 U	1.6	0.65	3.4	0.12 U	0.74	1.4	0.25 U	1.7	1.2 U	4.9 U	2.9 U	0.64	3.7	3.1
m,p-Xylene	1.1	0.43 U	1.0	0.43 U	0.43 U	0.5	0.77	1.1	1.2	1.7	0.43 U	1.6	0.42 J	0.51	0.41	0.22	0.76	0.88
Methyl methacrylate											0.2 U	0.2 U	0.2 U	0.2 U	0.12 U	0.12 U		
Methylene chloride	0.7 U	1.4	1.5	1.9	0.7 U	0.7 U	0.7 U	0.35 U	1.2	0.56	0.56	4.8	1.3	1.7 U	1.6	3.3	2	30
Methyl-t-butyl ether	0.18 U	0.18 U	0.18 U	0.18 U	0.18 U	0.18 U	0.18 U	0.18 U	0.18 U	0.18 U	0.18 U	0.18 U	0.18 U	0.18 U	0.11 U	0.11 U	0.18 U	0.18 U
n-Heptane	0.35	0.2 U	0.2 U	0.2 U	0.2 U	0.2 U	0.2 U	0.2 U	0.2 U	0.36	0.2 U	0.5	0.2 U	0.20 U	0.079	0.12 U	0.23	0.2 U
o-Xylene	0.44	0.22 U	0.38	0.22 U	0.22 U	0.22 U	0.28	0.46	0.51	0.69	0.22 U	0.56	0.22 U	0.22 U	0.15	0.096	0.3	0.34
Propylene (Propene)	0.35 U	0.35 U	0.35 U	0.35 U	0.35 U	0.35 U	0.35 U	0.87 U	0.87 U	0.35 U	0.86 U	0.86 U	0.86 U	3.4 U	2.1 U	2.1 U	0.18 U	0.18 U
Styrene	0.21 U	0.21 U	0.21 U	0.21 U	0.21 U	0.21 U	0.21 U	0.25	0.31	0.24	0.21 U	0.21 U	0.21 U	0.21 U	0.85	0.13 U	0.21 U	0.21 U
Tetrachloroethene	0.34 U	0.34 U	0.34 U	0.34 U	1.2	0.34 U	4.5	0.55	1.1	0.34 U	3.3	5.6 [a]	0.34 U	0.47	0.84	0.21	7.5	0.64
Tetrahydrofuran	0.15 U	0.15 U	0.15 U	0.15 U	0.22	0.15 U	0.15 U	0.15 U	0.24	0.16	0.15 U	0.15 U	0.15 U	0.15 U	0.14	0.088 U	12	1.2
Toluene	2.1	0.19 U	0.82	0.69	0.58	0.8	1.3	0.91	0.99	2.5	0.44	3	0.58	0.93	1.6	0.3	1.7	1.3
trans-1,2-Dichloroethene	0.2 U	0.2 U	0.2 U	0.2 U	0.2 U	0.2 U	0.2 U	0.2 U	0.2 U	0.2 U	0.2 U	0.2 U	0.2 U	0.20 U	0.12 U	0.059 U	0.2 U	0.2 U
trans-1,3-Dichloropropene	0.22 U	0.22 U	0.22 U	0.22 U	0.22 U	0.22 U	0.22 U	0.22 U	0.22 U	0.22 U	0.23 U	0.23 U	0.23 U	0.23 U	0.14 U	0.068 U	0.22 U	0.22 U
Trichloroethene	0.27 U	0.27 U	0.27 U	0.31	0.39	0.27 U	1.5	0.27 U	0.4	0.27 U	1.7	0.27 U	0.27 U	0.27 U	0.25	0.081 U	4.4	0.56
Trichlorofluoromethane	2.5	0.81	1.3	1.5	1.5	1.4	1.2	1.3	1.4	2.7	1.2	1.7	1.1	1.8	1	0.89	2	1.2
Trichlorotrifluoroethane	0.63	0.38 U	0.71	0.63	0.55	0.55	0.48	0.59	0.53	0.48	0.57	0.64	0.67	0.59	0.69	0.4	0.69	0.58
Vinyl acetate	0.71 U	0.71 U	0.71 U	0.71 U	0.71 U	0.36 U	0.71 U	0.18 U	0.18 U	0.36 U	0.35 U	0.18 U	3.5 U	0.18 U	0.11 U	0.21 U	0.71 U	0.71 U
Vinyl chloride	0.13 U	0.13 U	0.13 U	0.13 U	0.13 U	0.13 U	0.13 U	0.13 U	0.13 U	0.13 U	0.14	0.13 U	0.13 U	0.13 U	0.077 U	0.038 U	0.27	0.13 U

**Table 3.
Summary of Analytical Results - Air Sampling for Large Retail Space
Former Gorham Manufacturing Site
Providence, Rhode Island**

Parameter (ug/m ³)	Indoor Air - Large Retail Space														
	IA-2-021109 2/11/2009	IA-2-021809 2/18/2009	IA-2-022609 2/26/2009	IA-2-041409 4/14/2009	IA-2-042409 4/24/2009	IA-2-091709 9/17/2009	IA-2-092409 9/24/2009	IA-2-100109 10/1/2009	IA-2-100809 10/8/2009	IA-2-012810 1/28/2010	IA-2-020510 2/5/2010	IA-2-021210 2/12/2010	IA-2-021910 2/19/2010	IA-2-032610 3/26/2010	IA-2-043010 4/30/2010
1,1,1-Trichloroethane	1.1	1.1	0.44	1.4	2.1	0.27 U	0.27 U	0.27 U	0.27 U	0.44	0.73	0.27 U	0.27 U	0.27 U	1
1,1,2,2-Tetrachloroethane	0.34 U	0.34 U	0.34 U	0.24 U	0.34 U	0.34 U	0.34 U	0.34 U	0.34 U	0.34 U	0.34 U	0.34 U	0.34 U	0.34 U	0.34 U
1,1,2-Trichloroethane	0.27 U	0.27 U	0.27 U	0.19 U	0.27 U	0.27 U	0.27 U	0.27 U	0.27 U	0.27 U	0.27 U	0.27 U	0.27 U	0.27 U	0.27 U
1,1-Dichloroethane	0.2 U	0.2 U	0.32	0.14 U	0.2 U	0.2 U	0.2 U	0.2 U	0.2 U	0.2 U	0.2 U	0.2 U	0.2 U	0.2 U	0.2 U
1,1-Dichloroethene	0.2 U	0.2 U	0.2 U	0.14 U	0.2 U	0.2 U	0.2 U	0.2 U	0.2 U	0.2 U	0.2 U	0.2 U	0.2 U	0.2 U	0.2 U
1,2,4-Trichlorobenzene	0.37 U	0.37 U	0.37 U	0.26 U	0.37 U	0.37 U	0.37 U	0.37 U	0.37 U	0.37 U	0.37 U	0.37 U	0.37 U	0.75 U	0.37 U
1,2,4-Trimethylbenzene	0.7	0.65	0.3	0.18 U	0.25 U	0.29	0.39	0.27	0.52	0.55	0.25 U	0.25 U	0.25 U	0.25 U	0.31
1,2-Dibromoethane (EDB)	0.38 U	0.38 U	0.38 U	0.27 U	0.38 U	0.38 U	0.38 U	0.38 U	0.38 U	0.38 U	0.38 U	0.38 U	0.38 U	0.38 U	0.38 U
1,2-Dichlorobenzene	0.3 U	0.3 U	0.3 U	0.21 U	0.3 U	0.3 U	0.3 U	0.3 U	0.3 U	0.3 U	0.3 U	0.3 U	0.3 U	0.3 U	0.3 U
1,2-Dichloroethane	0.2 U	0.2 U	0.2 U	0.14 U	0.2 U	0.2 U	0.2 U	0.2 U	0.2 U	0.2 U	0.2 U	0.2 U	0.2 U	0.2 U	0.2 U
1,2-Dichloropropane	0.23 U	0.23 U	0.23 U	0.17 U	0.23 U	0.23 U	0.23 U	0.23 U	0.23 U	0.23 U	0.23 U	0.23 U	0.23 U	0.23 U	0.23 U
1,2-Dichlorotetrafluoroethane	0.35 U	0.35 U	0.35 U	0.25 U	0.35 U	0.35 U	0.35 U	0.35 U	0.35 U	0.35 U	0.35 U	0.35 U	0.35 U	0.35 U	0.35 U
1,3,5-Trimethylbenzene	0.25	0.25 U	0.25 U	0.18 U	0.25 U	0.25 U	0.25 U	0.25 U	0.25 U	0.59	0.25 U	0.25 U	0.25 U	0.25 U	0.25 U
1,3-Butadiene	0.3	0.66	0.11 U	0.08 U	0.11 U	0.23 U	0.23 U	0.23 U	0.23 U	0.23 U	0.23 U	0.23 U	0.23 U	0.11 U	0.23 U
1,3-Dichlorobenzene	0.3 U	0.3 U	0.3 U	0.21 U	0.3 U	0.3 U	0.3 U	0.3 U	0.3 U	0.3 U	0.3 U	0.3 U	0.3 U	0.3 U	0.3 U
1,4-Dichlorobenzene	0.3 U	0.3 U	0.3 U	0.21 U	0.3 U	0.3 U	0.3 U	0.3 U	0.3 U	0.34	0.3 U	0.3 U	0.3 U	0.3 U	0.3 U
1,4-Dioxane															
2-Butanone	4.6	3	2.9	0.95	1.6	1.1	2.3	0.81	1	2.1	0.70	0.44	0.3 U	0.96	1.3
2-Hexanone	0.35	0.26	0.2 U	0.14 U	0.2 U	0.25	0.54	0.2 U	0.26	0.51	0.2 U	0.2 U	0.2 U	0.2 U	0.26
4-Ethyltoluene	0.25 U	0.25 U	0.25 U	0.18 U	0.25 U	0.25 U	0.25 U	0.25 U	0.25 U	0.25 U	0.25 U	0.25 U	0.25 U	0.25 U	0.25 U
4-Methyl-2-pentanone	0.35	0.2 U	0.2 U	0.14 U	0.2 U	0.2 U	0.39	0.2 U	0.2 U	0.2 U	0.2 U	0.2 U	0.2 U	0.2 U	0.2 U
Acetone	14	18	9.7	13	39	6.2	17	11	8.8	17	7.8	3.1	0.48 U	6.3	8.2
Benzene	1.8	3	0.77	0.58	0.44	0.41	0.47	0.39	0.54	1.2	0.86	0.67	0.16 U	0.58	0.63
Benzyl chloride	0.26 U	0.26 U	0.26 U	0.19 U	0.26 U	0.26 U	0.26 U	0.26 U	0.26 U	0.26 U	0.26 U	0.26 U	0.26 U	0.26 U	0.26 U
Bromodichloromethane	0.33 U	0.33 U	0.33 U	0.24 U	0.33 U	0.33 U	0.33 U	0.33 U	0.33 U	0.33 U	0.33 U	0.33 U	0.33 U	0.33 U	0.33 U
Bromoform	0.51 U	0.51 U	0.51 U	0.36 U	0.51 U	0.51 U	0.51 U	0.51 U	0.51 U	0.51 U	0.51 U	0.51 U	0.51 U	0.51 U	0.51 U
Bromomethane	0.19 U	0.19 U	0.19 U	0.14 U	0.19 U	0.19 U	0.19 U	0.19 U	0.19 U	0.19 U	0.19 U	0.19 U	0.19 U	0.19 U	0.19 U
Carbon disulfide	0.16 U	0.16 U	0.16 U	0.12 U	0.16 U	0.16 U	0.16 U	0.16 U	0.16 U	0.16 U	0.16 U	0.16 U	0.16 U	0.16 U	0.16 U
Carbon tetrachloride	0.55	0.57	0.48	0.41	0.41	0.44	0.4	0.46	0.42	0.31 U	0.40	0.31 U	0.31 U	0.43	0.47
Chlorobenzene	0.23 U	0.23 U	0.23 U	0.17 U	0.23 U	0.23 U	0.23 U	0.23 U	0.23 U	0.23 U	0.23 U	0.23 U	0.23 U	0.23 U	0.23 U
Chloroethane	0.42	0.13 U	0.13 U	0.1 U	0.13 U	0.13 U	0.13 U	0.13 U	0.13 U	0.13 U	0.13 U	0.13 U	0.13 U	0.13 U	0.13 U
Chloroform	0.24 U	0.24 U	0.25	0.17 U	0.24 U	0.24 U	0.24 U	0.24 U	0.24 U	0.24 U	0.47	0.40	0.24 U	0.24 U	0.24 U
Chloromethane	1.3	1.3	1	1.1	1.2	0.91	1.1	0.96	0.98	1.2	1.3	1.3	1.4	1.3	0.8
cis-1,2-Dichloroethene	1.1	1.1	0.95	0.59	1.6	0.2 U	0.2 U	0.79	0.48	0.58	0.2 U	0.2 U	0.2 U	0.2 U	1
cis-1,3-Dichloropropene	0.22 U	0.22 U	0.22 U	0.16 U	0.22 U	0.22 U	0.22 U	0.22 U	0.22 U	0.22 U	0.22 U	0.22 U	0.22 U	0.22 U	0.22 U
Cyclohexane	0.44	0.61	0.17 U	0.12 U	0.22	0.17 U	0.17 U	0.17 U	0.17 U	0.17 U	0.17 U	0.17 U	0.17 U	0.17 U	0.17 U
Dibromochloromethane	0.43 U	0.43 U	0.43 U	0.31 U	0.43 U	0.43 U	0.43 U	0.43 U	0.43 U	0.43 U	0.43 U	0.43 U	0.43 U	0.43 U	0.43 U
Dichlorodifluoromethane	2.6	2.9	2.7	2.1	2.9	2	2.1	2.3	2.1	2.2	2.5	2.6	3.0	1.6	2.0
Ethanol	12	17	7.9	4.9	7.5	4.8	6.7	7.8	6.2	14	35	17	20	4.4	4.9
Ethyl acetate	0.18 U	0.18 U	0.37 U	0.26 U	0.37 U	0.18 U	0.18 U	0.18 U	0.18 U	0.18 U	0.18 U	0.18 U	0.18 U	0.18 U	0.18 U

**Table 3.
Summary of Analytical Results - Air Sampling for Large Retail Space
Former Gorham Manufacturing Site
Providence, Rhode Island**

Parameter (ug/m ³)	Indoor Air - Large Retail Space														
	IA-2-021109 2/11/2009	IA-2-021809 2/18/2009	IA-2-022609 2/26/2009	IA-2-041409 4/14/2009	IA-2-042409 4/24/2009	IA-2-091709 9/17/2009	IA-2-092409 9/24/2009	IA-2-100109 10/1/2009	IA-2-100809 10/8/2009	IA-2-012810 1/28/2010	IA-2-020510 2/5/2010	IA-2-021210 2/12/2010	IA-2-021910 2/19/2010	IA-2-032610 3/26/2010	IA-2-043010 4/30/2010
Ethylbenzene	0.65	0.79	0.3	0.18	0.22 U	0.22 U	0.22	0.22 U	0.31	0.42	0.34	0.22 U	0.22 U	0.22 U	0.23
Hexachlorobutadiene	1.1 U	1.1 U	1.1 U	0.75 U	1.1 U	0.53 U	0.53 U	0.53 U	0.53 U	0.53 U	0.53 U	0.53 U	0.53 U	1.1 U	0.53 U
Hexane	1.3	1.6	0.69	0.72	0.74	0.41	0.42	0.71	1	0.61	0.64	1.4	0.18 U	0.27	1.6
Isopropyl alcohol	4.5	4.5	4.7	5.6	28	340	5.7	3.3	0.25 U	0.25 U	3.6	0.25 U	0.25 U	0.63	3.2
m,p-Xylene	2	2.6	0.93	0.61	0.63	0.71	0.93	0.78	1.1	1.3	1.1	0.43 U	0.43 U	0.47	0.75
Methyl methacrylate															
Methylene chloride	4	1.6	1.8	4	4.2	0.7 U	0.7 U	0.7 U	0.7 U	1.4	0.90	1.9	0.7 U	0.7 U	0.7 U
Methyl-t-butyl ether	0.18 U	0.18 U	0.18 U	0.13 U	0.18 U	0.18 U	0.18 U	0.18 U	0.18 U	0.18 U	0.18 U	0.18 U	0.18 U	0.18 U	0.18 U
n-Heptane	0.58	0.73	0.22	0.15	0.2 U	0.2 U	0.2 U	0.2 U	0.34	0.83	0.2 U	0.2 U	0.2 U	0.2 U	0.2 U
o-Xylene	0.76	0.89	0.34	0.22	0.22	0.27	0.42	0.3	0.44	0.46	0.40	0.22 U	0.22 U	0.22 U	0.29
Propylene (Propene)	0.09 U	0.09 U	0.18 U	0.13 U	0.18 U	0.35 U	0.35 U	0.18 U	0.35 U	0.35 U	0.35 U	0.35 U	0.35 U	0.35 U	0.35 U
Styrene	0.21 U	0.23	0.21 U	0.15 U	0.21 U	0.21 U	0.21 U	0.21 U	0.21 U	0.41	0.21 U	0.21 U	0.21 U	0.21 U	0.21 U
Tetrachloroethene	4.2	3.2	3.3	2.2	7.6	0.34 U	0.35	1.7	1	2.3	0.34 U	0.34 U	0.34 U	0.34 U	3.6
Tetrahydrofuran	1.2	0.49	0.41	0.21	0.28	0.15 U	0.15 U	0.15 U	0.15 U	1.6	0.15 U	0.15 U	0.15 U	0.15 U	0.15 U
Toluene	4	5.5	2.3	1	1.2	1.1	1.1	1.2	1.5	2.4	0.93	0.64	0.19 U	0.8	1.3
trans-1,2-Dichloroethene	0.2 U	0.2 U	0.2 U	0.14 U	0.2 U	0.2 U	0.2 U	0.2 U	0.2 U	0.2 U	0.2 U	0.2 U	0.2 U	0.2 U	0.2 U
trans-1,3-Dichloropropene	0.22 U	0.22 U	0.22 U	0.16 U	0.22 U	0.22 U	0.22 U	0.22 U	0.22 U	0.22 U	0.22 U	0.22 U	0.22 U	0.22 U	0.22 U
Trichloroethene	1.6	1.4	0.91	0.77	1.9	0.27 U	0.27 U	0.99	0.57	0.79	0.27 U	0.27 U	0.27 U	0.27 U	1.2
Trichlorofluoromethane	1.7	2.8	1.6	1.3	1.3	1.2	1.2	1.2	1.2	1.2	1.3	1.4	1.1	1.4	1.3
Trichlorotrifluoroethane	0.49	0.46	0.64	0.56	0.74	0.5	0.47	0.46	0.54	0.46	0.53	0.61	0.38 U	0.51	0.44
Vinyl acetate	0.18 U	0.18 U	0.71 U	0.5 U	0.71 U	0.71 U	0.71 U	0.71 U	0.71 U	0.71 U	0.71 U	0.71 U	0.71 U	0.36 U	0.71 U
Vinyl chloride	0.18	0.2	0.13 U	0.1 U	0.18	0.13 U	0.13 U	0.16	0.13 U	0.13 U	0.13 U	0.13 U	0.13 U	0.13 U	0.13 U

**Table 3.
Summary of Analytical Results - Air Sampling for Large Retail Space
Former Gorham Manufacturing Site
Providence, Rhode Island**

Parameter (ug/m ³)	Indoor Air - Large Retail Space																	
	IA-2-091610 9/16/2010	IA-2-070110 7/1/2010	IA-2-091610 9/16/2010	IA-2-120710 12/7/2010	IA-2-021711 2/17/2011	IA-2-060211 6/2/2011	IA-2-091511 9/15/2011	IA-2-120811 12/8/2011	IA-2-030812 3/8/2012	IA-3-011609 1/16/2009	IA-3-020309 2/3/2009	IA-3-021109 2/11/2009	IA-3-021809 2/18/2009	IA-3-022609 2/26/2009	IA-3-041409 4/14/2009	IA-3-042409 4/24/2009	IA-3-091709 9/17/2009	IA-3-092409 9/24/2009
1,1,1-Trichloroethane	0.27 U	0.28	0.27 U	0.27 U	0.27 U	0.27 U	0.27 U	0.13	0.082 U	9.8	0.57	1.1	1.1	0.28	1.5	2.2	0.27 U	0.27 U
1,1,2,2-Tetrachloroethane	0.34 U	0.34 U	0.34 U	0.34 U	0.34 U	0.34 U	0.34 U	0.21 U	0.1 U	0.34 U	0.34 U	0.34 U	0.34 U	0.34 U	0.24 U	0.34 U	0.34 U	0.34 U
1,1,2-Trichloroethane	0.27 U	0.27 U	0.27 U	0.27 U	0.27 U	0.27 U	0.27 U	0.16 U	0.082 U	0.27 U	0.27 U	0.27 U	0.27 U	0.27 U	0.19 U	0.27 U	0.27 U	0.27 U
1,1-Dichloroethane	0.2 U	0.2 U	0.2 U	0.2 U	0.2 U	0.2 U	0.20 U	0.12 U	0.061 U	0.68	0.2 U	0.2 U	0.2 U	0.2 U	0.14 U	0.2 U	0.2 U	0.2 U
1,1-Dichloroethene	0.2 U	0.2 U	0.2 U	0.2 U	0.2 U	0.2 U	0.20 U	0.12 U	0.059 U	0.35	0.2 U	0.2 U	0.2 U	0.2 U	0.14 U	0.2 U	0.2 U	0.2 U
1,2,4-Trichlorobenzene	0.37 U	0.37 U	0.37 U	0.37 U	0.37 U	0.37 U	0.37 U	0.45 U	0.45 U	0.37 U	0.37 U	0.37 U	0.37 U	0.37 U	0.26 U	0.37 U	0.37 U	0.37 U
1,2,4-Trimethylbenzene	0.35	0.48	0.52	0.25 U	0.52	0.25 U	0.25 U	0.088	0.15 U	0.25 U	0.36	0.68	0.61	0.25 U	0.18 U	0.25 U	0.29	0.4
1,2-Dibromoethane (EDB)	0.38 U	0.38 U	0.38 U	0.38 U	0.38 U	0.38 U	0.38 U	0.23 U	0.12 U	0.38 U	0.38 U	0.38 U	0.38 U	0.38 U	0.27 U	0.38 U	0.38 U	0.38 U
1,2-Dichlorobenzene	0.3 U	0.3 U	0.3 U	0.3 U	0.3 U	0.3 U	0.30 U	0.18 U	0.18 U	0.3 U	0.3 U	0.3 U	0.3 U	0.3 U	0.21 U	0.3 U	0.3 U	0.3 U
1,2-Dichloroethane	0.2 U	0.2 U	0.2 U	0.2 U	0.2 U	0.2 U	0.20 U	0.063	0.061 U	0.2 U	0.2 U	0.2 U	0.2 U	0.2 U	0.14 U	0.2 U	0.2 U	0.2 U
1,2-Dichloropropane	0.23 U	0.23 U	0.23 U	0.23 U	0.23 U	0.23 U	0.23 U	0.14 U	0.069 U	0.23 U	0.23 U	0.23 U	0.23 U	0.23 U	0.17 U	0.23 U	0.23 U	0.23 U
1,2-Dichlorotetrafluoroethane	0.35 U	0.35 U	0.35 U							0.35 U	0.35 U	0.35 U	0.35 U	0.35 U	0.25 U	0.35 U	0.35 U	0.35 U
1,3,5-Trimethylbenzene	0.25 U	0.25 U	0.25 U	0.25 U	0.25 U	0.25 U	0.25 U	0.15 U	0.15 U	0.25 U	0.25 U	0.25 U	0.25 U	0.25 U	0.18 U	0.25 U	0.25 U	0.25 U
1,3-Butadiene	0.11 U	0.11 U	0.11 U	0.11 U	0.11 U	0.11 U	0.11 U	0.066 U	0.066 U	0.11 U	0.11 U	0.3	0.77	0.11 U	0.08 U	0.11 U	0.23 U	0.23 U
1,3-Dichlorobenzene	0.3 U	0.3 U	0.3 U	0.3 U	0.3 U	0.3 U	0.30 U	0.18 U	0.18 U	0.3 U	0.3 U	0.3 U	0.3 U	0.3 U	0.21 U	0.3 U	0.3 U	0.3 U
1,4-Dichlorobenzene	0.3 U	0.3 U	0.3 U	0.3 U	0.3 U	0.3 U	0.30 U	0.18 U	0.18 U	0.3 U	0.3 U	0.3 U	0.3 U	0.3 U	0.21 U	0.3 U	0.3 U	0.3 U
1,4-Dioxane							0.18 U											
2-Butanone	3.1	3.4	0.96	0.36	1.9 B	2.9 U	5.9 U	0.93	0.84	20	4.2	4.6	4	1.7	1.6	2.5	2	2.6
2-Hexanone	0.84	0.68	0.2 U	0.2 U	0.24	4.1 U	0.5	0.12 U	0.16	0.2 U	0.26	0.33	0.3	0.2 U	0.14 U	0.38	0.51	0.58
4-Ethyltoluene	0.25 U	0.25 U	0.25 U	0.25 U	0.25 U	0.25 U	0.25 U	0.15 U	0.15 U	0.25 U	0.25 U	0.25 U	0.25 U	0.25 U	0.18 U	0.25 U	0.25 U	0.25 U
4-Methyl-2-pentanone	0.28	0.49	0.34	0.2 U	0.2 U	0.2 U	0.24	0.1	0.11	0.2 U	0.2 U	0.29	0.34	0.2 U	0.14 U	0.22	0.2 U	0.42
Acetone	18	20	11	9.8 B	15 B	8.9 B	18	6.2	5.4	18	12	17	24	9.7	7.5	50	11	19
Benzene	0.47	0.48	0.72	0.48	1.5	0.26	0.3	0.39	0.36	1	0.71	1.9	3.1	0.69	0.6	0.46	0.41	0.5
Benzyl chloride	0.26 U	0.26 U	0.26 U	0.26 U	0.26 U	0.26 U	0.26 U	0.16 U	0.16 U	0.26 U	0.26 U	0.26 U	0.26 U	0.26 U	0.19 U	0.26 U	0.26 U	0.26 U
Bromodichloromethane	0.33 U	0.33 U	0.33 U	0.34 U	0.34 U	0.34 U	0.34 U	0.2 U	0.1 U	0.33 U	0.33 U	0.33 U	0.33 U	0.33 U	0.24 U	0.33 U	0.33 U	0.33 U
Bromoform	0.51 U	0.51 U	0.51 U	0.52 U	0.52 U	0.52 U	0.52 U	0.31 U	0.31 U	0.51 U	0.51 U	0.51 U	0.51 U	0.51 U	0.36 U	0.51 U	0.51 U	0.51 U
Bromomethane	0.19 U	0.22	0.19 U	0.19 U	0.19 U	0.19 U	0.19 U	0.12 U	0.12 U	0.19 U	0.19 U	0.19 U	0.19 U	0.19 U	0.14 U	0.19 U	0.19 U	0.19 U
Carbon disulfide	0.16 U	0.16 U	0.16 U	0.16 U	0.16 U	0.16 U	1.6 U	0.93 U	0.93 U	0.16 U	0.16 U	0.16 U	0.16 U	0.16 U	0.12 U	0.16 U	0.16 U	0.16 U
Carbon tetrachloride	0.5	0.52	0.5	0.48	0.31 U	0.62	0.52	0.49	0.48	0.34	0.45	0.52	0.6	0.43	0.22 U	0.42	0.4	0.43
Chlorobenzene	0.23 U	0.23 U	0.23 U	0.23 U	0.23 U	0.23 U	0.23 U	0.14 U	0.14 U	0.23 U	0.23 U	0.23 U	0.23 U	0.23 U	0.17 U	0.23 U	0.23 U	0.23 U
Chloroethane	0.13 U	0.13 U	0.13 U	0.13 U	0.13 U	0.13 U	0.13 U	0.079 U	0.079 U	0.13 U	0.13 U	0.43	0.13 U	0.13 U	0.1 U	0.13 U	0.13 U	0.13 U
Chloroform	0.24 U	0.24 U	3.4	0.24 U	0.24 U	0.24 U	0.24 U	0.085	0.073 U	0.24 U	0.24 U	0.24 U	0.24 U	0.24 U	0.17 U	0.24 U	0.24 U	0.24 U
Chloromethane	1.2	1.2	1.1	0.96	0.97	0.95	1.2	0.93	1	1.1	0.98	1.2	1.4	1.1	1.2	1.2	0.91	1.1
cis-1,2-Dichloroethene	0.2 U	0.61	0.2 U	1.7	0.2 U	0.2 U	0.20 U	0.17	0.059 U	1.9	0.2 U	1.1	1.1	0.55	0.61	1.5	0.2 U	0.2 U
cis-1,3-Dichloropropene	0.22 U	0.22 U	0.22 U	0.23 U	0.23 U	0.23 U	0.23 U	0.14 U	0.068 U	0.22 U	0.22 U	0.22 U	0.22 U	0.22 U	0.16 U	0.22 U	0.22 U	0.22 U
Cyclohexane	0.17 U	0.17 U	0.2	0.17 U	0.17 U	0.17 U	0.17 U	0.1 U	0.1 U	0.17 U	0.17 U	0.46	0.6	0.17 U	0.15	0.17 U	0.17 U	0.17 U
Dibromochloromethane	0.43 U	0.43 U	0.43 U	0.43 U	0.43 U	0.43 U	0.43 U	0.26 U	0.13 U	0.43 U	0.43 U	0.43 U	0.43 U	0.43 U	0.31 U	0.43 U	0.43 U	0.43 U
Dichlorodifluoromethane	2.4	2.6	1.7	1.9	3.2	1.6	2	2.7	2.1	1.9	2.3	2.5	2.9	2.6	2	2.9	2.1	2.1
Ethanol	5	7.6	9	2.7	10	2.5	8.5	2.1	2.1	5.5	9.2	13	18	7.9	4.2	9	6.2	7.5
Ethyl acetate	0.18 U	0.18 U	0.18 U	0.18 U	0.18 U	0.18 U	0.18 U	0.22	0.24	0.37 U	0.37 U	0.18 U	0.18 U	0.37 U	0.26 U	0.37 U	0.18 U	0.18 U

**Table 3.
Summary of Analytical Results - Air Sampling for Large Retail Space
Former Gorham Manufacturing Site
Providence, Rhode Island**

Parameter (ug/m ³)	Indoor Air - Large Retail Space																	
	IA-2-091610 9/16/2010	IA-2-070110 7/1/2010	IA-2-091610 9/16/2010	IA-2-120710 12/7/2010	IA-2-021711 2/17/2011	IA-2-060211 6/2/2011	IA-2-091511 9/15/2011	IA-2-120811 12/8/2011	IA-2-030812 3/8/2012	IA-3-011609 1/16/2009	IA-3-020309 2/3/2009	IA-3-021109 2/11/2009	IA-3-021809 2/18/2009	IA-3-022609 2/26/2009	IA-3-041409 4/14/2009	IA-3-042409 4/24/2009	IA-3-091709 9/17/2009	IA-3-092409 9/24/2009
Ethylbenzene	0.24	0.29	0.46	0.22 U	0.5	0.22 U	0.22 U	0.13	0.13 U	0.25	0.29	0.64	0.77	0.22 U	0.16	0.22 U	0.22 U	0.23
Hexachlorobutadiene	0.53 U	0.53 U	0.53 U	0.53 U	0.53 U	0.53 U	0.53 U	0.32 U	0.32 U	1.1 U	1.1 U	1.1 U	1.1 U	1.1 U	0.75 U	1.1 U	0.53 U	0.53 U
Hexane	0.51	0.49	0.53	0.35 U	1.6	0.31	7.0 U	0.32	0.34	0.94	0.87	1.3	1.9	3.7	0.37	0.77	0.96	0.47
Isopropyl alcohol	0.12 U	1.2	0.25 U	0.25 U	2	1.2 U	4.9 U	2.9 U	0.76	3.5	4.1	5.5	4.9	3.1	0.18 U	33	180	5.9
m,p-Xylene	0.96	1.3	1.5	0.43 U	1.5	0.36 J	0.57	0.39	0.18	0.75	0.9	2	2.6	0.65	0.57	0.66	0.7	0.99
Methyl methacrylate				0.2 U	0.2 U	0.2 U	0.20 U	0.12 U	0.12 U									
Methylene chloride	0.35 U	1.3	0.53	0.61	4.2	1	7.5	1.1	1.2	2.2	31	3.1	3.5	33	1.2	3.6	2.4	0.7 U
Methyl-t-butyl ether	0.18 U	0.18 U	0.18 U	0.18 U	0.18 U	0.18 U	0.18 U	0.11 U	0.11 U	0.18 U	0.18 U	0.18 U	0.18 U	0.18 U	0.13 U	0.18 U	0.18 U	0.18 U
n-Heptane	0.2 U	0.8	0.34	0.2 U	0.48	0.2 U	0.20 U	0.091	0.12 U	0.22	0.2 U	0.61	0.77	0.2 U	0.14 U	0.2 U	0.2 U	0.2 U
o-Xylene	0.44	0.57	0.63	0.22 U	0.56	0.22 U	0.23	0.14	0.083	0.28	0.33	0.79	0.86	0.23	0.22	0.24	0.26	0.45
Propylene (Propene)	0.87 U	0.87 U	0.35 U	0.86 U	0.86 U	0.86 U	3.4 U	2.1 U	2.1 U	0.18 U	0.18 U	0.09 U	0.09 U	0.18 U	0.13 U	0.18 U	0.35 U	0.35 U
Styrene	0.25	0.36	0.24	0.21 U	0.21 U	0.21 U	0.21 U	0.059	0.13 U	0.21 U	0.21 U	0.21 U	0.21 U	0.21 U	0.15 U	0.21 U	0.21 U	0.21 U
Tetrachloroethene	0.43	1.4	0.34 U	3.2	5.2 [a]	0.34 U	0.45	0.92	0.23	6.1	0.56	4.3	3.3	1.9	2.2	7.1	0.34 U	0.34 U
Tetrahydrofuran	0.15 U	0.27	0.15 U	0.15 U	0.15 U	0.15 U	0.15 U	0.097	0.088 U	12	1.1	1.3	0.49	0.15 U	0.24	0.15 U	0.15 U	0.15 U
Toluene	0.91	1.3	2.2	0.41	2.9	0.55	0.99	1.6	0.24	1.7	1.5	4.7	5.8	2.1	1	1.2	1.2	1.1
trans-1,2-Dichloroethene	0.2 U	0.2 U	0.2 U	0.2 U	0.2 U	0.2 U	0.20 U	0.12 U	0.059 U	0.2 U	0.2 U	0.2 U	0.2 U	0.2 U	0.14 U	0.2 U	0.2 U	0.2 U
trans-1,3-Dichloropropene	0.22 U	0.22 U	0.22 U	0.23 U	0.23 U	0.23 U	0.23 U	0.14 U	0.068 U	0.22 U	0.22 U	0.22 U	0.22 U	0.22 U	0.16 U	0.22 U	0.22 U	0.22 U
Trichloroethene	0.27 U	0.53	0.27 U	1.7	0.27 U	0.27 U	0.27 U	0.27 U	0.081 U	3.9	0.49	1.7	1.5	0.53	0.77	1.8	0.27 U	0.27 U
Trichlorofluoromethane	1.3	1.6	2.5	1.2	1.8	1.2	1.9	1.1	0.94	1.9	1.3	1.8	2.8	1.8	1.2	1.3	1.4	1.2
Trichlorotrifluoroethane	0.53	0.94	0.45	0.59	0.71	0.71	0.61	0.71	0.42	0.6	0.58	0.49	0.44	0.69	0.53	0.74	0.51	0.46
Vinyl acetate	0.18 U	0.18 U	0.36 U	0.35 U	0.18 U	3.5 U	0.18 U	0.11 U	0.21 U	0.71 U	0.71 U	0.18 U	0.18 U	0.71 U	0.5 U	0.71 U	0.71 U	0.71 U
Vinyl chloride	0.13 U	0.13 U	0.13 U	0.14	0.13 U	0.13 U	0.13 U	0.077 U	0.038 U	0.23	0.13 U	0.19	0.21	0.13 U	0.1 U	0.17	0.13 U	0.13 U

**Table 3.
Summary of Analytical Results - Air Sampling for Large Retail Space
Former Gorham Manufacturing Site
Providence, Rhode Island**

Parameter (ug/m ³)	Indoor Air - Large Retail Space																
	IA-3-100109 10/1/2009	IA-3-100809 10/8/2009	IA-3-012810 1/28/2010	IA-3-020510 2/5/2010	IA-3-021210 2/12/2010	IA-3-021910 2/19/2010	IA-3-032610 3/26/2010	IA-3-043010 4/30/2010	IA-3-052810 5/28/2010	IA-3-070110 7/1/2010	IA-3-091610 9/16/2010	IA-3-120710 12/7/2010	IA-3-021711 2/17/2011	IA-3-060211 6/2/2011	IA-3-091511 9/15/2011	IA-3-120811 12/8/2011	IA-3-030812 3/8/2012
1,1,1-Trichloroethane	0.27 U	0.27 U	0.45	0.71	0.29	0.86	0.27 U	1.2	0.27 U	0.27 U	0.27 U	0.27 U	0.27 U	0.27 U	0.27 U	0.11	0.082 U
1,1,1,2-Tetrachloroethane	0.34 U	0.34 U	0.34 U	0.34 U	0.34 U	0.34 U	0.34 U	0.34 U	0.34 U	0.34 U	0.34 U	0.34 U	0.34 U	0.34 U	0.34 U	0.21 U	0.1 U
1,1,2-Trichloroethane	0.27 U	0.27 U	0.27 U	0.27 U	0.27 U	0.27 U	0.27 U	0.27 U	0.27 U	0.27 U	0.27 U	0.27 U	0.27 U	0.27 U	0.27 U	0.16 U	0.082 U
1,1-Dichloroethane	0.2 U	0.2 U	0.2 U	0.2 U	0.2 U	0.2 U	0.2 U	0.2 U	0.2 U	0.2 U	0.2 U	0.2 U	0.2 U	0.2 U	0.2 U	0.12 U	0.061 U
1,1-Dichloroethene	0.2 U	0.2 U	0.2 U	0.2 U	0.2 U	0.2 U	0.2 U	0.2 U	0.2 U	0.2 U	0.2 U	0.2 U	0.2 U	0.2 U	0.2 U	0.12 U	0.059 U
1,2,4-Trichlorobenzene	0.37 U	0.37 U	0.37 U	0.37 U	0.37 U	0.37 U	0.75 U	0.37 U	0.37 U	0.37 U	0.37 U	0.37 U	0.37 U	0.37 U	0.74 U	0.45 U	0.45 U
1,2,4-Trimethylbenzene	0.25 U	0.39	0.44	0.25 U	0.25 U	0.25 U	0.25 U	0.26	0.34	0.46	0.6	0.25 U	0.49	0.25 U	0.25 U	0.071	0.1
1,2-Dibromoethane (EDB)	0.38 U	0.38 U	0.38 U	0.38 U	0.38 U	0.38 U	0.38 U	0.38 U	0.38 U	0.38 U	0.38 U	0.38 U	0.38 U	0.38 U	0.38 U	0.23 U	0.12 U
1,2-Dichlorobenzene	0.3 U	0.3 U	0.3 U	0.3 U	0.3 U	0.3 U	0.3 U	0.3 U	0.3 U	0.3 U	0.3 U	0.3 U	0.3 U	0.3 U	0.30 U	0.18 U	0.18 U
1,2-Dichloroethane	0.2 U	0.2 U	0.2 U	0.2 U	0.2 U	0.2 U	0.2 U	0.2 U	0.2 U	0.2 U	0.2 U	0.2 U	0.2 U	0.2 U	0.20 U	0.056	0.061 U
1,2-Dichloropropane	0.23 U	0.23 U	0.23 U	0.23 U	0.23 U	0.23 U	0.23 U	0.23 U	0.23 U	0.23 U	0.23 U	0.23 U	0.23 U	0.23 U	0.23 U	0.14 U	0.069 U
1,2-Dichlorotetrafluoroethane	0.35 U	0.35 U	0.35 U	0.35 U	0.35 U	0.35 U	0.35 U	0.35 U	0.35 U	0.35 U	0.35 U	0.35 U	0.35 U	0.35 U	0.35 U	0.35 U	0.35 U
1,3,5-Trimethylbenzene	0.25 U	0.25 U	0.42	0.25 U	0.25 U	0.25 U	0.25 U	0.25 U	0.25 U	0.25 U	0.25 U	0.25 U	0.25 U	0.25 U	0.25 U	0.15 U	0.15 U
1,3-Butadiene	0.23 U	0.23 U	0.23 U	0.23 U	0.23 U	0.23 U	0.11 U	0.23 U	0.11 U	0.11 U	0.11 U	0.11 U	0.11 U	0.11 U	0.11 U	0.066 U	0.066 U
1,3-Dichlorobenzene	0.3 U	0.3 U	0.3 U	0.3 U	0.3 U	0.3 U	0.3 U	0.3 U	0.3 U	0.3 U	0.3 U	0.3 U	0.3 U	0.3 U	0.30 U	0.18 U	0.18 U
1,4-Dichlorobenzene	0.3 U	0.3 U	0.3 U	0.3 U	0.3 U	0.3 U	0.3 U	0.3 U	0.3 U	0.3 U	0.3 U	0.3 U	0.3 U	0.3 U	0.30 U	0.18 U	0.18 U
1,4-Dioxane															0.18 U		
2-Butanone	0.7	1.5	1.9	2	1.2	1.6	0.51	1	2.2	3.3	0.95	0.39	0.76 B	2.9 U	5.9 U	1.2	0.45
2-Hexanone	0.2 U	0.37	0.52	0.39	0.22	0.39	0.2 U	0.29	0.52	0.67	0.2 U	0.2 U	0.2 U	4.1 U	0.24	0.093	0.12 U
4-Ethyltoluene	0.25 U	0.25 U	0.25 U	0.25 U	0.25 U	0.25 U	0.25 U	0.25 U	0.25 U	0.25 U	0.25 U	0.25 U	0.25 U	0.25 U	0.25 U	0.15 U	0.15 U
4-Methyl-2-pentanone	0.2 U	0.2 U	0.2 U	0.2 U	0.2 U	0.2 U	0.2 U	0.2 U	0.2 U	0.38	0.34	0.2 U	0.2 U	0.2 U	0.20 U	0.084	0.12 U
Acetone	6.7	11	14	21	6.7	7.3	3.8	7.7	15	21	11	9.7 B	9.7 B	11 B	13	7.2	3.9
Benzene	0.39	0.46	1.3	0.86	0.67	0.53	0.6	0.67	0.47	0.51	0.72	0.47	1.4	0.29	0.3	0.39	0.35
Benzyl chloride	0.26 U	0.26 U	0.26 U	0.26 U	0.26 U	0.26 U	0.26 U	0.26 U	0.26 U	0.26 U	0.26 U	0.26 U	0.26 U	0.26 U	0.26 U	0.16 U	0.16 U
Bromodichloromethane	0.33 U	0.33 U	0.33 U	0.33 U	0.33 U	0.33 U	0.33 U	0.33 U	0.33 U	0.33 U	0.33 U	0.34 U	0.34 U	0.34 U	0.34 U	0.2 U	0.1 U
Bromoform	0.51 U	0.51 U	0.51 U	0.51 U	0.51 U	0.51 U	0.51 U	0.51 U	0.51 U	0.51 U	0.51 U	0.52 U	0.52 U	0.52 U	0.52 U	0.31 U	0.31 U
Bromomethane	0.19 U	0.19 U	0.19 U	0.19 U	0.19 U	0.19 U	0.19 U	0.19 U	0.19 U	0.19 U	0.19 U	0.19 U	0.19 U	0.19 U	0.19 U	0.12 U	0.12 U
Carbon disulfide	0.16 U	0.16 U	0.16 U	0.16 U	0.16 U	0.16 U	0.16 U	0.16 U	0.16 U	0.16 U	0.16 U	0.16 U	0.16 U	0.16 U	1.6 U	0.93 U	0.93 U
Carbon tetrachloride	0.4	0.42	0.31 U	0.42	0.31 U	0.43	0.43	0.49	0.54	0.57	0.41	0.45	0.6	0.64	0.51	0.5	0.49
Chlorobenzene	0.23 U	0.23 U	0.23 U	0.23 U	0.23 U	0.23 U	0.23 U	0.23 U	0.23 U	0.23 U	0.23 U	0.23 U	0.23 U	0.23 U	0.23 U	0.14 U	0.14 U
Chloroethane	0.13 U	0.13 U	0.13 U	0.13 U	0.13 U	0.13 U	0.13 U	0.13 U	0.13 U	0.13 U	0.13 U	0.13 U	0.13 U	0.13 U	0.13 U	0.079 U	0.079 U
Chloroform	0.24 U	0.24 U	0.24 U	0.53	0.48	0.24 U	0.24 U	0.24 U	0.24 U	0.24 U	0.24 U	3.7	0.24 U	0.24 U	0.24 U	0.079	0.073 U
Chloromethane	0.97	1	1.2	2.9	1.3	1.2	1.1	0.85	1.2	1.2	1.1	0.98	0.97	1.2	1.4	0.84	1.1
cis-1,2-Dichloroethene	0.94	0.49	0.59	0.2 U	0.2 U	0.59	0.2 U	1.3	0.2 U	0.51	0.2 U	1.7	0.2 U	0.2 U	0.20 U	0.17	0.059 U
cis-1,3-Dichloropropene	0.22 U	0.22 U	0.22 U	0.22 U	0.22 U	0.22 U	0.22 U	0.22 U	0.22 U	0.22 U	0.22 U	0.23 U	0.23 U	0.23 U	0.23 U	0.14 U	0.068 U
Cyclohexane	0.17 U	0.17 U	0.17 U	0.17 U	0.17 U	0.17 U	0.17 U	0.17 U	0.17 U	0.17 U	0.18	0.17 U	0.17 U	0.17 U	0.17 U	0.1 U	0.1 U
Dibromochloromethane	0.43 U	0.43 U	0.43 U	0.43 U	0.43 U	0.43 U	0.43 U	0.43 U	0.43 U	0.43 U	0.43 U	0.43 U	0.43 U	0.43 U	0.43 U	0.26 U	0.13 U
Dichlorodifluoromethane	2.2	2.2	2.3	2.5	2.5	3	1.6	2.1	2.5	2.7	1.5	2.1	3.1	2.1	1.8	2.6	2.1
Ethanol	4.5	5	13	40	17	38	3.6	5.3	5.5	7	8	2.4	9.4	3.6	5.8	2.1	2.2
Ethyl acetate	0.18 U	0.18 U	0.18 U	0.18 U	0.18 U	0.18 U	0.18 U	0.18 U	0.18 U	0.18 U	0.18 U	0.18 U	0.18 U	0.18 U	0.18 U	0.11 U	0.73

**Table 3.
Summary of Analytical Results - Air Sampling for Large Retail Space
Former Gorham Manufacturing Site
Providence, Rhode Island**

Parameter (ug/m ³)	Indoor Air - Large Retail Space																
	IA-3-100109 10/1/2009	IA-3-100809 10/8/2009	IA-3-012810 1/28/2010	IA-3-020510 2/5/2010	IA-3-021210 2/12/2010	IA-3-021910 2/19/2010	IA-3-032610 3/26/2010	IA-3-043010 4/30/2010	IA-3-052810 5/28/2010	IA-3-070110 7/1/2010	IA-3-091610 9/16/2010	IA-3-120710 12/7/2010	IA-3-021711 2/17/2011	IA-3-060211 6/2/2011	IA-3-091511 9/15/2011	IA-3-120811 12/8/2011	IA-3-030812 3/8/2012
Ethylbenzene	0.22 U	0.24	0.43	0.22 U	0.22 U	0.22 U	0.22 U	0.26	0.23	0.29	0.47	0.22 U	0.47	0.36	0.22 U	0.12	0.11
Hexachlorobutadiene	0.53 U	0.53 U	0.53 U	0.53 U	0.53 U	0.53 U	1.1 U	0.53 U	0.53 U	0.53 U	0.53 U	0.53 U	0.53 U	0.53 U	0.53 U	0.32 U	0.32 U
Hexane	0.37	0.71	0.55	0.44	1	0.29	0.19	1.4	0.55	0.45	0.58	0.35 U	1.5	2.6	7.0 U	0.35	0.37
Isopropyl alcohol	0.25 U	0.25 U	0.25 U	9.9	0.25 U	2	0.64	3.4	0.12 U	0.76	8.8	1.1	1.7	1.2 U	4.9 U	2.9 U	0.56
m,p-Xylene	0.65	0.87	1.2	0.69	0.43 U	0.43 U	0.46	0.8	0.99	1.3	1.6	0.43 U	1.4	0.55	0.54	0.38	0.24
Methyl methacrylate												0.2 U	0.2 U	0.2 U	0.20 U	0.12 U	0.12 U
Methylene chloride	0.7 U	0.7 U	1.4	0.7 U	2.3	0.7 U	0.7 U	0.7 U	0.35 U	1.2	0.57	0.55	4.6	8	1.7 U	1.5	1.1
Methyl-t-butyl ether	0.18 U	0.18 U	0.18 U	0.18 U	0.18 U	0.18 U	0.18 U	0.18 U	0.18 U	0.18 U	0.18 U	0.18 U	0.18 U	0.18 U	0.18 U	0.11 U	0.11 U
n-Heptane	0.2 U	0.24	0.73	0.2 U	0.2 U	0.2 U	0.2 U	0.36	0.2 U	0.2 U	0.32	0.2 U	0.44	0.2 U	0.20 U	0.074	0.12 U
o-Xylene	0.27	0.34	0.44	0.26	0.22 U	0.22 U	0.22 U	0.32	0.43	0.58	0.64	0.22 U	0.48	0.23	0.23	0.13	0.11
Propylene (Propene)	0.18 U	0.35 U	0.35 U	0.35 U	0.35 U	0.35 U	0.35 U	0.35 U	0.87 U	0.87 U	0.35 U	0.86 U	0.86 U	0.86 U	3.4 U	2.1 U	2.1 U
Styrene	0.21 U	0.21 U	0.40	0.21 U	0.21 U	0.21 U	0.21 U	0.21 U	0.23	0.34	0.26	0.21 U	0.21 U	0.21 U	0.21 U	0.041	0.13 U
Tetrachloroethene	2	1.1	2.2	0.34 U	0.34 U	1.3	0.34 U	4.8	0.35	1.1	0.76	3.2	5.2 [a]	0.34 U	0.47	0.91	0.23
Tetrahydrofuran	0.15 U	0.15 U	0.40	0.15 U	0.15 U	0.15 U	0.15 U	0.15 U	0.16	0.24	0.15 U	0.15 U	0.15 U	0.15 U	0.15 U	0.08	0.088 U
Toluene	0.73	1.1	2.5	0.78	0.61	0.46	0.81	1.5	0.93	1.1	2.3	0.41	2.7	0.58	0.95	1.5	0.27
trans-1,2-Dichloroethene	0.2 U	0.2 U	0.2 U	0.2 U	0.2 U	0.2 U	0.2 U	0.2 U	0.2 U	0.2 U	0.2 U	0.2 U	0.2 U	0.2 U	0.20 U	0.12 U	0.059 U
trans-1,3-Dichloropropene	0.22 U	0.22 U	0.22 U	0.22 U	0.22 U	0.22 U	0.22 U	0.22 U	0.22 U	0.22 U	0.22 U	0.23 U	0.23 U	0.23 U	0.23 U	0.14 U	0.068 U
Trichloroethene	1.1	0.54	0.75	0.27 U	0.27 U	0.4	0.27 U	1.5	0.27 U	0.47	0.27 U	1.7	0.27 U	0.27 U	0.27 U	0.25	0.081 U
Trichlorofluoromethane	1.2	1.2	1.2	1.3	1.4	1.6	1.3	1.2	1.3	1.5	2.8	1.2	1.7	1.6	1.7	1	0.92
Trichlorotrifluoroethane	0.49	0.47	0.49	0.52	0.57	0.52	0.57	0.45	0.52	0.54	0.45	0.55	0.67	0.74	0.54	0.69	0.44
Vinyl acetate	0.71 U	0.71 U	0.71 U	0.71 U	0.71 U	0.71 U	0.36 U	0.71 U	0.18 U	0.18 U	0.36 U	0.35 U	0.18 U	3.5 U	0.18 U	0.11 U	0.21 U
Vinyl chloride	0.18	0.13 U	0.13 U	0.13 U	0.13 U	0.13 U	0.13 U	0.14	0.13 U	0.13 U	0.13 U	0.13 U	0.13 U	0.13 U	0.13 U	0.077 U	0.038 U

**Table 3.
Summary of Analytical Results - Air Sampling for Large Retail Space
Former Gorham Manufacturing Site
Providence, Rhode Island**

Parameter (ug/m ³)	Indoor Air - Large Retail Space														
	IA-4 011609 1/16/2009	IA-4- 020309 2/3/2009	IA-4- 021109 2/11/2009	IA-4- 021809 2/18/2009	IA-4- 022609 2/26/2009	IA-4- 041409 4/14/2009	IA-4- 042409 4/24/2009	IA-4- 091709 9/17/2009	IA-4- 092409 9/24/2009	IA-4- 100109 10/1/2009	IA-4- 100809 10/8/2009	IA-4- 012810 1/28/2010	IA-4- 020510 2/5/2010	IA-4- 021210 2/12/2010	IA-4- 021910 2/19/2010
1,1,1-Trichloroethane	10	0.62	1.1	1.1	0.45	1.5	2.2	0.27 U	0.27 U	0.27 U	0.27 U	0.27 U	0.76	0.29	0.89
1,1,1,2-Tetrachloroethane	0.34 U	0.34 U	0.34 U	0.34 U	0.34 U	0.24 U	0.34 U	0.34 U	0.34 U	0.34 U	0.34 U	0.34 U	0.34 U	0.34 U	0.34 U
1,1,2-Trichloroethane	0.27 U	0.27 U	0.27 U	0.27 U	0.27 U	0.19 U	0.27 U	0.27 U	0.27 U	0.27 U	0.27 U	0.27 U	0.27 U	0.27 U	0.27 U
1,1-Dichloroethane	0.73	0.2 U	0.2 U	0.2 U	0.31	0.14 U	0.2 U	0.2 U	0.2 U	0.2 U	0.2 U	0.2 U	0.2 U	0.2 U	0.2 U
1,1-Dichloroethene	0.42	0.2 U	0.2 U	0.2 U	0.2 U	0.14 U	0.2 U	0.2 U	0.2 U	0.2 U	0.2 U	0.2 U	0.2 U	0.2 U	0.2 U
1,2,4-Trichlorobenzene	0.37 U	0.37 U	0.37 U	0.37 U	0.37 U	0.26 U	0.37 U	0.37 U	0.37 U	0.37 U	0.37 U	0.37 U	0.37 U	0.37 U	0.37 U
1,2,4-Trimethylbenzene	0.26	0.37	0.74	0.65	0.29	0.18 U	0.25 U	0.25 U	0.41	0.28	0.41	0.25 U	0.25 U	0.25 U	0.25 U
1,2-Dibromoethane (EDB)	0.38 U	0.38 U	0.38 U	0.38 U	0.38 U	0.27 U	0.38 U	0.38 U	0.38 U	0.38 U	0.38 U	0.38 U	0.38 U	0.38 U	0.38 U
1,2-Dichlorobenzene	0.3 U	0.3 U	0.3 U	0.3 U	0.3 U	0.21 U	0.3 U	0.3 U	0.3 U	0.3 U	0.3 U	0.3 U	0.3 U	0.3 U	0.3 U
1,2-Dichloroethane	0.2 U	0.2 U	0.2 U	0.2 U	0.2 U	0.14 U	0.2 U	0.2 U	0.2 U	0.2 U	0.2 U	0.2 U	0.2 U	0.2 U	0.2 U
1,2-Dichloropropane	0.23 U	0.23 U	0.23 U	0.23 U	0.23 U	0.17 U	0.23 U	0.23 U	0.23 U	0.23 U	0.23 U	0.23 U	0.23 U	0.23 U	0.23 U
1,2-Dichlorotetrafluoroethane	0.35 U	0.35 U	0.35 U	0.35 U	0.35 U	0.25 U	0.35 U	0.35 U	0.35 U	0.35 U	0.35 U	0.35 U	0.35 U	0.35 U	0.35 U
1,3,5-Trimethylbenzene	0.25 U	0.25 U	0.25 U	0.25 U	0.25 U	0.18 U	0.25 U	0.25 U	0.25 U	0.25 U	0.25 U	0.25 U	0.25 U	0.25 U	0.25 U
1,3-Butadiene	0.11 U	0.11 U	0.33	0.77	0.11 U	0.08 U	0.11 U	0.23 U	0.23 U	0.23 U	0.23 U	0.23 U	0.23 U	0.23 U	0.23 U
1,3-Dichlorobenzene	0.3 U	0.3 U	0.3 U	0.3 U	0.3 U	0.21 U	0.3 U	0.3 U	0.3 U	0.3 U	0.3 U	0.3 U	0.3 U	0.3 U	0.3 U
1,4-Dichlorobenzene	0.3 U	0.3 U	0.3 U	0.3 U	0.3 U	0.21 U	0.3 U	0.3 U	0.3 U	0.3 U	0.3 U	0.3 U	0.3 U	0.3 U	0.3 U
1,4-Dioxane															
2-Butanone	21	4.4	6	3.2	2.5	1.1	1.6	1.5	2	1.30	1.20	0.3 U	0.69	1.2	0.50
2-Hexanone	0.2 U	0.33	0.73	0.39	0.2 U	0.14 U	0.2 U	0.29	0.45	0.32	0.27	0.2 U	0.2 U	0.2 U	0.2 U
4-Ethyltoluene	0.25 U	0.25 U	0.25 U	0.25 U	0.25 U	0.18 U	0.25 U	0.25 U	0.25 U	0.25 U	0.25 U	0.25 U	0.25 U	0.25 U	0.25 U
4-Methyl-2-pentanone	0.2 U	0.2 U	0.43	0.28	0.2 U	0.14 U	0.2 U	0.2 U	0.32	0.2 U	0.2 U	0.2 U	0.2 U	0.2 U	0.2 U
Acetone	17	10	15	20	7.8	7.9	20	9.3	16	9.3	10	2.3	4.9	5.9	2.5
Benzene	1.1	0.68	1.8	3	0.76	0.59	0.44	0.4	0.43	0.37	0.48	0.16 U	0.88	0.66	0.54
Benzyl chloride	0.26 U	0.26 U	0.26 U	0.26 U	0.26 U	0.19 U	0.26 U	0.26 U	0.26 U	0.26 U	0.26 U	0.26 U	0.26 U	0.26 U	0.26 U
Bromodichloromethane	0.33 U	0.33 U	0.33 U	0.33 U	0.33 U	0.24 U	0.33 U	0.33 U	0.33 U	0.33 U	0.33 U	0.33 U	0.33 U	0.33 U	0.33 U
Bromoform	0.51 U	0.51 U	0.51 U	0.51 U	0.51 U	0.36 U	0.51 U	0.51 U	0.51 U	0.51 U	0.51 U	0.51 U	0.51 U	0.51 U	0.51 U
Bromomethane	0.19 U	0.19 U	0.19 U	0.19 U	0.19 U	0.14 U	0.19 U	0.19 U	0.19 U	0.19 U	0.19 U	0.19 U	0.19 U	0.19 U	0.19 U
Carbon disulfide	0.16 U	0.16 U	0.16 U	0.16 U	0.16 U	0.12 U	0.16 U	0.16 U	0.16 U	0.16 U	0.16 U	0.16 U	0.16 U	0.16 U	0.16 U
Carbon tetrachloride	0.4	0.43	0.5	0.58	0.46	0.22 U	0.45	0.41	0.4	0.46	0.4	0.31 U	0.43	0.31 U	0.42
Chlorobenzene	0.23 U	0.23 U	0.23 U	0.23 U	0.23 U	0.17 U	0.23 U	0.23 U	0.23 U	0.23 U	0.23 U	0.23 U	0.23 U	0.23 U	0.23 U
Chloroethane	0.13 U	0.13 U	0.41	0.13 U	0.13 U	0.1 U	0.13 U	0.13 U	0.13 U	0.13 U	0.13 U	0.13 U	0.13 U	0.13 U	0.13 U
Chloroform	0.24 U	0.24 U	0.24 U	0.24 U	0.26	0.17 U	0.24 U	0.24 U	0.24 U	0.24 U	0.24 U	0.24 U	0.46	0.39	0.24 U
Chloromethane	1.2	0.99	1.4	1.3	1	1.1	1.2	0.9	1.1	1	1	1.3	1.3	1.3	1.2
cis-1,2-Dichloroethene	2.4	0.2 U	1.1	1.1	0.98	0.61	1.7	0.2 U	0.2 U	0.84	0.48	0.2 U	0.2 U	0.2 U	0.59
cis-1,3-Dichloropropene	0.22 U	0.22 U	0.22 U	0.22 U	0.22 U	0.16 U	0.22 U	0.22 U	0.22 U	0.22 U	0.22 U	0.22 U	0.22 U	0.22 U	0.22 U
Cyclohexane	0.17 U	0.17 U	0.44	0.64	0.17 U	0.12 U	0.17 U	0.17 U	0.17 U	0.17 U	0.17 U	0.17 U	0.17 U	0.17 U	0.17 U
Dibromochloromethane	0.43 U	0.43 U	0.43 U	0.43 U	0.43 U	0.31 U	0.43 U	0.43 U	0.43 U	0.43 U	0.43 U	0.43 U	0.43 U	0.43 U	0.43 U
Dichlorodifluoromethane	1.9	2.2	2.5	2.8	2.6	2.1	2.4	2.1	2	2.2	2.2	2.4	2.5	2.6	3.0
Ethanol	5.3	8.9	12	18	8	5.2	5.5	6	6.5	4.9	5.6	7.7	34	17	31
Ethyl acetate	0.37 U	0.37 U	0.18 U	0.19	0.37 U	0.26 U	0.37 U	0.18 U	0.18 U	0.18 U	0.18 U	0.18 U	0.18 U	0.18 U	0.18 U

**Table 3.
Summary of Analytical Results - Air Sampling for Large Retail Space
Former Gorham Manufacturing Site
Providence, Rhode Island**

Parameter (ug/m ³)	Indoor Air - Large Retail Space														
	IA-4 011609 1/16/2009	IA-4- 020309 2/3/2009	IA-4- 021109 2/11/2009	IA-4- 021809 2/18/2009	IA-4- 022609 2/26/2009	IA-4- 041409 4/14/2009	IA-4- 042409 4/24/2009	IA-4- 091709 9/17/2009	IA-4- 092409 9/24/2009	IA-4- 100109 10/1/2009	IA-4- 100809 10/8/2009	IA-4- 012810 1/28/2010	IA-4- 020510 2/5/2010	IA-4- 021210 2/12/2010	IA-4- 021910 2/19/2010
Ethylbenzene	0.25	0.29	0.65	0.78	0.29	0.16	0.22 U	0.22 U	0.27	0.22 U	0.26	0.22 U	0.26	0.22 U	0.22 U
Hexachlorobutadiene	1.1 U	1.1 U	1.1 U	1.1 U	1.1 U	0.75 U	1.1 U	0.53 U	0.53 U	0.53 U	0.53 U	0.53 U	0.53 U	0.53 U	0.53 U
Hexane	0.9	0.66	1.2	1.7	0.66	0.43	0.34	0.42	2.2	0.49	0.93	0.18 U	0.37	1.3	0.49
Isopropyl alcohol	3.5	3.3	4.7	4.8	3.9	0.18 U	13	5.6	5.2	0.25 U	0.25 U	0.96	0.25 U	0.25 U	1.9
m,p-Xylene	0.76	0.89	2.1	2.6	0.89	0.58	0.49	0.61	0.93	0.69	1	0.43 U	0.81	0.43 U	0.43 U
Methyl methacrylate															
Methylene chloride	2.3	29	1.7	2.5	1.3	1.9	2.2	0.7 U	9.7	0.7 U	0.7 U	1.5	0.7 U	1.9	0.71
Methyl-t-butyl ether	0.18 U	0.18 U	0.18 U	0.18 U	0.18 U	0.13 U	0.18 U	0.18 U	0.18 U	0.18 U	0.18 U	0.18 U	0.18 U	0.18 U	0.18 U
n-Heptane	0.23	0.2 U	0.58	0.79	0.21	0.14 U	0.2 U	0.2 U	0.2 U	0.2 U	0.26	0.2 U	0.2 U	0.2 U	0.2 U
o-Xylene	0.27	0.33	0.78	0.87	0.33	0.22	0.22 U	0.22 U	0.42	0.28	0.4	0.22 U	0.31	0.22 U	0.22 U
Propylene (Propene)	0.18 U	0.18 U	0.09 U	0.09 U	0.18 U	0.13 U	0.18 U	0.35 U	0.35 U	0.18 U	0.35 U	0.35 U	0.35 U	0.35 U	0.35 U
Styrene	0.21 U	0.21 U	0.22	0.23	0.21 U	0.15 U	0.21 U	0.21 U	0.21	0.21 U	0.21 U	0.21 U	0.21 U	0.21 U	0.21 U
Tetrachloroethene	7.3	0.58	4.4	3.4	3.4	2.4	7.9	0.75	0.34 U	2	1.1	0.34 U	0.34 U	0.34 U	1.4
Tetrahydrofuran	13	1.2	1.3	0.47	0.34	0.21	0.25	0.15 U	0.15 U	0.15 U	0.15 U	0.15 U	0.15 U	0.15 U	0.15 U
Toluene	1.8	1.3	4.3	5.8	2.3	1	1	1.1	1.3	0.76	1.2	0.19 U	0.79	0.63	0.47
trans-1,2-Dichloroethene	0.2 U	0.2 U	0.2 U	0.2 U	0.2 U	0.14 U	0.2 U	0.2 U	0.2 U	1.1	0.2 U	0.2 U	0.2 U	0.2 U	0.2 U
trans-1,3-Dichloropropene	0.22 U	0.22 U	0.22 U	0.22 U	0.22 U	0.16 U	0.22 U	0.22 U	0.22 U	0.22 U	0.22 U	0.22 U	0.22 U	0.22 U	0.22 U
Trichloroethene	4.7	0.48	1.7	1.5	0.88	0.78	2	0.27 U	0.27 U	1.10	0.57	0.27 U	0.27 U	0.27 U	0.40
Trichlorofluoromethane	2	1.3	1.6	3	1.7	1.3	1.3	1.2	1.5	1.2	1.2	0.93	1.3	1.4	1.6
Trichlorotrifluoroethane	0.72	0.59	0.51	0.45	0.57	0.54	0.61	0.49	0.48	0.47	0.5	0.38 U	0.55	0.58	0.55
Vinyl acetate	0.71 U	0.71 U	0.18 U	0.18 U	0.71 U	0.5 U	0.71 U	0.71 U	0.71 U	0.71 U	0.71 U	0.71 U	0.71 U	0.71 U	0.71 U
Vinyl chloride	0.29	0.13 U	0.2	0.22	0.13 U	0.1 U	0.2	0.13 U	0.13 U	0.16	0.13 U	0.13 U	0.13 U	0.13 U	0.13 U

**Table 3.
Summary of Analytical Results - Air Sampling for Large Retail Space
Former Gorham Manufacturing Site
Providence, Rhode Island**

Parameter (ug/m ³)	Indoor Air - Large Retail Space																
	IA-4-032610 3/26/2010	IA-4-043010 4/30/2010	IA-4-052810 5/28/2010	IA-4-070110 7/1/2010	IA-4-091610 9/16/2010	IA-4-120710 12/7/2010	IA-4-021711 2/17/2011	IA-4-060211 6/2/2011	IA-4-091511 9/15/2011	IA-4-120811 12/8/2011	IA-4-030812 3/8/2012	LRAIR01 5/15/2009	LRAIR02 5/15/2009	LRAIR03 5/15/2009	LRAIR04 5/15/2009	LRAIR05 5/15/2009	LRAIR06 5/15/2009
1,1,1-Trichloroethane	0.27 U	1.1	0.28	0.27 U	0.27 U	0.27 U	0.27 U	0.27 U	0.27 U	0.14	0.082 U	0.45	0.52	0.65	0.57	0.51	0.44
1,1,1,2-Tetrachloroethane	0.34 U	0.34 U	0.34 U	0.34 U	0.34 U	0.34 U	0.34 U	0.34 U	0.34 U	0.21 U	0.1 U	0.34 U	0.34 U	0.34 U	0.34 U	0.34 U	0.34 U
1,1,2-Trichloroethane	0.27 U	0.27 U	0.27 U	0.27 U	0.27 U	0.27 U	0.27 U	0.27 U	0.27 U	0.16 U	0.082 U	0.27 U	0.27 U	0.27 U	0.27 U	0.27 U	0.27 U
1,1-Dichloroethane	0.2 U	0.2 U	0.2 U	0.2 U	0.2 U	0.2 U	0.2 U	0.2 U	0.2 U	0.20 U	0.12 U	0.061 U	0.2 U	0.2 U	0.2 U	0.2 U	0.2 U
1,1-Dichloroethene	0.2 U	0.2 U	0.2 U	0.2 U	0.2 U	0.2 U	0.2 U	0.2 U	0.2 U	0.20 U	0.12 U	0.059 U	0.2 U	0.2 U	0.2 U	0.2 U	0.2 U
1,2,4-Trichlorobenzene	0.75 U	0.37 U	0.37 U	0.37 U	0.37 U	0.37 U	0.37 U	0.37 U	0.74 U	0.45 U	0.45 U	0.37 U	0.37 U	0.37 U	0.37 U	0.37 U	0.37 U
1,2,4-Trimethylbenzene	0.25 U	0.25 U	0.34	0.41	0.44	0.25 U	0.49	0.25 U	0.25 U	0.094	0.15 U	0.25 U	0.25 U	0.25 U	0.29	0.25 U	0.25 U
1,2-Dibromoethane (EDB)	0.38 U	0.38 U	0.38 U	0.38 U	0.38 U	0.38 U	0.38 U	0.38 U	0.38 U	0.23 U	0.12 U	0.38 U	0.38 U	0.38 U	0.38 U	0.38 U	0.38 U
1,2-Dichlorobenzene	0.3 U	0.3 U	0.3 U	0.3 U	0.3 U	0.3 U	0.3 U	0.3 U	0.30 U	0.18 U	0.18	0.3 U	0.3 U	0.3 U	0.3 U	0.3 U	0.3 U
1,2-Dichloroethane	0.2 U	0.2 U	0.2 U	0.2 U	0.2 U	0.2 U	0.2 U	0.2 U	0.20 U	0.063	0.061 U	0.2 U	0.2 U	0.2 U	0.2 U	0.2 U	0.2 U
1,2-Dichloropropane	0.23 U	0.23 U	0.23 U	0.23 U	0.23 U	0.23 U	0.23 U	0.23 U	0.23 U	0.14 U	0.069 U	0.23 U	0.23 U	0.23 U	0.23 U	0.23 U	0.23 U
1,2-Dichlorotetrafluoroethane	0.35 U	0.35 U	0.35 U	0.35 U	0.35 U							0.35 U	0.35 U	0.35 U	0.35 U	0.35 U	0.35 U
1,3,5-Trimethylbenzene	0.25 U	0.25 U	0.25 U	0.25 U	0.25 U	0.25 U	0.25 U	0.25 U	0.15 U	0.15 U		0.25 U	0.25 U	0.25 U	0.25 U	0.25 U	0.25 U
1,3-Butadiene	0.11 U	0.23 U	0.11 U	0.11 U	0.11 U	0.11 U	0.11 U	0.11 U	0.11 U	0.066 U	0.066 U	0.11 U	0.11 U	0.11 U	0.11 U	0.11 U	0.11 U
1,3-Dichlorobenzene	0.3 U	0.3 U	0.3 U	0.3 U	0.3 U	0.3 U	0.3 U	0.3 U	0.30 U	0.18 U	0.18 U	0.3 U	0.3 U	0.3 U	0.3 U	0.3 U	0.3 U
1,4-Dichlorobenzene	0.3 U	0.3 U	0.3 U	0.3 U	0.3 U	0.3 U	0.3 U	0.3 U	0.30 U	0.18 U	0.18 U	0.3 U	0.3 U	0.3 U	0.3 U	0.3 U	0.3 U
1,4-Dioxane									0.18 U								
2-Butanone	1.60	1.50	2.20	4.8	2.4	0.96	1 B	2.9 U	5.9 U	1	1.5	3.3	3.4	2.1	2.6	2	1.6
2-Hexanone	0.2 U	0.39	0.54	1	0.59	0.2 U	0.2 U	0.21 J	0.35	0.086	0.32	0.73	0.66	0.38	0.51	0.37	0.38
4-Ethyltoluene	0.25 U	0.25 U	0.25 U	0.25 U	0.25 U	0.25 U	0.25 U	0.25 U	0.25 U	0.15 U	0.15 U	0.25 U	0.25 U	0.25 U	0.25 U	0.25 U	0.25 U
4-Methyl-2-pentanone	0.2 U	0.2 U	0.2 U	0.43	0.45	0.2 U	0.2 U	0.2 U	0.20 U	0.098	0.15	0.42	0.39	0.32	0.36	0.54	0.27
Acetone	6.9	8.7	15	31	19	13 B	12 B	12 B	15	7.4	6.8	12	13	10	11	8.5	7.7
Benzene	0.57	0.64	0.48	0.47	0.66	0.49	1.4	0.31	0.3	0.38	0.35	0.54	0.6	0.67	0.55	0.56	0.51
Benzyl chloride	0.26 U	0.26 U	0.26 U	0.26 U	0.26 U	0.26 U	0.26 U	0.26 U	0.26 U	0.16 U	0.16 U	0.26 U	0.26 U	0.26 U	0.26 U	0.26 U	0.26 U
Bromodichloromethane	0.33 U	0.33 U	0.33 U	0.33 U	0.33 U	0.34 U	0.34 U	0.34 U	0.34 U	0.2 U	0.1 U	0.33 U	0.33 U	0.33 U	0.33 U	0.33 U	0.33 U
Bromoform	0.51 U	0.51 U	0.51 U	0.51 U	0.51 U	0.52 U	0.52 U	0.52 U	0.52 U	0.31 U	0.31 U	0.51 U	0.51 U	0.51 U	0.51 U	0.51 U	0.51 U
Bromomethane	0.19 U	0.19 U	0.19 U	0.19 U	0.19 U	0.19 U	0.19 U	0.19 U	0.19 U	0.19 U	0.12 U	0.12 U	0.19 U	0.19 U	0.19 U	0.19 U	0.19 U
Carbon disulfide	0.16 U	0.16 U	0.31	0.16 U	0.16 U	0.16 U	0.16 U	0.16 U	1.6 U	0.93 U	0.93 U	0.16 U	0.16 U	0.16 U	0.16 U	0.16 U	0.16 U
Carbon tetrachloride	0.43	0.47	0.52	0.48	0.44	0.46	0.57	0.68	0.52	0.48	0.47	0.7	0.68	0.71	0.68	0.68	0.63
Chlorobenzene	0.23 U	0.23 U	0.23 U	0.23 U	0.23 U	0.23 U	0.23 U	0.23 U	0.23 U	0.14 U	0.14 U	0.23 U	0.23 U	0.23 U	0.23 U	0.23 U	0.23 U
Chloroethane	0.13 U	0.13 U	0.13 U	0.13 U	0.13 U	0.13 U	0.13 U	0.13 U	0.13 U	0.079 U	0.079 U	0.13 U	0.13 U	0.13 U	0.13 U	0.13 U	0.13 U
Chloroform	0.24 U	0.24 U	0.24 U	0.24 U	3.3	0.24 U	0.24 U	0.24 U	0.24 U	0.085	0.073 U	0.24 U	0.24 U	0.24 U	0.24 U	0.24 U	0.24 U
Chloromethane	1.1	0.77	1.2	1.2	1	0.95	0.95	1.1	1.5	1.4	1	1	0.98	1	0.95	1	1
cis-1,2-Dichloroethene	0.2 U	1.3	0.2 U	0.44	0.2 U	1.8	0.2 U	0.2 U	0.20 U	0.19	0.059 U	0.2 U	0.2 U	0.2 U	0.2 U	0.2 U	0.2 U
cis-1,3-Dichloropropene	0.22 U	0.22 U	0.22 U	0.22 U	0.22 U	0.23 U	0.23 U	0.23 U	0.23 U	0.14 U	0.068 U	0.22 U	0.22 U	0.22 U	0.22 U	0.22 U	0.22 U
Cyclohexane	0.17 U	0.17 U	0.17 U	0.17 U	0.17 U	0.17 U	0.17 U	0.17 U	0.17 U	0.1 U	0.1 U	0.17 U	0.17 U	0.17 U	0.17 U	0.17 U	0.17 U
Dibromochloromethane	0.43 U	0.43 U	0.43 U	0.43 U	0.43 U	0.43 U	0.43 U	0.43 U	0.43 U	0.26 U	0.13 U	0.43 U	0.43 U	0.43 U	0.43 U	0.43 U	0.43 U
Dichlorodifluoromethane	1.7	2.1	2.5	2.6	1.5	2	3.2	1.8	1.7	2.8	2	2.5	2.3	2.6	2.4	2.7	2.4
Ethanol	3.9	4.9	6.1	8.7	9.8	3.4	8.9	5.3	7	2.4	2.5	65	9	6.5	5.9	6	5.6
Ethyl acetate	0.18 U	0.18 U	0.18 U	0.18 U	0.18 U	0.18 U	0.26	0.18 U	0.18 U	0.16	0.21	0.18 U	0.18 U	0.18 U	0.18 U	0.18 U	0.18 U

**Table 3.
Summary of Analytical Results - Air Sampling for Large Retail Space
Former Gorham Manufacturing Site
Providence, Rhode Island**

Parameter (ug/m ³)	Indoor Air - Large Retail Space																
	IA-4-032610 3/26/2010	IA-4-043010 4/30/2010	IA-4-052810 5/28/2010	IA-4-070110 7/1/2010	IA-4-091610 9/16/2010	IA-4-120710 12/7/2010	IA-4-021711 2/17/2011	IA-4-060211 6/2/2011	IA-4-091511 9/15/2011	IA-4-120811 12/8/2011	IA-4-030812 3/8/2012	LRAIR01 5/15/2009	LRAIR02 5/15/2009	LRAIR03 5/15/2009	LRAIR04 5/15/2009	LRAIR05 5/15/2009	LRAIR06 5/15/2009
Ethylbenzene	0.22 U	0.25	0.25	0.29	0.44	0.22 U	0.49	0.22 U	0.22 U	0.16	0.17	0.22 U	0.22 U	0.22 U	0.22 U	0.22 U	0.22 U
Hexachlorobutadiene	1.1 U	0.53 U	0.53 U	0.53 U	0.53 U	0.53 U	0.53 U	0.53 U	0.53 U	0.32 U	0.32 U	1.1 U	1.1 U	1.1 U	1.1 U	1.1 U	1.1 U
Hexane	0.19	1.3	0.55	2.8	0.61	0.38	1.7	1	7.0 U	0.35	0.55	1.1	0.21	0.18 U	0.18	0.24	0.18 U
Isopropyl alcohol	0.66	3.4	4.4	1.8	8.3	0.48	1.7	1.2 U	4.9 U	2.9 U	2.9 U	3.3	3.4	3.7	3.5	3.6	3.4
m,p-Xylene	0.49	0.8	0.98	1.1	1.4	0.43 U	1.4	0.41 J	0.53	0.41	0.27	0.58	0.57	0.58	0.55	0.49	0.5
Methyl methacrylate						0.2 U	0.2 U	0.2 U	0.20 U	0.12 U	0.12 U						
Methylene chloride	0.7 U	0.7 U	0.35 U	7.7	0.68	0.79	5.1	3.2	1.7 U	1.5	2	5.9	1.5	1.5	1.6	1.9	1.6
Methyl-t-butyl ether	0.18 U	0.18 U	0.18 U	0.18 U	0.18 U	0.18 U	0.18 U	0.18 U	0.18 U	0.11 U	0.11 U	0.18 U	0.18 U	0.18 U	0.18 U	0.18 U	0.18 U
n-Heptane	0.2 U	0.2 U	0.2 U	0.22	0.32	0.2 U	0.51	0.2 U	0.20 U	0.071	0.12 U	0.2 U	0.2 U	0.2 U	0.2 U	0.2 U	0.2 U
o-Xylene	0.22 U	0.3	0.44	0.5	0.57	0.22 U	0.53	0.22 U	0.22 U	0.15	0.11	0.28	0.28	0.27	0.27	0.25	0.26
Propylene (Propene)	0.35 U	0.35 U	0.87 U	1.1	0.35 U	0.86 U	0.86 U	0.86 U	3.4 U	2.1 U	2.1 U	0.09 U	0.09 U	0.09 U	0.09 U	0.09 U	0.09 U
Styrene	0.21 U	0.21 U	0.22	0.29	0.21 U	0.21 U	0.21 U	0.21 U	0.21 U	0.077	0.092	0.23	0.21 U	0.21 U	0.22	0.21 U	0.21 U
Tetrachloroethene	0.34 U	4.4	0.44	1.1	0.34 U	3.4	5	0.34 U	0.45	1.2	0.31	0.47	0.47	0.54	0.66	0.64	0.6
Tetrahydrofuran	0.15 U	0.15 U	0.19	0.24	0.15 U	0.15 U	0.15 U	0.15 U	0.15 U	0.076	0.088 U	0.15 U	0.15 U	0.15 U	0.15 U	0.2	0.15 U
Toluene	0.83	1.4	0.98	1	2	0.43	2.7	0.56	0.95	1.6	0.32	0.73	0.7	0.58	0.59	0.51	0.53
trans-1,2-Dichloroethene	0.2 U	0.2 U	0.2 U	0.2 U	0.2 U	0.2 U	0.2 U	0.2 U	0.20 U	0.12 U	0.059 U	0.2 U	0.2 U	0.2 U	0.2 U	0.2 U	0.2 U
trans-1,3-Dichloropropene	0.22 U	0.22 U	0.22 U	0.22 U	0.22 U	0.23 U	0.23 U	0.23 U	0.23 U	0.14 U	0.068 U	0.22 U	0.22 U	0.22 U	0.22 U	0.22 U	0.22 U
Trichloroethene	0.27 U	1.4	0.27 U	0.44	0.27 U	1.8	0.27 U	0.27 U	0.27 U	0.35	0.15	0.27 U	0.28	0.27	0.29	0.34	0.27
Trichlorofluoromethane	1.5	1.3	1.3	1.9	2.4	1.2	1.8	1.4	1.8	1.3	0.87	1.3	1.3	1.2	1.1	1.4	1.3
Trichlorotrifluoroethane	1.3	0.48	0.51	0.59	0.43	0.54	0.7	0.71	0.52	0.71	0.44	0.63	0.6	0.65	0.62	0.64	0.57
Vinyl acetate	0.36 U	0.71 U	0.18 U	0.18 U	0.36 U	0.38	0.18 U	3.5 U	0.18 U	0.11 U	0.21 U	0.18 U	0.18 U	0.18 U	0.18 U	0.18 U	0.18 U
Vinyl chloride	0.13 U	0.13 U	0.13 U	0.13 U	0.13 U	0.16	0.13 U	0.13 U	0.13 U	0.077 U	0.038 U	0.13 U	0.13 U	0.13 U	0.13 U	0.13 U	0.13 U

**Table 3.
Summary of Analytical Results - Air Sampling for Large Retail Space
Former Gorham Manufacturing Site
Providence, Rhode Island**

Parameter (ug/m ³)	Indoor Air - Large Retail Space			
	LRAIR07 5/15/2009	LRAIR08 5/15/2009	LRAIR09 5/15/2009	LRAIR10 5/15/2009
1,1,1-Trichloroethane	0.69	0.5	0.49	0.53
1,1,2,2-Tetrachloroethane	0.34 U	0.34 U	0.34 U	0.34 U
1,1,2-Trichloroethane	0.27 U	0.27 U	0.27 U	0.27 U
1,1-Dichloroethane	0.2 U	0.2 U	0.2 U	0.2 U
1,1-Dichloroethene	0.2 U	0.2 U	0.2 U	0.2 U
1,2,4-Trichlorobenzene	0.37 U	0.37 U	0.37 U	0.37 U
1,2,4-Trimethylbenzene	0.25 U	0.25 U	0.25 U	0.25 U
1,2-Dibromoethane (EDB)	0.38 U	0.38 U	0.38 U	0.38 U
1,2-Dichlorobenzene	0.3 U	0.3 U	0.3 U	0.3 U
1,2-Dichloroethane	0.2 U	0.2 U	0.2 U	0.2 U
1,2-Dichloropropane	0.23 U	0.23 U	0.23 U	0.23 U
1,2-Dichlorotetrafluoroethane	0.35 U	0.35 U	0.35 U	0.35 U
1,3,5-Trimethylbenzene	0.25 U	0.25 U	0.25 U	0.25 U
1,3-Butadiene	0.11 U	0.11 U	0.11 U	0.11 U
1,3-Dichlorobenzene	0.3 U	0.3 U	0.3 U	0.3 U
1,4-Dichlorobenzene	0.3 U	0.3 U	0.3 U	0.3 U
1,4-Dioxane				
2-Butanone	3.1	2.5	2.6	1.4
2-Hexanone	0.61	0.48	0.43	0.29
4-Ethyltoluene	0.25 U	0.25 U	0.25 U	0.25 U
4-Methyl-2-pentanone	0.32	0.3	0.61	0.23
Acetone	13	11	9.8	6.9
Benzene	0.53	0.6	0.51	0.57
Benzyl chloride	0.26 U	0.26 U	0.26 U	0.26 U
Bromodichloromethane	0.33 U	0.33 U	0.33 U	0.33 U
Bromoform	0.51 U	0.51 U	0.51 U	0.51 U
Bromomethane	0.19 U	0.19 U	0.19 U	0.19 U
Carbon disulfide	0.16 U	0.16 U	0.16 U	0.16 U
Carbon tetrachloride	0.68	0.7	0.64	0.66
Chlorobenzene	0.23 U	0.23 U	0.23 U	0.23 U
Chloroethane	0.13 U	0.13 U	0.13 U	0.13 U
Chloroform	0.24 U	0.24 U	0.24 U	0.24 U
Chloromethane	0.92	1.1	0.91	1.2
cis-1,2-Dichloroethene	0.21	0.2 U	0.2 U	0.2 U
cis-1,3-Dichloropropene	0.22 U	0.22 U	0.22 U	0.22 U
Cyclohexane	0.17 U	0.17 U	0.17 U	0.17 U
Dibromochloromethane	0.43 U	0.43 U	0.43 U	0.43 U
Dichlorodifluoromethane	2.4	2.8	2.3	2.7
Ethanol	5.9	14	44	14
Ethyl acetate	0.18 U	0.18 U	0.18 U	0.18 U

**Table 3.
Summary of Analytical Results - Air Sampling for Large Retail Space
Former Gorham Manufacturing Site
Providence, Rhode Island**

Parameter (ug/m ³)	Indoor Air - Large Retail Space			
	LRAIR07 5/15/2009	LRAIR08 5/15/2009	LRAIR09 5/15/2009	LRAIR10 5/15/2009
Ethylbenzene	0.22 U	0.22 U	0.27	0.22 U
Hexachlorobutadiene	1.1 U	1.1 U	1.1 U	1.1 U
Hexane	0.19	0.21	0.2	0.18 U
Isopropyl alcohol	4.4	3.6	2.8	3.2
m,p-Xylene	0.48	0.53	1	0.5
Methyl methacrylate				
Methylene chloride	1.5	1.6	1.6	1.4
Methyl-t-butyl ether	0.18 U	0.18 U	0.18 U	0.18 U
n-Heptane	0.2 U	0.2 U	0.2 U	0.2 U
o-Xylene	0.25	0.27	0.34	0.26
Propylene (Propene)	0.09 U	0.09 U	0.09 U	0.09 U
Styrene	0.37	0.21 U	0.21 U	0.21 U
Tetrachloroethene	0.73	0.53	0.46	0.46
Tetrahydrofuran	0.15 U	0.15 U	0.15 U	0.15 U
Toluene	0.57	0.53	0.54	0.47
trans-1,2-Dichloroethene	0.2 U	0.2 U	0.2 U	0.2 U
trans-1,3-Dichloropropene	0.22 U	0.22 U	0.22 U	0.22 U
Trichloroethene	0.28	0.27 U	0.27 U	0.27 U
Trichlorofluoromethane	1.1	1.4	1	1.4
Trichlorotrifluoroethane	0.59	0.68	0.62	0.58
Vinyl acetate	0.18 U	0.18 U	0.18 U	0.18 U
Vinyl chloride	0.13 U	0.13 U	0.13 U	0.13 U

[a] Tetrachloroethene are above the target air concentration, but are not compliance violations as indoor air concentrations are consistent with outdoor air concentrations that were sampled on the same day.

NA - not available

U - Not detected, value is the detection limit

B - Compounds detected in method blank as well as field sample

D - Result from diluted analyses

ug/m³ - micrograms per cubic meter

Prepared by/Date: EYM 4/4/12

Checked by/Date: MAM 4/20/12

5 Bolded and shaded values are above the CT target indoor air concentration for industrial/commercial scenarios

**Table 4.
Vacuum Monitoring Results - Large Retail Space
Former Gorham Manufacturing Site
Providence, Rhode Island**

Date	Pressure Differential (inches of water)			
	VMW-1	VMW-2	VMW-3	VMW-4
2/3/2009	-0.20	-0.62	-0.15	-0.12
2/18/2009	-0.509	-0.738	-0.650	-0.253
2/26/2009	-0.511	-0.710	-0.665	-0.273
3/6/2009	-0.507	-0.610	-0.715	-0.251
3/6/2009*	-0.120	-0.195	-0.230	-0.028
3/31/2009	-0.148	-0.221	-0.244	-0.072
4/14/2009	-0.140	-0.210	-0.215	-0.081
5/15/2009	-0.133	-0.193	-0.208	-0.087
9/17/2009	-0.132	-0.172	-0.209	-0.087
9/24/2009	-0.146	-0.189	-0.254	-0.094
10/1/2009	-0.181	-0.232	-0.233	-0.097
10/8/2009	-0.197	-0.212	-0.255	-0.087
12/29/2009**	-0.021	-0.020	-0.160	-0.023
1/28/2010	-0.947	-0.642	-0.709	-0.237
2/5/2010	-0.497	-0.714	-0.510	-0.258
2/12/2010	-0.509	-0.706	-0.537	-0.261
2/19/2010	-0.526	-0.733	-0.667	-0.242
3/26/2010	-0.636	-0.860	-0.671	-0.331
4/30/2010	-0.519	-0.713	-0.378	-0.287
5/28/2010	-0.546	-0.727	+1.371	-0.279
7/1/2010	-0.505	-0.678	+1.568	-0.272
9/16/2010	-0.496	-0.654	+0.980	-0.272
12/7/2010	-0.126	-0.202	-0.155	-0.052
2/17/2011	-0.491	-0.683	-0.737	-0.263
6/2/2011	-0.561	-0.767	-0.393	-0.290
9/15/2011	-0.517	-0.710	+1.071	-0.260
12/8/2011	-0.609	-0.826	+1.502	-0.313
3/8/2012	-0.422	-0.680	+0.329	-0.288

* vacuum reduced at extraction wells

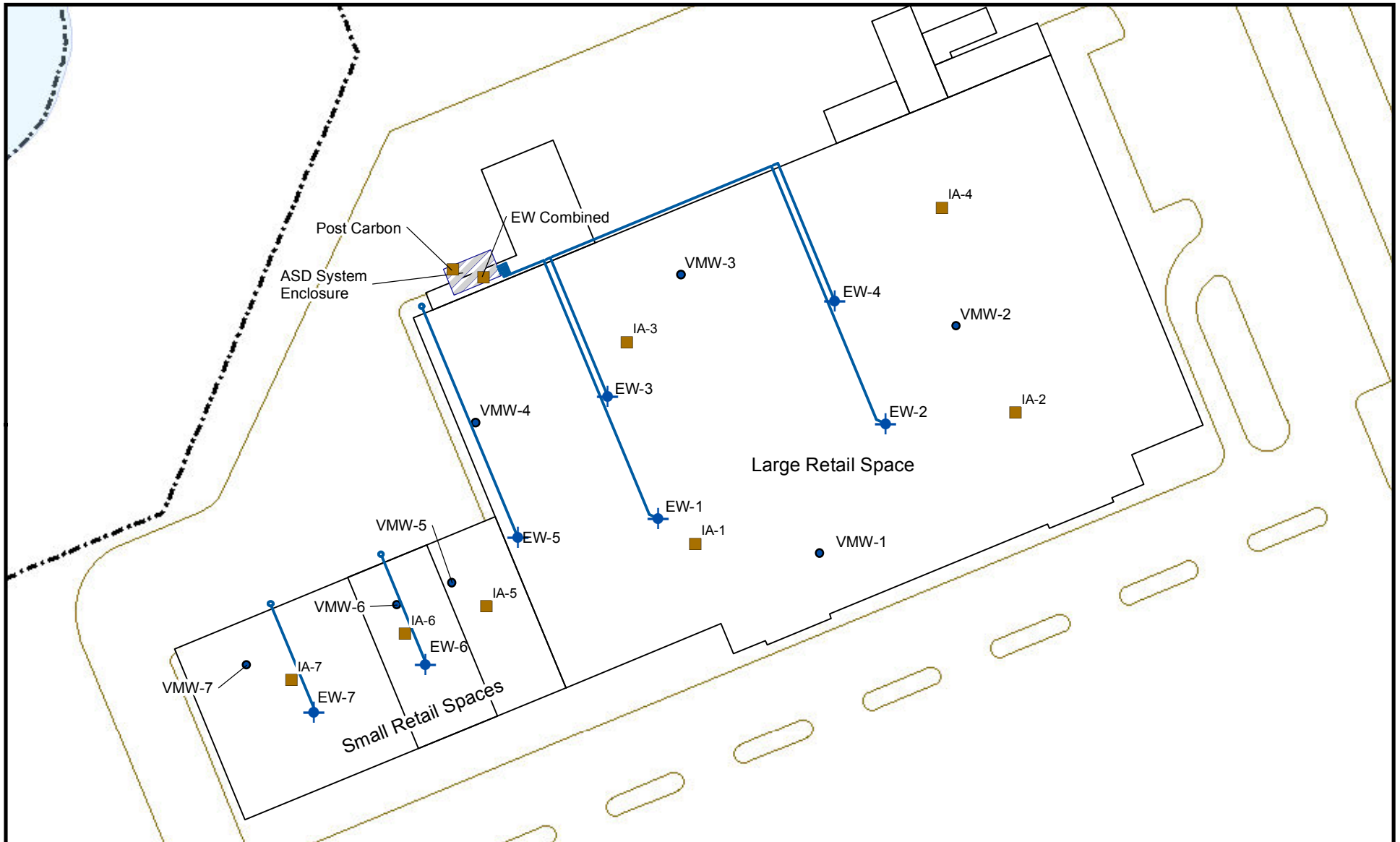
** ASD system offline

Prepared by/Date: MAM 04/05/12

Checked by/Date: EYM 4/20/12

Textron, Inc.
Former Gorham Manufacturing Facility, Providence, RI
Retail Complex, Active Sub-Slab Depressurization System
Air Monitoring Report, First Quarter, 2012

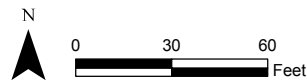
FIGURES



All locations are approximate

Legend

- Air Sample Location
- Vacuum Monitoring Well
- ◆ Extraction Well
- Extraction Well Piping
- Current Building
- Pavement Outline
- Effluent Location



Prepared/Date: BJR 08/01/11 | Checked/Date: PJM 08/01/11

Figure 1
Vapor Mitigation
Sample Locations

Former Gorham Manufacturing Facility
333 Adelaide Avenue
Providence, Rhode Island

Textron, Inc.
Former Gorham Manufacturing Facility, Providence, RI
Retail Complex, Active Sub-Slab Depressurization System
Air Monitoring Report, First Quarter, 2012

APPENDIX A

Laboratory Reports

Textron, Inc.
Former Gorham Manufacturing Facility, Providence, RI
Retail Complex, Active Sub-Slab Depressurization System
Air Monitoring Report, First Quarter, 2012

APPENDIX B

Analytical Laboratory Detection Limits



39 Spruce Street, 2nd Floor
 East Longmeadow, MA 01028
 413.525.2332
 413.525.6405 (fax)

Analyte:

TO-14 / TO-15	PPBv	UG/M3	PPBv	UG/M3	MW NIST	UG/M3	PPBv
1,1,1-Trichloroethane	ND	ND	0.050	0.27	133.40	1	0.18
1,1,2,2-Tetrachloroethane	ND	ND	0.050	0.34	167.85	1	0.15
1,1,2-Trichloroethane	ND	ND	0.050	0.27	133.40	1	0.18
1,1,2-Trichlorotrifluoroethane (freon 113)	ND	ND	0.050	0.38	187.37	1	0.13
1,1-Dichloroethane	ND	ND	0.050	0.20	98.96	1	0.25
1,1-Dichloroethene	ND	ND	0.050	0.20	96.94	1	0.25
1,2,4-Trichlorobenzene	ND	ND	0.050	0.37	181.45	1	0.13
1,2,4-Trimethylbenzene	ND	ND	0.050	0.25	120.19	1	0.20
1,2-Dibromoethane	ND	ND	0.050	0.38	187.86	1	0.13
1,2-Dichlorobenzene	ND	ND	0.050	0.30	147.00	1	0.17
1,2-Dichloroethane	ND	ND	0.050	0.20	98.96	1	0.25
1,2-Dichloropropane	ND	ND	0.050	0.23	112.99	1	0.22
1,2-Dichlorotetrafluoroethane (freon 114)	ND	ND	0.050	0.35	170.92	1	0.14
1,3 - Butadiene	ND	ND	0.050	0.11	54.09	1	0.45
1,3,5-Trimethylbenzene	ND	ND	0.050	0.25	120.19	1	0.20
1,3-Dichlorobenzene	ND	ND	0.050	0.30	147.00	1	0.17
1,4-Dichlorobenzene	ND	ND	0.050	0.30	147.00	1	0.17
1,4-Dioxane	ND	ND	0.050	0.18	88.11	1	0.28
2-Butanone (MEK)	ND	ND	0.050	0.15	72.11	1	0.34
2-Hexanone (MBK)	ND	ND	0.050	0.20	100.16	1	0.24
4-Ethyltoluene	ND	ND	0.050	0.25	120.19	1	0.20
4-Methyl-2-pentanone(MIBK)	ND	ND	0.050	0.20	100.16	1	0.24
Acetone	ND	ND	0.050	0.12	58.08	1	0.42
Acrolein	ND	ND	0.050	0.11	56.06	1	0.44
Benzene	ND	ND	0.050	0.16	78.11	1	0.31
Benzyl Chloride	ND	ND	0.050	0.26	126.58	1	0.19
Bromodichloromethane	ND	ND	0.050	0.34	163.83	1	0.15
Bromoform	ND	ND	0.050	0.52	252.73	1	0.10
Bromomethane	ND	ND	0.050	0.19	94.94	1	0.26
Carbon Disulfide	ND	ND	0.050	0.16	76.14	1	0.32
Carbon Tetrachloride	ND	ND	0.050	0.31	153.82	1	0.16



39 Spruce Street, 2nd Floor
 East Longmeadow, MA 01028
 413.525.2332
 413.525.6405 (fax)

Chlorobenzene	ND	ND	0.050	0.23	112.56	1	0.22
Chloroethane	ND	ND	0.050	0.13	64.51	1	0.38
Chloroform	ND	ND	0.050	0.24	119.38	1	0.20
Chloromethane	ND	ND	0.050	0.10	50.49	1	0.48
cis-1,2-Dichloroethene	ND	ND	0.050	0.20	96.94	1	0.25
cis-1,3-Dichloropropene	ND	ND	0.050	0.23	110.97	1	0.22
Cyclohexane	ND	ND	0.050	0.17	84.16	1	0.29
Dibromochloromethane	ND	ND	0.050	0.43	208.28	1	0.12
Dichlorodifluoromethane (freon 12)	ND	ND	0.050	0.25	120.91	1	0.20
Ethanol	ND	ND	0.050	0.09	46.07	1	0.53
Ethyl Acetate	ND	ND	0.050	0.18	88.11	1	0.28
Ethylbenzene	ND	ND	0.050	0.22	106.17	1	0.23
Heptane	ND	ND	0.050	0.20	100.20	1	0.24
Hexachlorobutadiene	ND	ND	0.050	0.53	260.76	1	0.09
Hexane	ND	ND	0.050	0.18	86.18	1	0.28
Isopropyl Alcohol	ND	ND	0.050	0.12	60.10	1	0.41
M/P Xylenes	ND	ND	0.050	0.22	106.17	1	0.23
Methylene Chloride	ND	ND	0.050	0.17	84.93	1	0.29
Methylmethacrylate	ND	ND	0.050	0.20	100.12	1	0.24
MTBE	ND	ND	0.050	0.18	88.15	1	0.28
O-Xylene	ND	ND	0.050	0.22	106.17	1	0.23
Propene	ND	ND	0.050	0.09	42.08	1	0.58
Styrene	ND	ND	0.050	0.21	104.15	1	0.23
Tetrachloroethene	ND	ND	0.050	0.34	165.83	1	0.15
Tetrahydrofuran	ND	ND	0.050	0.15	72.11	1	0.34
Toluene	ND	ND	0.050	0.19	92.14	1	0.27
trans-1,2-Dichloroethene	ND	ND	0.050	0.20	96.94	1	0.25
trans-1,3-Dichloropropene	ND	ND	0.050	0.23	110.97	1	0.22
Trichloroethene	ND	ND	0.050	0.27	131.39	1	0.19
Trichlorofluoromethane (freon 11)	ND	ND	0.050	0.28	137.37	1	0.18
Vinyl Acetate	ND	ND	0.050	0.18	86.09	1	0.28
Vinyl Chloride	ND	ND	0.050	0.13	62.50	1	0.39



39 Spruce Street, 2nd Floor
 East Longmeadow, MA 01028
 413.525.2332
 413.525.6405 (fax)

APH COMPOUNDS

1,2,3-Trimethylbenzene	ND	ND	0.94	4.62	120.19	1	0.20
1,3 Butadiene	ND	ND	0.94	2.08	54.09	1	0.45
1,3,5-Trimethylbenzene	ND	ND	0.94	4.62	120.19	1	0.20
1-Ethyl-3-Methylbenzene	ND	ND	0.94	4.62	120.19	1	0.20
1-Methylnaphthalene	ND	ND	0.94	5.47	142.20	1	0.17
2,3-Dimethylheptane	ND	ND	0.94	4.93	128.26	1	0.19
2,3-Dimethylpentane	ND	ND	0.94	3.85	100.20	1	0.24
2-Methylnaphthalene	ND	ND	0.94	5.47	142.20	1	0.17
Benzene	ND	ND	0.94	3.00	78.11	1	0.31
Butyl Cyclohexane	ND	ND	0.94	5.39	140.27	1	0.17
Cyclohexane	ND	ND	0.94	3.24	84.16	1	0.29
Decane	ND	ND	0.94	5.47	142.28	1	0.17
Dodecane	ND	ND	0.94	6.55	170.33	1	0.14
Ethylbenzene	ND	ND	0.94	4.08	106.17	1	0.23
Heptane	ND	ND	0.94	3.85	100.20	1	0.24
Hexane	ND	ND	0.94	3.31	86.18	1	0.28
Hexyl Cyclohexane	ND	ND	0.94	6.47	168.32	1	0.15
Indene	ND	ND	0.94	4.47	116.16	1	0.21
Isopentane	ND	ND	0.94	2.77	72.15	1	0.34
Isopropylbenzene(Cumene)	ND	ND	0.94	4.62	120.19	1	0.20
m/p -Xylenes	ND	ND	0.94	4.08	106.17	1	0.23
Methyl-tert-butylether	ND	ND	0.94	3.39	88.15	1	0.28
Naphthalene	ND	ND	0.94	4.93	128.17	1	0.19
Nonane	ND	ND	0.94	4.93	128.26	1	0.19
Octane	ND	ND	0.94	4.39	114.23	1	0.21
o-Xylene	ND	ND	0.94	4.08	106.17	1	0.23
P-Iso-Propyl Toluene	ND	ND	0.94	5.16	134.22	1	0.18
Toluene	ND	ND	0.94	3.54	92.14	1	0.27
Toluene-D8	ND	ND	0.94	3.85	100.19	1	0.24
Undecane	ND	ND	0.94	6.01	156.31	1	0.16



39 Spruce Street, 2nd Floor
East Longmeadow, MA 01028
413.525.2332
413.525.6405 (fax)

EXTRA COMPOUNDS

1,1,1,2-tetrachloroethane	ND	ND	0.091	0.6247	167.85	1	0.15
1,2-Dibromo-3-chloropropane	ND	ND	0.065	0.6283	236.33	1	0.10
1,3-Dichloropropane	ND	ND	0.135	0.6238	112.99	1	0.22
1-Methylnaphthalene	ND	ND	0.107	0.6223	142.20	1	0.17
2,2,4-Trimethylpentane	ND	ND	0.134	0.6260	114.23	1	0.21
2-Methylnaphthalene	ND	ND	0.107	0.6223	142.20	1	0.17
Acrylonitrile	ND	ND	0.288	0.6250	53.06	1	0.46
Butylbenzene	ND	ND	0.114	0.6258	134.22	1	0.18
Cumene	ND	ND	0.127	0.6243	120.19	1	0.20
Hexylcyclohexane	ND	ND	0.091	0.6265	168.32	1	0.15
Indane	ND	ND	0.129	0.6235	118.18	1	0.21
Indene	ND	ND	0.132	0.6271	116.16	1	0.21
Methyl Acetate	ND	ND	0.206	0.6241	74.08	1	0.33
Methylcyclohexane	ND	ND	0.156	0.6265	98.19	1	0.25
Naphthalene	ND	ND	0.119	0.6238	128.17	1	0.19
P-cymene	ND	ND	0.114	0.6258	134.22	1	0.18
Propylbenzene	ND	ND	0.127	0.6243	120.19	1	0.20
Sec-butylbenzene	ND	ND	0.114	0.6258	134.22	1	0.18
Tert-butylbenzene	ND	ND	0.114	0.6258	134.22	1	0.18
Thiophene	ND	ND	0.182	0.6263	84.14	1	0.29

OTHER COMPOUNDS

2-Chloro-pyridine	ND	ND	0.20	0.93	113.54	1	0.22
2,6-Dichloro-pyridine	ND	ND	0.20	1.19	144.97	1	0.17
tert-Butyl Alcohol	ND	ND	0.20	0.61	74.10	1	0.33