













ID	Location and Description	Response Strategy	Implementation
<p><b>PX-04-01</b></p> 	<p><b>Warwick</b> a.) Belmont Park West Lat. 41°45'47.32"N Lon. 71°25'22.29"W b.) Belmont Park East Lat. 41°45'42.81"N Lon. 71°25'12.40"W <b>Cranston</b> c.) Pawtuxet Rvr Trail – Lat. 41°46'3.70"N Lon. 71°24'16.47"W</p>	<p><b>Divert and Collect – Shoreside</b> Divert incoming oil to shoreside recovery locations to protect downstream areas along the Pawtuxet River.</p>	<p>Deploy anchors and boom with skiffs.</p> <p>For (a) Deploy 200 ft. of 12” – 18” boom in a single leg at the proper angle to divert incoming oil to the collection site.</p> <p>For (b) Deploy 150 ft. of 12” – 18” boom in a single leg at the proper angle to divert incoming oil to the collection site. Small skiffs can be trailered to these deployment sites and can be hand-launched from the shoreline</p> <p>For (c) Deploy 250 ft. of 12” – 18” boom in a single leg at the proper angle to divert incoming oil to the collection site.</p> <p>For (c) deployment is best conducted shore-to-shore as water depth restricts or prohibits use of small boats.</p>
<p><b>PX-04-02</b></p> 	<p><b>Warwick</b> Cranberry Brook – Lat. 41°45'41.75"N Lon. 71°25'12.38"W</p>	<p><b>Culvert Blocking</b> Place culvert block and/or set exclusion boom to prevent oil from migrating into Cranberry Brook south of Belmont Park and/or prevent oil from migrating into the Pawtuxet River from the wetland area.</p>	<p>Install culvert block or set up exclusion boom along river bank. If inflatable plugs are not available, place plywood or similar sheeting material across the entrance of the culvert. Use plastic sheeting to ensure the seal. Stack adequate sandbags against the plywood sheeting to counter the outflow pressure.</p> <p>Monitor the block to ensure blocking integrity. Consider deploying exclusion boom if culvert blocking not feasible.</p>
<p><b>PX-04</b></p> 	<p>Same as PX-04-01</p>	<p><b>Shoreside Recovery -</b> Remove spilled oil that has been diverted to the designated recovery site accessible from shore.</p>	<p>Deploy skimming system(s) appropriate for the operating environment and temporary oil storage system in designated location.</p> <p>Oil spill contractor resources will be required to implement Shoreside Recovery tactics.</p>





**Pawtuxet River Geographic Response Plan**  
Warwick Ave PX-04



Response Resources	Staging Area Site Access	Resources Protected	Special Considerations	ID
<p><b>Deployment</b> <i>Equipment</i> 600 ft. 12"-18" boom 3 anchor sets* 12 anchor stakes** 3 shoreside recovery systems</p> <p><i>Vessels</i> 1 work boat or skiff</p> <p><i>Personnel/Shift</i> 2 vessel crew (per vessel)/2 shoreside responders</p> <p><b>Tending</b> <i>Vessels</i> 1 work boat or skiff</p> <p><i>Personnel/Shift</i> 2 vessel crew (per vessel)/2 shoreside responders</p> <p>*Anchor at end of each boom section and every 200 ft. ** Use two anchor stakes at end of each boom section</p>	<p>Staging Area: Belmont Park, 55 1<sup>st</sup> Ave., Warwick, RI</p> <p>Pawtuxet River Trail Parking Area, 2 Dartmoor Ave., Cranston, RI</p> <p><i>For (a) and (b): Access to these deployment sites may be difficult due to shoreline vegetation. Seasonal brush clearing may be required.</i></p>	<p>Cultural Resources – Historical Site</p> <p>Human use - Critical Infrastructure, Park, Railroad</p> <p>Land Management – Conservation Area, Residential</p> <p>Shoreline Habitat - Wetlands</p>	<p>River conditions including flow rate and flood stage vary depending on time of year and heavy rain and/or snowfall. Survey site prior to deployment and modify deployment tactics and techniques as appropriate based on observed river conditions. If ice is present GRP tactics and strategies must be reevaluated. Vessel operators should have local knowledge and experience operating in riverine environments. Entire site surveyed: 04/24/18</p> <p>Field tested: No</p>	<p><b>PX-04-01</b></p> <p></p>
<p><b>Deployment (Per Culvert)</b> <i>Transport</i> 1 Truck</p> <p><i>Equipment</i> 1 inflatable culvert block or 1 sheet of plywood 50-100 sandbags Polyethylene sheeting</p> <p><i>Personnel/Shift</i> 4 shoreside responders</p>	<p>Staging Area and Site Access: Belmont Park, 55 1<sup>st</sup> Ave., Warwick, RI</p>	<p>Same as PX-04-01</p>	<p>Same as PX-04-01</p>	<p><b>PX-04-02</b></p> <p></p>
<p><b>Deployment</b> <i>Equipment (All sites)</i> 1 shoreside recovery system</p> <p><i>Vehicles</i> 1 truck or truck with trailer</p> <p><i>Personnel/Shift*</i> 2-5 shoreside responders (depending on recovery system and hours of operation)</p>	<p>Same as PX-04-01</p>	<p>Same as PX-04-01</p>	<p>Same as PX-04-01</p>	<p><b>PX-04</b></p> <p></p>





**Site Photographs and Contact Information**



Access to site of DV-01a



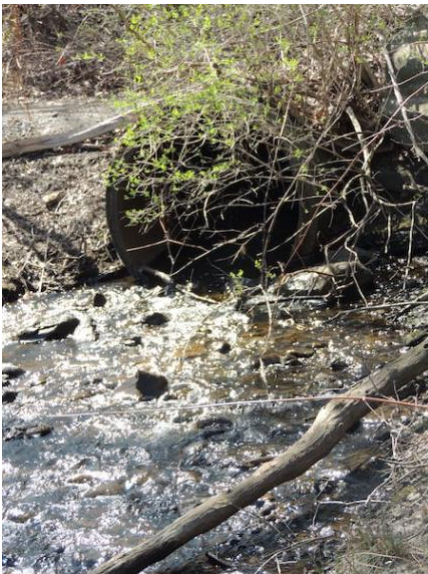
Site of DV-01b looking upriver



Site of DV-01b looking upriver



Site of DV-01c at Warwick Ave. bridge looking upriver



Culvert leading to Pawtuxet River Wetland area

**CONTACT INFORMATION:**

Cranston FD: 401-461-5000  
Cranston Public Works: 401-780-3245  
Cranston Parks & Recreation: 401-780-6149  
Pawtuxet River Authority: 401-615-7030  
Warwick FD: 401-468-4000  
Warwick Public Works: 401-738-2003  
Warwick Water Division: 401-738-2008  
Warwick Public Works: 401-738-2008  
**RI DEM Emergency Response: 401-222-1360 (day)**  
**RI DEM Emergency Response: 401-222-3070 (after hours)**  
RI DEM Water Resources: 401-222-3961 (day)  
RI DEM Freshwater Fish & Wildlife: 401-789-0281 (day)  
RI Historical Pres. & Heritage Comm.: 401-222-2678  
RI Emergency Management Agency: 401-946-9996  
**National Response Center: 800-424-8802**

Pawtuxet River GRPs have been incorporated into EPA Region One's Inland Area Contingency Plan (ACP) and is available at the following website: [https://nrtqa.ert.org/site/doc\\_list.aspx?site\\_id=38](https://nrtqa.ert.org/site/doc_list.aspx?site_id=38) or accessed via QR reader-enabled smartphones by scanning the QR code at right.

