

Emerald Ash Borer (EAB) Making Treatment or Removal Decisions

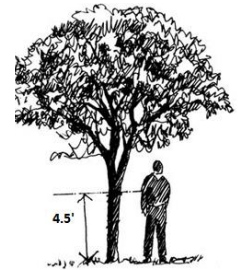
Trees can be **treated** if the trees are:

1. valuable to the owner
2. important to the landscape
3. healthy and vigorous, with over 1/2 their leaves
4. showing few external signs of EAB infestation



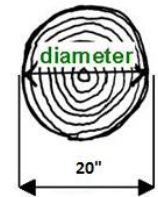
Treatment for trees $\leq 20''$ diameter

- Homeowners can treat with commercially available products
- Soil drench using products with 1.47% imidacloprid, most effective when applied in the spring, and according to the label



Treatment for trees $> 20''$ diameter

- Certified arborists with a pesticide applicators license can treat with professional products
- Use specialized equipment to apply emamectin benzoate
- Wider treatment timing window
- Longer residual window
- Find arborists at www.treesaregood.com



Trees should be **removed** if the trees are:

1. unhealthy with less than 1/2 their leaves
2. showing external signs of EAB infestation: woodpecker damage, bark splits, water sprouts at the base of the tree
3. planted in poor sites or not important to the landscape



NOTE: While chemical treatments can be effective in protecting un-infested trees, or trees having minor signs of infestation, subsequent treatments are necessary few years. Proper tree maintenance and avoidance of drought and other stressors are recommended.

Planting new or replacement trees

There are many different native trees in Rhode Island so finding a tree is easy, but make sure it is suited for the planting site:

- mature size
- moisture, soil and light requirements
- streets, parks, lawns, natural areas all vary in site conditions



For more information, see these websites:

Official EAB website: www.emeraldashborer.info

Other ash borers: <https://ohioline.osu.edu/factsheet/ent-77>

USDA APHIS: www.aphis.usda.gov/plant-pests-diseases/eab

USDA National Invasive Species: www.invasivespeciesinfo.gov/terrestrial/invertebrates/emerald-ash-borer

Don't Move Firewood: <http://www.dontmovefirewood.org>



EMERALD ASH BORER (EAB)

What to do if EAB has been confirmed in your county or within 15 miles of your location.

Inventory

How many ash trees do you have?
Where are they located?

Whether you are a homeowner or a community, follow these steps to decide your course of action.

- Value to owner or landscape?
- Healthy and few signs of EAB?
- Good location?

Are the ash trees worth saving?

YES

How big around is your tree – is the diameter (DBH) greater than 20”?

YES

Ask a certified arborist

I DON'T KNOW

NO

DBH – 4.5' above the ground, measure around trunk; divide by 3

Homeowner can treat trees (follow directions)

Do you want to save your trees?

YES

NO

NO

The trees will die and must be removed

It may be cheaper to remove the trees before they die

Hire a professional arborist*

Whether removing or treating a tree:

- Get more than one estimate
- Ask to see references, proof of insurance and their pesticide license
- Ask questions

* *Arborists in RI must be licensed by the state, ask to see a copy of their license.*

A list of businesses with RI licensed arborists is on [URI Rhode Island Woods](#).

To find an arborist also certified by the International Society of Arboriculture go to: www.treesaregood.com