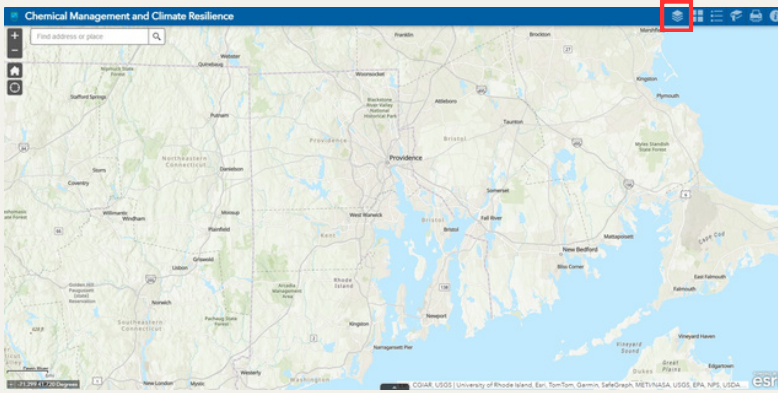
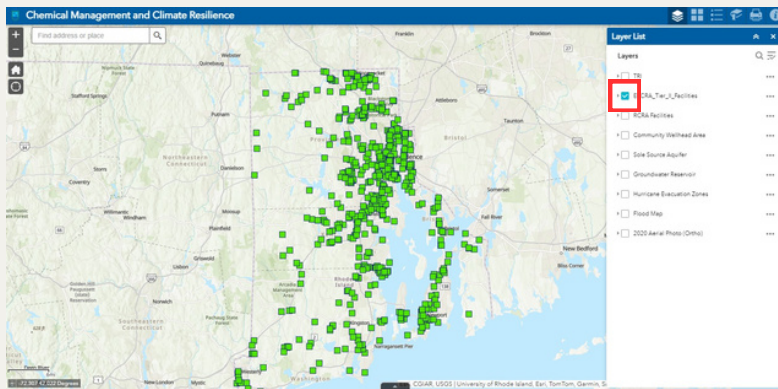


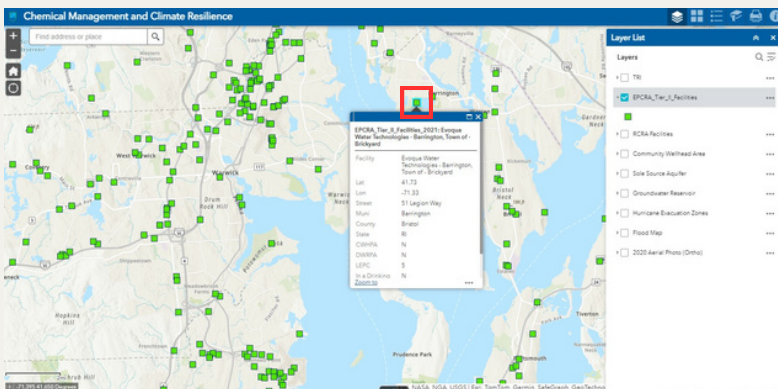
Chemical Management and Climate Resilience Map Instructions



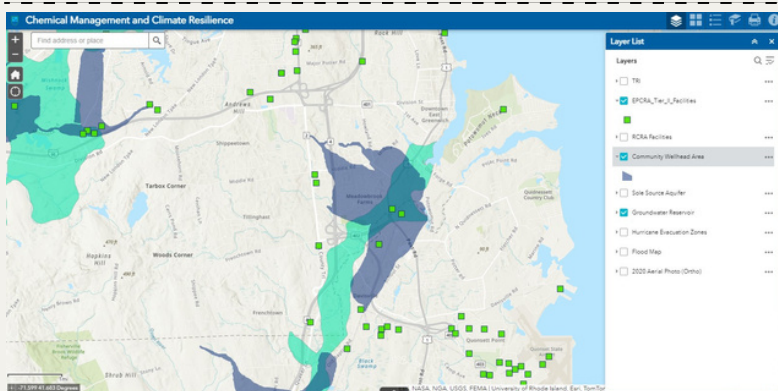
In order to view the different layers on the map 'click' on the layers icon located in the right hand corner of the screen. After you 'click' on the layers box a drop down should appear with the listed layers.



To add a layer on the map, 'click' on the associated box. When you 'click' on the box a check mark should appear as well as the layer on the map.



To view more information regarding a data point 'click' on the point (will appear as a colored shape) and an information box will appear.



Multiple layers can be added in order to compare and see if layers overlap with one another.