

Shellfish Advisory Panel
September 5, 2018, 4:30PM
URI Bay Campus, Large Conference Room
215 S Ferry Road, Narragansett, RI 02882

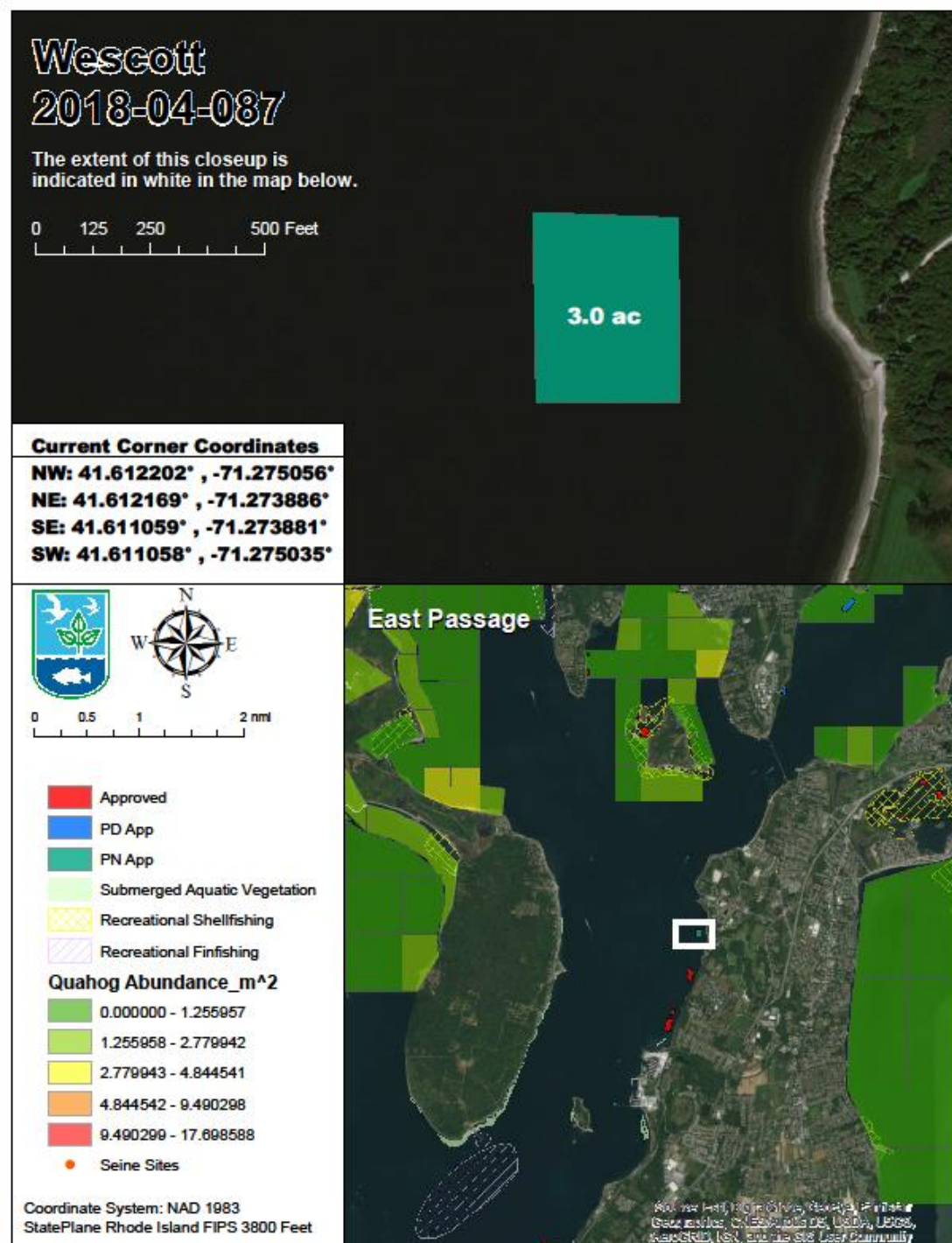
AGENDA

1. Review of Aquaculture Applications sent to Public Notice
 - a. 2018-04-087, Wescott, Portsmouth (East Passage)
2. Discussions on Winter Harvest Schedule for Shellfish Management Areas

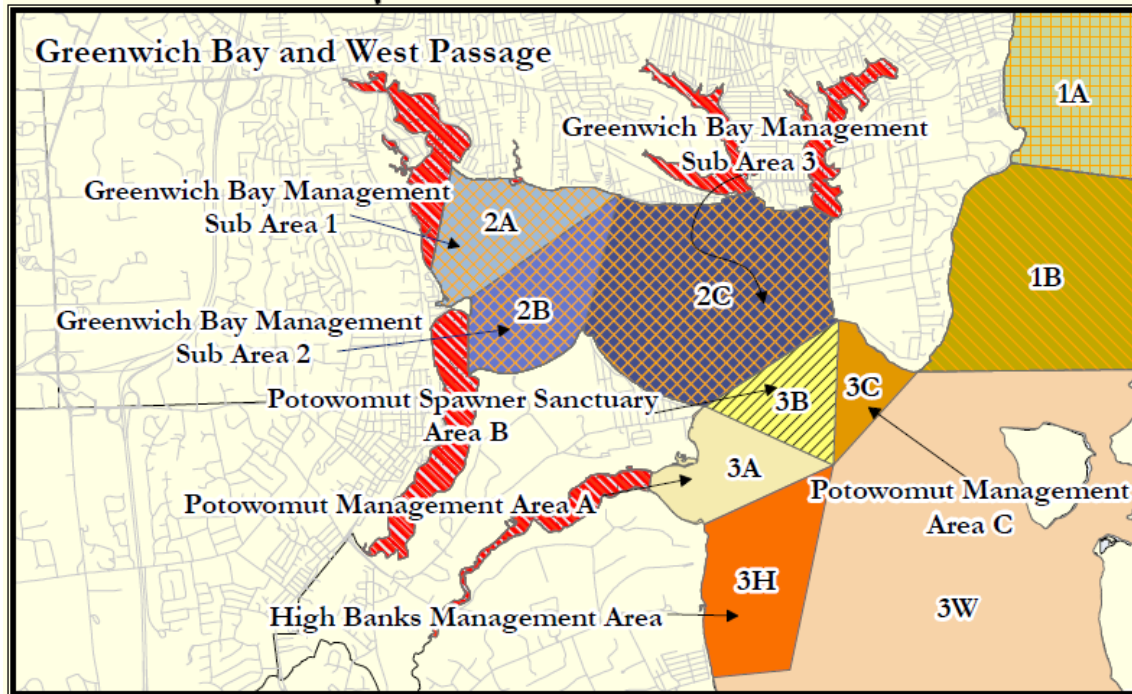
1. Aquaculture Leases

2018-04-087, John Wescott – East Passage

- 3 acre lease for oysters and kelp.
- Farm in Portsmouth, RI.
- Includes bottom cages for oysters and suspended longlines for sugar kelp.
 - 10-20 trawl lines with 12-15 cages per line for oysters
 - 5-10 longlines for kelp



2. Discussions on Winter Harvest Schedule for Shellfish Management Areas: Greenwich Bay Areas 1 and 2



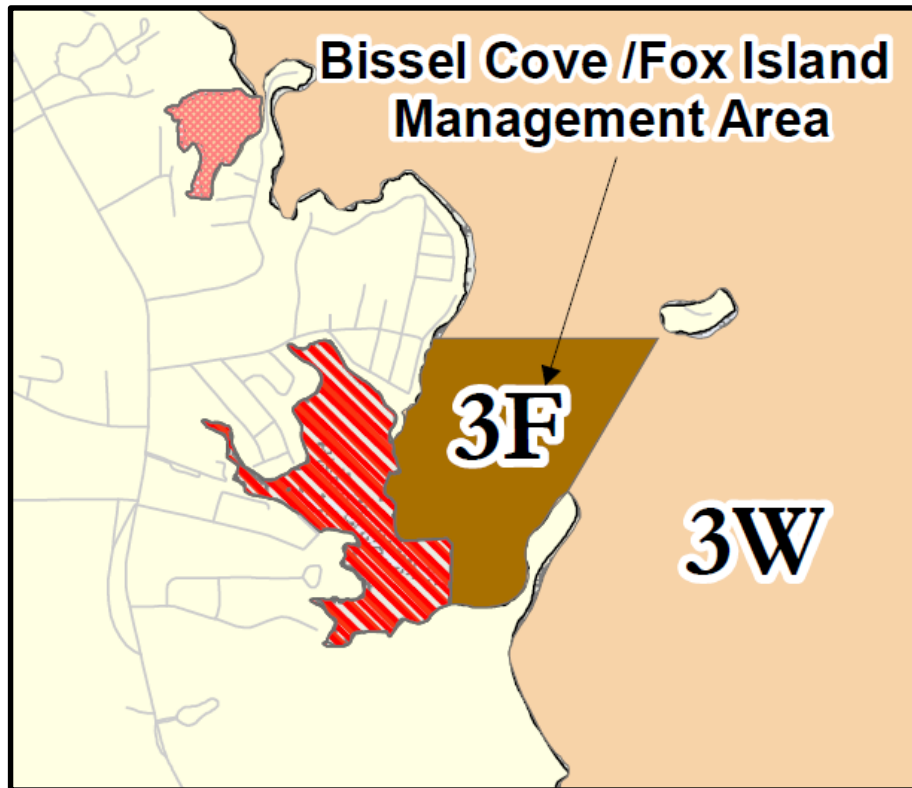
Provisions for Proposal

The schedule for the month of December may include up to 48 hours of permitted shellfishing, spread over any number of days during the month, excluding December 25.

Default

Open 8:00A.M. to 12:00P.M. noon on Mondays, Wednesdays, and Fridays, beginning on the second Wednesday of December and continuing through the last Friday in April, excluding December 25 and January 1 annually.

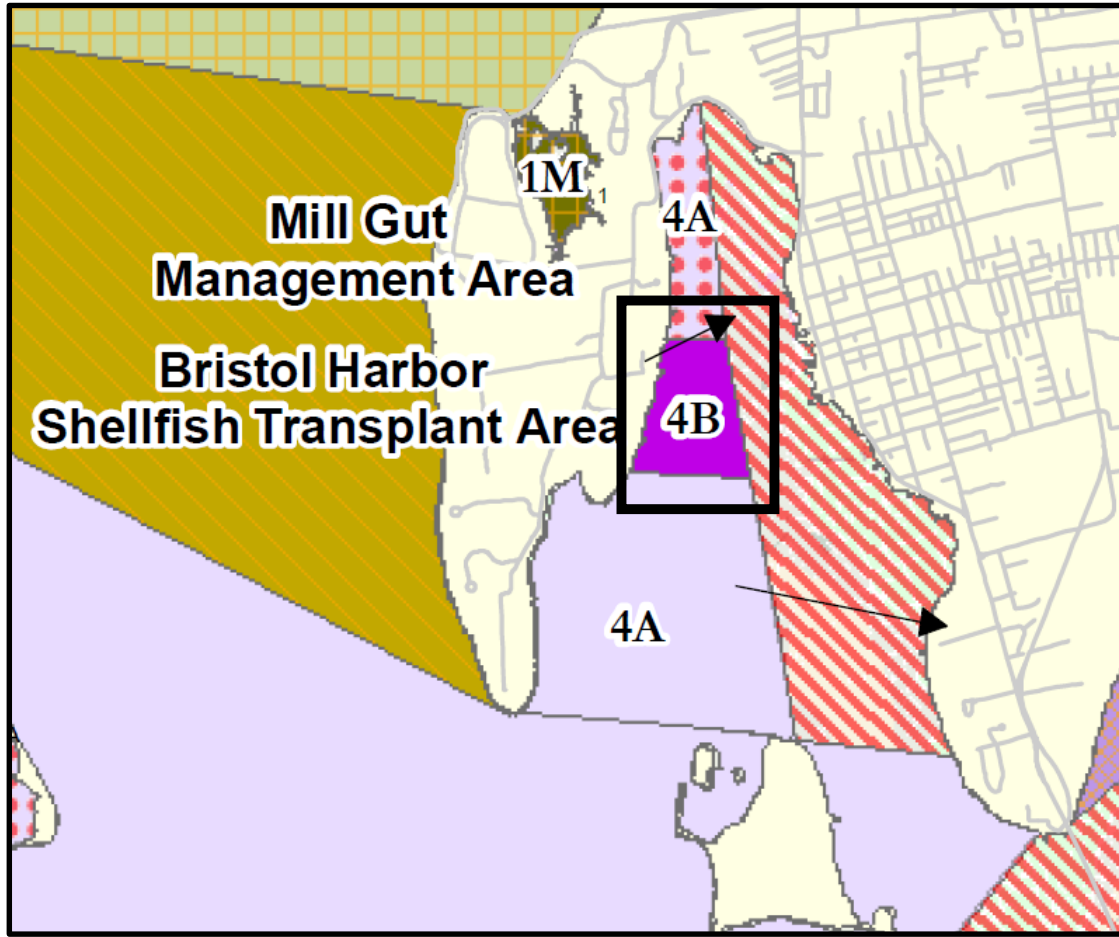
2. Discussions on Winter Harvest Schedule for Shellfish Management Areas: Greenwich Bay Areas 1 and 2



Default

Open 8:00A.M. to 12:00P.M. noon on Mondays, Wednesdays, and Fridays, beginning on the second Wednesday of December and continuing through the end of April, excluding December 25 and January 1 annually.

2. Discussions on Winter Harvest Schedule for Shellfish Management Areas: Greenwich Bay Areas 1 and 2



Default

Open 8:00A.M. to 12:00P.M.
noon on Mondays,
Wednesdays, and Fridays,
beginning on the second
Wednesday of December and
continuing through the end of
April, excluding December 25
and January 1 annually.