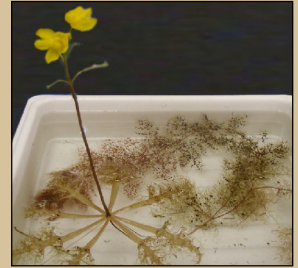


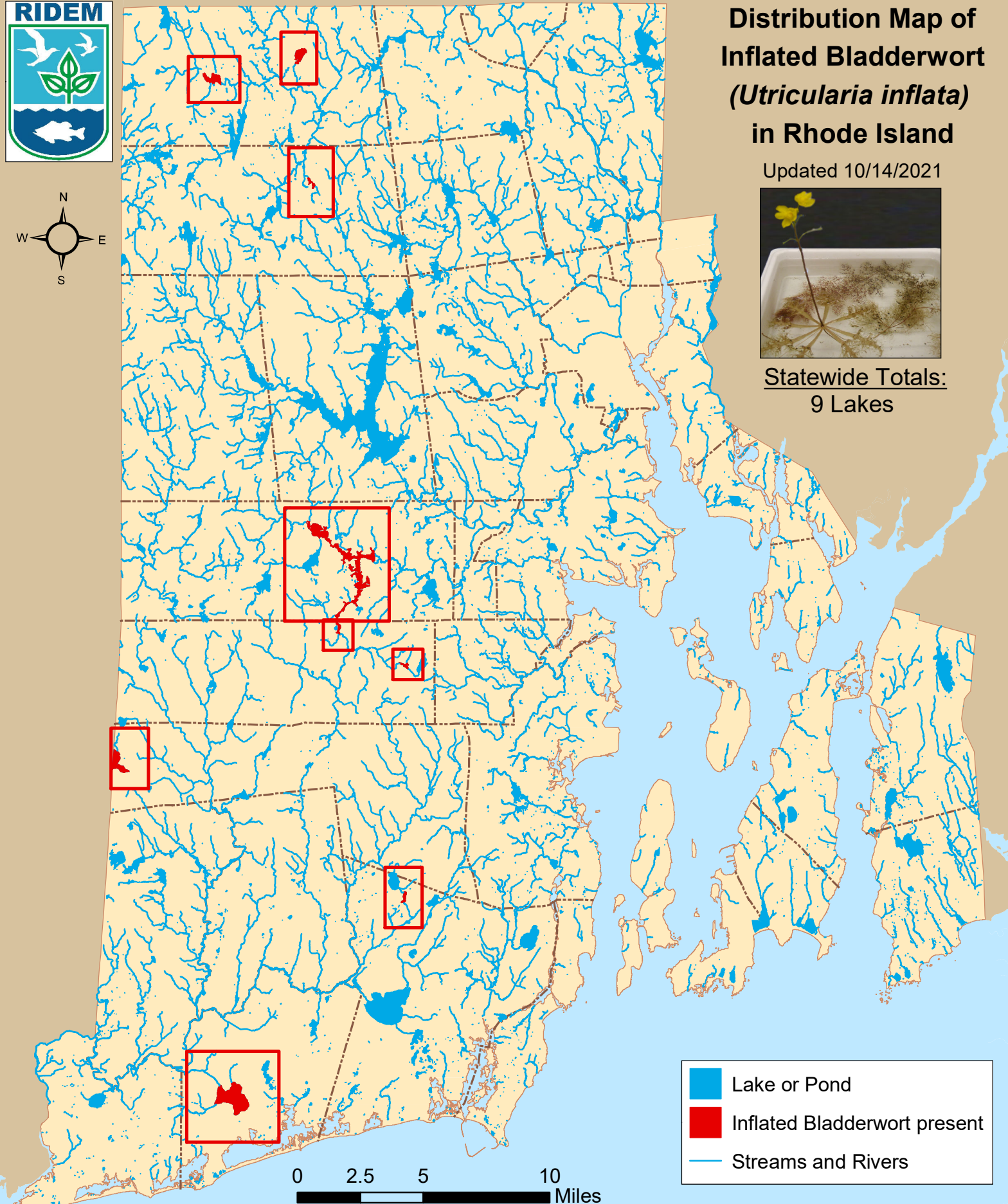


Distribution Map of Inflated Bladderwort (*Utricularia inflata*) in Rhode Island

Updated 10/14/2021



Statewide Totals:
9 Lakes



- Lake or Pond
- Inflated Bladderwort present
- Streams and Rivers

Note: Documentation based on surveys performed 2007-2021 by Rhode Island Department of Environmental Management (RIDEM) Office of Water Resources. AIS refers only to those plant species present in the floating and submergent plant communities. More information available online: <http://www.dem.ri.gov/programs/water/quality/surface-water/aisplant.php>



Distribution of inflated bladderwort (*U. inflata*) in RI

river segments listed first alphabetically; then lakes listed by city or town

<u>Town</u>	<u>Waterbody Name</u>	<u>First documented</u>	<u>Last Surveyed</u>
<u>Burrillville</u>			
1	Spring Lake (Herring Pond)	6/3/2010	6/8/2018
2	Wilson Reservoir	6/15/2012	8/26/2020
<u>Charlestown</u>			
3	Watchaug Pond	8/31/2012	6/2/2016
<u>Coventry</u>			
4	Flat River Reservoir (Johnson Pond)	7/18/2012	9/21/2018
<u>Exeter</u>			
5	Beach Pond	6/19/2019	6/19/2019
<u>Glocester</u>			
6	Spring Grove Pond	6/1/2016	6/8/2018
<u>South Kingstown</u>			
7	Barber Pond	6/2/2016	7/27/2017
<u>West Greenwich</u>			
8	Reynolds Pond	8/25/2021	8/25/2021
9	Tarbox Pond	5/22/2021	5/22/2021