

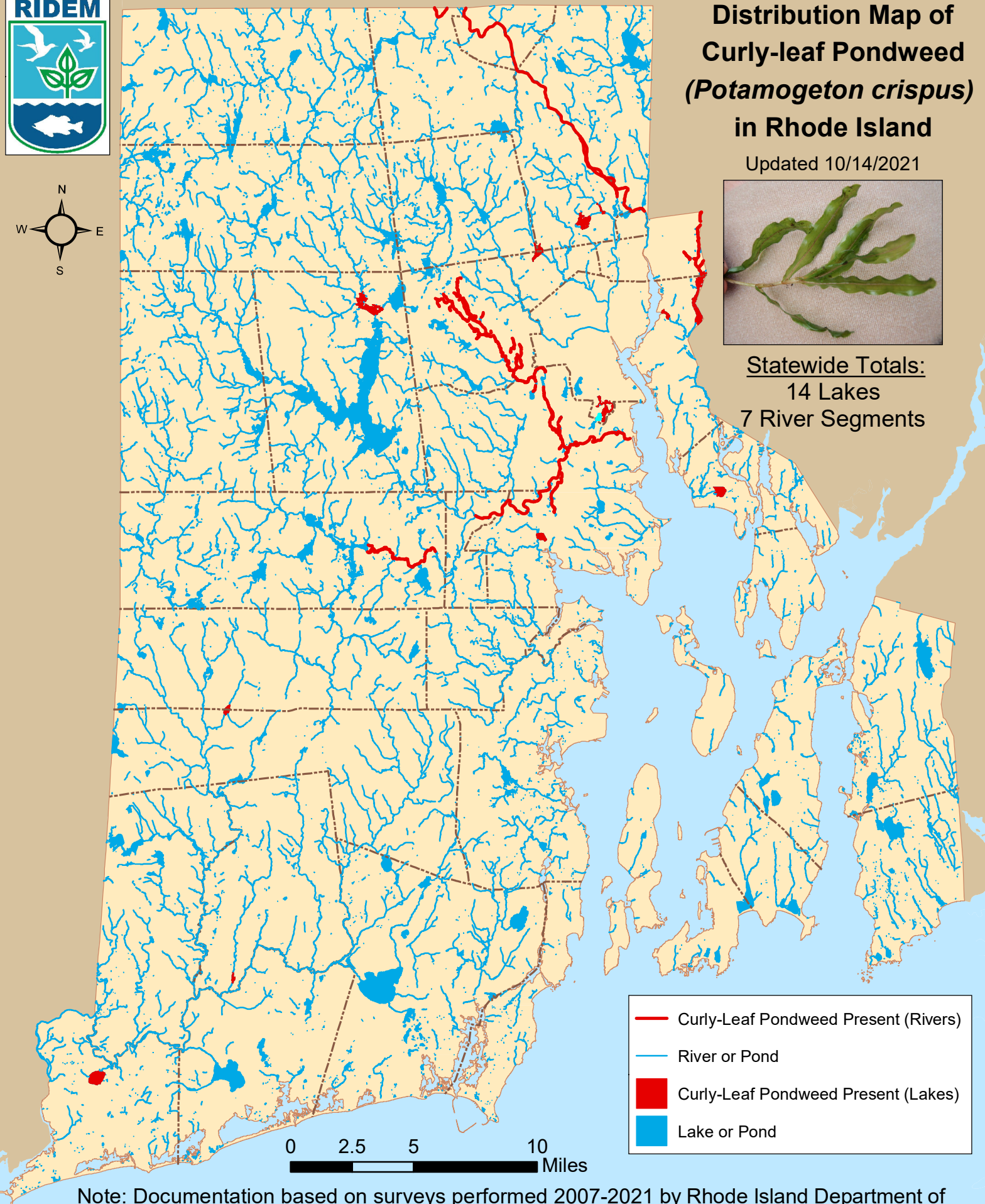


Distribution Map of Curly-leaf Pondweed (*Potamogeton crispus*) in Rhode Island

Updated 10/14/2021



Statewide Totals:
14 Lakes
7 River Segments



- Curly-Leaf Pondweed Present (Rivers)
- River or Pond
- Curly-Leaf Pondweed Present (Lakes)
- Lake or Pond

Note: Documentation based on surveys performed 2007-2021 by Rhode Island Department of Environmental Management (RIDEM) Office of Water Resources. AIS refers only to those plant species present in the floating and submergent plant communities. More information available online: <http://www.dem.ri.gov/programs/water/quality/surface-water/aisplant.php>



Distribution of curly-leaf pondweed (*P. crispus*) in RI

river segments listed first alphabetically; then lakes listed by city or town

<u>Town</u>	<u>Waterbody Name</u>	<u>First documented</u>	<u>Last Surveyed</u>
<u>RIVERS</u>			
1	Blackstone River (Seg A)	8/13/2010	6/24/2021
2	Pawtuxet River (Main Stem)	8/11/2009	9/9/2020
3	Pawtuxet River (South Branch Seg A)	7/30/2012	6/27/2018
4	Pocasset River & Tribs (Seg A)	7/1/2019	7/1/2019
5	Pocasset River & Tribs (Seg B)	9/5/2018	9/5/2018
6	Ten Mile River & Tribs (Seg A)	7/3/2009	6/5/2021
7	Three Pond Brook	6/19/2012	6/19/2012
<u>Barrington</u>			
8	Brickyard Pond	9/10/2007	9/14/2020
<u>Cranston</u>			
9	Blackamore Pond	7/25/2017	7/25/2017
<u>East Providence</u>			
10	Central Pond	9/30/2009	8/13/2020
11	Omega Pond	6/10/2021	6/10/2021
12	Turner Reservoir	6/9/2010	5/27/2021
<u>Exeter</u>			
13	Breakheart Pond	8/19/2020	8/19/2020
<u>Lincoln</u>			
14	Barney Pond	9/30/2009	6/4/2021
15	Olney Pond	5/27/2010	6/23/2021
<u>North Providence</u>			
16	Wenscott Reservoir (Twin Rivers)	6/10/2009	8/3/2020



Distribution of curly-leaf pondweed (*P. crispus*) in RI

river segments listed first alphabetically; then lakes listed by city or town

<u>Town</u>	<u>Waterbody Name</u>	<u>First documented</u>	<u>Last Surveyed</u>
<u>Providence</u>			
17	Roger Williams Park Ponds	4/26/2010	7/3/2020
<u>Richmond</u>			
18	Meadowbrook Pond (Sandy Pond)	8/21/2017	8/21/2017
<u>Scituate</u>			
19	Regulating Reservoir	7/11/2012	7/11/2012
<u>Warwick</u>			
20	Gorton Pond	6/5/2015	9/9/2020
<u>Westerly</u>			
21	Chapman Pond	7/9/2012	6/1/2021