

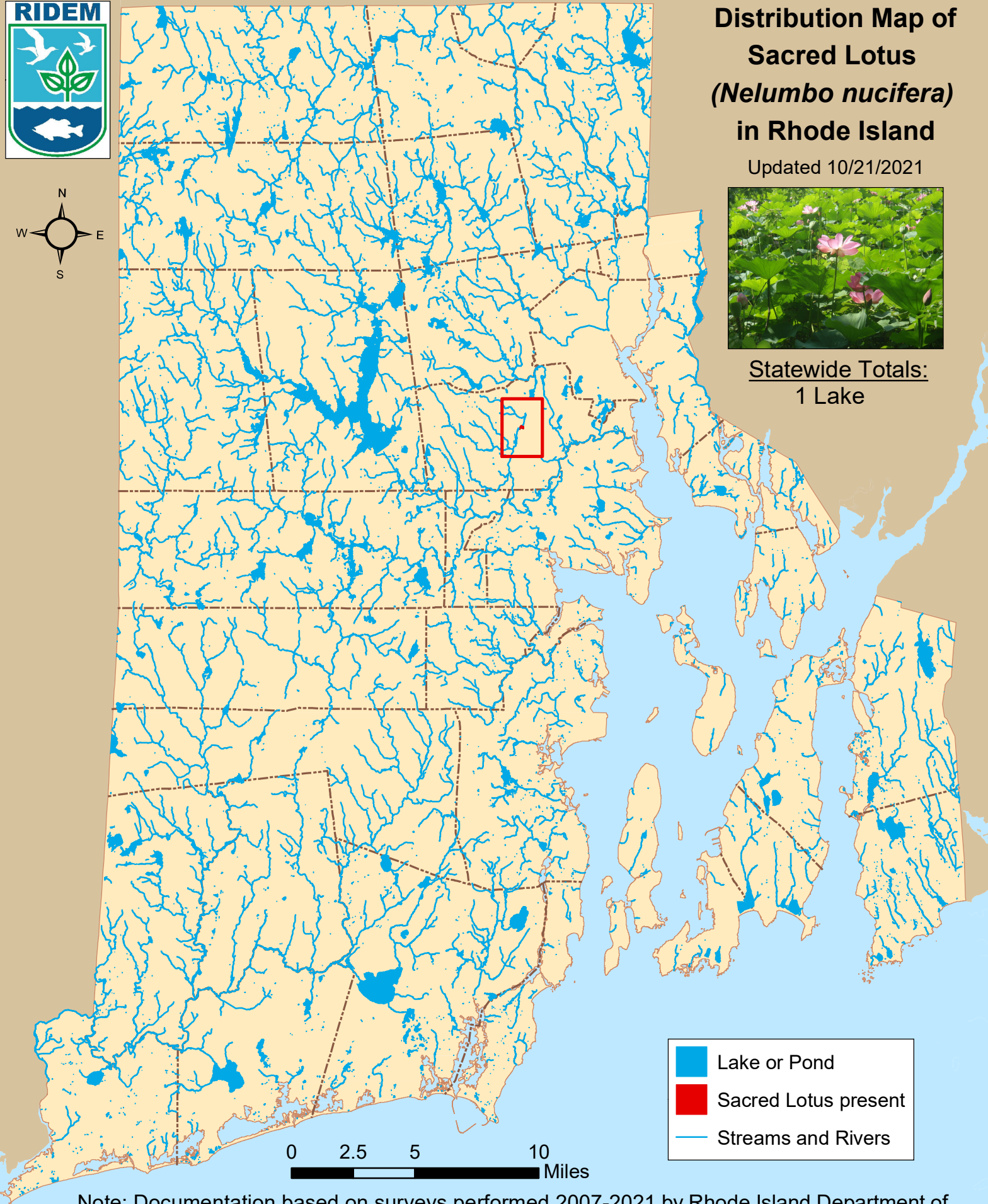


Distribution Map of Sacred Lotus (*Nelumbo nucifera*) in Rhode Island

Updated 10/21/2021



Statewide Totals:
1 Lake



Note: Documentation based on surveys performed 2007-2021 by Rhode Island Department of Environmental Management (RIDEM) Office of Water Resources. AIS refers only to those plant species present in the floating and submergent plant communities. More information available online: <http://www.dem.ri.gov/programs/water/quality/surface-water/aisplant.php>



Distribution of sacred lotus (*Nelumbo nucifera*) in RI

river segments listed first alphabetically; then lakes listed by city or town

<u>Town</u>	<u>Waterbody Name</u>	<u>First documented</u>	<u>Last Surveyed</u>
--------------------	------------------------------	--------------------------------	-----------------------------

Cranston

1

Meshanticut Pond

7/27/2018

8/20/2021