

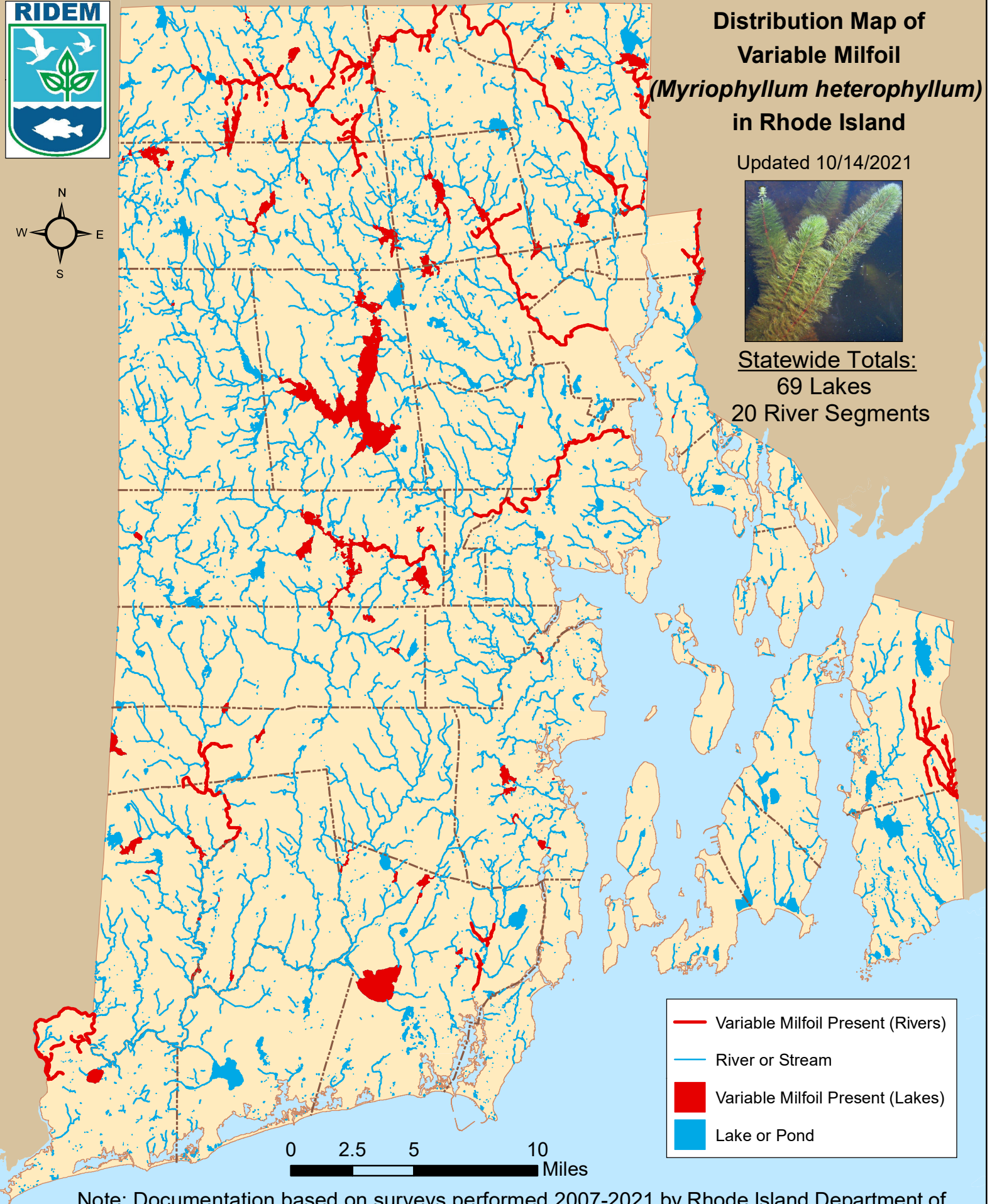


# Distribution Map of Variable Milfoil (*Myriophyllum heterophyllum*) in Rhode Island

Updated 10/14/2021



Statewide Totals:  
69 Lakes  
20 River Segments



- Variable Milfoil Present (Rivers)
- River or Stream
- Variable Milfoil Present (Lakes)
- Lake or Pond

Note: Documentation based on surveys performed 2007-2021 by Rhode Island Department of Environmental Management (RIDEM) Office of Water Resources. AIS refers only to those plant species present in the floating and submergent plant communities. More information available online: <http://www.dem.ri.gov/programs/water/quality/surface-water/aisplant.php>



## Distribution of variable milfoil (*M. heterophyllum*) in RI

river segments listed first alphabetically; then lakes listed by city or town

<u>Town</u>	<u>Waterbody Name</u>	<u>First documented</u>	<u>Last Surveyed</u>
<u>RIVERS</u>			
1	Abbott Run Brook North & Tribs	5/13/2009	7/7/2009
2	Adamsville Brook & Tribs	9/7/2012	9/7/2012
3	Blackstone River (Seg A)	7/22/2009	6/24/2021
4	Branch River & Tribs (Seg A)	7/15/2009	7/20/2009
5	Branch River & Tribs (Seg B)	7/15/2009	7/15/2009
6	Clear River & Tribs (Seg C)	8/1/2007	8/15/2018
7	Clear River (Seg D)	8/1/2007	8/1/2007
8	Pawcatuck River & Tribs	8/6/2009	9/8/2020
9	Pawtuxet River (Main Stem)	6/28/2010	9/9/2020
10	Pawtuxet River (South Branch Seg A)	6/27/2018	6/27/2018
11	Saugatucket River & Tribs	7/20/2010	7/20/2010
12	Tarkiln Brook & Tribs (Seg A)	7/20/2009	7/20/2009
13	Tarkiln Brook & Tribs (Seg B)	5/20/2009	7/20/2009
14	Ten Mile River & Tribs (Seg A)	8/10/2007	6/5/2021
15	Wood River & Tribs (Seg A)	7/9/2009	7/10/2009
16	Wood River (Seg B)	9/30/2008	8/16/2012
17	Woonasquatucket River & Tribs (Seg B)	6/1/2009	6/28/2019
18	Woonasquatucket River & Tribs (Seg C)	6/1/2009	6/4/2019
19	Woonasquatucket River (Seg D)	6/17/2009	6/28/2019

### Burrillville



## Distribution of variable milfoil (*M. heterophyllum*) in RI

river segments listed first alphabetically; then lakes listed by city or town

<u>Town</u>	<u>Waterbody Name</u>	<u>First documented</u>	<u>Last Surveyed</u>
<u>Burrillville</u>			
20	Echo Lake (Pascoag Reservoir)	9/12/2008	9/13/2012
21	Round Top State Pond	6/11/2010	6/26/2019
22	Spring Lake (Herring Pond)	6/3/2010	6/8/2018
23	Sucker Pond	8/20/2018	8/20/2018
<u>Central Falls</u>			
24	Valley Falls Pond	8/9/2017	8/9/2017
<u>Coventry</u>			
25	Carbuncle Pond	6/15/2009	8/31/2020
26	Coventry Reservoir (Stump Pond)	9/4/2008	7/27/2016
27	Flat River Reservoir (Johnson Pond)	8/22/2008	9/21/2018
28	Tiogue Lake	9/5/2007	9/9/2020
29	Upper Dam Pond	8/28/2020	8/28/2020
<u>Cranston</u>			
30	Meshanticut Pond	8/6/2018	8/20/2021
<u>Cumberland</u>			
31	Arnold Mills Reservoir (Pawtucket Reservoir)	6/24/2011	6/24/2011
32	Carls Pond	9/1/2020	6/8/2021
33	Happy Hollow Pond	8/18/2010	8/18/2010
34	Robin Hollow Pond	8/18/2010	8/18/2010
35	Sneech Pond	6/3/2010	9/24/2018
36	Sylvn's Pond (Sylvn's Brook Pond)	8/7/2014	10/4/2017



## Distribution of variable milfoil (*M. heterophyllum*) in RI

river segments listed first alphabetically; then lakes listed by city or town

<u>Town</u>	<u>Waterbody Name</u>	<u>First documented</u>	<u>Last Surveyed</u>
<u>East Providence</u>			
37	Central Pond	9/30/2009	8/13/2020
38	Willet Pond	9/11/2012	9/17/2020
<u>Exeter</u>			
39	Beach Pond	6/19/2019	6/19/2019
40	Boone Lake	8/25/2011	8/25/2011
41	Breakheart Pond	9/5/2007	8/19/2020
<u>Foster</u>			
42	Shippee Saw Mill Pond	9/26/2007	8/15/2017
<u>Glocester</u>			
43	Bowdish Reservoir	9/25/2007	6/15/2018
44	Clarksville Pond	6/30/2010	8/24/2018
45	Hawkins Pond (Glocester)	9/28/2016	9/28/2016
46	Keech Pond	9/26/2007	8/1/2017
47	Lake Washington	8/2/2007	6/10/2019
48	Sawmill Pond	6/30/2010	9/5/2018
49	Smith & Sayles Reservoir	9/26/2007	8/30/2021
50	Spring Grove Pond	10/5/2009	6/8/2018
51	Waterman Reservoir	7/17/2009	7/27/2016
<u>Hopkinton</u>			
52	Alton Pond	9/5/2007	6/7/2018
53	Ashville Pond	9/5/2007	7/5/2019
54			



## Distribution of variable milfoil (*M. heterophyllum*) in RI

river segments listed first alphabetically; then lakes listed by city or town

<u>Town</u>	<u>Waterbody Name</u>	<u>First documented</u>	<u>Last Surveyed</u>
<u>Hopkinton</u>			
54	Locustville Pond	9/3/2008	9/9/2020
55	Wincheck Pond	6/2/2011	6/2/2011
56	Wyoming Pond	9/30/2008	9/11/2017
<u>Johnston, Smithfield</u>			
57	Slack Reservoir	7/13/2009	10/19/2011
<u>Lincoln</u>			
58	Olney Pond	5/27/2010	6/23/2021
<u>North Kingstown</u>			
59	Belleville Ponds	9/10/2007	5/25/2021
60	Carr Pond (N. Kingstown)	9/28/2009	6/16/2016
61	Mill Pond (NK)	8/2/2018	8/2/2018
62	Potowomut Pond	8/29/2008	8/17/2021
63	Secret Lake	7/3/2009	6/18/2010
64	Silver Spring Lake	8/27/2009	8/16/2017
<u>North Providence</u>			
65	Wenscott Reservoir (Twin Rivers)	6/10/2009	8/3/2020
<u>North Smithfield</u>			
66	Slatersville Reservoir	9/25/2007	7/20/2017
67	Tarkiln Pond	6/25/2009	8/30/2018
<u>Richmond</u>			
68	Carolina Trout Pond	7/9/2009	8/28/2017
69	Meadowbrook Pond (Sandy Pond)	10/6/2009	8/21/2017



## Distribution of variable milfoil (*M. heterophyllum*) in RI

river segments listed first alphabetically; then lakes listed by city or town

<u>Town</u>	<u>Waterbody Name</u>	<u>First documented</u>	<u>Last Surveyed</u>
<u>Scituate</u>			
70	Peeptoad Pond	8/23/2012	8/23/2012
71	Regulating Reservoir	6/17/2010	7/11/2012
72	Scituate Reservoir	8/2/2011	8/3/2011
<u>Smithfield</u>			
73	Georgiaville Pond	8/7/2007	6/28/2019
74	Hawkins Pond	6/23/2015	9/14/2018
75	Woonasquatucket Reservoir (Stump Pond)	7/13/2009	7/31/2018
<u>South Kingstown</u>			
76	Asa Pond	7/2/2019	7/2/2019
77	Barber Pond	8/29/2007	7/27/2017
78	Glen Rock Reservoir	7/1/2010	9/6/2018
79	Hundred Acre Pond	9/3/2009	9/3/2009
80	Peace Dale Reservoir	7/12/2012	8/10/2017
81	Rocky Brook Reservoir	6/14/2010	8/2/2018
82	Thirty Acre Pond	9/3/2009	9/3/2009
83	Worden Pond	10/2/2009	10/2/2009
<u>West Greenwich</u>			
84	Mishnock Lake	9/4/2008	8/27/2018
85	Reynolds Pond	9/5/2007	8/25/2021
86	Tarbox Pond	9/5/2007	5/22/2021
<u>Westerly</u>			
87			



## Distribution of variable milfoil (*M. heterophyllum*) in RI

river segments listed first alphabetically; then lakes listed by city or town

<u>Town</u>	<u>Waterbody Name</u>	<u>First documented</u>	<u>Last Surveyed</u>
<u>Westerly</u>			
87	Chapman Pond	7/14/2020	6/1/2021
<u>Woonsocket</u>			
88	Sylvestre Pond	5/27/2015	7/29/2021