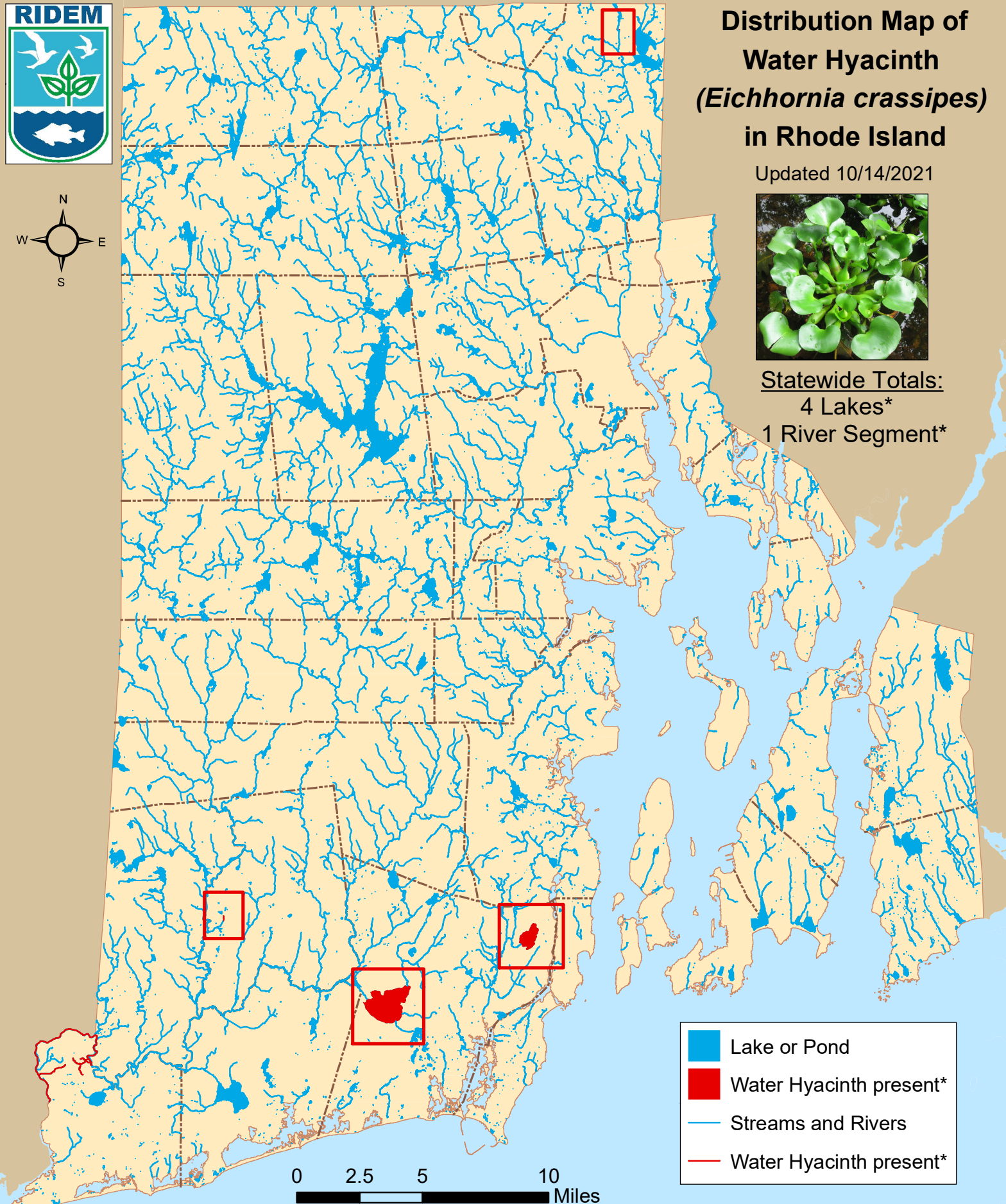


# Distribution Map of Water Hyacinth (*Eichhornia crassipes*) in Rhode Island

Updated 10/14/2021



Statewide Totals:  
4 Lakes\*  
1 River Segment\*



Note: Documentation based on surveys performed 2007-2021 by Rhode Island Department of Environmental Management (RIDEM) Office of Water Resources.

\*Water hyacinth was observed only once during a RIDEM survey, and has not yet shown to overwinter in RI. More information available online: <http://www.dem.ri.gov/programs/water/quality/surface-water/aisplant.php>





## Distribution of water hyacinth (*E. crassipes*) in RI

river segments listed first alphabetically; then lakes listed by city or town

<u>Town</u>	<u>Waterbody Name</u>	<u>First documented</u>	<u>Last Surveyed</u>
<u>RIVERS</u>			
1	Pawcatuck River & Tribs	9/6/2012	9/8/2020
<u>Cumberland</u>			
2	Sylvn's Pond (Sylvn's Brook Pond)	8/7/2014	10/4/2017
<u>Richmond</u>			
3	Carolina Trout Pond	10/7/2008	8/28/2017
<u>South Kingstown</u>			
4	Indian Lake	7/29/2009	8/10/2018
5	Worden Pond	9/4/2009	10/2/2009

\*Note: water hyacinth was found only on date first documented, and has not been found to overwinter yet in Rhode Island\*