



Proactive by Design

GEOTECHNICAL
ENVIRONMENTAL
ECOLOGICAL
WATER
CONSTRUCTION
MANAGEMENT



MEMORANDUM

To: Joseph Martella, RIDEM

From: Dave Rusczyk, GZA

Cc: Kenneth Lento, National Grid

Date: March 8, 2022

Re: Site Response Action Report
Period February 20, 2022 through March 5, 2022
Former Tidewater Facility
Pawtucket, Rhode Island
RIDEM Case No. 95-022 / Site Remediation File No. SR-26-0934

SITE ACTIVITIES PERFORMED

- Charter Contracting Company, LLC (Charter) continued activities related to implementation of the remedial construction work. These activities included:
 - Continued processing of excavated materials generated in the northern portion of the Site to 6-inch minus for reuse as fill beneath the engineered cap.
 - Continued regrading of the ground surface in the northern portion of the Site in preparation for installation of the engineered cap as weather conditions permitted.
 - Continued installation of the revetment cap above the Mean High-Water elevation in the northern portion of the Site.
 - Initial installation of a railing system on the top of the bulkhead portion of the containment wall.
 - Completion of the installation of the engineered cap on the slope directly north of the natural gas regulator station.
- Perimeter air monitoring was performed during the period covered by this report with 11 air monitoring stations (4 solar powered units located proximate to the river and 7 electrically powered units). These stations measured and recorded respirable dust and total volatile organic compounds (TVOC) concentrations continuously 24 hours per day/7 days per week with the exception of the following periods:
 - The batteries within Stations 3 and 4 failed over the President's Day holiday weekend (2/19/22 through 2/21/22) and were replaced on Tuesday, February 22, 2022.
 - The batteries within Stations 2, 3, and 4 failed over the weekend of February 26 and 27, 2022 and were replaced on Monday, February 28, 2022.

As indicated in the attached weekly perimeter air monitoring graphs, no exceedances of the total volatile organic compound (0.5 ppmv) or respirable dust ($150 \mu\text{g}/\text{m}^3$) perimeter threshold levels were noted during the period covered by this report.



- GZA collected ambient air samples from upwind and downwind locations on February 24, 2022 and March 3, 2022 for laboratory analysis for benzene, toluene, ethylbenzene, xylenes, and naphthalene. The analytical results from these samples indicated there were no exceedances of the project action levels. The analytical results were posted to the project website and the bulletin boards at the ends of Tidewater Street and Bowles Court and are also attached to this report.

ANTICIPATED SITE ACTIVITIES TO BE PERFORMED WITHIN NEXT 2 WEEKS

- Continued processing of on-Site materials to 6-inch minus for reuse as fill beneath the engineered cap in the northern portion of the Site.
- Continued regrading in the northern portion of the Site to the subgrade elevations for the engineered cap.
- Continued construction of the revetment cap in the northern portion of the Site above the Mean High-Water elevation.
- Installation of the engineered cap in the northern portion of the Site depending on weather conditions.

Please contact Kenneth Lento at 781-907-3655 if you have any questions or comments.

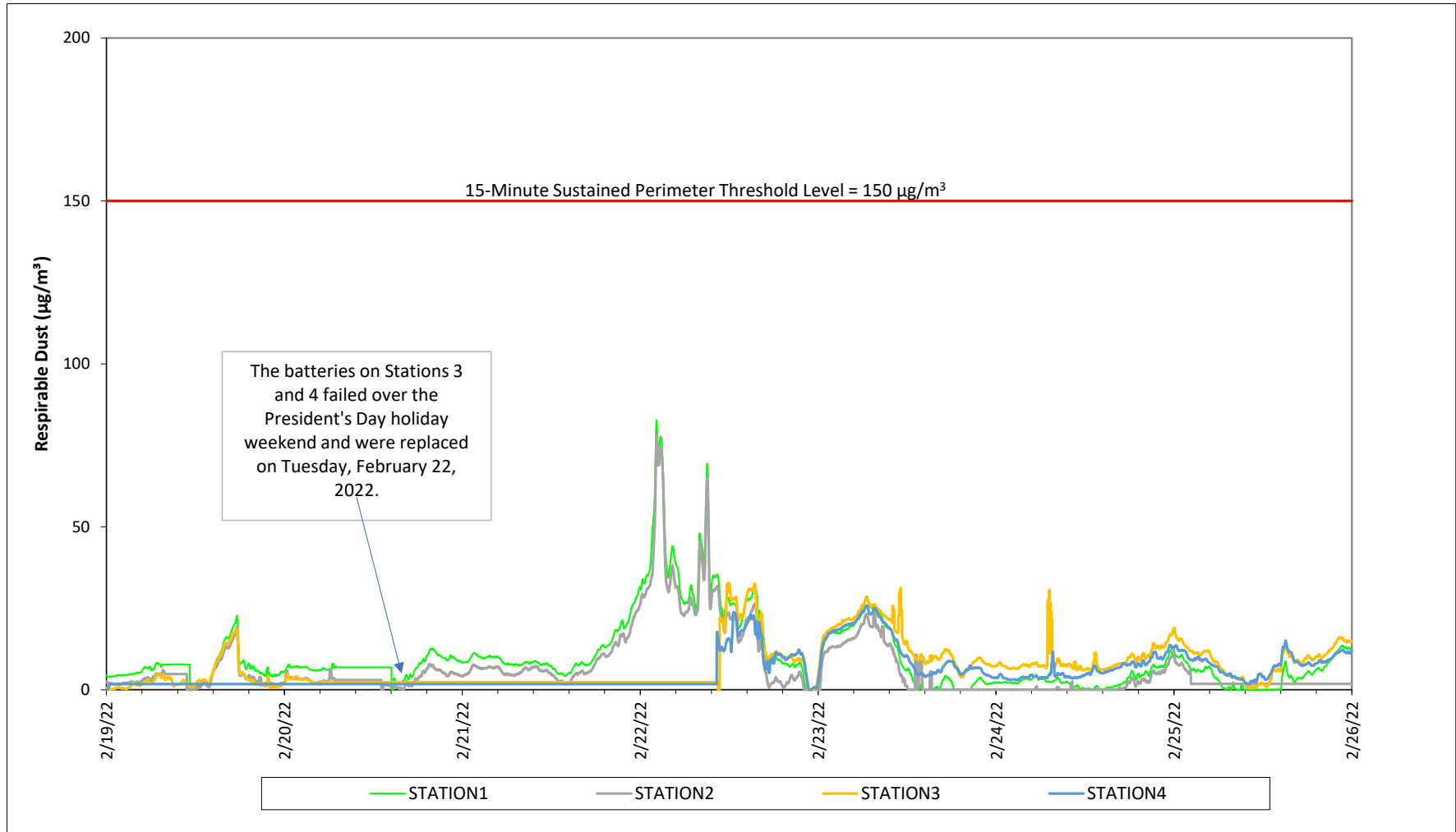
Attachments:

Weekly Perimeter Air Monitoring Results

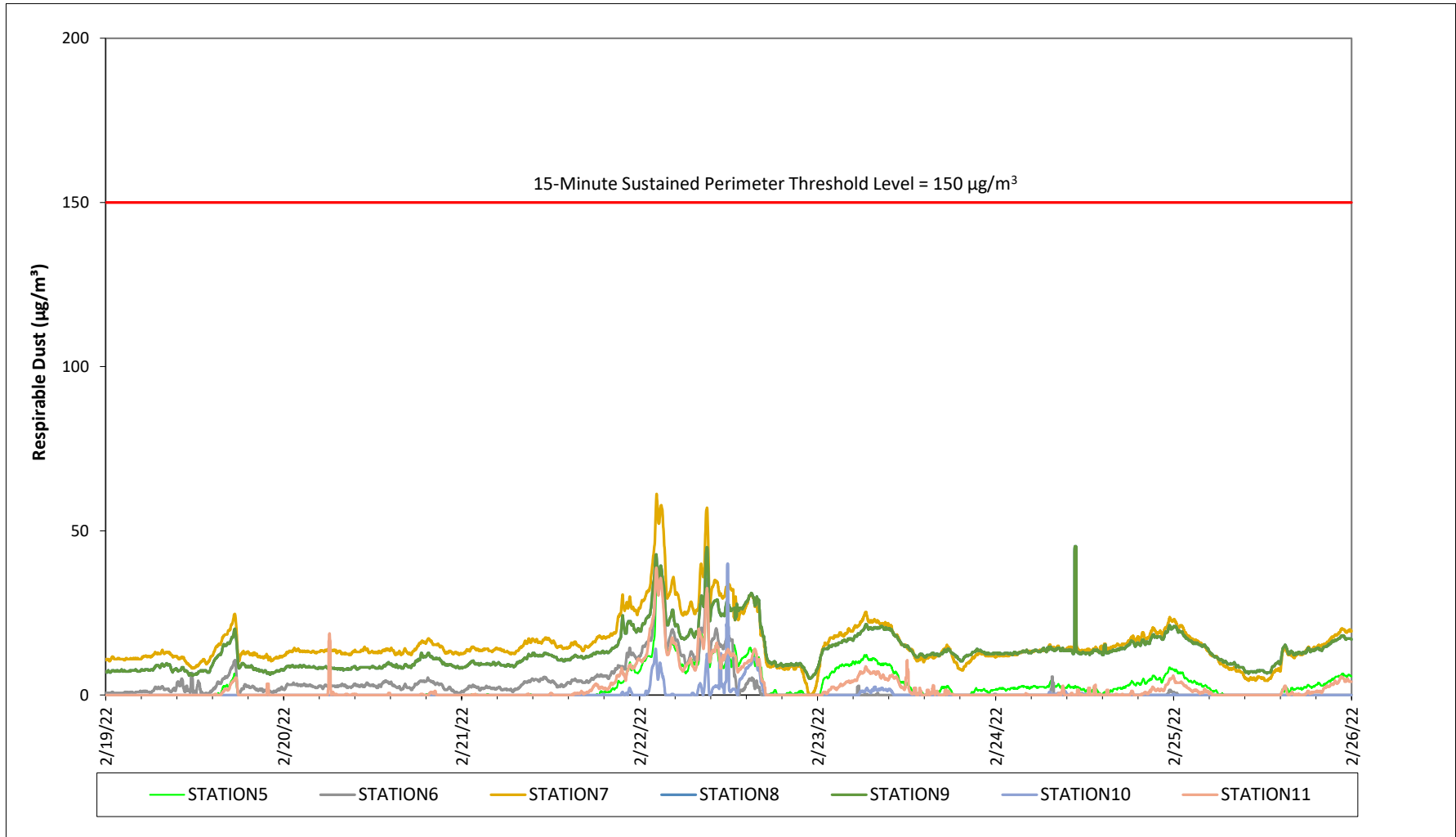
Air Monitoring Station Locations

Weekly Ambient Air Sampling Results

Prepared by National Grid for the Businesses and Residents Located Near the Former
Tidewater Facility
Air Quality Monitoring - Respirable Dust

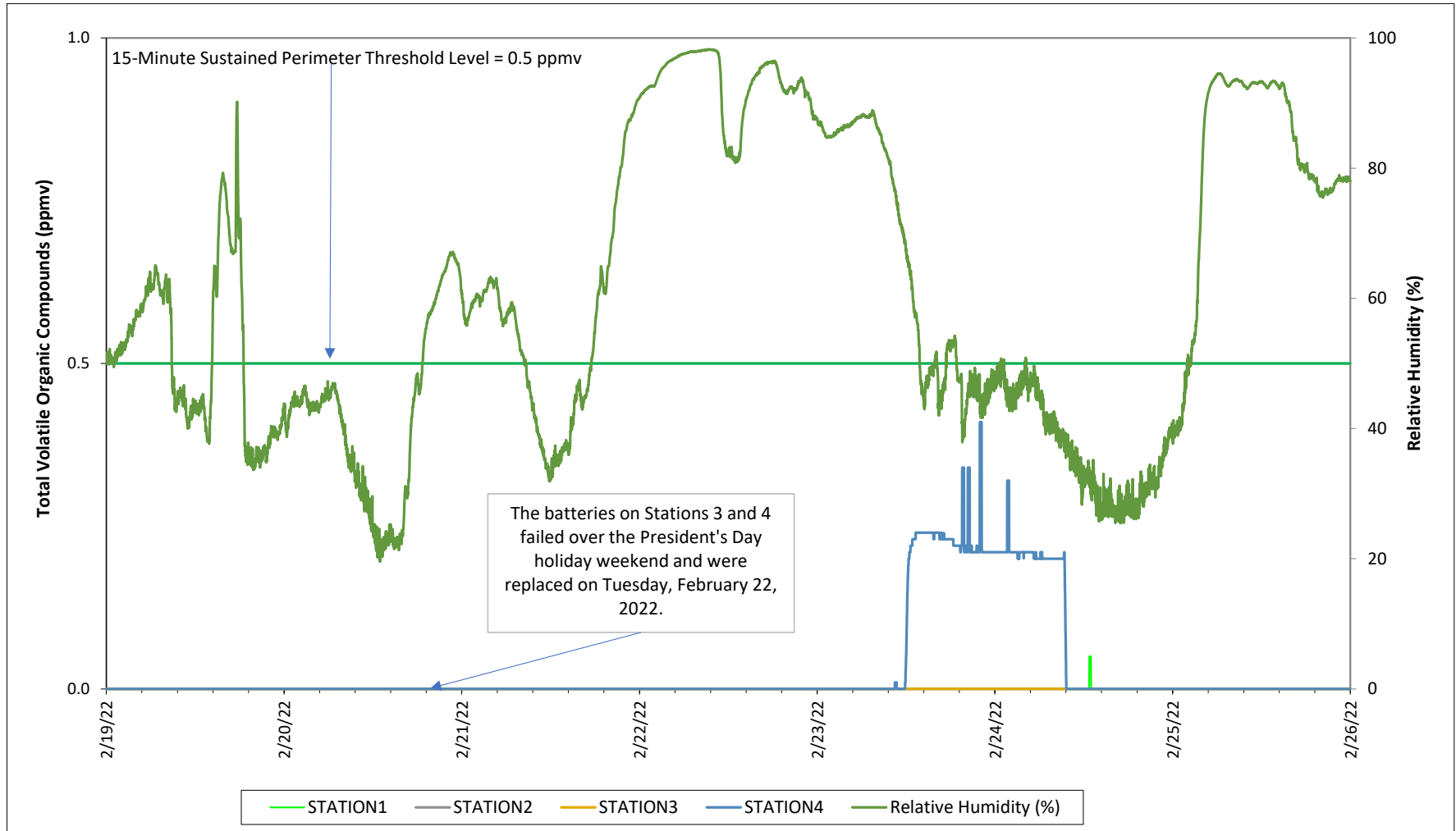


Prepared by National Grid for the Businesses and Residents Located Near the Former
Tidewater Facility
Air Quality Monitoring - Respirable Dust



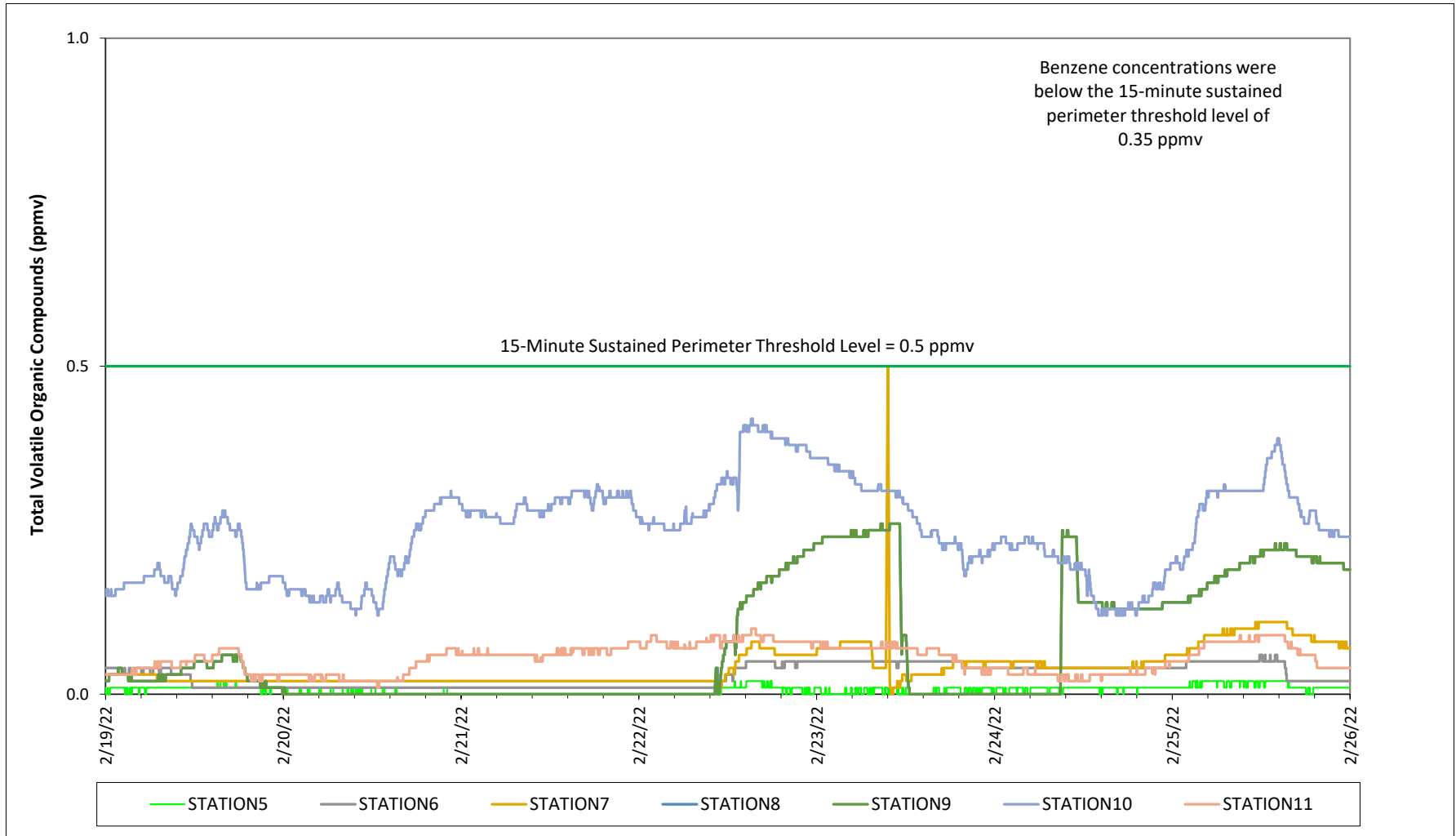
Prepared by National Grid for the Businesses and Residents Located Near the Former
Tidewater Facility

Air Quality Monitoring - Total Volatile Organic Compounds

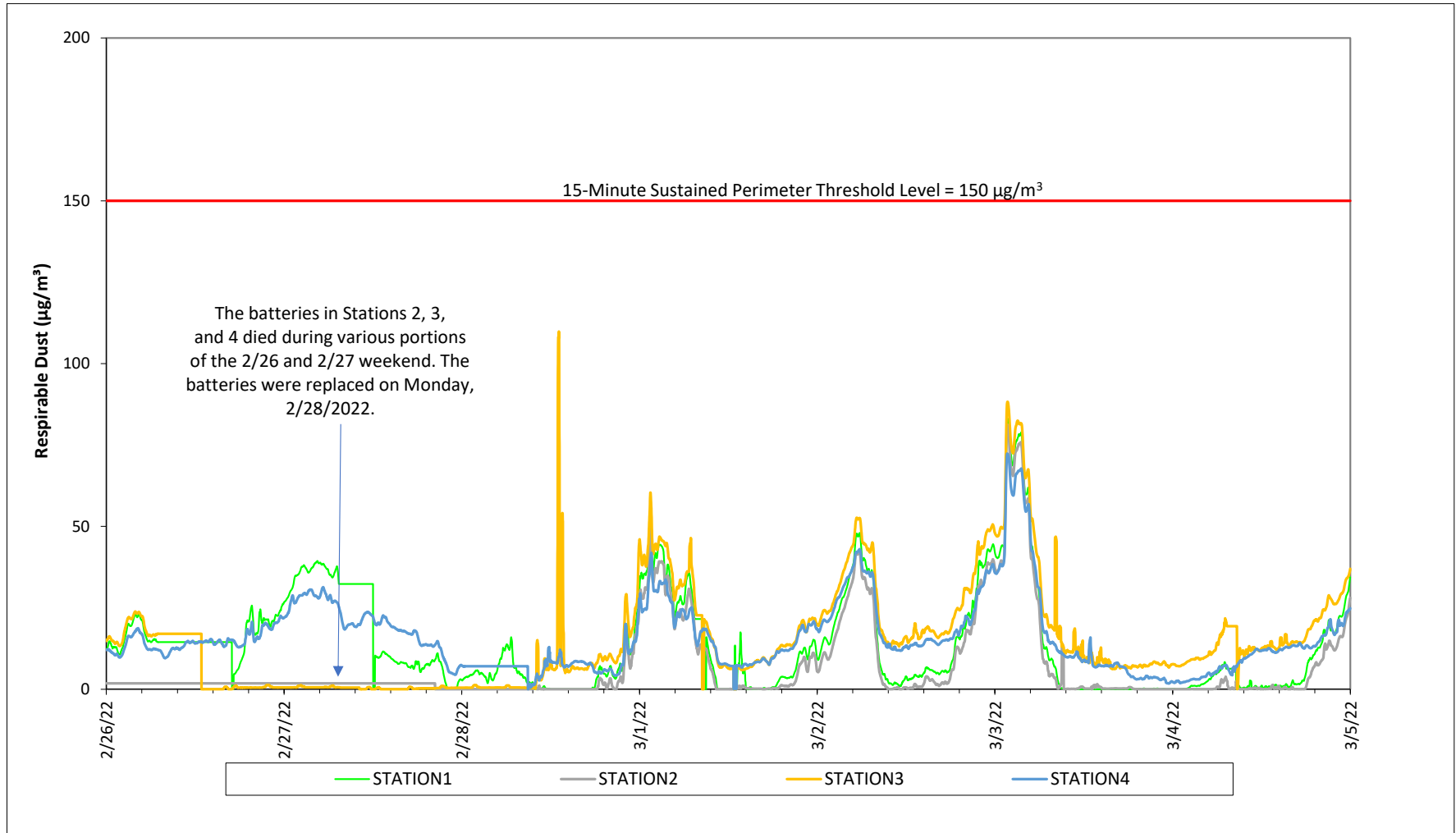


Prepared by National Grid for the Businesses and Residents Located Near the Former
Tidewater Facility

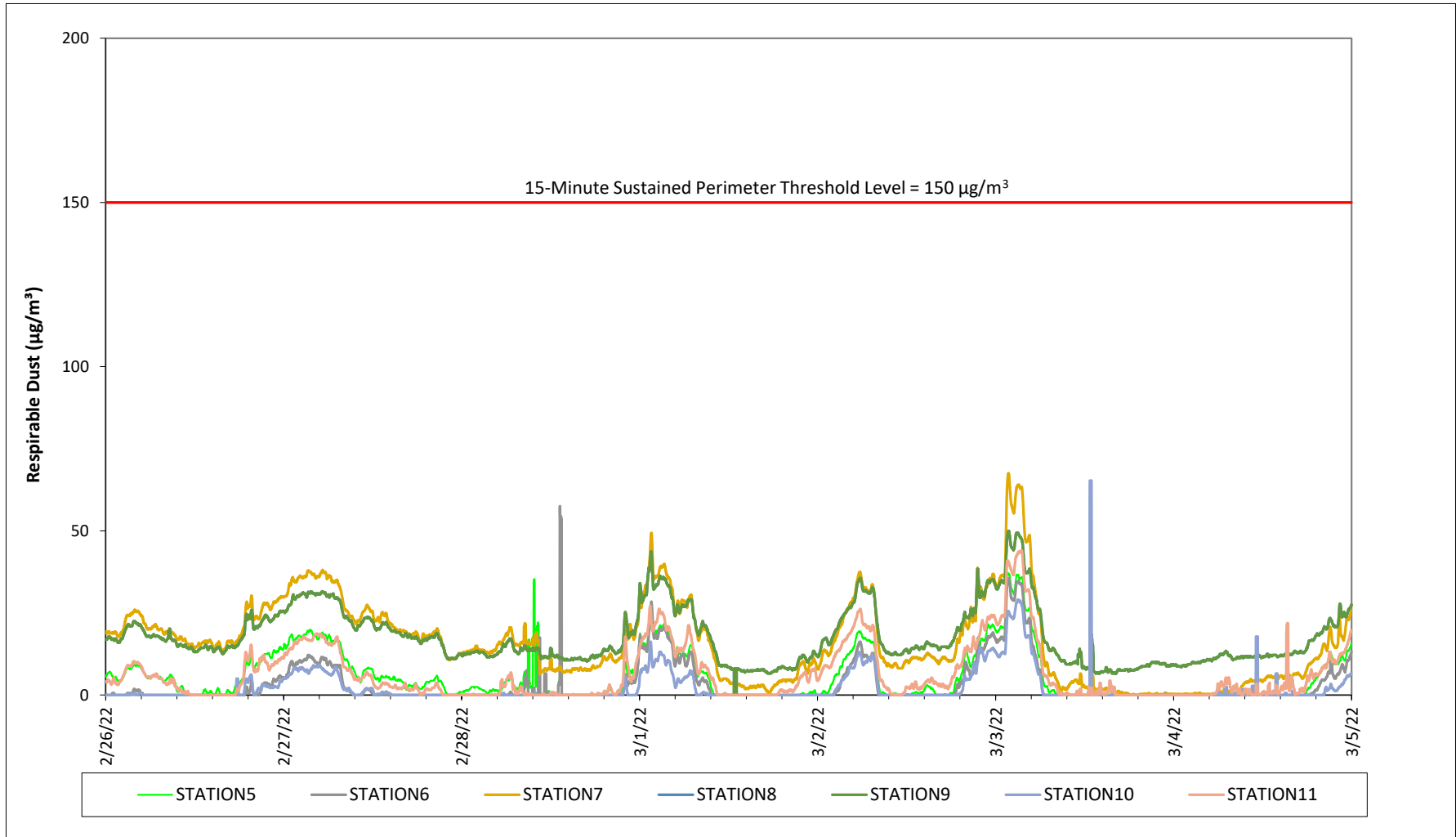
Air Quality Monitoring - Total Volatile Organic Compounds



Prepared by National Grid for the Businesses and Residents Located Near the Former
Tidewater Facility
Air Quality Monitoring - Respirable Dust

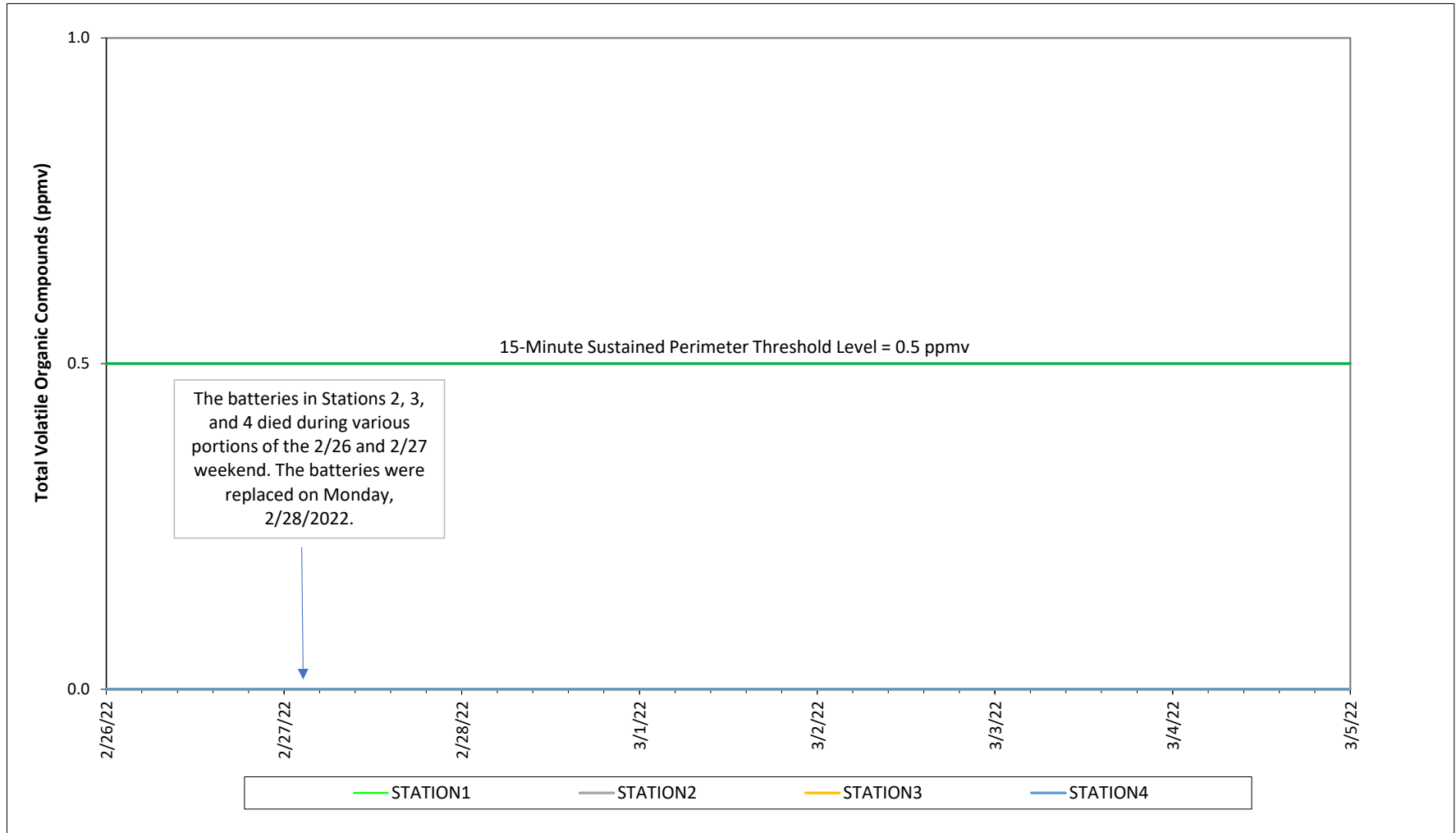


Prepared by National Grid for the Businesses and Residents Located Near the Former
Tidewater Facility
Air Quality Monitoring - Respirable Dust



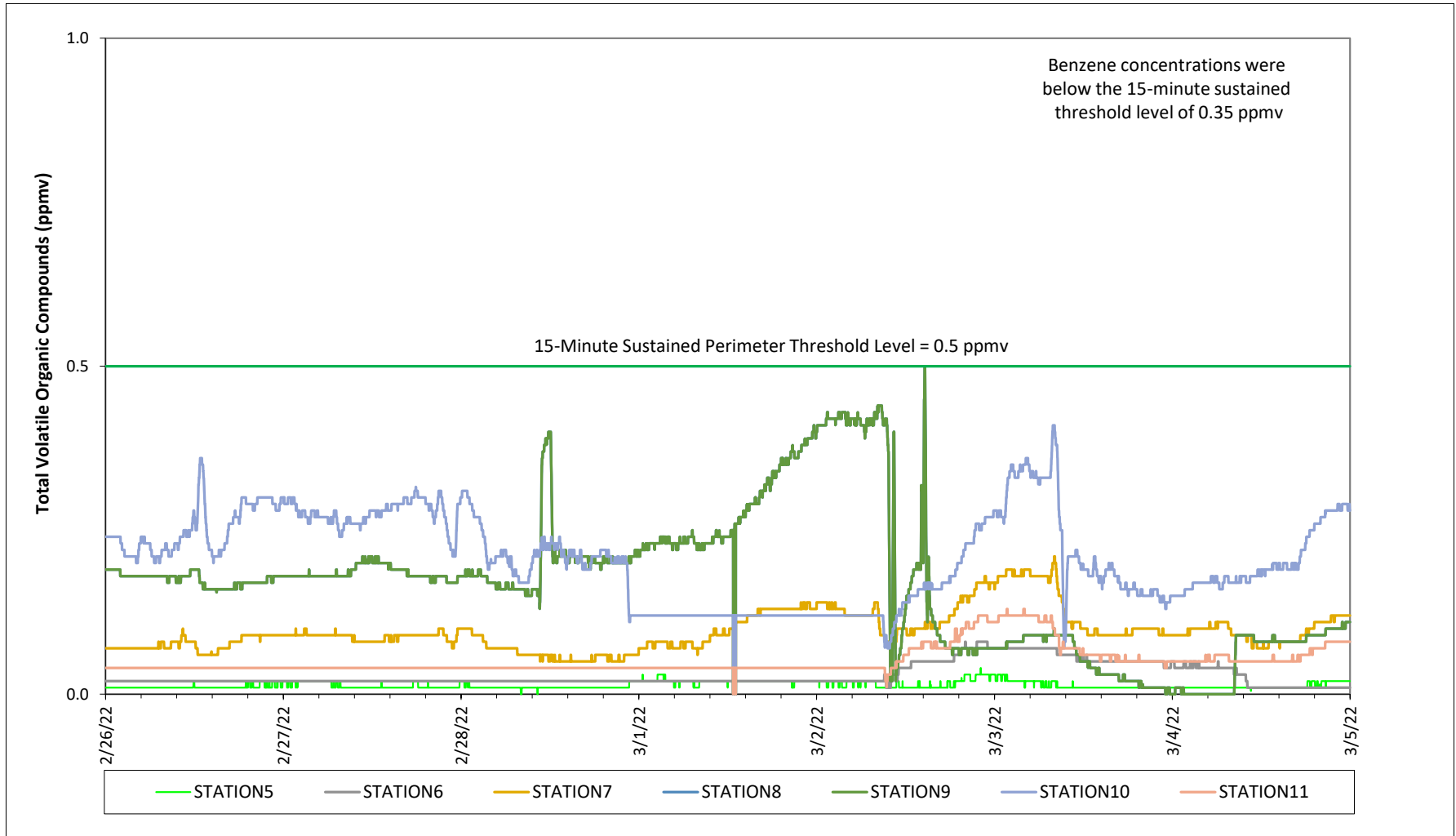
Prepared by National Grid for the Businesses and Residents Located Near the Former
Tidewater Facility

Air Quality Monitoring - Total Volatile Organic Compounds

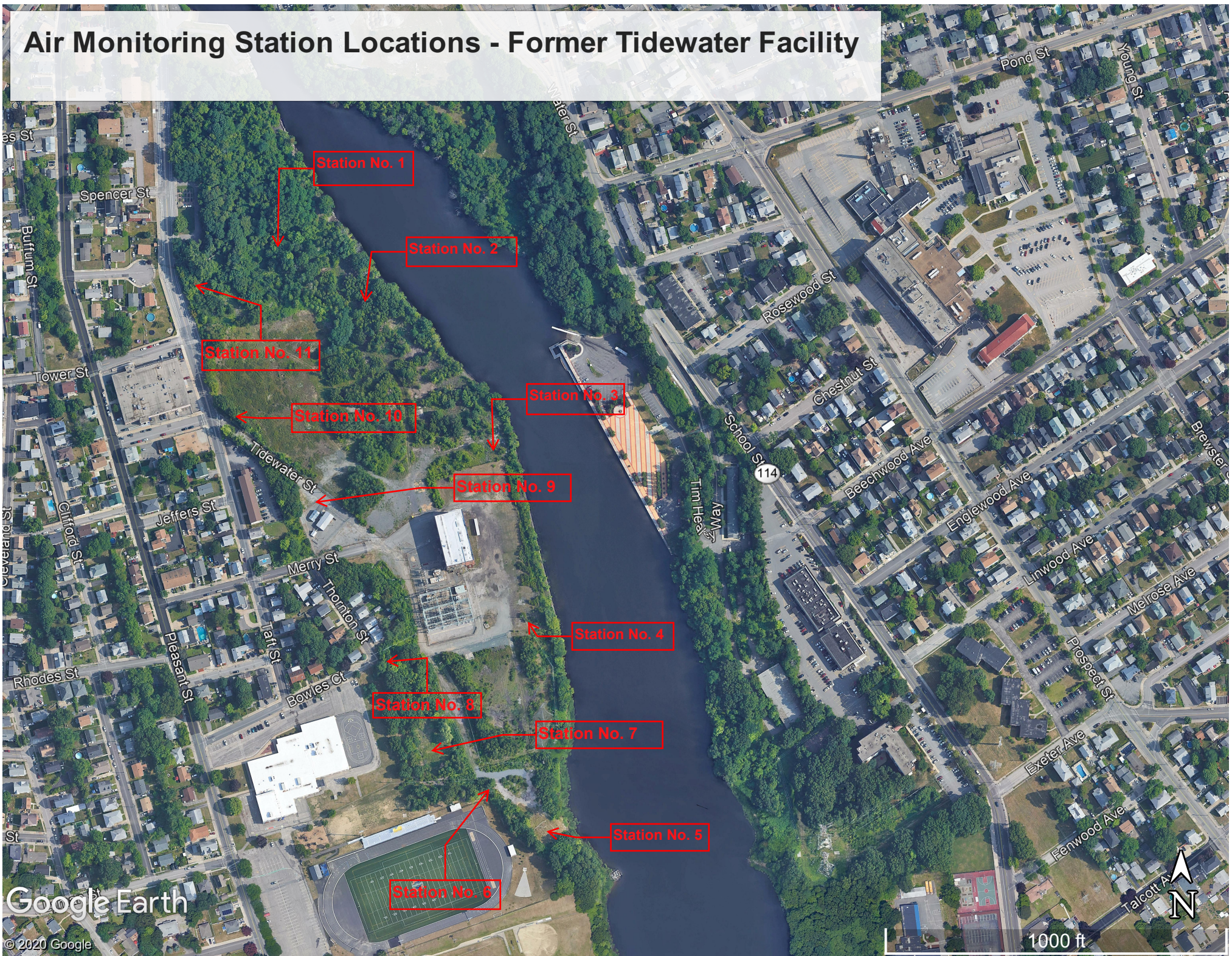


Prepared by National Grid for the Businesses and Residents Located Near the Former
Tidewater Facility

Air Quality Monitoring - Total Volatile Organic Compounds



Air Monitoring Station Locations - Former Tidewater Facility



**Prepared by National Grid for the Businesses and Residents Located Near the Former Tidewater Facility
Weekly Ambient Air Sampling Results**

Sample Date	Compounds				
	Benzene	Toluene	Ethylbenzene	Total Xylenes	Naphthalene
	(ppb v/v)				
12-3-20 UP STREAM	0.13	0.22	0.079	0.054	< 0.5
12-3-20 DOWN STREAM	0.13	0.2	0.073	0.05	< 0.5
12-10-20 UP STREAM	0.25	0.23	< 0.2	0.14	< 0.5
12-10-20 DOWN STREAM	0.17	0.2	< 0.2	< 0.7	< 0.5
12-16-20 UP STREAM	0.19	0.2	0.083	0.12	< 0.5
12-16-20 DOWN STREAM	0.13	0.16	0.078	0.094	< 0.5
12-23-20 UP STREAM	0.15	0.16	< 0.2	0.1	< 0.5
12-23-20 DOWN STREAM	0.13	0.11	< 0.2	< 0.7	< 0.5
12-30-20 UP STREAM	0.21	0.22	< 0.2	< 0.7	< 0.5
12-30-20 DOWN STREAM	0.089	< 0.2	< 0.2	< 0.7	< 0.5
1/7/21 UP STREAM	0.29	1.5	0.22	2.1	< 0.5
1/7/21 DOWN STREAM	0.16	0.27	0.086	0.42	< 0.5
1/14/21 UP STREAM	0.43	0.44	< 0.2	0.23	< 0.5
1/14/21 DOWN STREAM	0.4	0.52	0.076	0.3	< 0.5
1-21-21 UPSTREAM	0.15	0.28	0.1	< 0.7	0.24
1-21-21 DOWNSTREAM	0.18	0.23	0.11	0.1	< 0.5
1-28-21 UPSTREAM	0.21	0.19	< 0.2	< 0.7	< 0.5
1-28-21 DOWNSTREAM	0.21	0.17	< 0.2	< 0.7	< 0.5
2-4-21 UPSTREAM	0.2	1.1	0.23	1.4	0.18
2-4-21 DOWNSTREAM	0.23	0.29	0.26	0.29	< 1.1
2-11-21 UPSTREAM	0.19	0.12	< 0.2	< 0.7	< 0.5
2-11-21 DOWNSTREAM	0.17	< 0.2	< 0.2	< 0.7	< 0.5
2-18-21 UPSTREAM	0.46	2.8	0.11	0.25	< 0.5
2-18-21 DOWNSTREAM	0.31	0.42	0.13	0.45	< 0.5
2-25-21 UPSTREAM	< 0.2	0.16	< 0.2	0.16	< 0.5
2-25-21 DOWNSTREAM	0.13	< 0.2	0.081	0.3	< 0.5
3-4-21 UPSTREAM	0.2	0.21	< 0.2	0.18	0.27
3-4-21 DOWNSTREAM	0.15	0.12	< 0.2	0.16	< 0.5
3-11-21 UPSTREAM	0.18	0.17	< 0.2	0.23	0.3
3-11-21 DOWNSTREAM	0.18	0.22	0.23	1.0	< 0.5
3-18-21 DOWNSTREAM	0.44	1.6	0.19	0.67	< 0.5
3-25-21 UPSTREAM	0.17	0.32	0.85	4.1	0.53
3-25-21 DOWNSTREAM	0.33	0.67	0.16	0.57	0.27
4-1-21 UPSTREAM	0.22	0.17	< 0.2	< 0.7	< 0.5
4-1-21 DOWNSTREAM	0.12	0.11	< 0.2	< 0.7	< 0.5
4-8-21 UPSTREAM	0.096	0.12	1.5	8.0	< 0.5
4-8-21 DOWNSTREAM	0.086	0.14	0.086	0.38	0.19
4-15-21 UPSTREAM	0.85	0.57	0.1	0.44	< 0.5
4-15-21 DOWNSTREAM	0.11	0.11	0.26	1.20	< 0.5
4-22-21 UPSTREAM	0.11	< 0.2	< 0.2	< 0.7	< 0.5
4-22-21 DOWNSTREAM	0.11	0.16	< 0.2	< 0.7	< 0.5
4-29-21 UPSTREAM	0.14	0.34	0.11	0.32	0.26
4-29-21 DOWNSTREAM	0.19	0.39	0.11	0.37	0.27
5-6-21 UPSTREAM	0.086	0.15	< 0.2	< 0.7	0.38
5-6-21 DOWNSTREAM	1.0	8.4	0.21	0.69	< 0.5
5-13-21 UPSTREAM	< 0.2	0.36	< 0.2	0.19	0.34
5-13-21 DOWNSTREAM	0.12	< 0.2	< 0.2	< 0.7	< 0.5
5-20-2021 UPSTREAM	0.38	2.5	< 0.2	< 0.7	< 0.5
5-20-2021 DOWNSTREAM	0.16	0.56	0.3	1.40	< 0.5
Project Action Levels	6.2	80	230	23	20

**Prepared by National Grid for the Businesses and Residents Located Near the Former Tidewater Facility
Weekly Ambient Air Sampling Results**

Sample Date	Compounds				
	Benzene	Toluene	Ethylbenzene	Total Xylenes	Naphthalene
	(ppb v/v)				
5-27-21 UPSTREAM	0.095	0.12	0.45	2.10	0.4
5-27-21 DOWNSTREAM	0.075	0.094	< 0.2	< 0.7	< 0.5
6-3-21 UPSTREAM	< 0.2	0.16	< 0.2	< 0.7	< 0.5
6-3-21 DOWNSTREAM	0.075	0.11	< 0.2	< 0.7	< 0.5
6-10-21 UPSTREAM	< 0.2	< 0.2	< 0.2	< 0.7	< 0.5
6-10-21 DOWNSTREAM	< 0.2	< 0.2	< 0.2	< 0.7	< 0.5
6-17-21 UPSTREAM	0.64	0.6	0.48	0.66	0.64
6-17-21 DOWNSTREAM	0.12	0.12	0.16	< 0.7	< 0.5
6-24-21 UPSTREAM	< 0.2	0.17	< 0.2	< 0.7	< 0.5
6-24-21 DOWNSTREAM	< 0.2	0.45	0.19	0.82	< 0.5
7-1-21 UPSTREAM	1.10	7.9	0.12	0.39	< 0.7
7-1-21 DOWNSTREAM	0.13	0.74	< 0.2	0.29	< 0.7
7-8-21 UPSTREAM	< 0.2	0.29	< 0.2	0.38	0.29
7-8-21 DOWNSTREAM	< 0.2	< 0.2	< 0.2	< 0.7	< 0.5
7-15-21 UPSTREAM	0.10	0.28	< 0.2	0.32	< 0.5
7-15-21 DOWNSTREAM	0.14	0.37	0.31	1.5	< 0.5
7-22-21 UPSTREAM	0.27	0.3	< 0.2	< 0.7	< 0.5
7-22-21 DOWNSTREAM	0.30	0.33	< 0.2	< 0.7	< 0.5
7-29-21 UPSTREAM	0.22	0.26	0.1	0.56	0.19
7-29-21 DOWNSTREAM	0.099	0.23	< 0.2	< 0.7	< 0.5
8-5-21 UPSTREAM	0.70	1.2	< 0.2	0.17	< 0.5
8-5-21 DOWNSTREAM	0.310	0.53	< 0.25	< 0.88	< 0.63
8-12-21 UPSTREAM	0.19	0.18	< 0.2	< 0.7	0.2
8-12-21 DOWNSTREAM	1.2	0.7	< 0.2	0.31	< 0.5
8-19-21 UPSTREAM	0.66	6.2	1.2	3.50	< 1.6
8-19-21 DOWNSTREAM	0.21	0.24	< 0.2	0.11	< 0.5
8-26-21 UPSTREAM	0.34	0.73	0.22	0.90	0.18
8-26-21 DOWNSTREAM	0.34	0.63	0.24	0.87	0.31
9-1-21 UPSTREAM	0.17	0.34	< 0.2	< 0.7	< 0.5
9-1-21 DOWNSTREAM	0.18	0.35	< 0.2	0.19	< 0.5
9-9-21 UPSTREAM	0.12	0.22	< 0.2	0.28	< 0.5
9-9-21 DOWNSTREAM	< 0.2	0.89	< 0.2	< 0.7	0.42
9-16-21 UPSTREAM	0.14	0.26	0.11	0.31	0.3
9-16-21 DOWNSTREAM	0.11	0.26	< 0.2	0.28	< 0.5
9-23-21 UPSTREAM	< 0.2	0.12	< 0.2	< 0.7	< 0.5
9-23-21 DOWNSTREAM	< 0.2	0.12	< 0.2	< 0.7	< 0.5
9-30-21 UPSTREAM	0.17	0.37	0.23	0.66	< 0.51
9-30-21 DOWNSTREAM	0.086	0.21	< 0.2	< 0.7	< 0.5
10-7-21 UPSTREAM	0.24	0.55	0.14	0.41	< 0.5
10-7-21 DOWNSTREAM	< 0.2	0.42	0.11	0.16	< 0.5
10-14-21 UPSTREAM	0.19	0.40	< 0.2	< 0.7	< 0.5
10-14-21 DOWNSTREAM	0.34	0.89	0.23	0.75	< 0.5
10-22-21 UPWIND	0.14	0.32	< 0.2	< 0.7	< 0.5
10-22-21 DOWNWIND	0.13	0.39	< 0.2	0.43	< 0.5
10-28-21 UPWIND	0.41	0.14	0.46	0.10	< 0.5
10-28-21 DOWNWIND	0.18	0.43	< 0.2	< 0.70	< 0.5
11-4-2021 UPWIND	0.20	0.31	< 0.2	< 0.70	< 0.5
11-4-2021 DOWNWIND	0.14	0.23	< 0.2	< 0.7	< 0.5
11-11-21 UPWIND	0.23	0.45	0.17	0.51	0.35
11-11-21 DOWNWIND	0.31	0.69	0.18	0.56	< 0.5
11-18-21 DOWNWIND	0.14	0.29	< 0.2	< 0.7	< 0.5
11-18-2021 UPWIND	0.29	0.54	0.32	0.26	2.4
11-23-21 DOWNWIND	0.13	0.24	< 0.2	0.33	< 0.5
11-23-21 UPWIND	0.27	1.0	< 0.2	0.30	0.23
12-02-21 DOWNWIND	0.28	0.82	0.22	1.0	0.95
12-02-21 UPWIND	0.36	0.67	< 0.2	0.42	< 0.5
12-9-21 DOWNWIND	0.17	0.27	< 0.2	< 0.7	< 0.5
12-9-21 UPWIND	0.18	0.39	0.13	0.43	< 0.5
Project Action Levels	6.2	80	230	23	20

Notes:

1. The Project Action Levels are consistent with the Air Quality Monitoring Plan developed for the Site.
2. Air samples are collected in stainless steel summa canisters over an approximately 8-hour period.
3. Air samples are analyzed by EuroFins TestAmerica of Burlington, VT.
4. Results and action levels are listed in parts per billion volume/volume (ppb v/v).
5. An upstream ambient air sample was not collected on March 18, 2021 due to a problem with the sampling equipment.

**Prepared by National Grid for the Businesses and Residents Located Near the Former Tidewater Facility
Weekly Ambient Air Sampling Results**

Sample Date	Compounds				
	Benzene	Toluene	Ethylbenzene	Total Xylenes	Naphthalene
	(ppb v/v)				
12-16-21 DOWNWIND	0.15	0.21	< 0.2	0.38	0.89
12-16-21 UPWIND	0.13	0.16	< 0.2	< 0.7	< 0.5
12-22-21 DOWNWIND	0.27	0.39	< 0.2	< 0.7	< 0.5
12-22-21 UPWIND	0.29	0.47	0.12	< 0.5	< 0.5
12-29-21 UPWIND	0.19	0.28	< 0.2	< 0.7	< 0.5
12-29-21 DOWNWIND	0.26	0.53	0.19	1.0	< 0.5
01-05-2022 UPWIND	0.28	0.38	0.14	0.38	0.2
01-05-2022 DOWNWIND	0.40	1.10	0.16	0.5	0.71
1-13-22 UPWIND	0.49	0.91	0.15	0.59	< 0.5
1-13-22 DOWNWIND	0.83	1.40	0.19	0.79	< 0.5
1-20-22 DOWNWIND	0.18	0.32	0.11	0.34	0.17
1-20-22 UPWIND	0.14	1.40	< 0.2	< 0.7	< 0.5
UPWIND 012722	0.24	0.26	< 0.2	< 0.7	< 0.5
DOWNWIND 012722	0.30	1.0	< 0.2	0.4	< 0.5
2/3/22 UPWIND	0.27	0.50	0.1	0.28	< 0.5
2/3/22 DOWNWIND	0.30	0.49	0.12	0.46	0.22
2-10-22 UPWIND	0.17	0.27	< 0.2	< 0.7	< 0.5
2-10-22 DOWNWIND	0.19	0.22	< 0.2	< 0.7	< 0.5
2-17-22 UPWIND	< 0.2	0.11	< 0.2	< 0.7	< 0.5
2-17-22 DOWNWIND	0.18	0.66	0.26	1.5	1.1
2-24-22 UPWIND	< 0.2	0.11	< 0.2	< 0.7	0.17
2-24-22 DOWNWIND	< 0.2	< 0.2	< 0.2	< 0.7	< 0.5
3-03-22 UPWIND	0.11	< 0.2	< 0.2	< 0.7	< 0.5
3-03-22 DOWNWIND	0.14	< 0.2	< 0.2	< 0.7	< 0.5
Project Action Levels	6.2	80	230	23	20

Notes:

1. The Project Action Levels are consistent with the Air Quality Monitoring Plan developed for the Site.
2. Air samples are collected in stainless steel summa canisters over an approximately 8-hour period.
3. Air samples are analyzed by EuroFins TestAmerica of Burlington, VT.
4. Results and action levels are listed in parts per billion volume/volume (ppb v/v).
5. An upstream ambient air sample was not collected on March 18, 2021 due to a problem with the sampling equipment.