



Proactive by Design

GEOTECHNICAL
ENVIRONMENTAL
ECOLOGICAL
WATER
CONSTRUCTION
MANAGEMENT



MEMORANDUM

To: Joseph Martella, RIDEM

From: Dave Rusczyk, GZA

CC: Kenneth Lento, National Grid

Date: March 30, 2021

Re: Site Response Action Report
Period March 7, 2021 through March 20, 2021
Former Tidewater Facility
Pawtucket, Rhode Island
RIDEM Case No. 95-022 / Site Remediation File No. SR-26-0934

SITE ACTIVITIES PERFORMED

- Charter Contracting Company, LLC (Charter) continued activities related to implementation of the remedial construction work. These activities included:
 - Continued installation of the steel sheetpiles for the containment wall.
 - Continued abandonment of the former screenwell structure.
 - Continued demolition of former concrete slabs and foundations and the bedrock outcrop in the northern portion of the Site.
 - Continued installation of the engineered cap proximate and beneath the transmission towers.
 - Regrading of the shoreline in the southern portion of the Site.
 - Off-Site disposal of organic waste including stumps and roots.
 - Abandonment of inactive stormwater catch basins.
- GZA continued to perform a monitoring program to evaluate turbidity levels within the Seekonk River adjacent to the Site. These readings were obtained inside and outside the turbidity curtain.
- Perimeter air monitoring was performed during the period covered by this report with 11 air monitoring stations (4 solar powered units located proximate to the river and 7 electrically powered units). These stations measured and recorded respirable dust and total volatile organic compounds (TVOC) concentrations continuously 24 hours per day/7 days per week. As indicated in the attached weekly perimeter air monitoring graphs, isolated exceedances of the TVOC (0.5 parts per million), benzene (0.35 parts per million), or respirable dust (0.150 $\mu\text{g}/\text{m}^3$) perimeter threshold levels were noted during the period covered by this report. With the exception of the following, the majority of these isolated exceedances were detected during non-working hours and the elevated levels were attributed to environmental conditions (e.g., temperate differentials between the water in the river and upland areas, humidity, and dewpoints) at the solar powered stations staged proximate to the river.
 - The elevated TVOC levels detected at Station 9 on March 9, 2021 were attributed to the emissions from a truck that was idling proximate to the station. In response to this observation, Charter was reminded of the project's truck idling restriction.



- Elevated dust levels were detected at Station 4 on March 15, 2021 while active Site operations were being performed. The dust levels however decreased to levels below threshold levels before control measures were implemented.

The air monitoring results were posted to the project website and the bulletin boards at the ends of Tidewater Street and Bowles Court and are also attached to this report.

- GZA collected ambient air samples from upwind and downwind locations on March 11, 2021 and a downwind ambient air sample on March 18, 2021 for laboratory analysis for benzene, toluene, ethylbenzene, xylenes, and naphthalene. An upwind ambient air sample was not collected on March 18, 2021 due to an issue with the sampling equipment provided by the laboratory. The analytical results from these samples indicated there were no exceedances of the project action levels. The analytical results were posted to the project website and the bulletin boards at the ends of Tidewater Street and Bowles Court and are also attached to this report.

ANTICIPATED SITE ACTIVITIES TO BE PERFORMED WITHIN NEXT 2 WEEKS

- Continued installation of the steel sheetpiles for the new containment wall.
- Continued upland demolition activities and on-Site processing of concrete debris.
- Construction of the revetment on the riverbank in the southern portion of the Site.
- Abandonment of the former screen well structure.

Please contact Kenneth Lento at 781-907-3655 if you have any questions or comments.

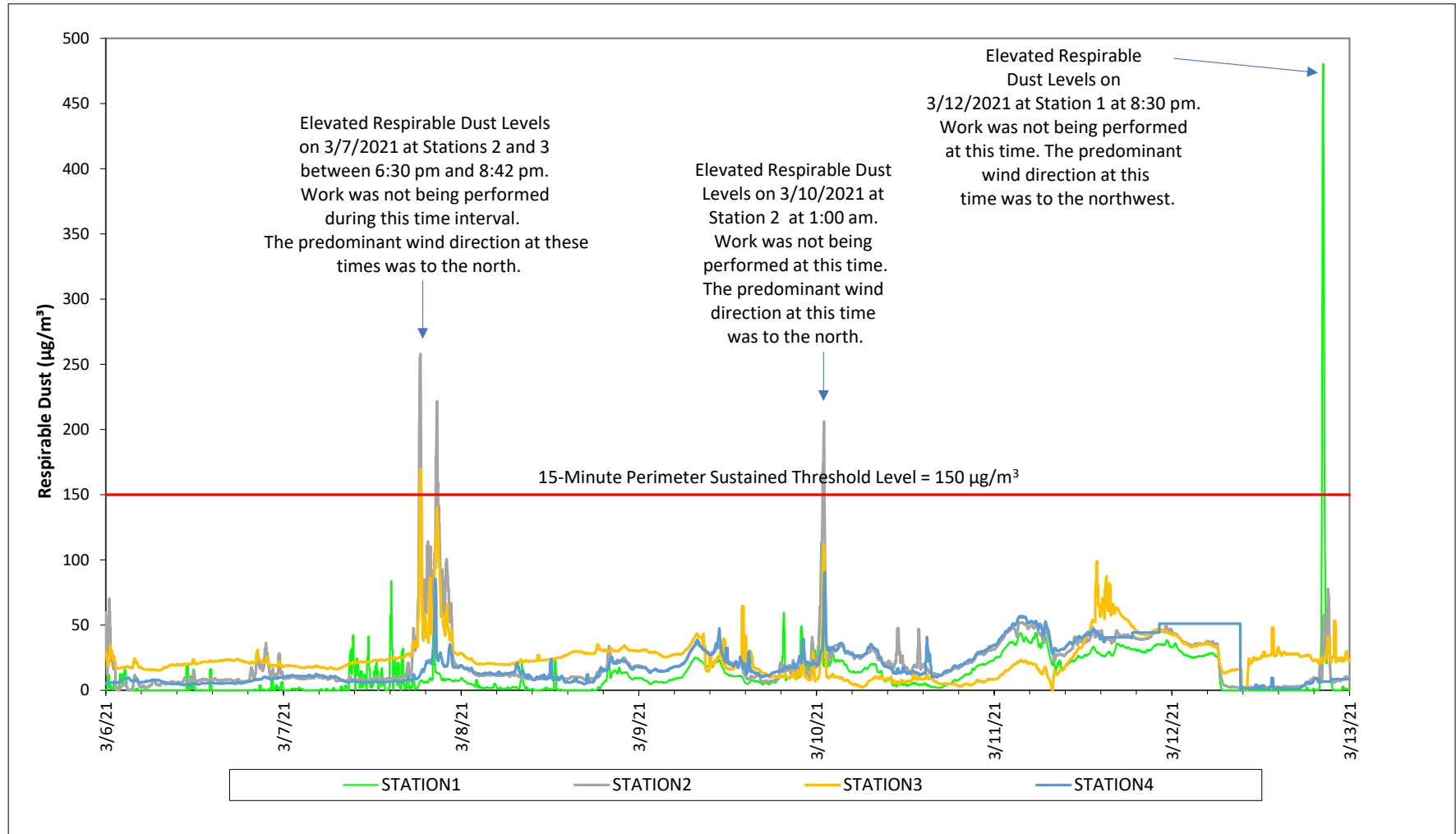
Attachments:

Weekly Perimeter Air Monitoring Results

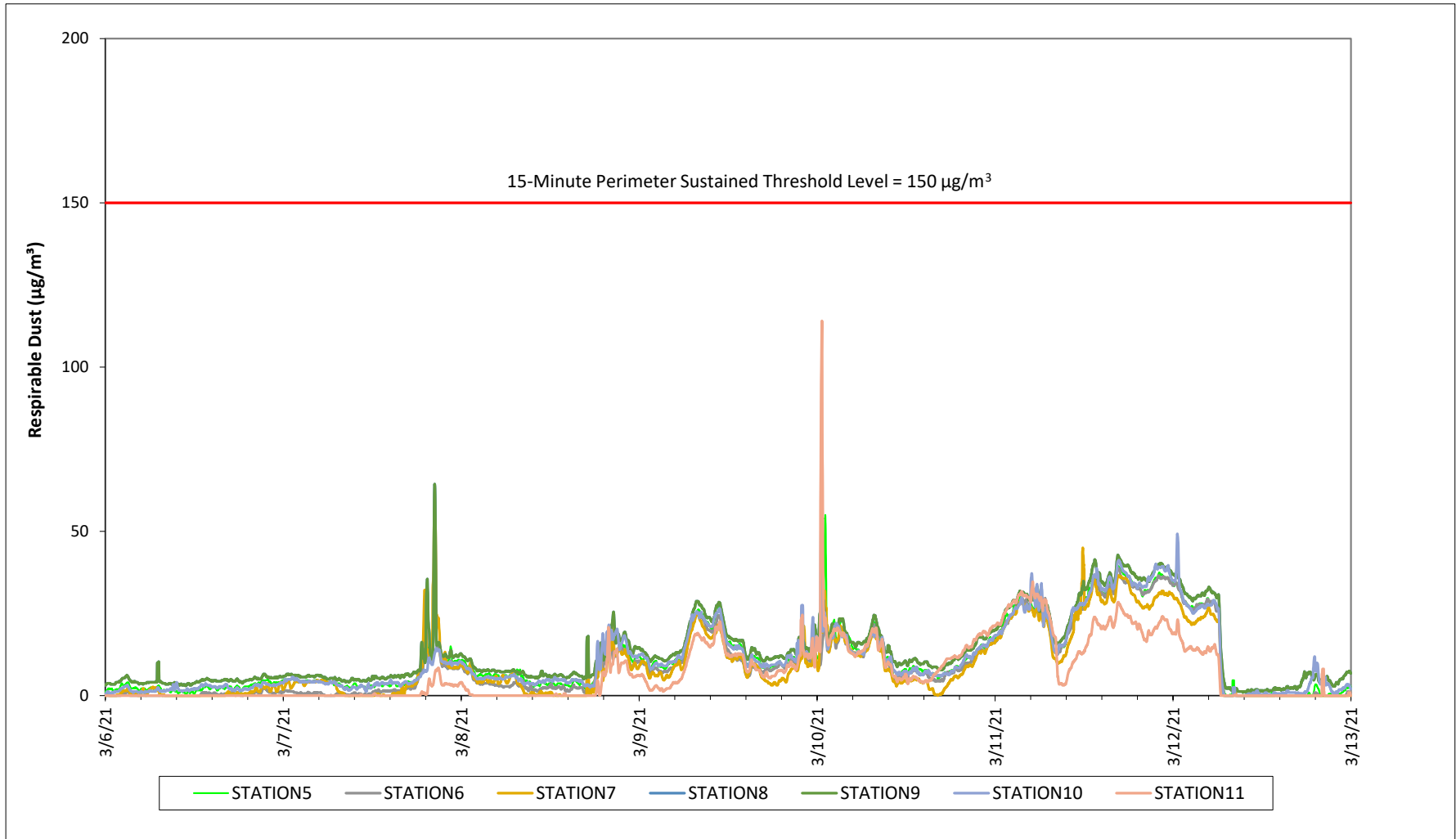
Air Monitoring Station Locations

Weekly Ambient Air Sampling Results

Prepared by National Grid for the Businesses and Residents Located Near the Former
Tidewater Facility
Air Quality Monitoring - Respirable Dust

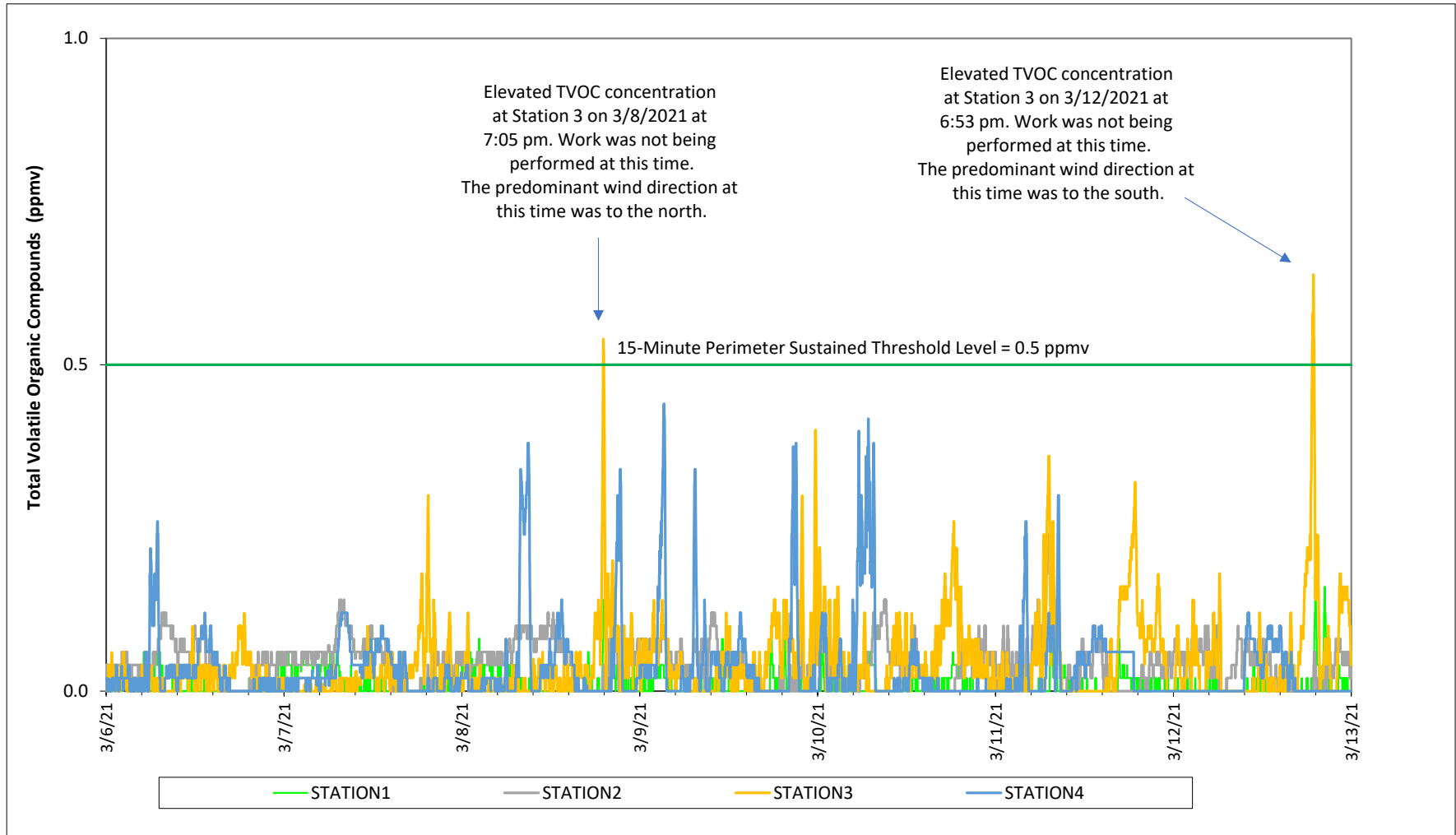


Prepared by National Grid for the Businesses and Residents Located Near the Former
Tidewater Facility
Air Quality Monitoring - Respirable Dust



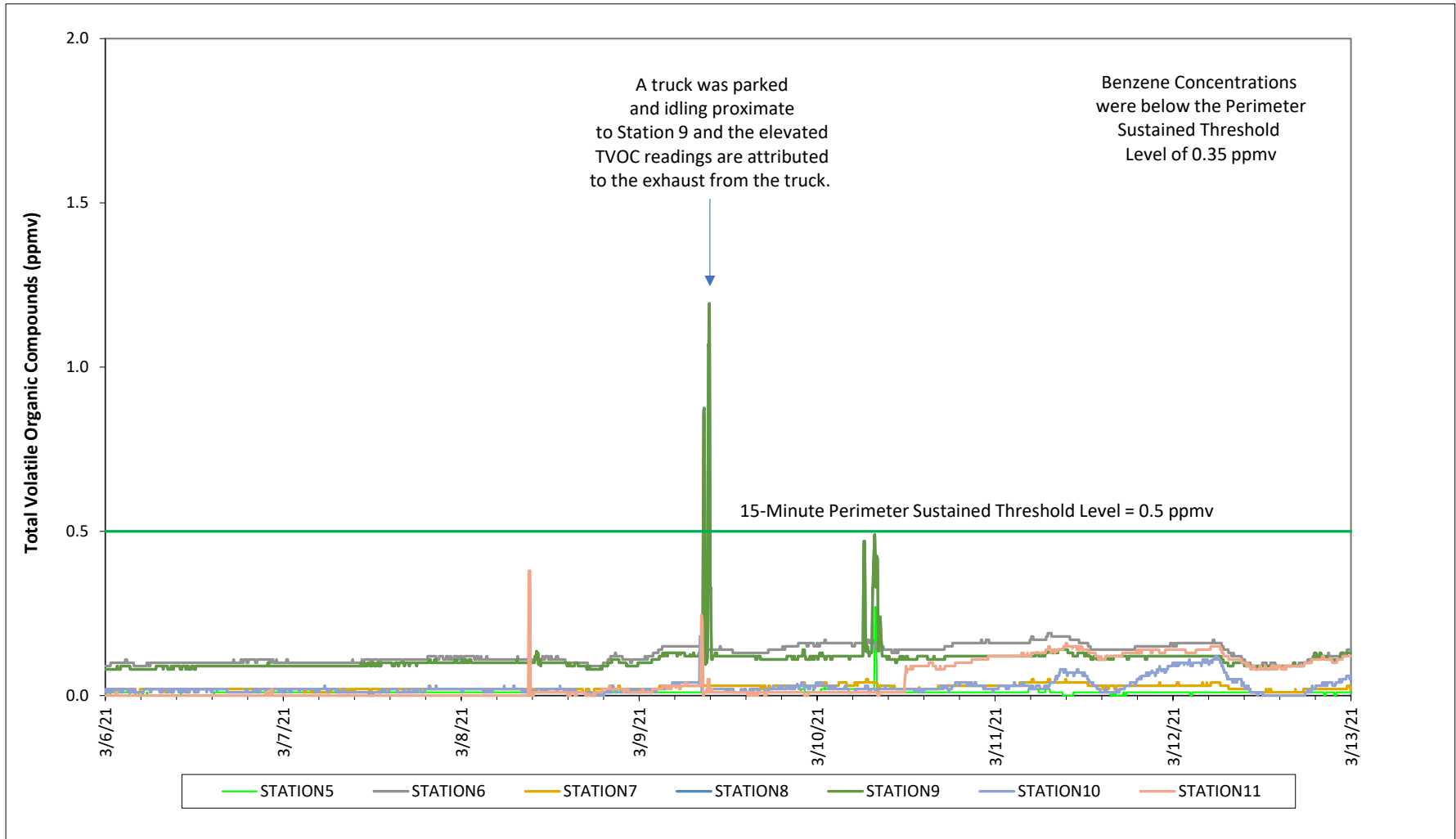
Prepared by National Grid for the Businesses and Residents Located Near the Former Tidewater Facility

Air Quality Monitoring - Total Volatile Organic Compounds

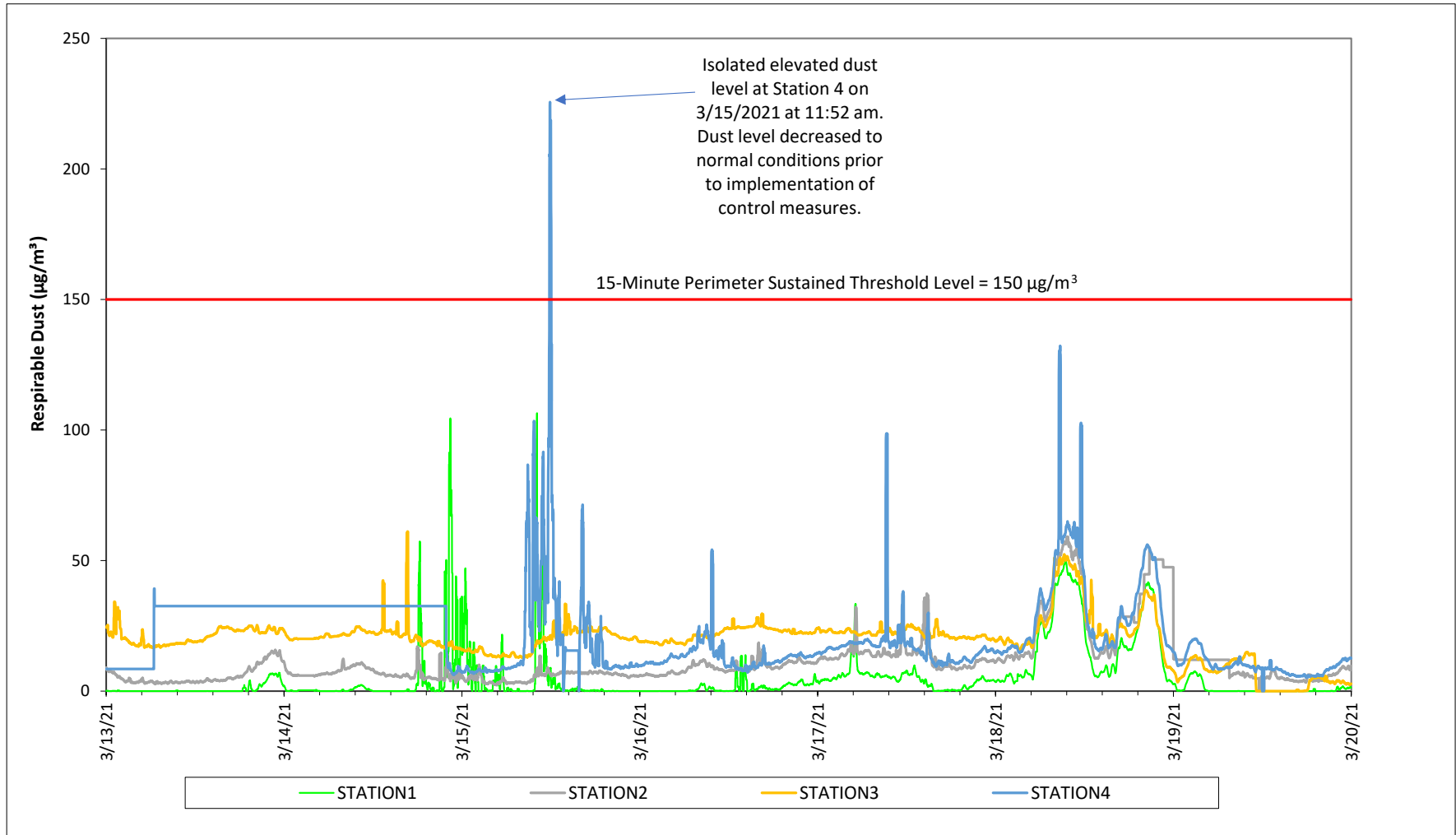


Prepared by National Grid for the Businesses and Residents Located Near the Former
Tidewater Facility

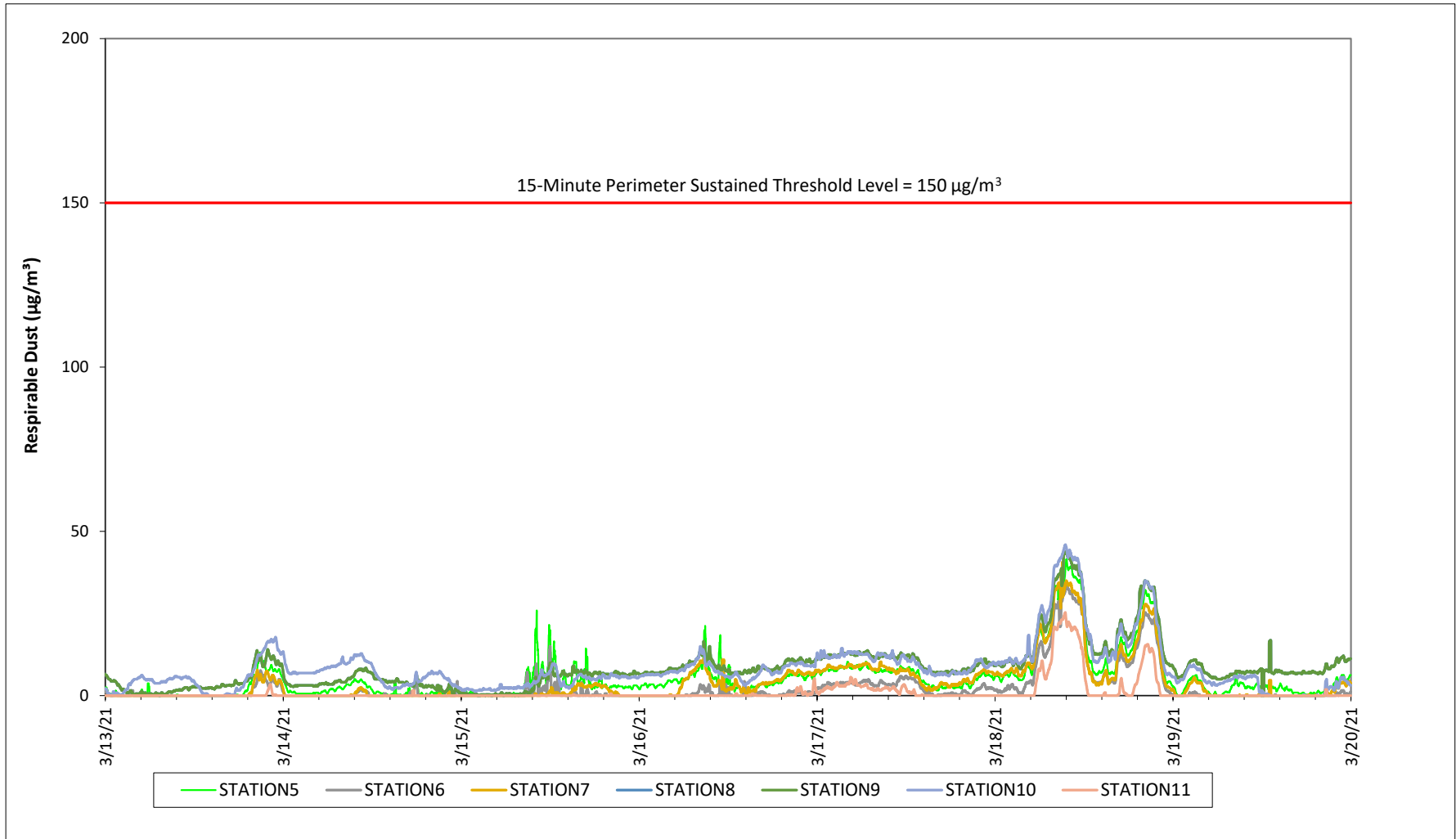
Air Quality Monitoring - Total Volatile Organic Compounds



Prepared by National Grid for the Businesses and Residents Located Near the Former
Tidewater Facility
Air Quality Monitoring - Respirable Dust

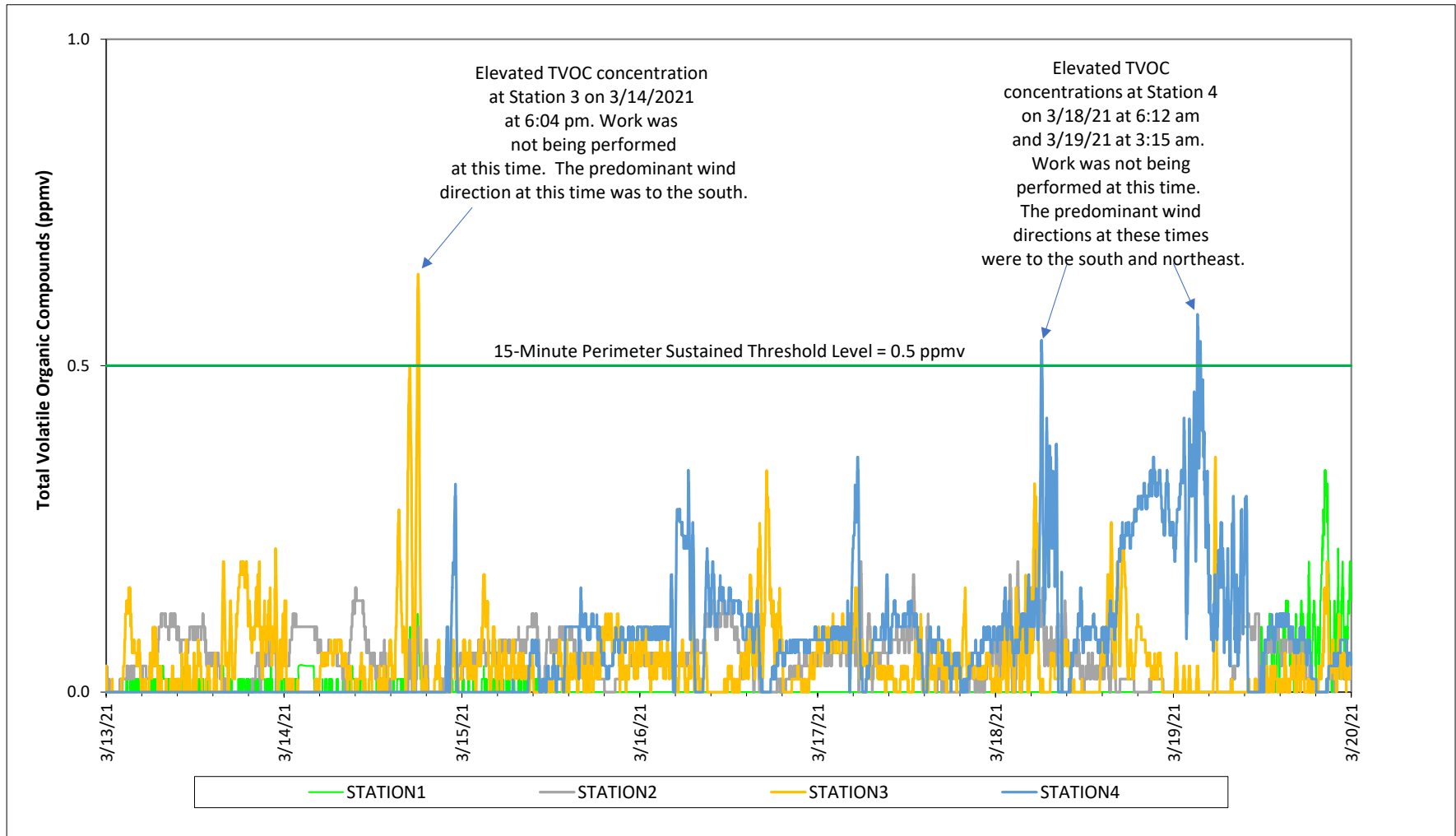


Prepared by National Grid for the Businesses and Residents Located Near the Former
Tidewater Facility
Air Quality Monitoring - Respirable Dust



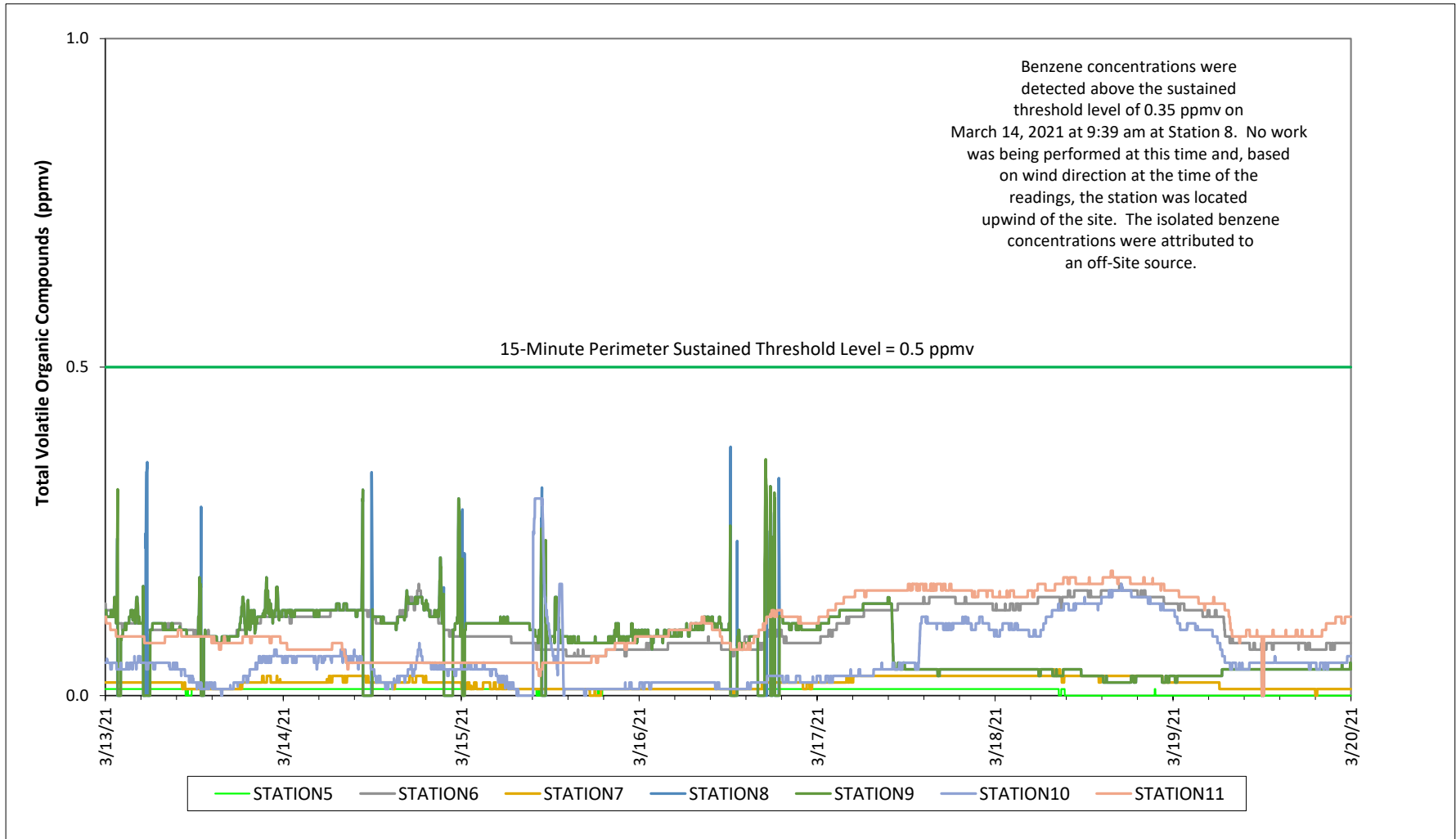
Prepared by National Grid for the Businesses and Residents Located Near the Former Tidewater Facility

Air Quality Monitoring - Total Volatile Organic Compounds

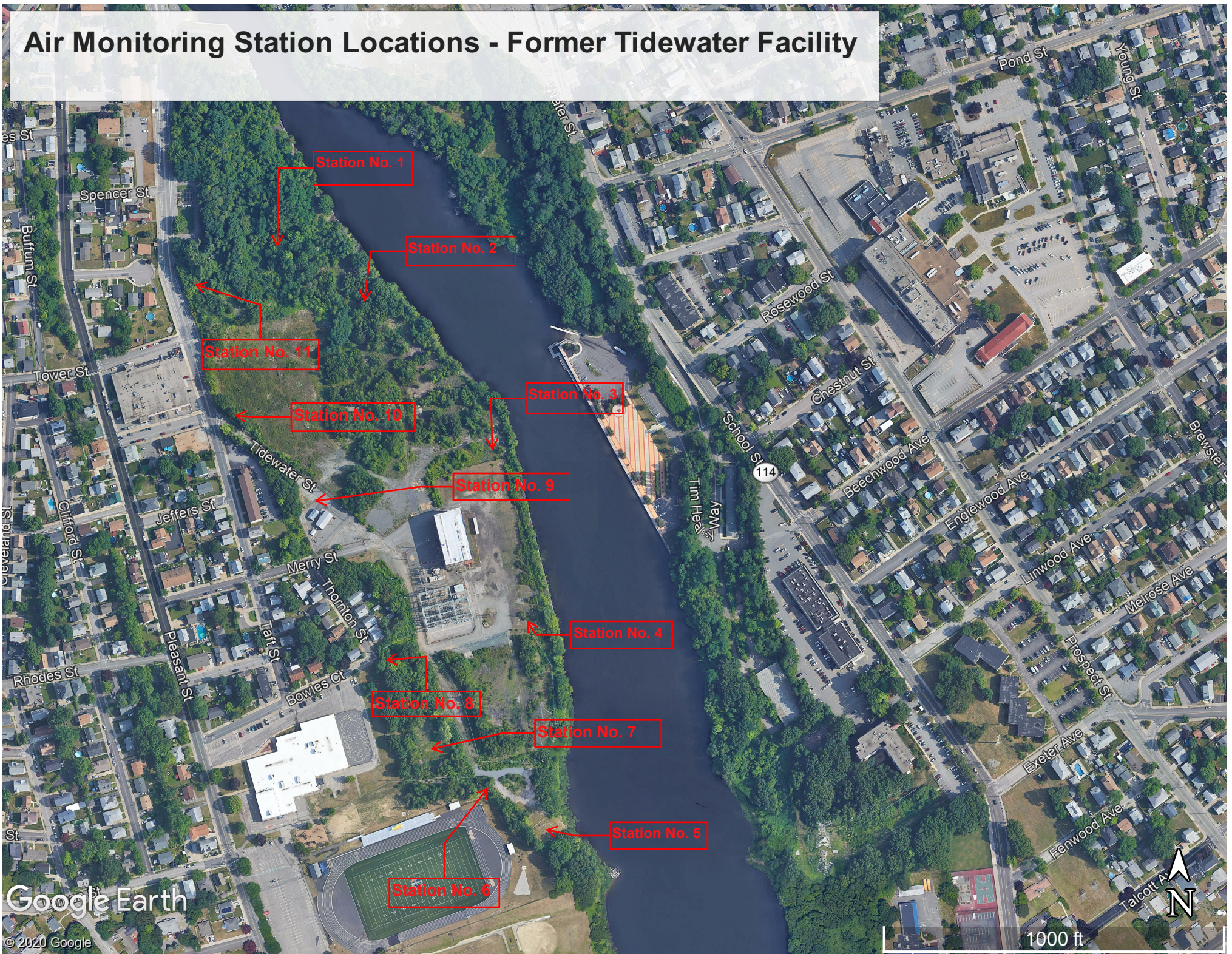


Prepared by National Grid for the Businesses and Residents Located Near the Former
Tidewater Facility

Air Quality Monitoring - Total Volatile Organic Compounds



Air Monitoring Station Locations - Former Tidewater Facility



**Prepared by National Grid for the Businesses and Residents Located Near the Former Tidewater Facility
Weekly Ambient Air Sampling Results**

Sample Date	Compounds				
	Benzene	Toluene	Ethylbenzene	Total Xylenes	Naphthalene
	(ppb v/v)				
12-3-20 UP STREAM	0.13	0.22	0.079	0.054	< 0.5
12-3-20 DOWN STREAM	0.13	0.2	0.073	0.05	< 0.5
12-10-20 UP STREAM	0.25	0.23	< 0.2	0.14	< 0.5
12-10-20 DOWN STREAM	0.17	0.2	< 0.2	< 0.7	< 0.5
12-16-20 UP STREAM	0.19	0.2	0.083	0.12	< 0.5
12-16-20 DOWN STREAM	0.13	0.16	0.078	0.094	< 0.5
12-23-20 UP STREAM	0.15	0.16	< 0.2	0.1	< 0.5
12-23-20 DOWN STREAM	0.13	0.11	< 0.2	< 0.7	< 0.5
12-30-20 UP STREAM	0.21	0.22	< 0.2	< 0.7	< 0.5
12-30-20 DOWN STREAM	0.089	< 0.2	< 0.2	< 0.7	< 0.5
1/7/21 UP STREAM	0.29	1.5	0.22	2.1	< 0.5
1/7/21 DOWN STREAM	0.16	0.27	0.086	0.42	< 0.5
1/14/21 UP STREAM	0.43	0.44	< 0.2	0.23	< 0.5
1/14/21 DOWN STREAM	0.4	0.52	0.076	0.3	< 0.5
1-21-21 UPSTREAM	0.15	0.28	0.1	< 0.7	0.24
1-21-21 DOWNSTREAM	0.18	0.23	0.11	0.1	< 0.5
1-28-21 UPSTREAM	0.21	0.19	< 0.2	< 0.7	< 0.5
1-28-21 DOWNSTREAM	0.21	0.17	< 0.2	< 0.7	< 0.5
2-4-21 UPSTREAM	0.2	1.1	0.23	1.4	0.18
2-4-21 DOWNSTREAM	0.23	0.29	0.26	0.29	< 1.1
2-11-21 UPSTREAM	0.19	0.12	< 0.2	< 0.7	< 0.5
2-11-21 DOWNSTREAM	0.17	< 0.2	< 0.2	< 0.7	< 0.5
2-18-21 UPSTREAM	0.46	2.8	0.11	0.25	< 0.5
2-18-21 DOWNSTREAM	0.31	0.42	0.13	0.45	< 0.5
2-25-21 UPSTREAM	< 0.2	0.16	< 0.2	0.16	< 0.5
2-25-21 DOWNSTREAM	0.13	< 0.2	0.081	0.3	< 0.5
3-4-21 UPSTREAM	0.2	0.21	< 0.2	0.18	0.27
3-4-21 DOWNSTREAM	0.15	0.12	< 0.2	0.16	< 0.5
3-11-21 UPSTREAM	0.18	0.17	< 0.2	0.23	0.3
3-11-21 DOWNSTREAM	0.18	0.22	0.23	1.0	< 0.5
3-18-21 DOWNSTREAM	0.44	1.6	0.19	0.67	< 0.5
Project Action Levels	6.2	80	230	23	20

Notes:

1. The Project Action Levels are consistent with the Air Quality Monitoring Plan developed for the Site.
2. Air samples are collected in stainless steel summa canisters over an approximately 8-hour period.
3. Air samples are analyzed by EuroFins TestAmerica of Burlington, VT.
4. Results and action levels are listed in parts per billion volume/volume (ppb v/v).
5. An upstream ambient air sample was not collected on March 18, 2021 due to a problem with the sampling equipment.