



Proactive by Design

GEOTECHNICAL  
ENVIRONMENTAL  
ECOLOGICAL  
WATER  
CONSTRUCTION  
MANAGEMENT



## MEMORANDUM

To: Joseph Martella, RIDEM

From: Dave Rusczyk, GZA

CC: Kenneth Lento, National Grid

Date: March 15, 2021

Re: Site Response Action Report  
Period February 21, 2021 through March 6, 2021  
Former Tidewater Facility  
Pawtucket, Rhode Island  
RIDEM Case No. 95-022 / Site Remediation File No. SR-26-0934

---

### SITE ACTIVITIES PERFORMED

- Charter Contracting Company, LLC (Charter) continued activities related to implementation of the remedial construction work. These activities included:
  - Continued installation of the steel sheetpiles for the containment wall.
  - Continued abandonment of the former screenwell structure.
  - Continued demolition of former concrete slabs and foundations in the northern portion of the Site.
  - Continued installation of the engineered cap proximate and beneath the transmission towers.
  - Regrading of the shoreline in the southern portion of the Site.
  - Collection of waste characterization samples from the crystallized naphthalene source area.
  - Locating and exposing the concrete vault at source area #2 and collection of a waste characterization sample.
  - Removal of portions of the former raceway extending between the northern and southern portions of the Site.
- GZA continued to perform a monitoring program to evaluate turbidity levels within the Seekonk River adjacent to the Site. These readings were obtained inside and outside the turbidity curtain.
- Perimeter air monitoring was performed during the period covered by this report with 11 air monitoring stations (4 solar powered units and 7 electrically powered units). These stations measured and recorded respirable dust and total volatile organic compounds (TVOC) concentrations continuously 24 hours per day/7 days per week. No exceedances of the TVOC (0.5 parts per million), benzene (0.35 parts per million), or respirable dust (0.150  $\mu\text{g}/\text{m}^3$ ) perimeter action levels were noted during the period covered by this report except for the following:
  - On February 26, 2021 at approximately 11:36 pm, respirable dust levels were detected at Station 2 above the respirable dust threshold level.
  - On February 26, 2021 at approximately 5:30 am, TVOC concentrations were detected at Station 4 above the TVOC threshold level.



- On February 20, 2021 at approximately 10:00 am and 11 pm and February 22, 2021 at 7 pm, TVOC concentrations were detected at Station 9 above the TVOC threshold level.
- On February 27, 2021 at approximately 5:43 pm, respirable dust levels were detected at Station 1 above the respirable dust threshold level.
- On February 28, 2021 between 12:31 am and 5:15 am, TVOC concentrations were detected at Station 2 above the TVOC threshold level.

No work activities were being performed at these times and these isolated elevated respirable dust and TVOC levels were not attributed to Site work activities. The air monitoring results were posted to the project website and the bulletin boards at the ends of Tidewater Street and Bowles Court and are also attached to this report.

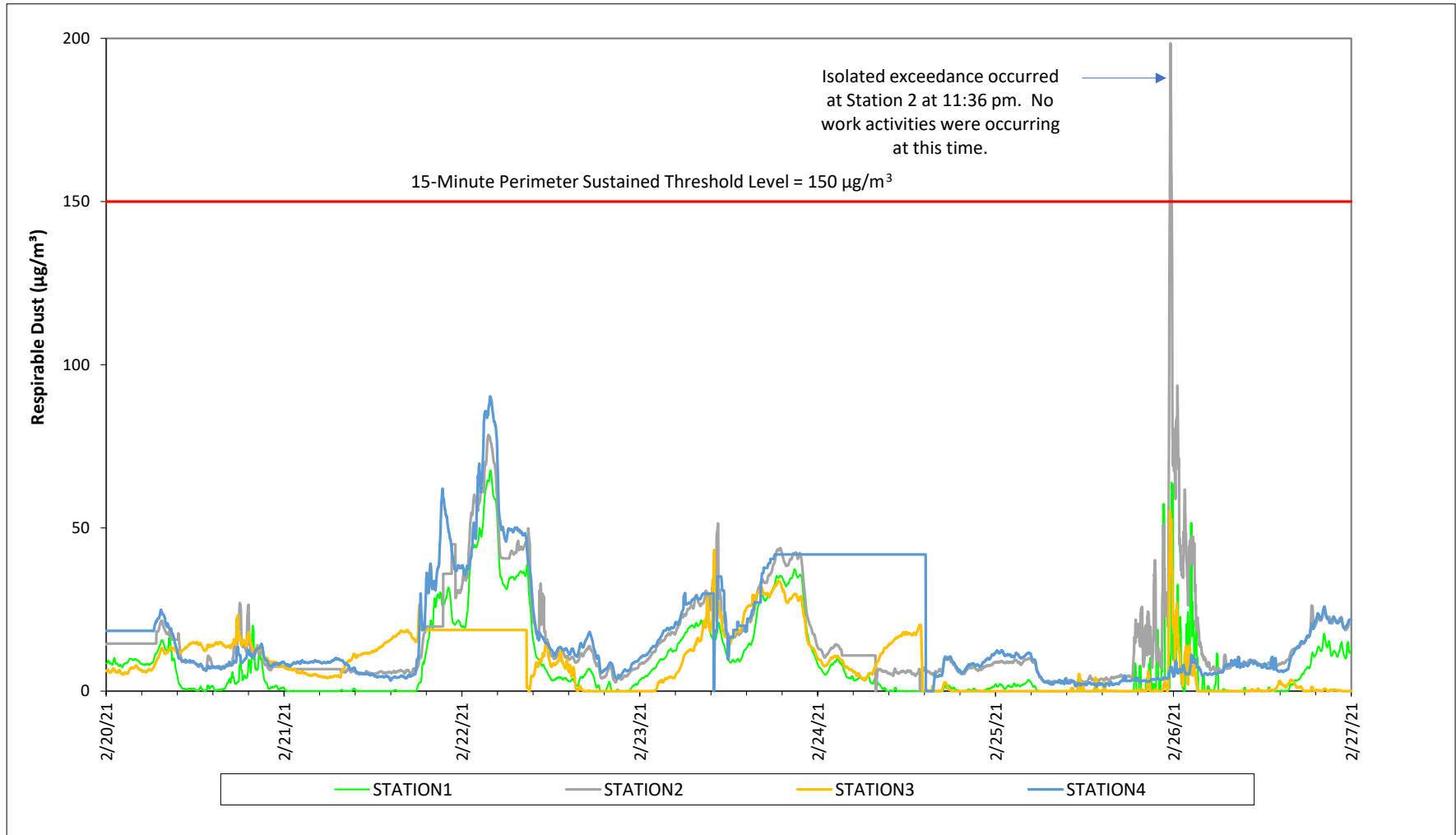
- GZA collected ambient air samples from upwind and downwind locations on February 25, 2021 and March 4, 2021 for laboratory analysis for benzene, toluene, ethylbenzene, xylenes, and naphthalene. The analytical results from these samples indicated there were no exceedances of the project action levels. The analytical results were posted to the project website and the bulletin boards at the ends of Tidewater Street and Bowles Court and are also attached to this report.

#### ANTICIPATED SITE ACTIVITIES TO BE PERFORMED WITHIN NEXT 2 WEEKS

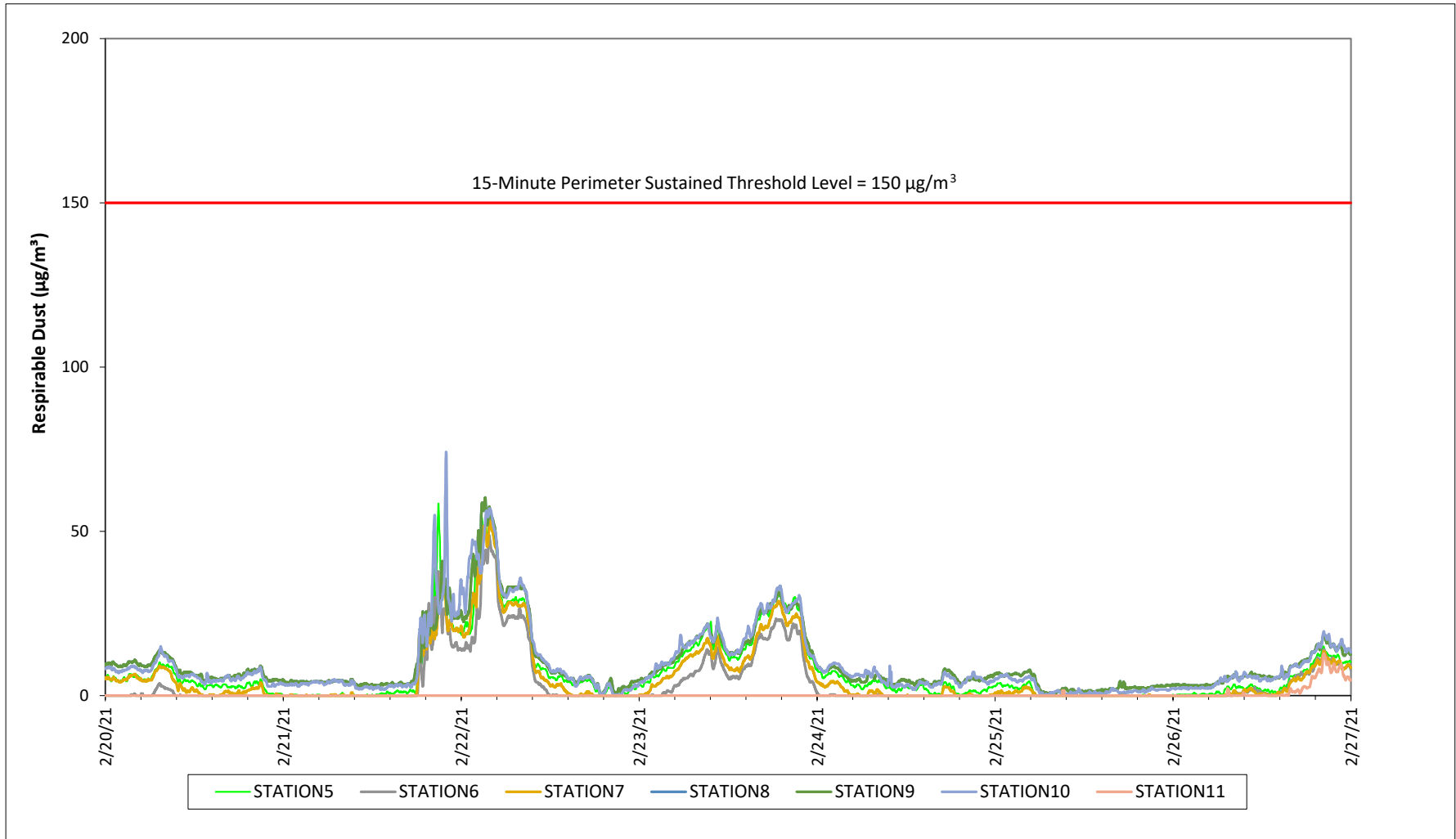
- Continued installation of the steel sheetpiles for the new containment wall.
- Continued upland demolition activities.
- Continued installation of the engineered cap proximate and beneath the transmission towers in the southern portion of the Site.
- Continued regrading of the shoreline in the southern portion of the Site.
- Abandonment of the former screen well structure.

Please contact Kenneth Lento at 781-907-3655 if you have any questions or comments.

Prepared by National Grid for the Businesses and Residents Located Near the Former  
Tidewater Facility  
Air Quality Monitoring - Respirable Dust



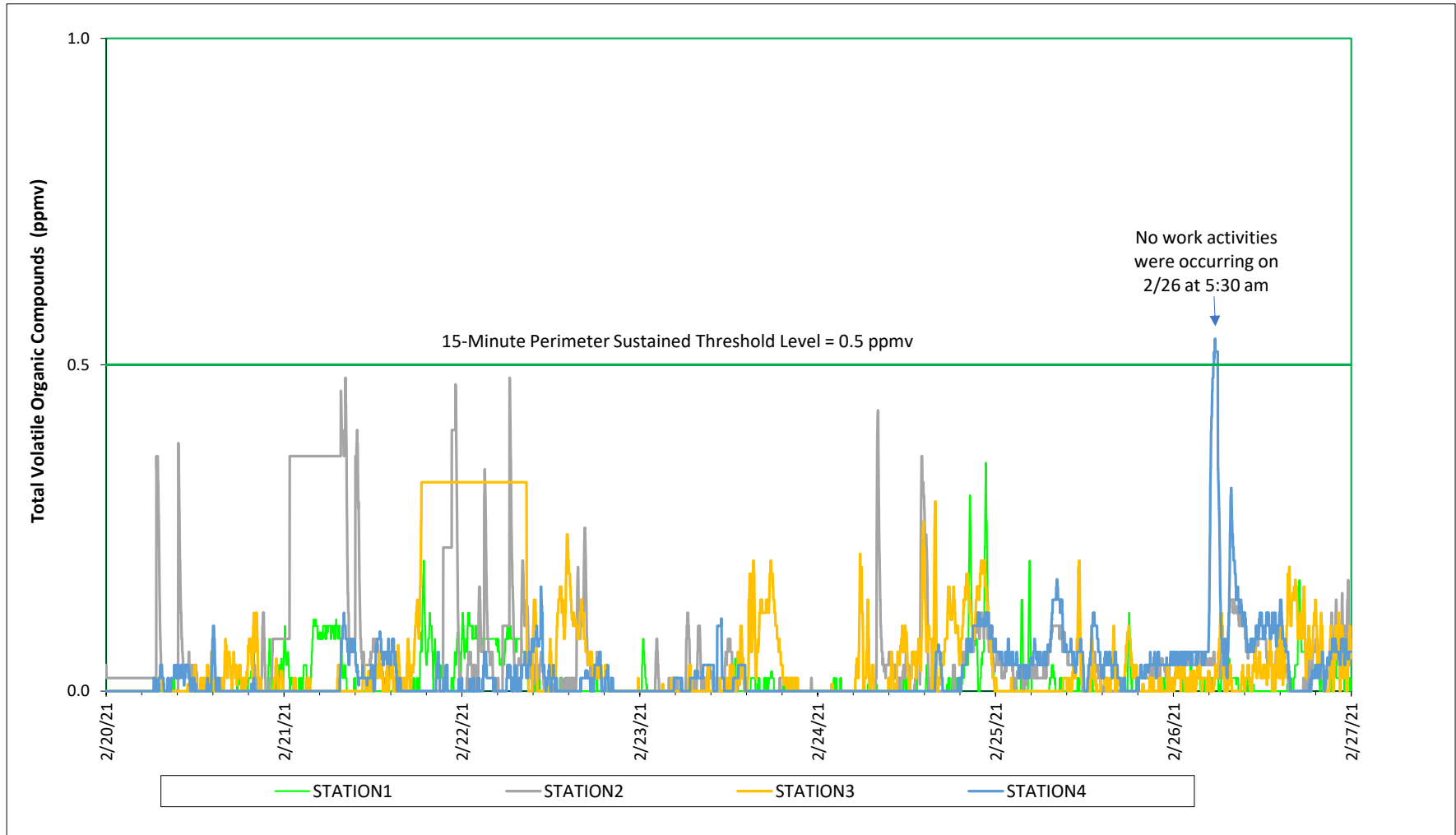
Prepared by National Grid for the Businesses and Residents Located Near the Former  
Tidewater Facility  
Air Quality Monitoring - Respirable Dust





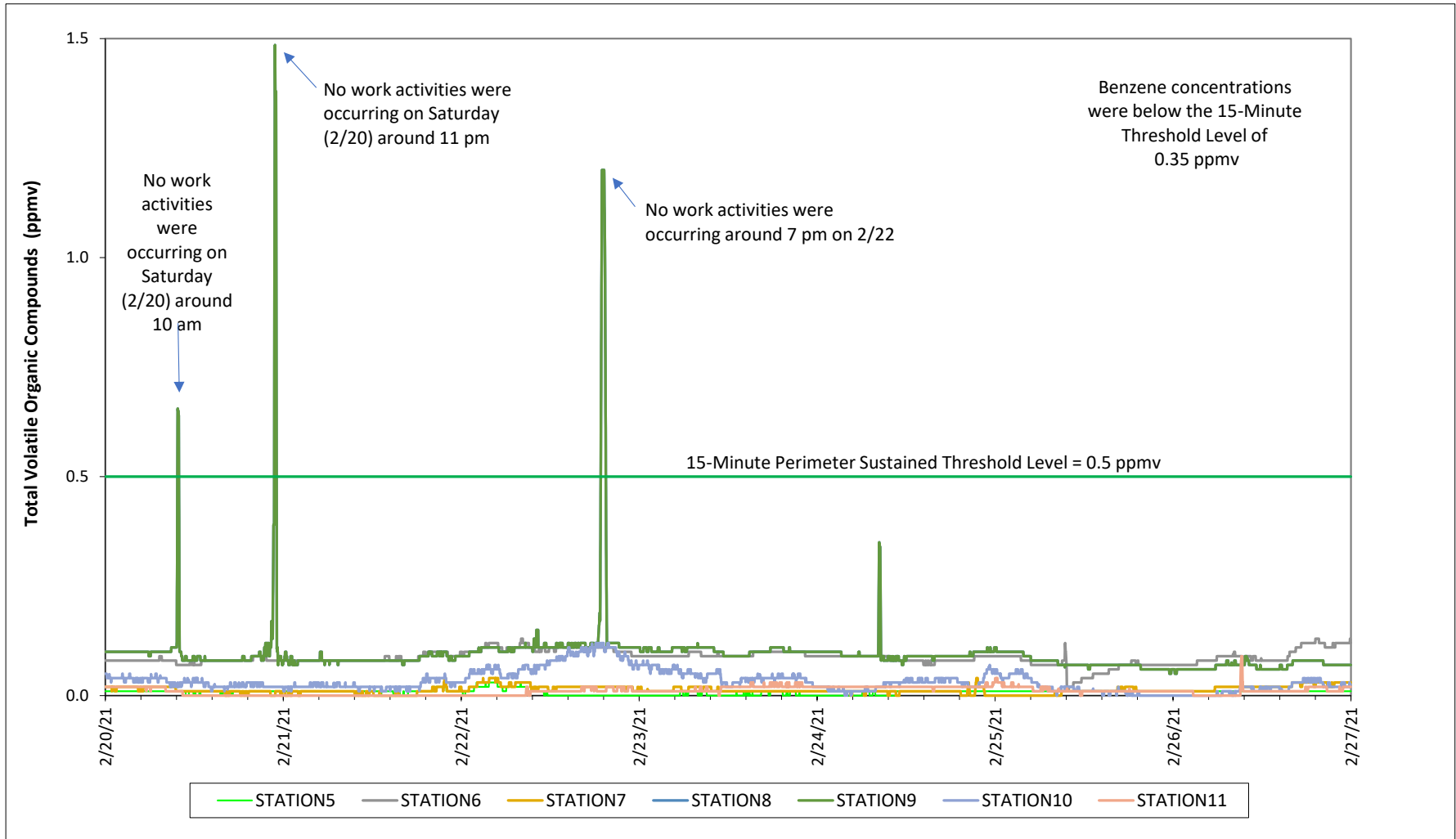
Prepared by National Grid for the Businesses and Residents Located Near the Former  
Tidewater Facility

Air Quality Monitoring - Total Volatile Organic Compounds

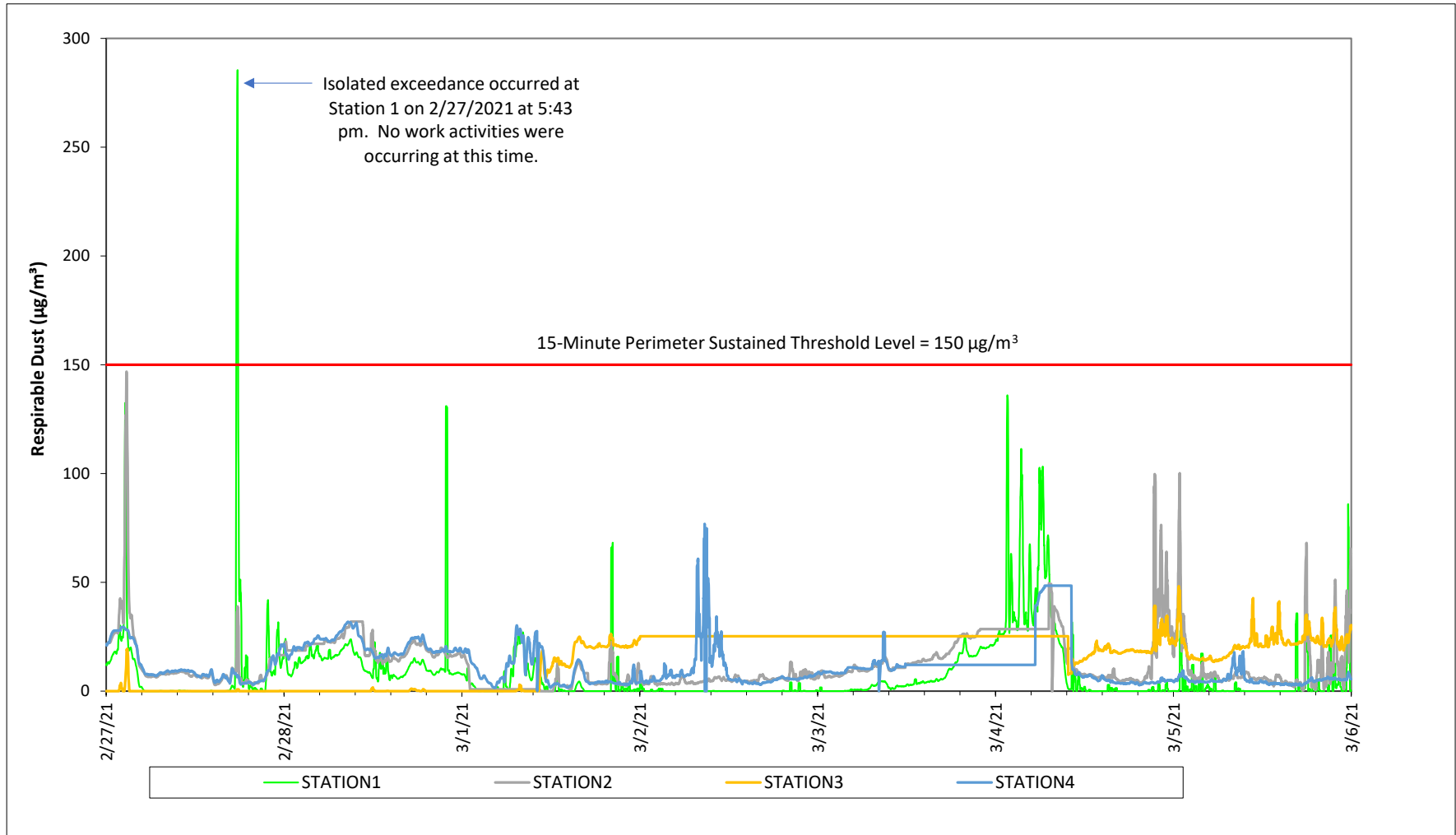


Prepared by National Grid for the Businesses and Residents Located Near the Former  
Tidewater Facility

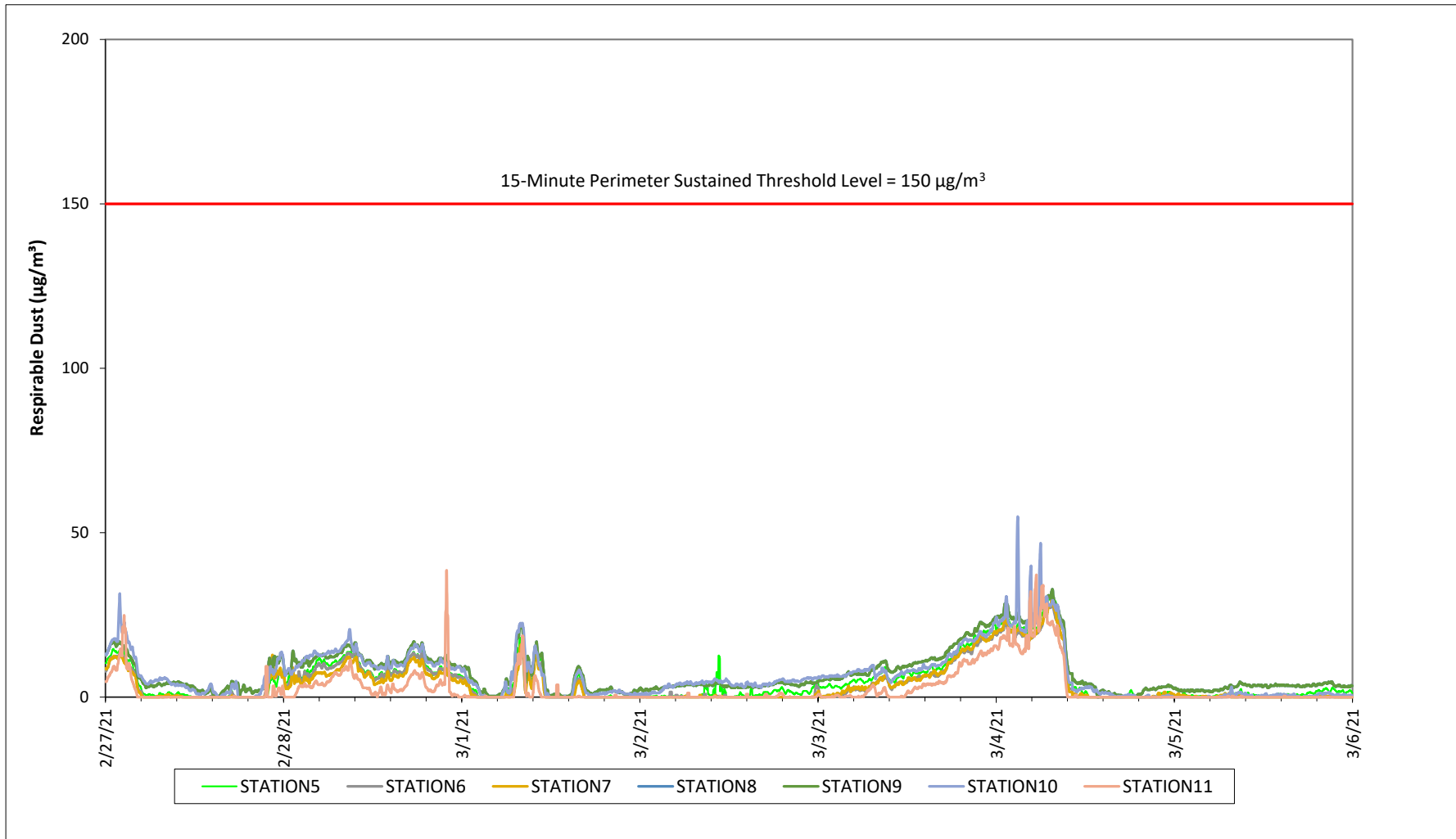
Air Quality Monitoring - Total Volatile Organic Compounds



Prepared by National Grid for the Businesses and Residents Located Near the Former  
Tidewater Facility  
Air Quality Monitoring - Respirable Dust

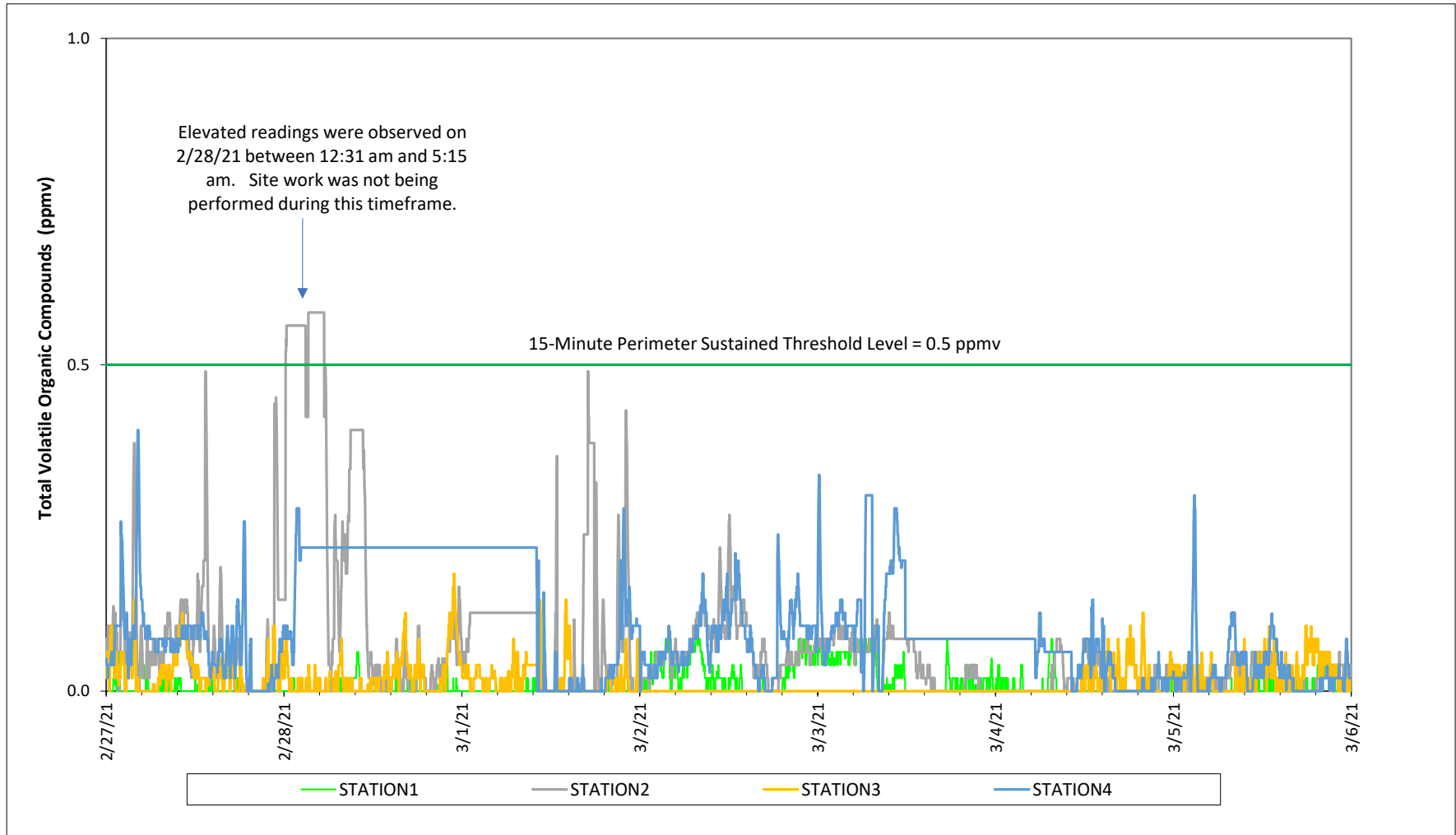


Prepared by National Grid for the Businesses and Residents Located Near the Former  
Tidewater Facility  
Air Quality Monitoring - Respirable Dust



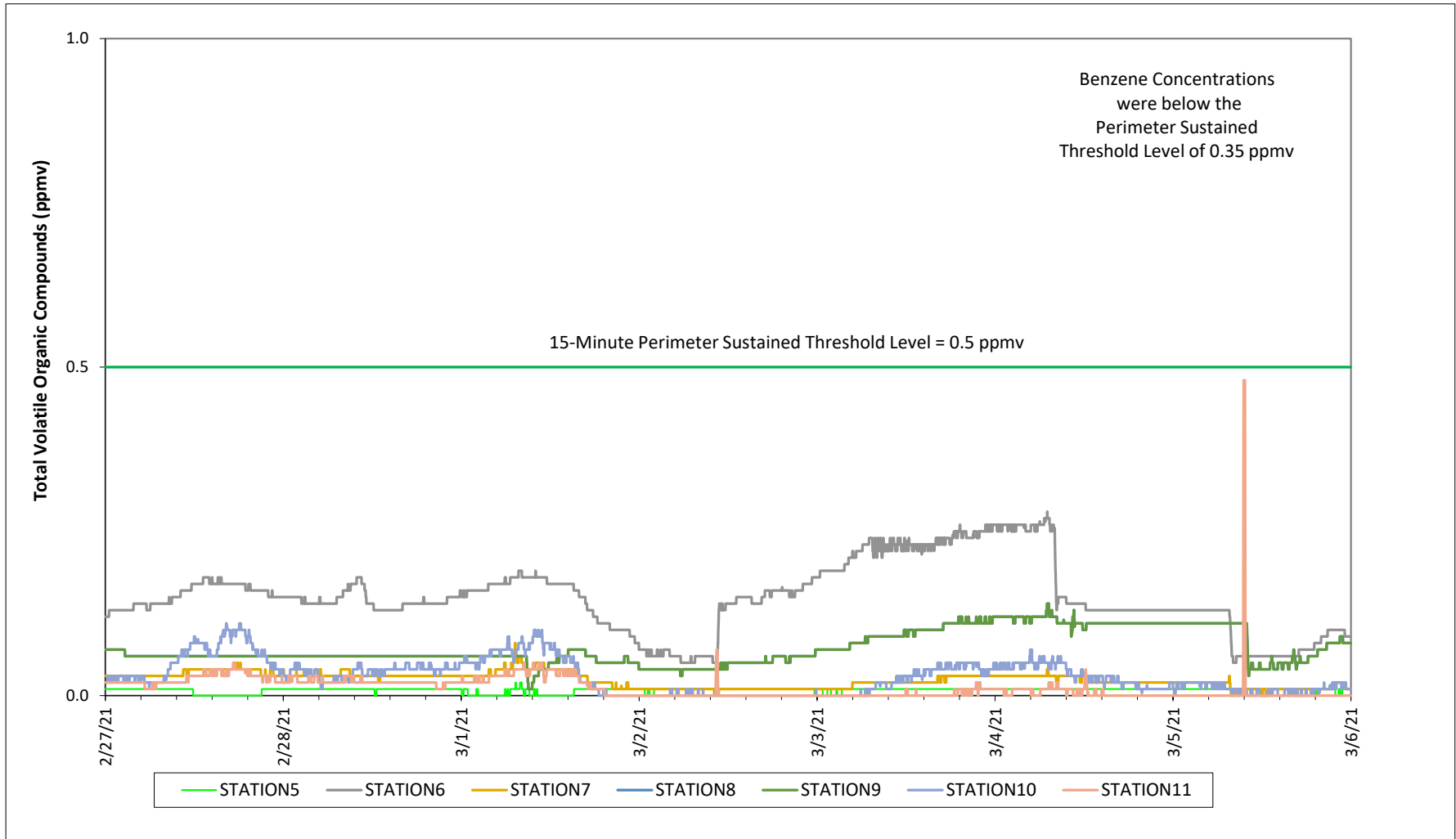
Prepared by National Grid for the Businesses and Residents Located Near the Former  
Tidewater Facility

Air Quality Monitoring - Total Volatile Organic Compounds



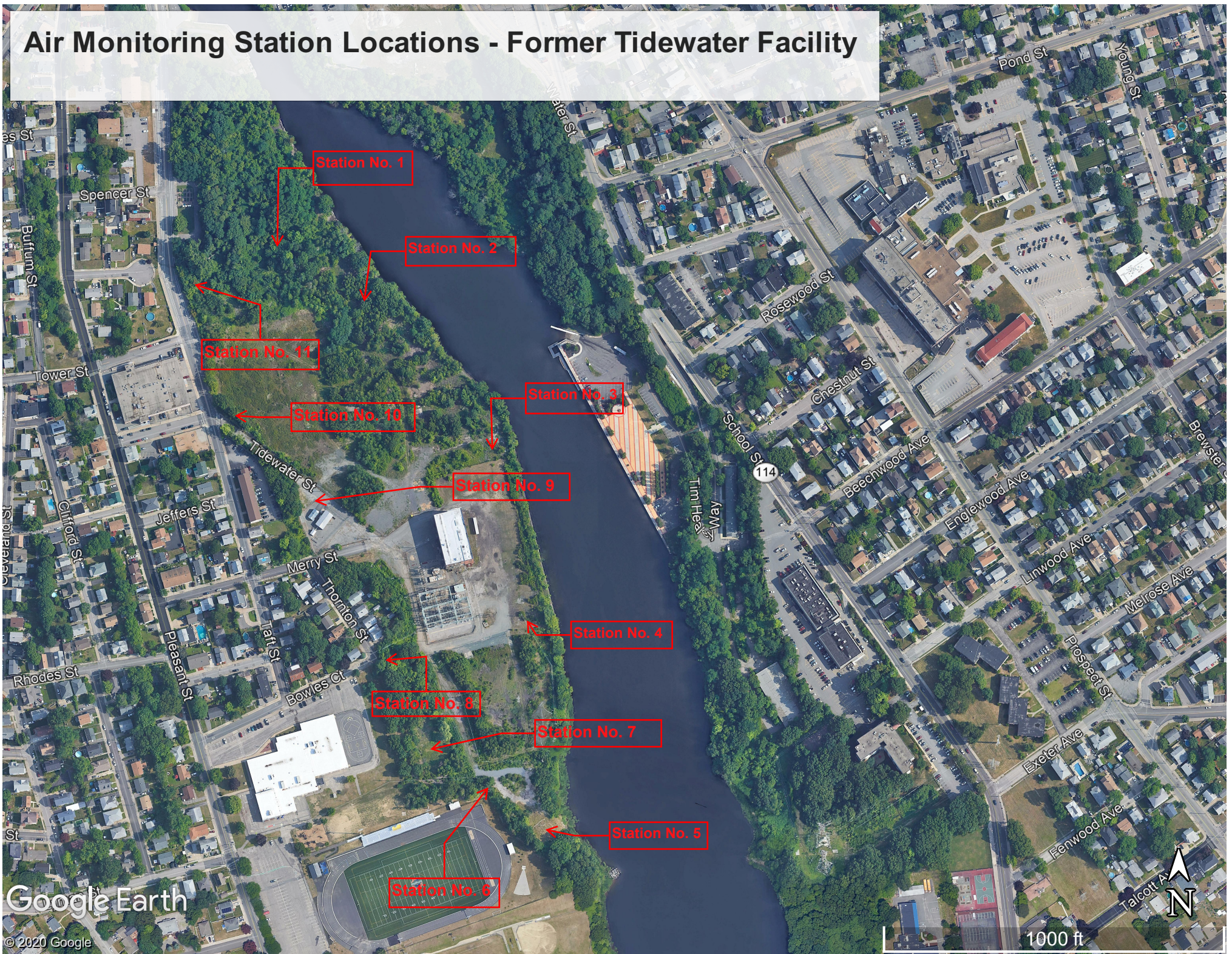
Prepared by National Grid for the Businesses and Residents Located Near the Former  
Tidewater Facility

Air Quality Monitoring - Total Volatile Organic Compounds





# Air Monitoring Station Locations - Former Tidewater Facility





**Prepared by National Grid for the Businesses and Residents Located Near the Former Tidewater Facility  
Weekly Ambient Air Sampling Results**

Sample Date	Compounds				
	Benzene	Toluene	Ethylbenzene	Total Xylenes	Naphthalene
	(ppb v/v)				
12-3-20 UP STREAM	0.13	0.22	0.079	0.054	< 0.5
12-3-20 DOWN STREAM	0.13	0.2	0.073	0.05	< 0.5
12-10-20 UP STREAM	0.25	0.23	< 0.2	0.14	< 0.5
12-10-20 DOWN STREAM	0.17	0.2	< 0.2	< 0.7	< 0.5
12-16-20 UP STREAM	0.19	0.2	0.083	0.12	< 0.5
12-16-20 DOWN STREAM	0.13	0.16	0.078	0.094	< 0.5
12-23-20 UP STREAM	0.15	0.16	< 0.2	0.1	< 0.5
12-23-20 DOWN STREAM	0.13	0.11	< 0.2	< 0.7	< 0.5
12-30-20 UP STREAM	0.21	0.22	< 0.2	< 0.7	< 0.5
12-30-20 DOWN STREAM	0.089	< 0.2	< 0.2	< 0.7	< 0.5
1/7/21 UP STREAM	0.29	1.5	0.22	2.1	< 0.5
1/7/21 DOWN STREAM	0.16	0.27	0.086	0.42	< 0.5
1/14/21 UP STREAM	0.43	0.44	< 0.2	0.23	< 0.5
1/14/21 DOWN STREAM	0.4	0.52	0.076	0.3	< 0.5
1-21-21 UPSTREAM	0.15	0.28	0.1	< 0.7	0.24
1-21-21 DOWNSTREAM	0.18	0.23	0.11	0.1	< 0.5
1-28-21 UPSTREAM	0.21	0.19	< 0.2	< 0.7	< 0.5
1-28-21 DOWNSTREAM	0.21	0.17	< 0.2	< 0.7	< 0.5
2-4-21 UPSTREAM	0.2	1.1	0.23	1.4	0.18
2-4-21 DOWNSTREAM	0.23	0.29	0.26	0.29	< 1.1
2-11-21 UPSTREAM	0.19	0.12	< 0.2	< 0.7	< 0.5
2-11-21 DOWNSTREAM	0.17	< 0.2	< 0.2	< 0.7	< 0.5
2-18-21 UPSTREAM	0.46	2.8	0.11	0.25	< 0.5
2-18-21 DOWNSTREAM	0.31	0.42	0.13	0.45	< 0.5
2-25-21 UPSTREAM	< 0.2	0.16	< 0.2	0.16	< 0.5
2-25-21 DOWNSTREAM	0.13	< 0.2	0.081	0.3	< 0.5
3-4-21 UPSTREAM	0.2	0.21	< 0.2	0.18	0.27
3-4-21 DOWNSTREAM	0.15	0.12	< 0.2	0.16	< 0.5
<b>Project Action Levels</b>	<b>6.2</b>	<b>80</b>	<b>230</b>	<b>23</b>	<b>20</b>

**Notes:**

1. The Project Action Levels are consistent with the Air Quality Monitoring Plan developed for the Site.
2. Air samples are collected in stainless steel summa canisters over an approximately 8-hour period.
3. Air samples are analyzed by EuroFins TestAmerica of Burlington, VT.
4. Results and action levels are listed in parts per billion volume/volume (ppb v/v).