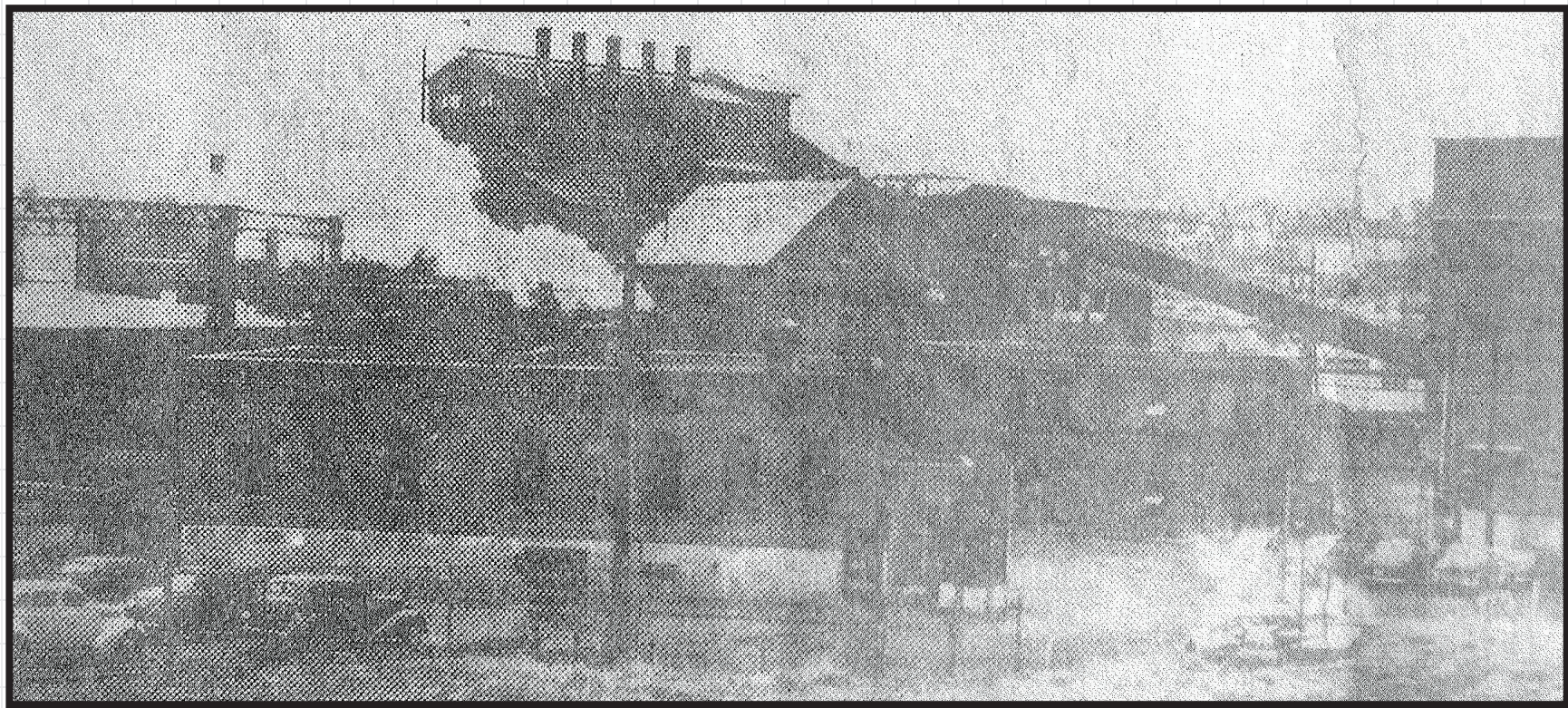
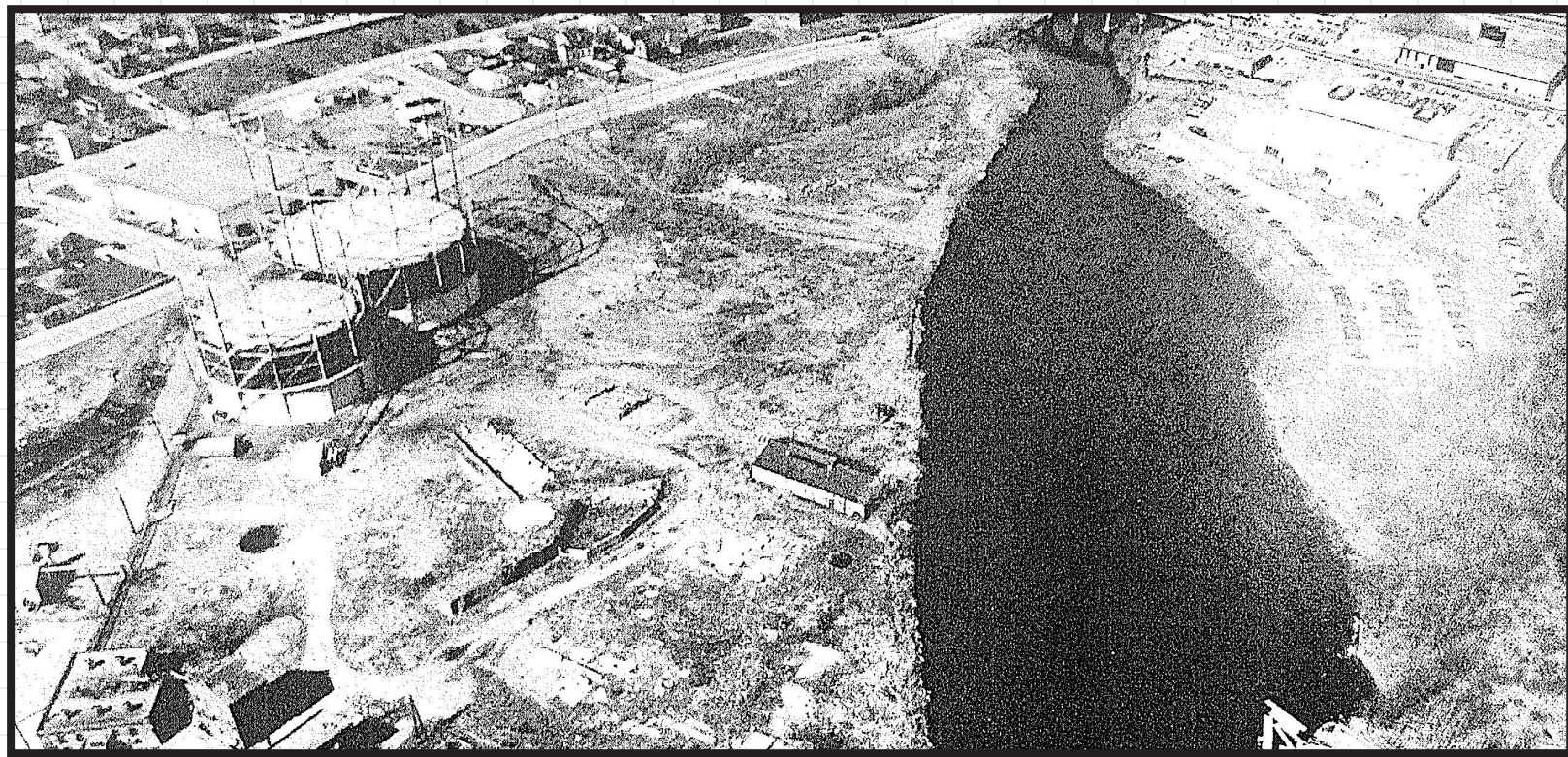


SITE HISTORY

The Tidewater Site has a long history of industrial use dating back to at least 1881. Site operations, including the historic Manufactured Gas Plant (MGP), provided essential electric and gas service to the community for over 130 years. Large areas of the Site are currently vacant. Current operations include a natural gas regulation facility, electrical transmission facilities and an electrical switch and substation facility.



1881

The Pawtucket Gas Company constructs the Tidewater Manufactured Gas Plant (MGP) to produce manufactured gas from coal and oil using industrial processes.

1908

Blackstone Valley Gas and Electric Company (BVG&E) purchases the Pawtucket Gas Company.

1938

The Great Hurricane of 1938 causes significant damage to the MGP and power plant.

1954

Majority of MGP operations ceases, though oil gas is produced on an as-needed basis to supplement available natural gas supply until approximately 1968.

1961

Valley Gas Company (VGC) acquires the MGP from BVG&E.

1968

The Blackstone Valley Electric Company (BVEC) acquires the power plant from BVG&E. The MGP is officially decommissioned. The City of Pawtucket acquires portions of the southernmost section.

1995

Rhode Island Department of Environmental Management (RIDEM) issues a Letter of Responsibility to BVEC and VGC and the former Tidewater facility becomes the Tidewater Site.

2006

National Grid acquires the Rhode Island gas utility and the gas portion of the Tidewater Site.

Period of MGP Operations

National Grid Ownership of the Former Gas Plant Area and the North Fill Area

1880

1900

1920

1940

1960

1980

2000

2020

Period of Active Power Plant Operations

National Grid Ownership of the Former Power Plant Area and the South Fill Area

1890

Pawtucket Gas Company constructs the power plant.

1923

Power plant changes its primary fuel from coal to oil.

1962

The transmission towers are first evident in historical records for the power plant.

1975

The power plant is officially decommissioned.

1986

Site investigations begin.

2000

National Grid acquires the Rhode Island electric utility and the electric portion of the Tidewater Site.

2009—2016

- Facility upgrades include:
- Natural Gas Regulating Station upgrades
 - Gasholders Nos. 7 and 8 decommissioned and demolished
 - Pawtucket No.1 Substation and Switching Station modifications
 - Former gas buildings demolished
 - Repair of the south washout area

