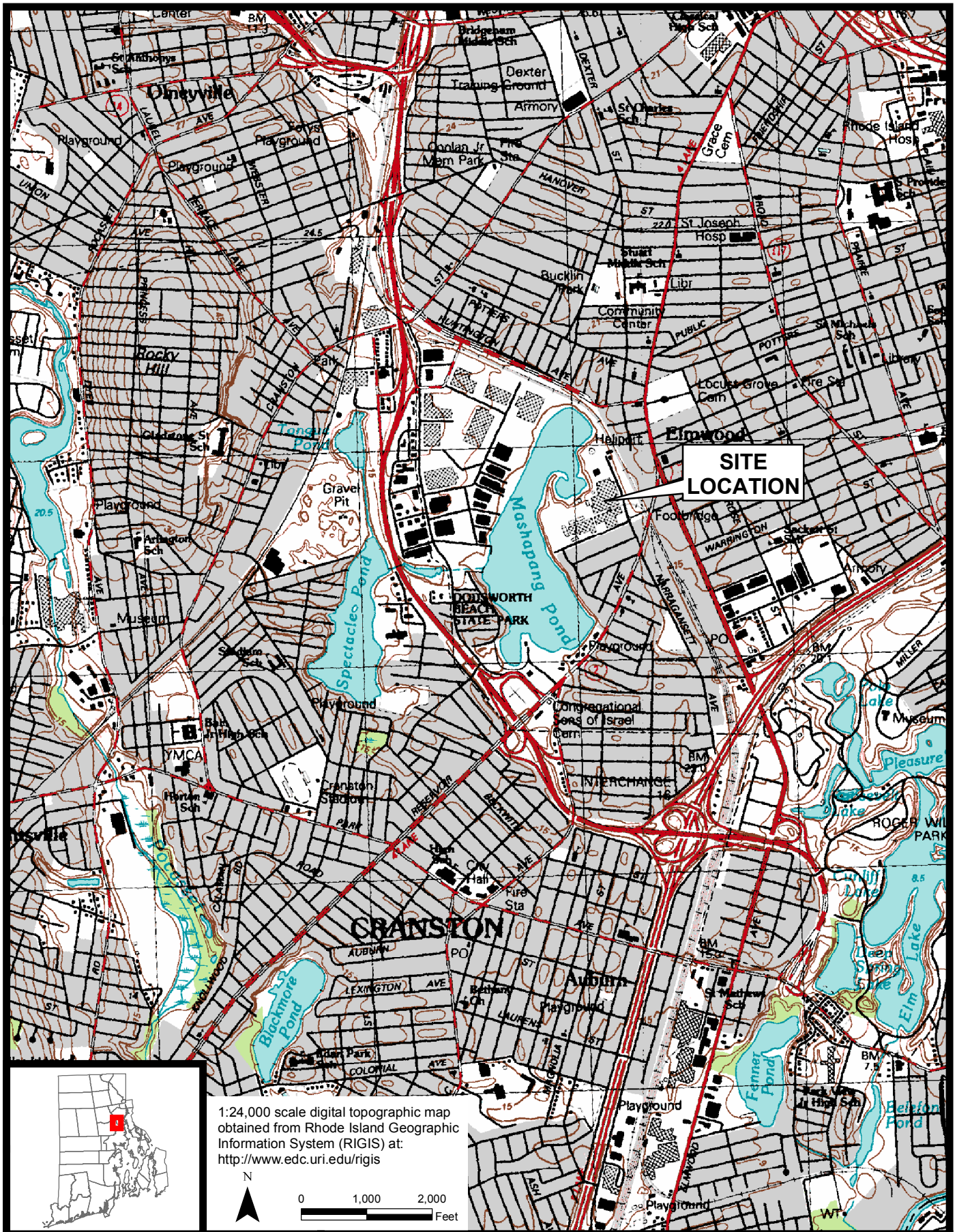


Textron, Inc.
Former Gorham Manufacturing Facility, Providence, RI
Remedial Action Completion Report: Phase II Area – Mashapaug Inner Cove,
Phase III Area – Northeast Upland And Parcel C
Project No.: 3652160001
February 12, 2016



FIGURES



Former Gorham Manufacturing Site
 333 Adelaide Avenue
 Providence, RI



Site Location Map

Project 3652-16-0001

Figure 1



Legend

Approximate Parcel Boundary

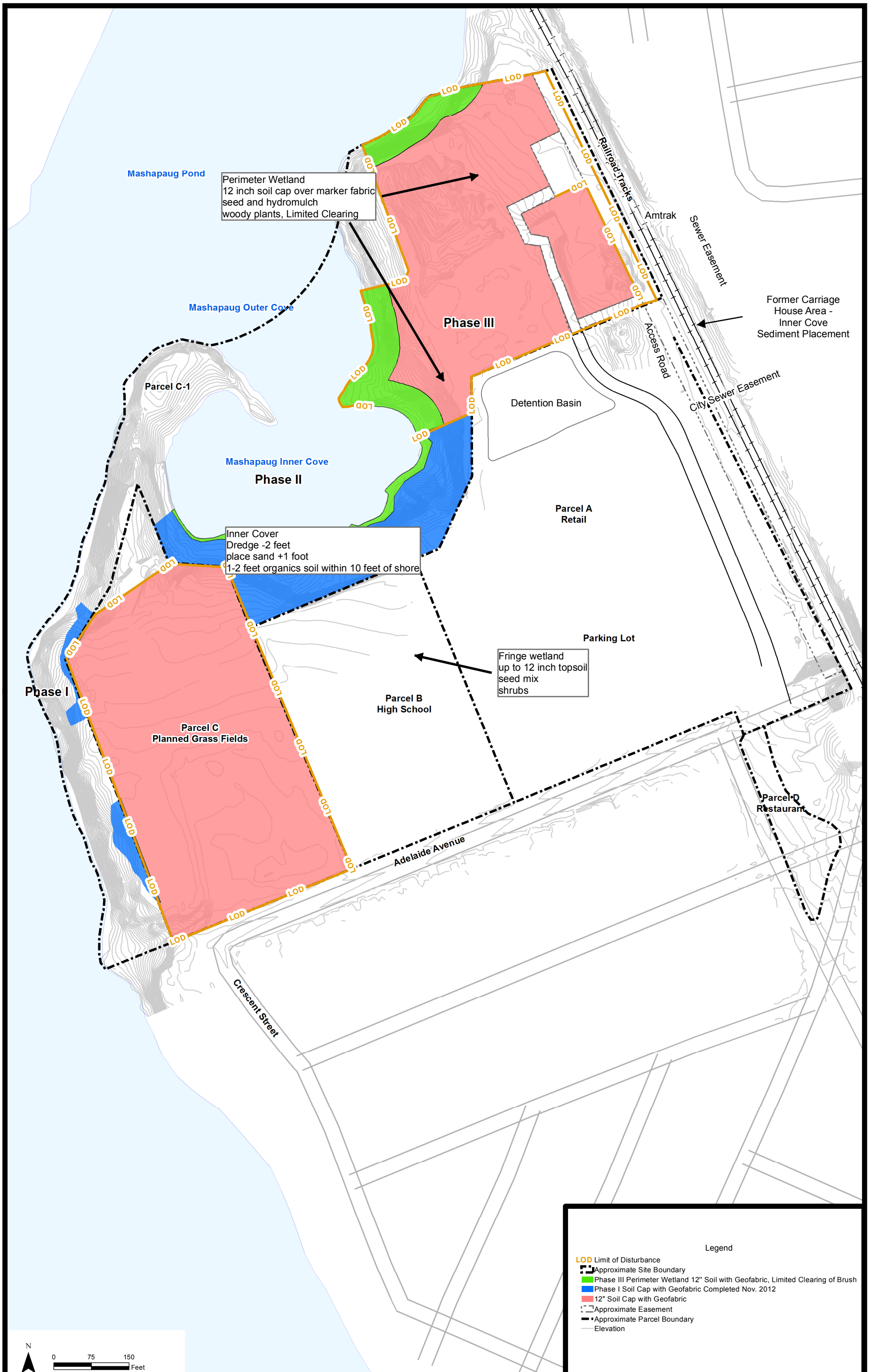
Note: 2011 Ortho photo obtained from Rhode Island Geographic Information System (RIGIS)

Former Gorham Manufacturing Site
 425 Adelaide Avenue
 Providence, RI



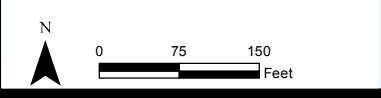
Site Plan

Project 3652-16-0001 Figure 2



Legend

- LOD Limit of Disturbance
- Approximate Site Boundary
- Phase III Perimeter Wetland 12" Soil with Geofabric, Limited Clearing of Brush
- Phase I Soil Cap with Geofabric Completed Nov. 2012
- 12" Soil Cap with Geofabric
- Approximate Easement
- Approximate Parcel Boundary
- Elevation



Former Gorham Manufacturing Site
333 Adelaide Avenue
Providence, RI



Three Phased Remediation
Project 3652-16-0001
Figure 3

