

INLET SUMMARY SHEET

INLET: **Little Pond Cove (#11)**

DATE AND TIME SURVEYED AND TIDE STAGE: 23 March 1999, 09:50-10:10. Low at 05:41 (-0.1), High at 12.12 (+2.9) at Sakonnet Station #1145.

INLET CLASS: **D**

GEOMORPHOLOGY: Small, permanent channel through bayhead pocket beach that shelters a coastal pond. Small pond, no conspicuous flood- or ebb-tidal delta.

PRINCIPAL RESOURCES AT RISK: Some marshes are associated with Little Pond. Birds, including waterfowl (mergansers, buffleheads, gadwalls), and gulls utilize the area, which is also a major seabird feeding area in the winter. The beach associated with Little Pond is used for recreational swimming and surfing.

PRELIMINARY PROTECTION STRATEGY: The objective is to prevent oil from entering the pond by constructing a sediment dike (approximately 100 ft. long) across the small channel that connects the pond with the ocean, using sediment from the intertidal zone along the beach. Care should be taken not to disturb any birds that may be nesting on the beach. Dune sand and vegetation should not be disturbed during this process.

Collection Point	Description	Access	Proposed Equipment
	Mixed sand & gravel beach	From the town of Little Compton, go east on Simmons Rd, then south on Maple Ave. to Shaw Rd. Turn west on Shaw Rd. and then turn south to access development west of Little Pond Cove. Access inlet by driving on the beach. Access is also possible from the west side of inlet.	Bulldozer, front-end loader.

RESOURCES REQUIRED (if full strategy is implemented): Construction equipment (such as front-end loaders, bulldozers, or other similar equipment that are available) for construction of the sediment dike. Standard beach cleaning equipment and personnel necessary for beach clean-up operations.

CONTACT INFORMATION:

Rhode Island Dept. of Env. Mgmt. Emergency Response:	(401) 222-3070
U.S. Fish and Wildlife:	(401) 364-9124
U.S. Coast Guard:	(401) 435-2300
Coastal Resources Management Council:	(401) 783-3370
Little Compton EMA Director:	(401) 635-4529

OTHER COMMENTS:

11 - LITTLE POND COVE



From USGS 7.5' topographic quad: Sakonnet Point, Rhode Island, published: 1955, photorevised 1970

SCALE 1 : 24,000



MILES



KILOMETERS

98



INLET SKETCH MAP

Inlet Name LITTLE POND COVE

Inlet Number 11

Recorder(s) MOH/LC/TH

Date/Time 23 MARCH 1999; 1000

Tide Stage FLOOD

Inlet Classification D

CHECKLIST

- North Arrow
- Scale
- Substrate Type

66

LEGEND

○^R
Red Channel
Marker Buoy

○^G
Green Channel
Marker Buoy

∨ ∨
Marsh

○○○○
Riprap

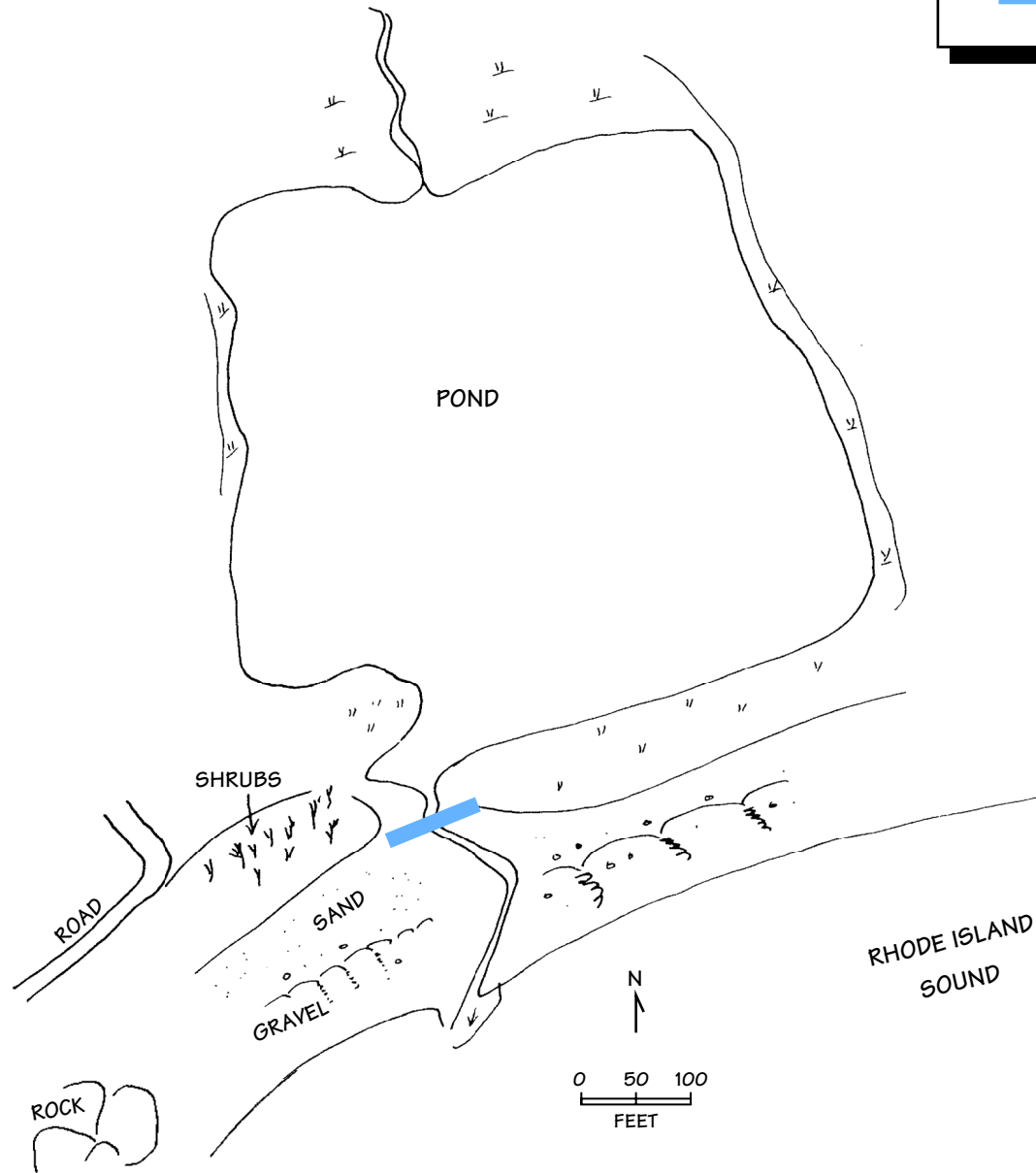
●●●●
Sand

⊙⊙⊙⊙
Sand & Gravel

⊙⊙⊙⊙
Gravel

POTENTIAL PROTECTION STRATEGY (FLOOD TIDE)

Sediment Dike

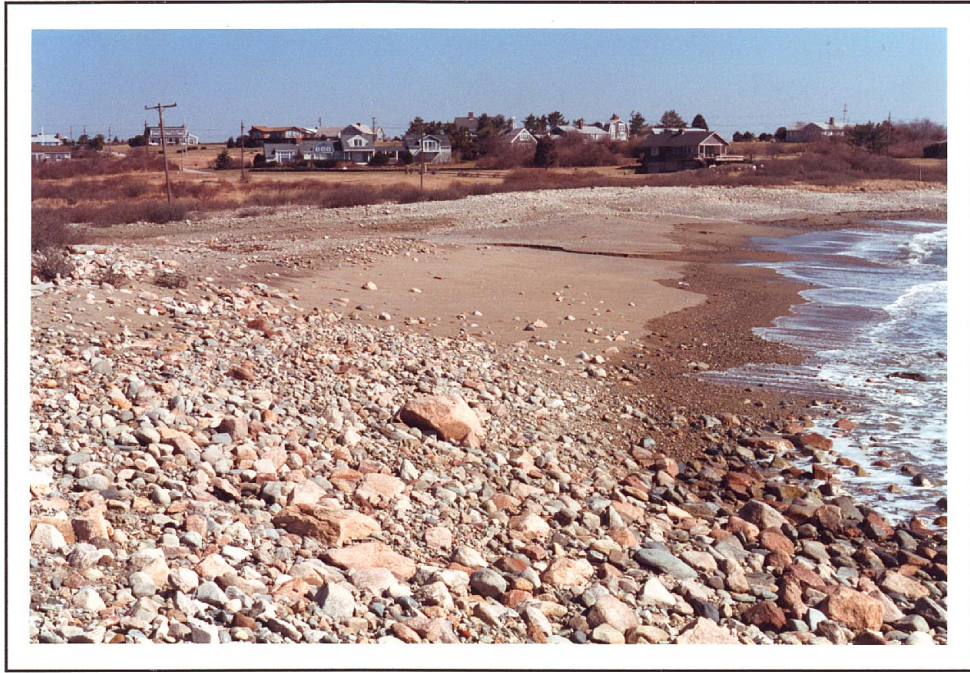


11 - LITTLE POND COVE



From USGS NAPP: roll #8356, frame #46; March 1995; scale -1:40,000
100

0 1 2 MILES



Looking east at channel at low tide on 23 March 1999, Little Pond Cove (#11).



Looking north at low tide on 17 March 1999, Little Pond Cove (#11).