

Operation and Maintenance Manual

Rhode Island

Residential Systems

CEN Models

Rev. 11-28-23



Certified to
NSF/ANSI Standards 40 & 245

Please Note:
Product warranty requires proper system operation
and maintenance as described in this Manual.



Operation and Maintenance Manual – Residential Systems

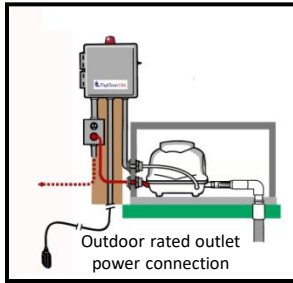
Introduction

This manual describes operation and maintenance (O&M) procedures necessary to assure proper function and operation of Fuji Clean USA wastewater treatment systems, including start-up and routine procedures. The manual is divided into the following sections:

Sections

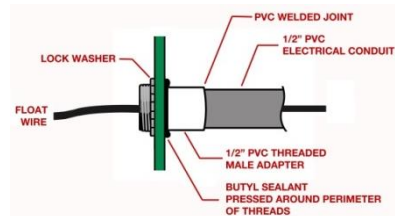
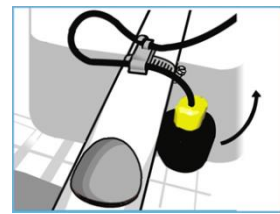
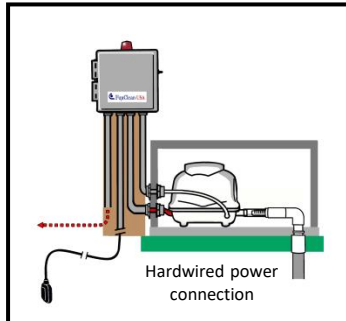
| | |
|-------------------------------------------------------------------|---------|
| 1. Installation Overview..... | Page 3 |
| 2. Treatment Process Overview..... | Page 4 |
| 3. System Components and Specifications | |
| a. Summary | Page 5 |
| b. FujiMACR II Blowers..... | Page 6 |
| c. Alarm Panel | Page 8 |
| d. Float Switch | Page 12 |
| e. Wi-Fi Communication Device | Page 13 |
| 4. Maintenance Program with Scheduled Maintenance Procedures..... | Page 15 |
| 5. System Inspection Checklist | Page 22 |
| 6. Troubleshooting Guide..... | Page 23 |

Section 1. Installation Overview

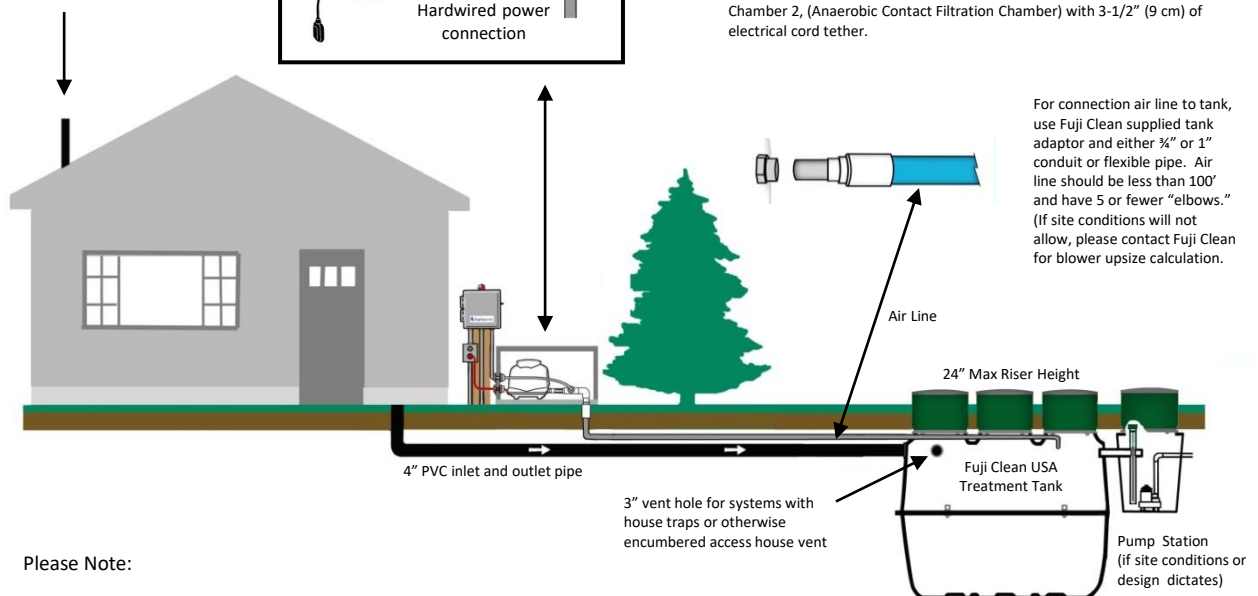


System vents through house vent system. For houses with house traps installed, vent system separately through vent hole.

System Controller/Alarm (supplied by Fuji Clean USA) Suffolk County requires FujiMACR11 series blower power connection to be hardwired to control panel.



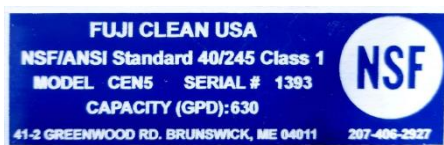
For connection of SJE Rhombus Signalmaster float switch cord to alarm panel, drill hole in riser and use male fitting and electrical conduit. Plug fitting with sealant standard that meets ASTM C990-96 to assure water-tight seal and to prevent septic gas transmission into control panel. Install on the pumpback line using the provided hose clamp and mounting fixture in the center of Chamber 2, (Anaerobic Contact Filtration Chamber) with 3-1/2" (9 cm) of electrical cord tether.



Please Note:

1. Fuji Clean systems are designed to accept straight septic wastewater and do not require a preceding septic or settling tank.
2. "Clearwater" water softener backwash should be discharged directly to a separate drywell.

Using grommets or a waterproof adhesive, labels meeting NSF standards (supplied by Fuji Clean USA) shall be affixed in two locations, inside the inlet riser and on the inside of the controller.



Sample Label



Section 2. Treatment Process Overview

Fuji Clean's "contact filtration" treatment is a simple, well engineered process that consists of a controlled, circuitous flow train through anaerobic and aerobic chambers and in direct contact with assorted proprietary fixed film medias on which biological digestion of organic matter occurs. Media is also designed and positioned to provide mechanical filtration of process wastewater.

The system includes two air lift pumps (see diagram below). The Recirculating Airlift Pump returns process water and sludge from the aerobic zone to the sedimentation chamber, recirculating 4-6 times inflow for CEN (enhanced denitrification) models. The Effluent Airlift Pump is designed to help equalize flow and discharge treated effluent.



Two Air Lift Pumps. One Recirculating Air Lift pump sending process water and solids back to Chamber 1, and one Effluent Air Lift Pump for measured discharge of treated effluent. (See airlift pump info below).

Chamber 3B. Disinfection Chamber (final zone before discharge – option for chlorination tablet disinfection)

Chamber 3A. Storage Chamber (settling zone)

Sludge Transfer
(Recirculating air lift pumpback) See airlift pump info below.

Outlet

Inlet

Powered by the FujiMACR11 Series Blowers State-of-the-art linear diaphragm air blowers manufactured by Fuji Clean Co sized to provide about 2.8 cubic feet per minute to most residential systems.

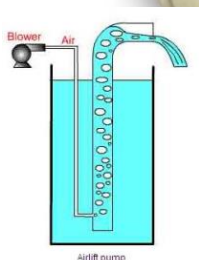
Chamber 3. Aerobic Contact Filtration Chamber
(both board and cylindrical hollow mesh media) oxygen rich zone for aerobic microbe digestion activity, solids filtration and nitrification of ammoniac nitrogens to nitrates.

Chamber 2. Anaerobic Contact Filtration Chamber (spherical-skeleton filter media) organic matter decomposition by micro-organisms, suspended solids captured and nitrates are denitrified.

Chamber 1. Sedimentation Chamber (separates solids and greases).

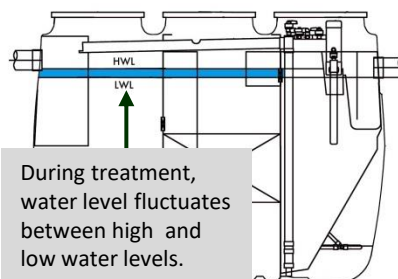
Overflow Effluent Weir

Flow Equalization
When water level exceeds LWL, treated water is discharged through Chamber 3B via the Effluent Air Lift pump. If water level exceeds HWL, then treated water is also discharged through an overflow effluent weir.

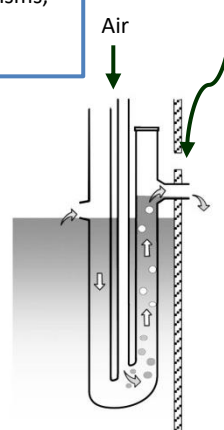


Airlift pump

Airlift Pumps. This generic illustration shows the mechanics of the "airlift pumps" used in this system, which are simple pipe conduits through which pressurized air (from blower) is introduced at the bottom and by fluid pressure, water is carried up the pipe by ascending bubbles.



During treatment, water level fluctuates between high and low water levels.



Section 3a. System Components and Specifications - Summary

| FUJI CLEAN USA RESIDENTIAL SYSTEM SPECIFICATION TABLE | | CEN Series BOD, TSS, Enhanced TN | | | |
|-------------------------------------------------------------|--|----------------------------------------|------------------------------|------------------------------|------------------------------|
| Model | | CEN5 | CEN7 | CEN10 | CEN14 |
| Load Hydraulic** (GPD) | | 500 | 700 | 1,000 | 1,350 |
| Effluent*** (assumes domestic strength influent) | | | | | |
| BOD (mg/L) | | 10 | 10 | 10 | 10 |
| TSS (mg/L) | | 10 | 10 | 10 | 10 |
| TN (mg/L) | | 10 | 10 | 10 | 10 |
| Blower Model / CFM (Standard) | | FujiMAC 80RII 2.8 CFM | FujiMAC 100RII 2.8 CFM | FujiMAC 150RII 5.3 CFM | FujiMAC 200RII 5.3 CFM |
| Power Use (kWh/day) | | 1.2 | 1.7 | 2.7 | 3.7 |
| Tank Detail: | | | | | |
| Material | | Fibre-reinforced plastic | | | |
| Height (inches) | | 65.7 | 73.6 | 77.4 | 81.3 |
| Length (inches) | | 95.7 | 98.8 | 118.9 | 152.8 |
| Width (inches) | | 49.2 | 56.7 | 68.9 | 72.4 |
| Weight (lbs.) | | 463 | 705 | 926 | 1168 |
| Inlet Invert (inches, to 1/8") | | 53 | 61 | 62 | 65 |
| Outlet Invert (inches to 1/8") | | 51 | 59 | 59.5 | 63 |
| Access Ports (number) | | 3 | 3 | 3 | 3 |
| Access Port Diameter (inches) | | 2@20" 1@24" | 2@20" 1@24" | 2@20" 1@24" | 2@20" 1@24" |
| Volume Total (gallons) | | 749 | 1069 | 1498 | 2252 |
| Volume Chamber 1, Sedimentation (gal) | | 277 | 397 | 558 | 837 |
| Vol Chamber 2, Anaerobic (gal) | | 278 | 396 | 556 | 839 |
| Vol Chamber 3, Aeration (gal) | | 127 | 181 | 248 | 378 |
| Vol Chamber 3a, Storage (gal) | | 63 | 90 | 124 | 186 |
| Volume Chamber 3b, Disinfection (gal) | | 4 | 6 | 12 | 12 |

** Please consult with distributor or Fuji Clean USA for commercial models designed to treat hydraulic flows above those listed in this table.

*** Please consult with distributor or Fuji Clean USA for system specification and sizing in cases where influent biologic strength is greater than domestic strength.

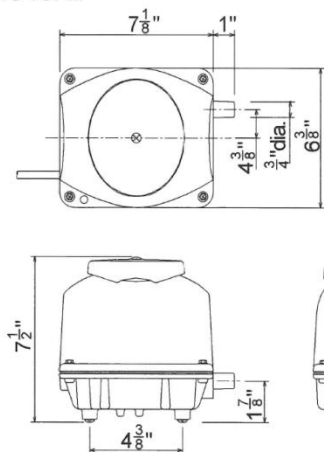
Note: Structural drawings of all residential models are available in both .dwg and pdf formats online at www.fujicleanusa.com

Section 3b. System Components – FujiMACRII Blowers

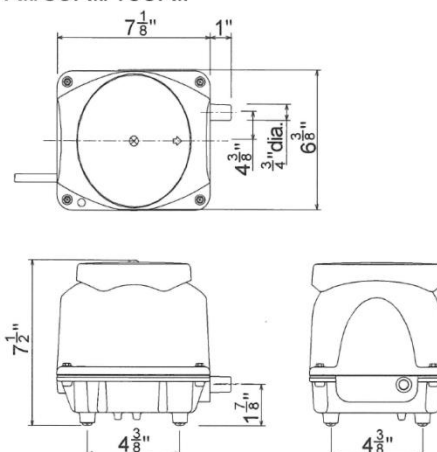
The Table below includes specifications for FujiMACRII series blowers. The table below includes blower models associated with each standard system installation. Some installations may require upsized blowers based on overall distance (i.e. air conduit length and diameter) and number of elbows from blower to treatment system. Please refer to Fuji Clean installation guidelines.

| Fuji Clean USA Treatment System Model | CEN5 | CEN7 CEN10 | CEN10 CEN21 (x2) |
|------------------------------------------|----------------------------------------------------|----------------------|--------------------------------------------------------|
| MACBlower Model | FujiMAC 80RII | FujiMAC 100RII | FujiMAC 150RII |
| Air Flow Volume | 80 L/min 2.8 cfm | 100 L/min 3.5 cfm | 150 L/min 5.3 cfm |
| Normal Pressure | 15 kPa 2.2 psi | 18 kPa 2.6 psi | 18 kPa / 2.6 psi |
| Rated Voltage | 120V | | |
| Frequency | 60Hz | | |
| Outlet Pipe Size | 13mm ID (18mm OD) 33/64 inch ID (45/64 inch OD) | | 20mm ID (26mm OD) 25/32 inch ID (1-1/32 inch OD) |
| Weight | 5.0kg 11 lbs. | | 9.0kg 19 lbs. 13 oz. |
| Power Consumption kWh/day | 1.2 | 1.7 | 2.7 |
| Amperes | 1.0A | 1.7A | 2.3A |
| Power Cable | 3 × 18AWG × 1.8m (5ft.11in.) | | |
| Manufacturer | Made in Japan by Fuji Clean | | |

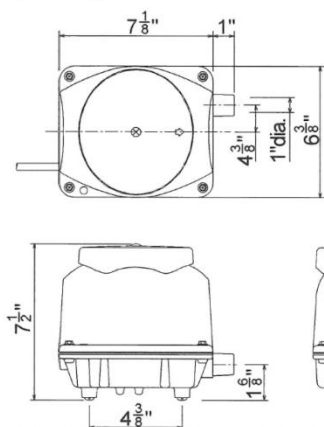
□MAC40RII



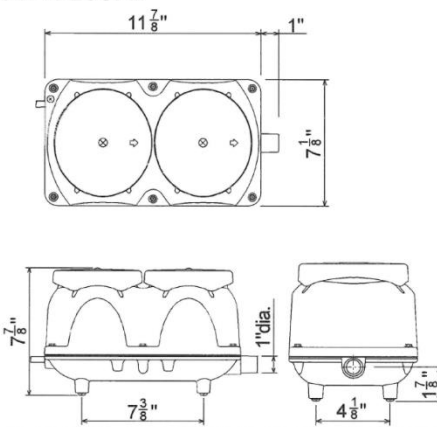
□MAC60RII/80RII/100RII



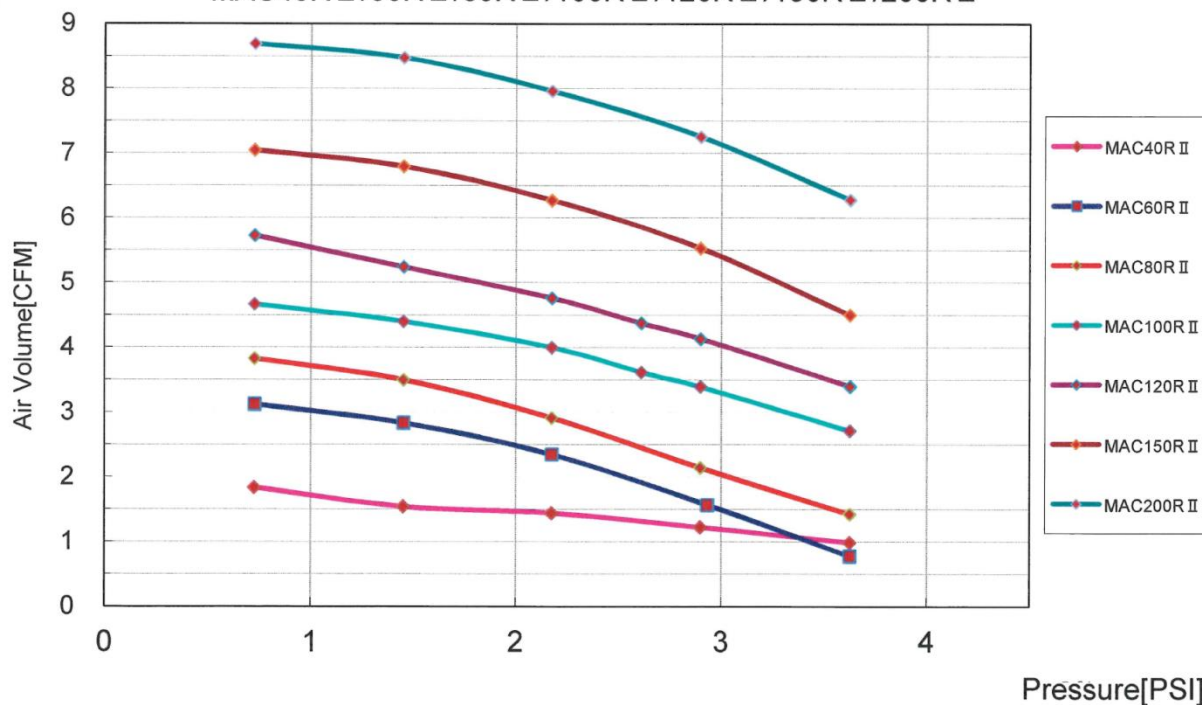
□MAC120RII



□MAC150RII/200RII



FujiMAC Series Performance Curve -120V60Hz
MAC40R II /60R II /80R II /100R II /120R II /150R II /200R II



Section 3c. System Components - Alarm / Control Panel

NEMA 4X rated, the Alarm/Control Panel monitors tank water level and blower operation. An audible horn and red beacon light will activate in the event of either a tank high water condition or if the blower ceases to operate (causing a drop in air pressure). Please note: upgraded controllers with telecommunication, alarm tracking and data logging capabilities are available.

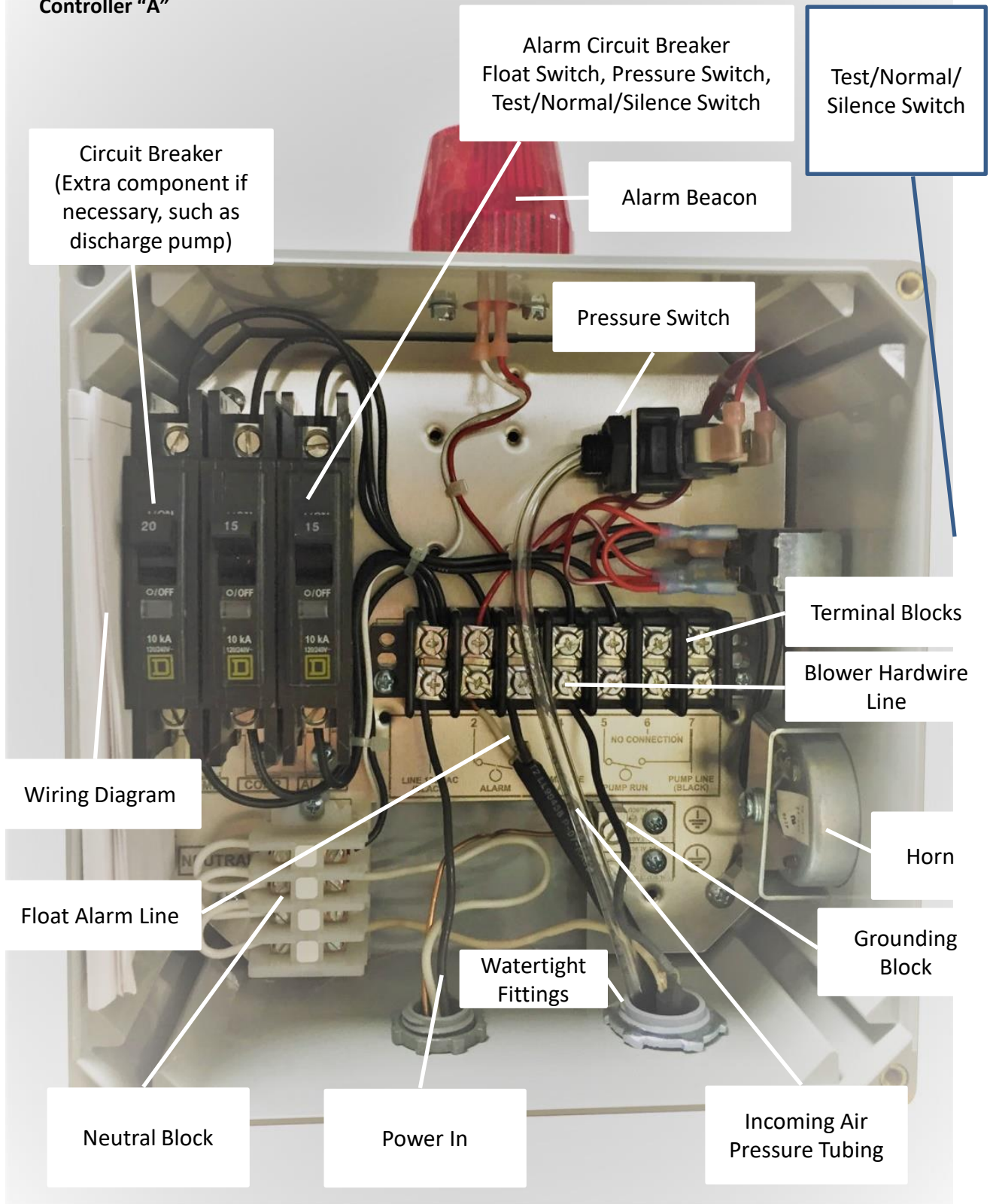
A 3-way toggle switch (Test-Normal-Silence) allows check for proper operation by toggling the side panel switch to “Test” mode. When the switch is released, it will return to normal operation. In the event of an alarm condition the “Silence” switch may be engaged to silence the audible alarm. The beacon will continue to flash until normal operation is restored and the alarm will reset. If a new alarm condition occurs, the “Silence” mode will expire and the unit’s horn will begin sounding again.

All conduits between panel and treatment tank must be sealed to prevent gas leakage into panel.

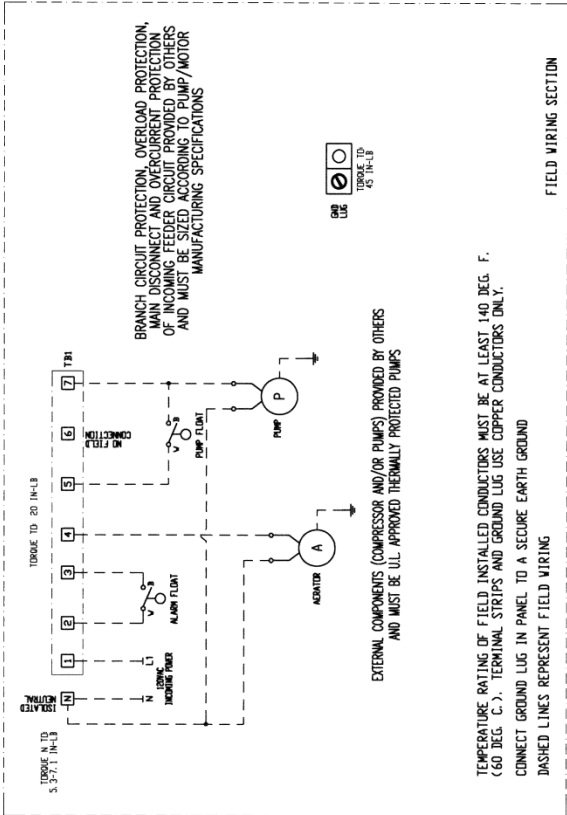
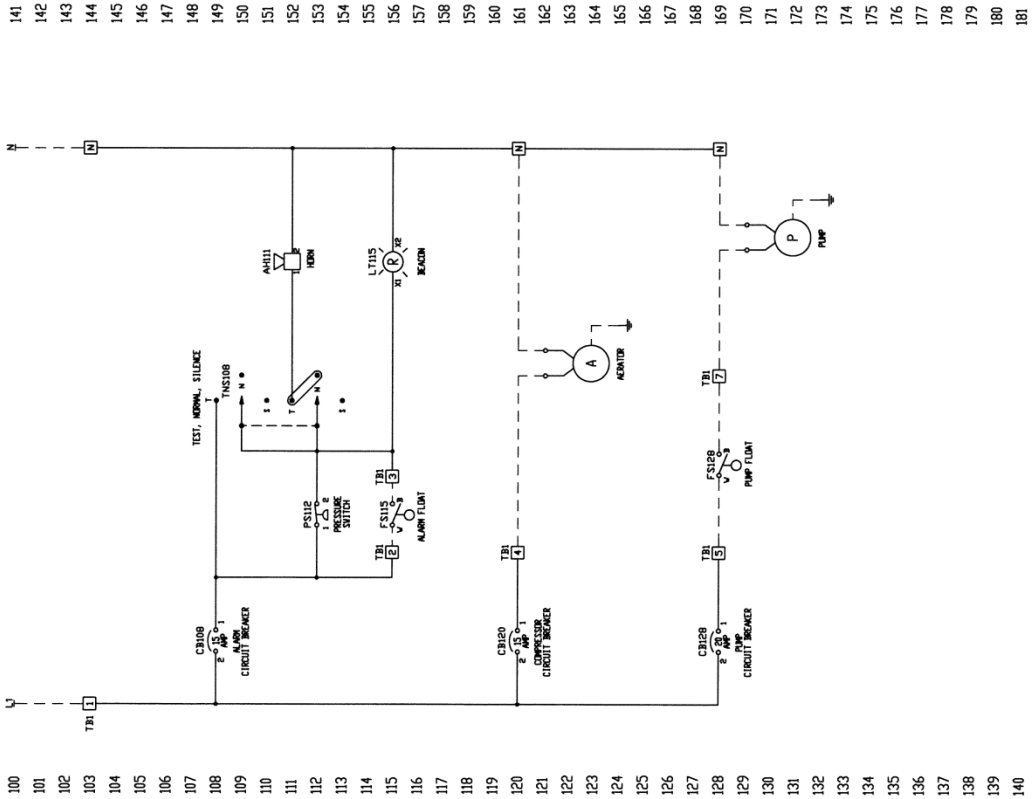
Fuji Clean USA offers a choice of customized alarm/control panels, each with different features. Control panel customization is also available to match unique site or job requirements. Please consult Fuji Clean USA for details. Wiring diagrams for Controllers “A” and “C” are included in this Manual. Wiring diagrams for other controllers are often site specific and will accompany the controller.

| Model Features | Controller A | Controller C | Controller D | Controller E |
|-----------------------------------------------------------|--------------|--------------|-----------------------|-----------------------|
| SJE Rhombus Model # | 1041972 | 1045040 | IFS41W914X6A8AC10E27D | IFI41W914X6A8AC10E27D |
| NEMA 4X Weather Proof Enclosure | X | X | X | X |
| Three 120 Volt AC Breakers (Pump, Compressor, Alarm) | X | X | X | X |
| Alarm/Test/Normal/Silence Switch | X | X | X | X |
| Compressor Low Pressure Alarm Switch | X | X | X | X |
| Communication Contacts (Alarm Aux) | | X | X | X |
| Elapsed Time Meter | | X | X | X |
| Duplex Pump Demand or Timed Dosing Control | | | X | X |
| Data Logging Panel via USB Port to Flash Drive | | | | X |
| UL Listed to Meet and/or Exceed Industry Safety Standards | | | X | X |
| Dual Safety Certification for U.S and Canada | | | X | X |

**Fuji Clean USA
Controller "A"**

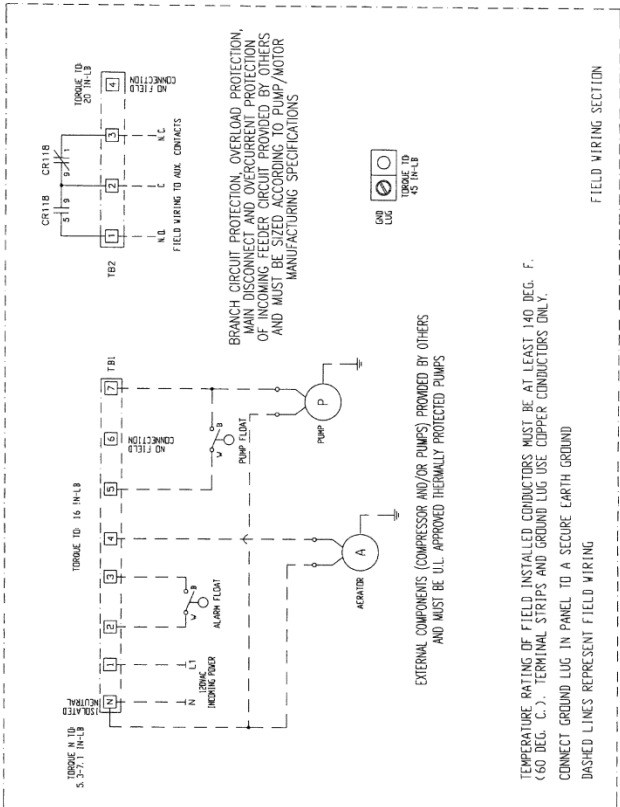
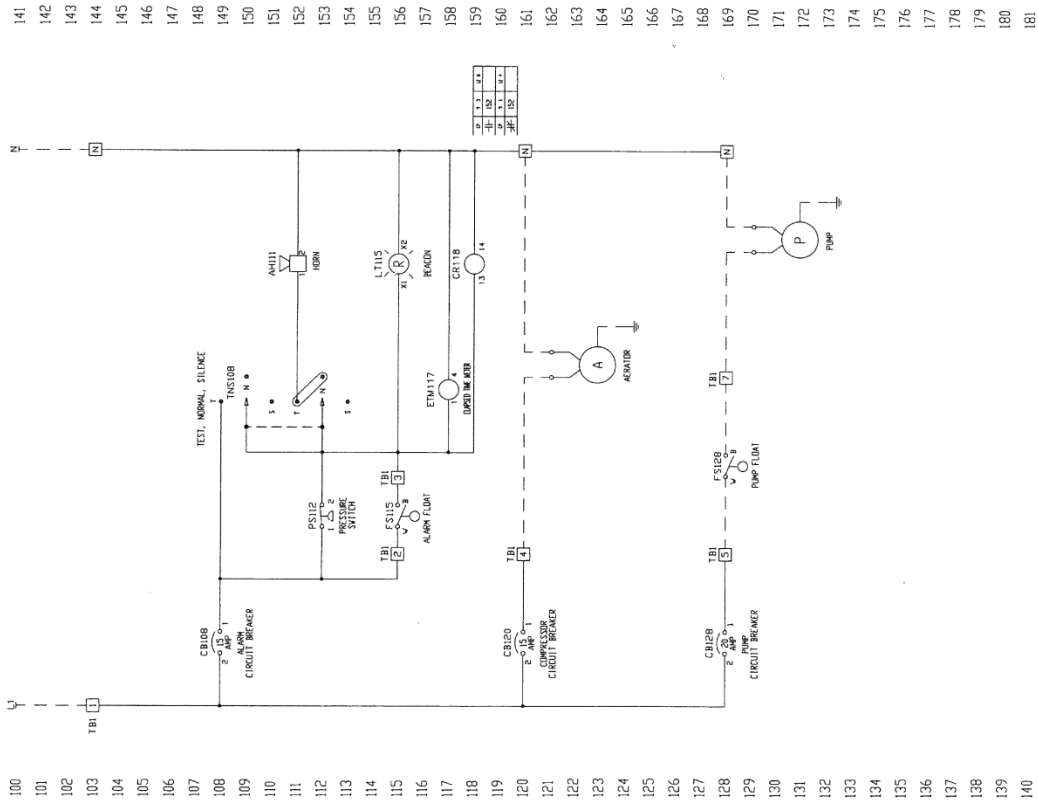


Controller "A" Wiring Diagram



| SJT-Rhombus | | | | | | | | | |
|-----------------------------------------------------------------------------------------------------------------------------------------------------------------------|-------|-------|---------|-------|---------|-------|---------|-------|---------|
| NOTES: THIS DRAWING CONTAINS PROPRIETARY INFORMATION AND IT SHALL NOT BE USED OR REPRODUCED IN ITS ENTIRETY OR IN PART WITHOUT THE WRITTEN PERMISSION OF SJT-Rhombus. | | | | | | | | | |
| REV | DATE | BY | CHKD BY | DATE | CHKD BY | DATE | CHKD BY | DATE | CHKD BY |
| 1 | 06/24 | 02/17 | 02/17 | 02/17 | 02/17 | 02/17 | 02/17 | 02/17 | 02/17 |
| 2 | 06/24 | 02/17 | 02/17 | 02/17 | 02/17 | 02/17 | 02/17 | 02/17 | 02/17 |
| 3 | 06/24 | 02/17 | 02/17 | 02/17 | 02/17 | 02/17 | 02/17 | 02/17 | 02/17 |
| 4 | 06/24 | 02/17 | 02/17 | 02/17 | 02/17 | 02/17 | 02/17 | 02/17 | 02/17 |
| 5 | 06/24 | 02/17 | 02/17 | 02/17 | 02/17 | 02/17 | 02/17 | 02/17 | 02/17 |
| 6 | 06/24 | 02/17 | 02/17 | 02/17 | 02/17 | 02/17 | 02/17 | 02/17 | 02/17 |
| 7 | 06/24 | 02/17 | 02/17 | 02/17 | 02/17 | 02/17 | 02/17 | 02/17 | 02/17 |
| 8 | 06/24 | 02/17 | 02/17 | 02/17 | 02/17 | 02/17 | 02/17 | 02/17 | 02/17 |
| 9 | 06/24 | 02/17 | 02/17 | 02/17 | 02/17 | 02/17 | 02/17 | 02/17 | 02/17 |
| 10 | 06/24 | 02/17 | 02/17 | 02/17 | 02/17 | 02/17 | 02/17 | 02/17 | 02/17 |
| 11 | 06/24 | 02/17 | 02/17 | 02/17 | 02/17 | 02/17 | 02/17 | 02/17 | 02/17 |
| 12 | 06/24 | 02/17 | 02/17 | 02/17 | 02/17 | 02/17 | 02/17 | 02/17 | 02/17 |
| 13 | 06/24 | 02/17 | 02/17 | 02/17 | 02/17 | 02/17 | 02/17 | 02/17 | 02/17 |
| 14 | 06/24 | 02/17 | 02/17 | 02/17 | 02/17 | 02/17 | 02/17 | 02/17 | 02/17 |
| 15 | 06/24 | 02/17 | 02/17 | 02/17 | 02/17 | 02/17 | 02/17 | 02/17 | 02/17 |
| 16 | 06/24 | 02/17 | 02/17 | 02/17 | 02/17 | 02/17 | 02/17 | 02/17 | 02/17 |
| 17 | 06/24 | 02/17 | 02/17 | 02/17 | 02/17 | 02/17 | 02/17 | 02/17 | 02/17 |
| 18 | 06/24 | 02/17 | 02/17 | 02/17 | 02/17 | 02/17 | 02/17 | 02/17 | 02/17 |
| 19 | 06/24 | 02/17 | 02/17 | 02/17 | 02/17 | 02/17 | 02/17 | 02/17 | 02/17 |
| 20 | 06/24 | 02/17 | 02/17 | 02/17 | 02/17 | 02/17 | 02/17 | 02/17 | 02/17 |
| 21 | 06/24 | 02/17 | 02/17 | 02/17 | 02/17 | 02/17 | 02/17 | 02/17 | 02/17 |
| 22 | 06/24 | 02/17 | 02/17 | 02/17 | 02/17 | 02/17 | 02/17 | 02/17 | 02/17 |
| 23 | 06/24 | 02/17 | 02/17 | 02/17 | 02/17 | 02/17 | 02/17 | 02/17 | 02/17 |
| 24 | 06/24 | 02/17 | 02/17 | 02/17 | 02/17 | 02/17 | 02/17 | 02/17 | 02/17 |
| 25 | 06/24 | 02/17 | 02/17 | 02/17 | 02/17 | 02/17 | 02/17 | 02/17 | 02/17 |
| 26 | 06/24 | 02/17 | 02/17 | 02/17 | 02/17 | 02/17 | 02/17 | 02/17 | 02/17 |
| 27 | 06/24 | 02/17 | 02/17 | 02/17 | 02/17 | 02/17 | 02/17 | 02/17 | 02/17 |
| 28 | 06/24 | 02/17 | 02/17 | 02/17 | 02/17 | 02/17 | 02/17 | 02/17 | 02/17 |
| 29 | 06/24 | 02/17 | 02/17 | 02/17 | 02/17 | 02/17 | 02/17 | 02/17 | 02/17 |
| 30 | 06/24 | 02/17 | 02/17 | 02/17 | 02/17 | 02/17 | 02/17 | 02/17 | 02/17 |
| 31 | 06/24 | 02/17 | 02/17 | 02/17 | 02/17 | 02/17 | 02/17 | 02/17 | 02/17 |
| 32 | 06/24 | 02/17 | 02/17 | 02/17 | 02/17 | 02/17 | 02/17 | 02/17 | 02/17 |
| 33 | 06/24 | 02/17 | 02/17 | 02/17 | 02/17 | 02/17 | 02/17 | 02/17 | 02/17 |
| 34 | 06/24 | 02/17 | 02/17 | 02/17 | 02/17 | 02/17 | 02/17 | 02/17 | 02/17 |
| 35 | 06/24 | 02/17 | 02/17 | 02/17 | 02/17 | 02/17 | 02/17 | 02/17 | 02/17 |
| 36 | 06/24 | 02/17 | 02/17 | 02/17 | 02/17 | 02/17 | 02/17 | 02/17 | 02/17 |
| 37 | 06/24 | 02/17 | 02/17 | 02/17 | 02/17 | 02/17 | 02/17 | 02/17 | 02/17 |
| 38 | 06/24 | 02/17 | 02/17 | 02/17 | 02/17 | 02/17 | 02/17 | 02/17 | 02/17 |
| 39 | 06/24 | 02/17 | 02/17 | 02/17 | 02/17 | 02/17 | 02/17 | 02/17 | 02/17 |
| 40 | 06/24 | 02/17 | 02/17 | 02/17 | 02/17 | 02/17 | 02/17 | 02/17 | 02/17 |
| 41 | 06/24 | 02/17 | 02/17 | 02/17 | 02/17 | 02/17 | 02/17 | 02/17 | 02/17 |
| 42 | 06/24 | 02/17 | 02/17 | 02/17 | 02/17 | 02/17 | 02/17 | 02/17 | 02/17 |
| 43 | 06/24 | 02/17 | 02/17 | 02/17 | 02/17 | 02/17 | 02/17 | 02/17 | 02/17 |
| 44 | 06/24 | 02/17 | 02/17 | 02/17 | 02/17 | 02/17 | 02/17 | 02/17 | 02/17 |
| 45 | 06/24 | 02/17 | 02/17 | 02/17 | 02/17 | 02/17 | 02/17 | 02/17 | 02/17 |
| 46 | 06/24 | 02/17 | 02/17 | 02/17 | 02/17 | 02/17 | 02/17 | 02/17 | 02/17 |
| 47 | 06/24 | 02/17 | 02/17 | 02/17 | 02/17 | 02/17 | 02/17 | 02/17 | 02/17 |
| 48 | 06/24 | 02/17 | 02/17 | 02/17 | 02/17 | 02/17 | 02/17 | 02/17 | 02/17 |
| 49 | 06/24 | 02/17 | 02/17 | 02/17 | 02/17 | 02/17 | 02/17 | 02/17 | 02/17 |
| 50 | 06/24 | 02/17 | 02/17 | 02/17 | 02/17 | 02/17 | 02/17 | 02/17 | 02/17 |
| 51 | 06/24 | 02/17 | 02/17 | 02/17 | 02/17 | 02/17 | 02/17 | 02/17 | 02/17 |
| 52 | 06/24 | 02/17 | 02/17 | 02/17 | 02/17 | 02/17 | 02/17 | 02/17 | 02/17 |
| 53 | 06/24 | 02/17 | 02/17 | 02/17 | 02/17 | 02/17 | 02/17 | 02/17 | 02/17 |
| 54 | 06/24 | 02/17 | 02/17 | 02/17 | 02/17 | 02/17 | 02/17 | 02/17 | 02/17 |
| 55 | 06/24 | 02/17 | 02/17 | 02/17 | 02/17 | 02/17 | 02/17 | 02/17 | 02/17 |
| 56 | 06/24 | 02/17 | 02/17 | 02/17 | 02/17 | 02/17 | 02/17 | 02/17 | 02/17 |
| 57 | 06/24 | 02/17 | 02/17 | 02/17 | 02/17 | 02/17 | 02/17 | 02/17 | 02/17 |
| 58 | 06/24 | 02/17 | 02/17 | 02/17 | 02/17 | 02/17 | 02/17 | 02/17 | 02/17 |
| 59 | 06/24 | 02/17 | 02/17 | 02/17 | 02/17 | 02/17 | 02/17 | 02/17 | 02/17 |
| 60 | 06/24 | 02/17 | 02/17 | 02/17 | 02/17 | 02/17 | 02/17 | 02/17 | 02/17 |
| 61 | 06/24 | 02/17 | 02/17 | 02/17 | 02/17 | 02/17 | 02/17 | 02/17 | 02/17 |
| 62 | 06/24 | 02/17 | 02/17 | 02/17 | 02/17 | 02/17 | 02/17 | 02/17 | 02/17 |
| 63 | 06/24 | 02/17 | 02/17 | 02/17 | 02/17 | 02/17 | 02/17 | 02/17 | 02/17 |
| 64 | 06/24 | 02/17 | 02/17 | 02/17 | 02/17 | 02/17 | 02/17 | 02/17 | 02/17 |
| 65 | 06/24 | 02/17 | 02/17 | 02/17 | 02/17 | 02/17 | 02/17 | 02/17 | 02/17 |
| 66 | 06/24 | 02/17 | 02/17 | 02/17 | 02/17 | 02/17 | 02/17 | 02/17 | 02/17 |
| 67 | 06/24 | 02/17 | 02/17 | 02/17 | 02/17 | 02/17 | 02/17 | 02/17 | 02/17 |
| 68 | 06/24 | 02/17 | 02/17 | 02/17 | 02/17 | 02/17 | 02/17 | 02/17 | 02/17 |
| 69 | 06/24 | 02/17 | 02/17 | 02/17 | 02/17 | 02/17 | 02/17 | 02/17 | 02/17 |
| 70 | 06/24 | 02/17 | 02/17 | 02/17 | 02/17 | 02/17 | 02/17 | 02/17 | 02/17 |
| 71 | 06/24 | 02/17 | 02/17 | 02/17 | 02/17 | 02/17 | 02/17 | 02/17 | 02/17 |
| 72 | 06/24 | 02/17 | 02/17 | 02/17 | 02/17 | 02/17 | 02/17 | 02/17 | 02/17 |
| 73 | 06/24 | 02/17 | 02/17 | 02/17 | 02/17 | 02/17 | 02/17 | 02/17 | 02/17 |
| 74 | 06/24 | 02/17 | 02/17 | 02/17 | 02/17 | 02/17 | 02/17 | 02/17 | 02/17 |
| 75 | 06/24 | 02/17 | 02/17 | 02/17 | 02/17 | 02/17 | 02/17 | 02/17 | 02/17 |
| 76 | 06/24 | 02/17 | 02/17 | 02/17 | 02/17 | 02/17 | 02/17 | 02/17 | 02/17 |
| 77 | 06/24 | 02/17 | 02/17 | 02/17 | 02/17 | 02/17 | 02/17 | 02/17 | 02/17 |
| 78 | 06/24 | 02/17 | 02/17 | 02/17 | 02/17 | 02/17 | 02/17 | 02/17 | 02/17 |
| 79 | 06/24 | 02/17 | 02/17 | 02/17 | 02/17 | 02/17 | 02/17 | 02/17 | 02/17 |
| 80 | 06/24 | 02/17 | 02/17 | 02/17 | 02/17 | 02/17 | 02/17 | 02/17 | 02/17 |
| 81 | 06/24 | 02/17 | 02/17 | 02/17 | 02/17 | 02/17 | 02/17 | 02/17 | 02/17 |

Controller "C" Wiring Diagram



| | | | | | | | | | |
|-------------------------------------------------------------------------------------------------------------------------------------------------------------------------------------------------------------------------------|---------|----|---------|----------|---------|-----|---------|----|---------|
| NOTES: FIELD WIRING CONTAINS PROTECTIVE DEVICES AND IT SHALL BE THE RESPONSIBILITY OF THE USER TO ENSURE THAT ALL WIRING IS DONE IN ACCORDANCE WITH THE MANUFACTURING SPECIFICATIONS AND THE UL LISTING FOR THE DEVICES USED. | | | | | | | | | |
| REV | DATE | BY | CHKD BY | APP'D BY | DATE | REV | DATE | BY | CHKD BY |
| 1 | 10/1/15 | JL | 8/11/15 | 8/11/15 | 10/1/15 | 1 | 10/1/15 | JL | 8/11/15 |
| 2 | 10/1/15 | JL | 8/11/15 | 8/11/15 | 10/1/15 | 2 | 10/1/15 | JL | 8/11/15 |
| 3 | 10/1/15 | JL | 8/11/15 | 8/11/15 | 10/1/15 | 3 | 10/1/15 | JL | 8/11/15 |
| 4 | 10/1/15 | JL | 8/11/15 | 8/11/15 | 10/1/15 | 4 | 10/1/15 | JL | 8/11/15 |
| 5 | 10/1/15 | JL | 8/11/15 | 8/11/15 | 10/1/15 | 5 | 10/1/15 | JL | 8/11/15 |
| 6 | 10/1/15 | JL | 8/11/15 | 8/11/15 | 10/1/15 | 6 | 10/1/15 | JL | 8/11/15 |
| 7 | 10/1/15 | JL | 8/11/15 | 8/11/15 | 10/1/15 | 7 | 10/1/15 | JL | 8/11/15 |
| 8 | 10/1/15 | JL | 8/11/15 | 8/11/15 | 10/1/15 | 8 | 10/1/15 | JL | 8/11/15 |
| 9 | 10/1/15 | JL | 8/11/15 | 8/11/15 | 10/1/15 | 9 | 10/1/15 | JL | 8/11/15 |
| 10 | 10/1/15 | JL | 8/11/15 | 8/11/15 | 10/1/15 | 10 | 10/1/15 | JL | 8/11/15 |

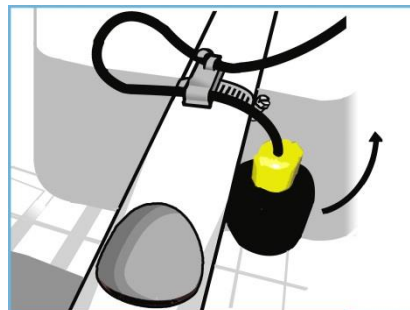
Section 3d. System Components - Float Switch

The SJE Rhombus Signalmaster float switch may be pre-mounted in Fuji Clean USA treatment systems. In the event that the float switch needs to be installed or replaced, this information from SJE Rhombus is supplied for informed, proper handling during the installation process.

SJE SIGNALMASTER®



- Mechanically activated.
- Control differential of 1.5 inches above or below horizontal.
- Not sensitive to rotation.
- Mounting options: mounting clamp or cable weight.



Mounting the Switch

Install on the pumpback line using the provided hose clamp and mounting fixture in the center of Chamber 2, (Anaerobic Contact Filtration Chamber) with 3-1/2" (9 cm) of electrical cord tether.



ELECTRICAL SHOCK HAZARD

Disconnect power before installing or servicing this product. A qualified service person must install and service this product according to applicable electrical and plumbing codes.



EXPLOSION OR FIRE HAZARD

Do not use this product with flammable liquids. Do not install in hazardous locations as defined by National Electric Code, ANSI/NFPA 70.

Failure to follow these precautions could result in serious injury or death. Replace product immediately if switch becomes damaged or severed. Keep these instructions with warranty after installation. This product must be installed in accordance with National Electric Code, ANSI/NFPA 70 so as to prevent moisture from entering or accumulating with in boxes, conduit bodies, fittings, float housing, or cable.

PREVENTATIVE MAINTENANCE

- Periodically check the product. Check that the cable has not become worn or that the housing has not been damaged so as to impair the protection of the product. Replace the product immediately if any damage is found or suspected.
- Periodically check to see that the float is free to move and operate the switch.
- Use only SJE Rhombus replacement parts.
- The Sensor Float and Sensor Float Mini control switches contain mercury and MUST be recycle or disposed of according to local, state and federal codes.

SJE-RHOMBUS® THREE-YEAR LIMITED WARRANTY

SJE-RHOMBUS® warrants to the original consumer that this product shall be free of manufacturing defects for three years after the date of consumer purchase. During that time period and subject to the conditions set forth below, SJE-RHOMBUS® will repair or replace, for the original consumer, any component which proves to be defective due to defective materials or workmanship of SJE-RHOMBUS®.

THIS EXPRESS WARRANTY DOES NOT APPLY TO THE MOTOR START KIT COMPONENT. SJE-RHOMBUS® MAKES NO WARRANTIES OF ANY TYPE WITH RESPECT TO THE MOTOR START KIT.

ELECTRICAL WIRING AND SERVICING OF THIS PRODUCT MUST BE PERFORMED BY A LICENSED ELECTRICIAN.

THIS WARRANTY DOES NOT APPLY: (A) to damage due to lightning or conditions beyond the control of SJE-RHOMBUS®; (B) to defects or malfunctions resulting from failure to properly install, operate or maintain the unit in accordance with printed instructions provided; (C) to failures resulting from abuse, misuse, accident, or negligence; (D) to units which are not installed in accordance with applicable local codes, ordinances, or accepted trade practices, and (E) to units repaired and/or modified without prior authorization from SJE-RHOMBUS®.

Some states do not allow limitations on how long an implied warranty lasts, so the above limitation may not apply to you. Some states do not allow the exclusion or limitation of incidental or consequential damages, so the above limitation or exclusion may not apply to you. This warranty gives you specific legal rights, and you may also have other rights which vary from state to state.

TO OBTAIN WARRANTY SERVICE: The consumer shall assume all responsibility and expense for removal, reinstallation, and freight. Any item to be repaired or replaced under this warranty must be returned to SJE-RHOMBUS®, or such place as designated by SJE-RHOMBUS®.

ANY IMPLIED WARRANTIES OF MERCHANTABILITY OR FITNESS ARE LIMITED TO THE DURATION OF THIS WRITTEN WARRANTY. SJE-RHOMBUS® SHALL NOT, IN ANY MANNER, BE LIABLE FOR ANY INCIDENTAL OR CONSEQUENTIAL DAMAGES AS A RESULT OF A BREACH OF THIS WRITTEN WARRANTY OR ANY IMPLIED WARRANTY.

Section 3e. System Components – Wi-Fi Communications Device

The SJE Rhombus MySpy Wi-Fi Messenger requires controller communication contacts. Fuji Clean USA Controller "C" is the most basic controller model that provides these contacts. This device must be mounted within range of home Wi-Fi signal.

MySpy® WiFi Messenger Alarm System

Easy-to-install indoor alarm system with WiFi connectivity, remote notification, battery backup, and auto reset.

The MySpy® WiFi Messenger system monitors and reports any residential alarm condition (contact closure), including sump high water level (float switch), or under/over temperature alarms. When the contact closes, the alarm notifies the user locally (audible and visual alarm) and remotely via SMS text messages and/or emails over a WiFi or Ethernet network to a smartphone, tablet or computer. The horn can be silenced when the alarm is active, but the alarm light remains on until the condition is cleared. Once the condition is cleared, the alarm will automatically reset.

No cellular connection needed (no monthly fees), but it is necessary for the home owner to have a reliable WiFi network and connection to the internet for this alarm to send remote notifications. Text message notifications can be sent to a cell phone with an active SMS service.



FEATURES

- NEMA 1 enclosure rated for indoor use.
- Automatic alarm reset.
- Red "alarm" light, green "power on" light, blue "network status" light, alarm "test" switch, horn "silence" switch, and WiFi Protected Setup (WPS) connection button.
- WiFi connectivity for remote alarm reporting
 - WiFi Protected Setup (WPS) push-button connect feature for simplified connection.
 - Manual WiFi setup done through Ethernet connection.
- Ethernet connectivity for remote alarm reporting - for cabled connection to router or modem (cable not included).
- Notifies the user via text and/or email notifications of the following conditions: Alarm, Power Lost, Power Restored, Low Battery, and Alarm Offline.

NOTE: Installation of an Uninterruptible Power Supply (UPS) on internet modem and wireless router is recommended. The internet connection must be maintained to receive notifications.

- Notifies up to 4 contacts (2 text and 2 email contacts).
- Alarm horn sounds at 87 decibels at 10 feet (3 meters).
- Can be used with any switching mechanism rated to include 1 amp, 9 VDC load.
- If primary power fails, the alarm system continues to work locally due to battery backup feature. (battery not included.)

NOTE: A Power Lost notification will be sent when entering battery backup mode, but other email and text notifications will not be sent in this mode.

- Complete package includes standard SJE SignalMaster® control switch with 15 feet (4.57 meters) of cable and mounting clamp.
- Switching mechanism operates on low voltage and is isolated from the power line to reduce the possibility of shock.
- Auxiliary alarm contacts for easy attachment of remote devices
- Low battery chirp.
- Easy access battery compartment.
- External terminal block for easy float switch installation.
- CSA Certified.
- Five-year limited warranty.



OPTIONS

When ordered with the alarm, this system is available with:

- Alternate float switch models for high or low level warning.
- Splice kit.

**SEE BACKSIDE FOR ORDERING INFORMATION.
SEE PRICE BOOK FOR LIST PRICE.**

SPECIFICATIONS

VOLTAGE FOR 120 VAC MODEL:

Primary: 120 VAC, 60 Hz, 2.4 watts max.
(alarm condition)
Secondary: 9 VDC

BATTERY BACKUP POWER: 9 VDC

ALARM ENCLOSURE: 6 x 4 x 2.25 inch
(15.24 x 10.16 x 5.71 cm), NEMA 1 plastic.

ALARM HORN: 87 decibels at 10 feet
(3 meters)

AUXILIARY ALARM CONTACTS

Voltage: 120 VAC
Current: 0.5 amps maximum N/O
0.5 amps maximum N/C

POWER CORD: 6 foot (1.8 meter)

FLOAT SWITCH CONNECTION TERMINAL:

For float switch connection only. Do not apply power. (Voltage across terminals is 8-9 VDC).

FLOAT SWITCH: SJE SignalMaster® control switch with mounting clamp

Cable: 15 feet (4.57 meters), flexible 18 gauge, 2 conductor (UL) SJOW, water-resistant (CPE)
Float: 2.74 inch diameter x 4.83 inch long (7.0 cm x 12.3 cm), high impact, corrosion resistant polypropylene housing for use in sewage and water up to 140°F (60°C)

WiFi: Connect using push-button WiFi Protected Setup (WPS) or manually by using Ethernet connection (ethernet cable not provided). WPA2 security required on wireless router.

ETHERNET: Requires an ethernet connection (ethernet cable not provided).

NOTE: Cellular WiFi hotspots are not recommended for use with this WiFi alarm, as intermittent or unreliable notification service can result.



SJE RHOMBUS

PO Box 1708, Detroit Lakes, MN 56502
1-888-DIAL-SJE • 1-218-847-1317
1-218-847-4617 Fax

email: customer.service@sjerhombus.com

www.sjerhombus.com

D.1

MySpy® WiFi Messenger Alarm System

Easy-to-install liquid level alarm system with WiFi connectivity, remote notification, auto-reset, and battery backup features for indoor use.

ORDERING INFORMATION

| 120 VAC | | |
|---------|-------------------------------------------------------|-----------------|
| Part # | Description | Shipping Weight |
| 1043586 | MSWF-01H (120 VAC w/15' SJE SignalMaster® High Level) | 2.73 lbs. |
| 1043655 | MSWF-01L (120 VAC w/15' SJE SignalMaster® Low Level) | 2.73 lbs. |
| 1043656 | MSWF-01H (120 VAC w/15' Sensor Float® High Level) | 2.81 lbs. |
| 1043657 | MSWF-01X (120 VAC no float) | 1.44 lbs. |

H = High Level L = Low Level X = No Float

MASTER CARTON holds 16 boxed units.
SEE PRICE BOOK FOR LIST PRICE.

OPTIONS

CONTROL SWITCH OPTIONS

The MySpy® WiFi Messenger alarm system comes standard with a 15ft **SJE SignalMaster®** control switch with mounting clamp. Other float switches are available. See control switch section of the catalog.

To determine the price of alarm with an alternate float, add the price of the part number with "no float" to the price of the float switch.

SPECIFICATIONS



VOLTAGE FOR 120 VAC MODEL:

Primary: 120 VAC, 50/60 Hz, 2.4 watts max. (alarm condition)

Secondary: 9 VDC

BATTERY BACKUP POWER: 9 VDC

ALARM ENCLOSURE: 6 x 4 x 2.25 inches (15.24 x 10.16 x 5.71 cm),
NEMA 1 plastic

ALARM HORN: 87 decibels at 10 feet (3 meters)

AUXILIARY ALARM CONTACTS: 120 VAC, 0.5 amps max N/O,
0.5 amp max N/C

POWER CORD: 6 foot (1.8 meter)

FLOAT SWITCH CONNECTION TERMINAL: for float switch connection only
(voltage across terminals is 8-9 VDC)

FLOAT SWITCH: **SJE SignalMaster®** control switch with mounting clamp

CABLE: 15 feet (4.57 meters), flexible 18 gauge, 2 conductor (UL)
SJOW, water resistant (CPE)

FLOAT: 2.74 inch diameter x 4.83 inch long (7.0 cm x 12.3 cm), high
impact, corrosion resistant polypropylene housing for use in sewage
and water up to 140°F (60°C)

WIFI: Connect using push-button WIFI Protected Setup (WPS) or manually
by using Ethernet connection (ethernet cable not provided).

ETHERNET: Requires an ethernet connection (ethernet cable not provided).
WPA2 security required on wireless router.

NOTE: Cellular WiFi hotspots are not recommended for use with this WiFi
alarm, as intermittent or unreliable notification service can result.

Call or fax your order!

1-888-DIAL-SJE (1-888-342-5753) ■ Fax 218-847-4617



SJE RHOMBUS

www.sjerrhombus.com
customer.service@sjerrhombus.com

Section 4. Maintenance Program

Scheduled Maintenance – General

If sampling is required, please draw samples prior to maintenance protocol. Please contact Fuji Clean USA for separate sampling procedure document.

Regularly scheduled maintenance by a qualified service professional is necessary for efficient operation of this system. The recommended frequency of scheduled maintenance is semi-annually and will typically take a service professional about 20 minutes to complete per visit. Proper maintenance also requires sludge be pumped out from the system on a periodic basis. The frequency of pump-out depends on the system's loading but is recommended approximately once every two years, and more frequently for systems that treat heavy flows and loads.

Consumable parts for the blower such as the blower diaphragms and air filter should be replaced regularly. The recommended replacement interval for these parts is 12 months, although site conditions (such as air quality) may warrant a longer or shorter interval.

Regular Maintenance Procedures

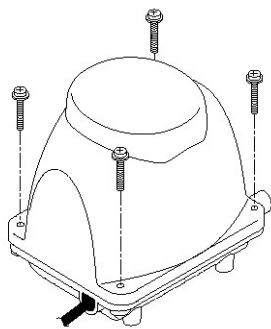
- 1. Outside Environment Check. (Recommended frequency: start-up and 1x every 6 months)**
 - ✓ The system is accessible and nothing inhibits access to maintenance.
 - ✓ Surface water is draining away from risers and covers.
 - ✓ No signs of physical damage to the treatment system, piping, alarms or components.
 - ✓ No unusual smells around the system.
 - ✓ No unusually loud blower noise, such as rattling.
- 2. Blower Box Check. (Recommended frequency: Start-up and 1x every 6 months)**
 - ✓ Open the blower box, make sure that it is operating properly.
 - ✓ Inspect all fittings and vents to ensure they are clean and dry.
- 3. Blower Operation and Blower Alarm Check. (Recommended frequency: Start-up and 1x every 6 months)**
 - ✓ Make sure the blower operates properly.
 - ✓ Clean the air filter or replace it, if necessary.
 - ✓ Turn off the blower for few moments to check that the alarm is triggered.
- 4. Blower Consumable Components (Recommended frequency: air filter inspection 1x every 6 months. Diaphragm replacement as required.)**
 - ✓ The blower contains an air filter and diaphragms, which are considered “consumables.” The air filter should be inspected and cleaned/replaced regularly. Diaphragms and their casings should be replaced regularly to maximize blower life and efficiency. The recommended frequency for each of these procedures is once annually. Please follow steps on the following page.

Blower Air Filter Cleaning / Replacement Procedure

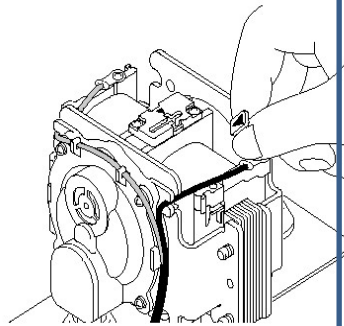
Replacing the blower air filter is very simple and consists of removing the filter cover with a Phillips screwdriver, removing the old, cleaning it (blow clean with air pressure) or replacing it with a new filter, and then screwing the cover back into place.



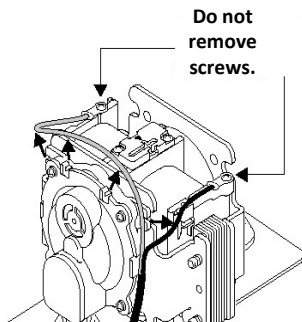
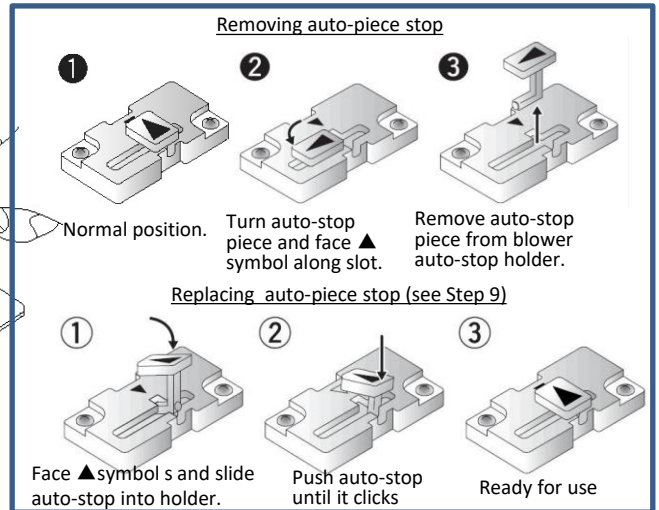
Blower Diaphragm Replacement Procedure



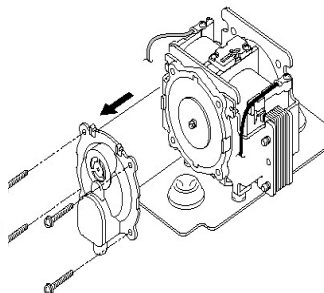
Step 1. Remove cover bolts and screw with 8mm socket and screwdriver.



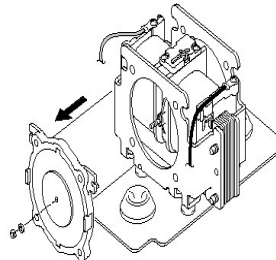
Step 2. Remove autopiece stop as shown →



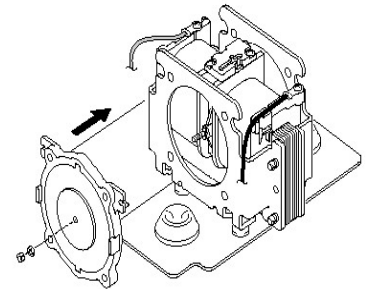
Step 3. Remove power cable from 4 hooks. **Do not remove screws.**



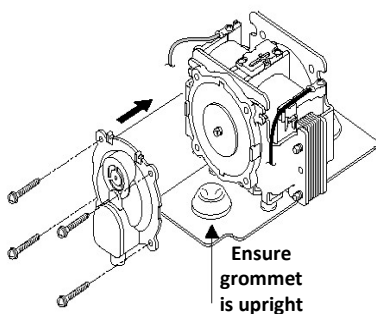
Step 4. Remove 4 screws from one casing.



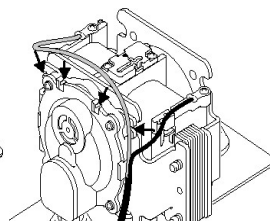
Step 5. Remove nylon nut and diaphragm from body.



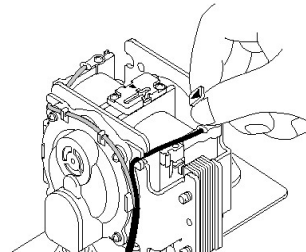
Step 6. Install new diaphragm using new nylon nut provided. Torque tighten to about 1 Nm.



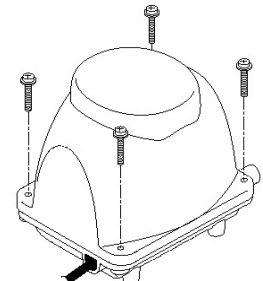
Step 7. Insert casing air outlet into rubber grommet. Secure with 4 screws. Repeat Steps 4-7 for 2nd diaphragm.



Step 8. Fit power cable onto 4 hooks.



Step 9. Re-set auto-piece stop as shown above.

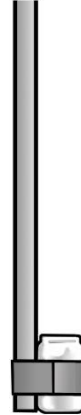


Step 10. Replace cover bolts and screw.

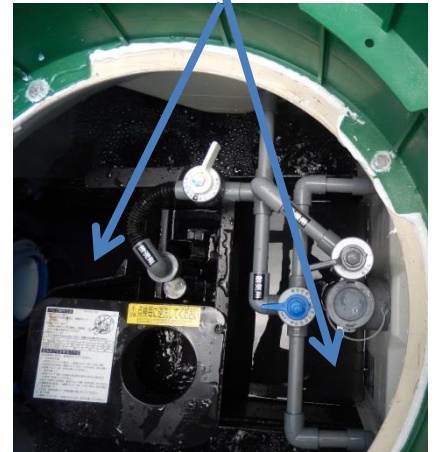
Open all access covers and secure the area around the access openings.

5. Treated Effluent Check. (Recommended frequency: 1x every 6 months)

- ✓ Collect a sample of treated effluent from the aeration chamber and evaluate for clarity and odor and pH. Sample should be nearly clear and with a faint musty smell. If sample is cloudy or exhibits a septic odor, then the system is not treating properly and requires maintenance. Please refer to the Troubleshooting Guide for direction, pH should be checked. If too low, procedures should be implemented to correct. (see Troubleshooting Guide).

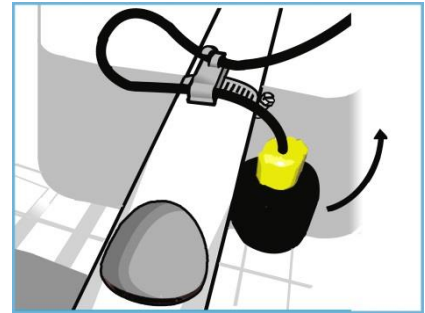


Take samples from either "Storage Chamber" or "Disinfection Chamber" (unless chlorine is used).



6. High Water Float Switch Check. (Recommended frequency: Start-up and 1x every 6 months)

- ✓ Check that the high water float switch is operating freely. Lift up the high water float switch to check that the alarm is triggered. (Note: Float's activation horizon is 1.5" above or below level horizon).



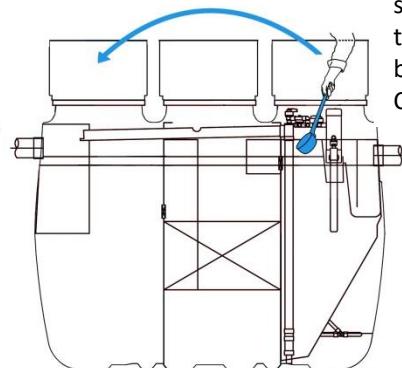
7. Inflow Pipe Check. (Recommended frequency: Start-up and 1x every 6 months)

- ✓ Make sure that the inflow pipe is not blocked.



8. Transfer Scum. (Recommended frequency: 1x every 6 months)

- ✓ If any scum appears in the Chamber 3, scoop with a ladle or a collection jar and transfer it into the sedimentation chamber.



Use ladle or sample jar to transfer scum back to Chamber 1.

9. Set Recirculation Control Valve. (gray) (Recommended frequency: Start-up and 1x every 6 months)

- ✓ The recirculation valve (gray) should be set to its default setting range as shown →

| Model | Default Setting (%) |
|-------|---------------------|
| CEN5 | 35% to 40% |
| CEN7 | 25% to 35% |
| CEN10 | 25% to 35% |

Important! Normal recirculation flow should be level with the top edge of the airlift pumpback line cut-out spilling into Chamber 1. If backflow is too high or too low, this typically indicates that service cleaning is required (O&M Steps 12-16).



10. Check/Set Aeration Balance Control Valve (blue). (Recommended frequency: Start-up and 1x every 6 months).

- ✓ The default, normal setting for the Aeration Control Valve is 50%. Visually observe the airflow rates on each side of the plant by checking to see if bubbles are evenly distributed on both sides of the aeration chamber. If there is an obvious discrepancy in airflow between the two sides, adjust the Aeration Balance Control Valve so that the airflow is equal. Important! If adjustment of this valve is ineffective, then the likely cause of uneven bubbles is usually a blockage in the aeration pipes and is corrected with aeration pipe cleaning: See O&M Step # 14.



At start-up, and for standard operation, the Aeration Balance Control Valve (blue) should be set to 50%.

11. Check/Set Effluent Airlift Valve (white). (Recommended frequency: Start-up and 1x every 6 months)

- ✓ The Effluent Control Valve is initially set to 40% and there is typically no need for it to be adjusted under standard operating conditions.



At start-up, and for standard operation, the Effluent Airlift Valve (white) should be set to 40%. 18

12. Backwash and Sludge Transfer. (Recommended frequency: 1x every 6 months)

- ✓ Perform a backwash and sludge transfer operation as follows:

Excessive biofilm growth on the contact and filter media (Chambers 2 and 3) may cause partial clogging or short circuiting and deteriorate the performance of the system. It is essential to carry out this backwash operation and sludge transfer at every maintenance visit.

- A. Shut off the Effluent Air-lift Pump by turning the Effluent Control Valve (white valve) clockwise until it won't turn any more.



- B. Transfer the sludge on the bottom of the aeration chamber by turning the Recirculation Control Valve (grey valve) to 70-80 and wait for one minute.



- C. Reset the Recirculation Control Valve (grey valve) to the original position.



CEN Systems

- D. Aerate one side of the chamber by turning the Aeration Balance Control Valve (blue valve) fully one way. Wait for one minute, and then turn the valve fully to the opposite direction. Wait for another minute, and then reset the valve to the original position.



- E. Repeat Steps B-D three times.

- F. Final repeat of Step B.

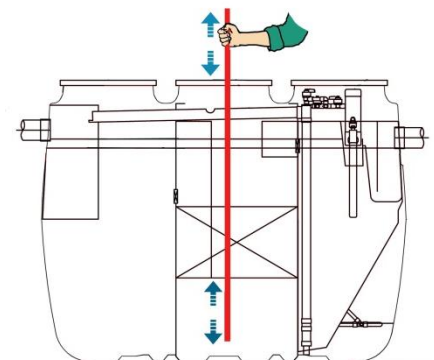
- G. Flush the Effluent Control Valve (white) by rotating the valve back and forth from 0 to 100 several times.



- H. Reset the Recirculation Control Valve (grey valve) and the Effluent Control Valve (white valve) to their original positions. Make sure that the aeration is working properly.



- I. Poke and penetrate into the anaerobic filtration media with a small diameter PVC pipe (e.g. ½-inch) gently and evenly throughout Anaerobic Filtration Chamber for media degassing. This is a simple but essential procedure to assure uniform media contact and filtration.



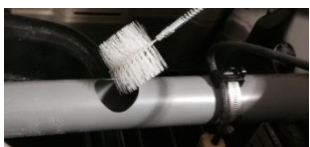
13. Check / Clean Effluent Airlift Pipe. (Recommended frequency: Start-up and 1x every 6 months)

- ✓ Check the observation port in the airlift line to see if there is smooth water flow from the effluent airlift pump. If there is uneven flow or a disruption in flow, then clean the airlift pipe with a cleaning brush.

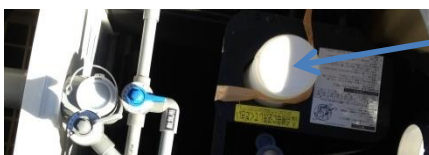


14. Clean Recirculation Airlift Pump (Recommended frequency: 1x every 6 months)

- ✓ Biofilm build-up in the recirculation air-lift pump may affect the recirculation rate. Remove the plastic cap on the air-lift head, clean inside the pipe with a pipe cleaning brush. Also clean the recirculation pumpback line as shown.



- ✓ **15. Refill the chlorinator (if applicable)**
Place refill chlorination tablets in the chlorinator tube and adjust the dissolve rate by rotating the bottom cap.



16. Cleaning Aeration Pipes (Recommended frequency: 1x every 6 months or as required)

- ✓ Aeration Pipes should be cleaned if bubbles are unevenly distributed even after adjusting the aeration balance or the recirculation flow rate has increased considerably without resetting Recirculation Valve (gray valve).

Use hose adaptor supplied by Fuji Clean USA.

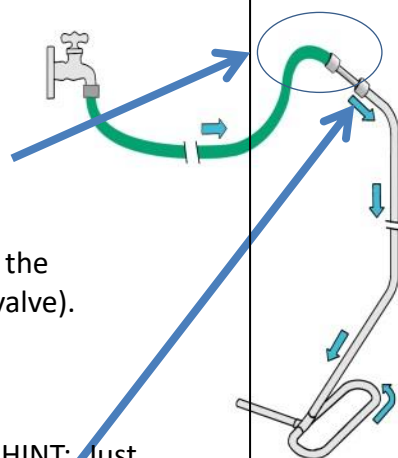
A. Close the Recirculation Control Valve (grey valve) and the Effluent Control Valve (white valve).

B. Turn off the blower.

C. Disconnect a barrel union. HINT: **Just loosen union and pull off air line. Do not totally disconnect barrel union.**

Clean With Hose: (Use for standard cleaning) Attach adaptor with check valve (provided by manufacturer) to garden hose and connect with aeration pipe. Run water from spigot for 1 minute. Repeat for the 2nd aeration pipe.

D. Reconnect aeration pipes, tighten and then turn on blower and re-set standard valve settings (see O&M Procedure #'s 10-12)



17. Measure Sludge and Pump Out if Necessary (Recommended frequency: 1x every 2 years or as required)

- ✓ Unit should be pumped out if one or more of the following conditions exist:
- Biological treatment performance is severely deteriorated due to excessive amounts of oil or chemicals which interfere with the bacterial activity.
 - For residential models, when sludge levels reach more than 35-inches in Chamber 1 or more than 16-inches in Chamber 2.
 - Abnormal rise of the water level.
 - Excessive scum builds up in Chamber 2, the Anaerobic Filtration Chamber and large amounts of solids flow into Chamber 3, the Aerobic Filtration Chamber, even after performing a sludge transfer operation (O&M procedure #12).

FUJI CLEAN PUMP-OUT INSTRUCTIONS

Step 1. Turn off all electrical components.

Step 2. Clean the inlet and outlet pipe.

Step 3. Transfer suspended solids and scum from Chamber 3 back to Chamber 1.

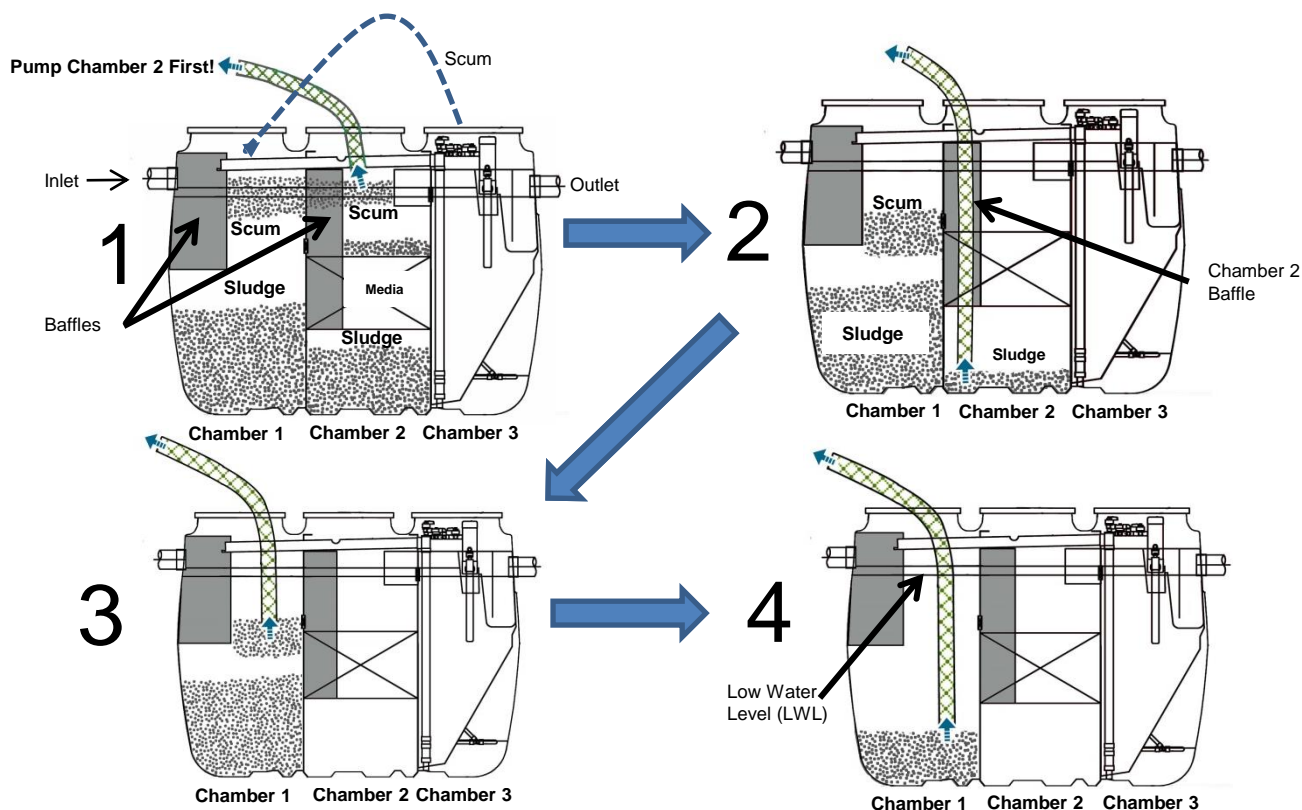
Step 4. With pumpout hose, remove scum and sludge on the filtration media from Chamber 2 FIRST! Otherwise you risk solids being drawn up into the media in Chamber 2.

Step 5. Insert suction hose into the baffle. Remove sludge from the bottom Chamber 2. Wash media and chamber wall.

Step 6. Remove scum and sludge Chamber 1.

Step 7. Re-fill the system with water to Low Water Level (LWL).

Step 8. Turn on all electrical components.



18. Measure and Record Dissolved Nitrogen with testing strips in applicable sites. (Recommended frequency: 1x every 6 months or as required).



SYSTEM INSPECTION CHECKLIST REPORT – Fuji Clean CEN Systems

To be completed by authorized service provider at each inspection/service visit – 2x per year. Please follow the O&M Maintenance Program in the Fuji Clean O&M Manual. Please contact Fuji Clean USA with questions, comments and/or troubleshooting assistance. The Authorized Service Provider must maintain a copy of this report in records.

SYSTEM SITE

Name: _____

Address: _____

Town/State: _____

Contact: _____

Contact Info: _____

AUTHORIZED SERVICE PROVIDER

Service Date: _____

Name: _____

Company: _____

Town/State: _____

License No. (if applicable): _____

Contact Info: _____

SERVICE PROCEDURE / OPERATION COMMENT / DATA/OBSERVATION (use reverse if nec.)

- | | |
|---------------------------------------------------------------------------------|-------|
| <input type="checkbox"/> 1. Outside Environment Check | _____ |
| <input type="checkbox"/> 2. Blower Box Check | _____ |
| <input type="checkbox"/> 3. Blower Operation and Blower Alarm Check | _____ |
| <input type="checkbox"/> 4. Replace blower Consumable Components if nec. | _____ |
| <input type="checkbox"/> 5. Treated Effluent Check Clarity (Required) | _____ |
| Odor (Required) | _____ |
| pH (Required) | _____ |
| DO (Recommended) | _____ |
| <input type="checkbox"/> 6. High Water Float Switch Check | _____ |
| <input type="checkbox"/> 7. Inflow Pipe Check | _____ |
| <input type="checkbox"/> 8. Transfer Scum to Sedimentation Chamber | _____ |
| <input type="checkbox"/> 9. Check/Set Recirculation Control Valve | _____ |
| <input type="checkbox"/> 10. Check/Set Aeration Balance Control Valve | _____ |
| <input type="checkbox"/> 11. Check/Set Effluent Airlift Valve | _____ |
| <input type="checkbox"/> 12. Backwash and Sludge Transfer (<u>Important!</u>) | _____ |
| <input type="checkbox"/> 13. Check/Clean Effluent Airlift Pipe | _____ |
| <input type="checkbox"/> 14. Check/Clean Recirculation Airlift Pipe | _____ |
| <input type="checkbox"/> 15. Refill Chlorinator (if applicable) | _____ |
| <input type="checkbox"/> 16. Clean Aeration Pipes (if necessary) | _____ |
| <input type="checkbox"/> 17. Measure Sludge and Pump out if necessary* | _____ |
| Sedimentation Chamber (Chamber 1) | _____ |
| Anaerobic Chamber (Chamber 2) | _____ |
| <input type="checkbox"/> 18. Measure & Record Dissolved N (if Applicable) | _____ |
| <input type="checkbox"/> 19. Check Flow Monitor Component (NJ only) | _____ |

* Pump out reminder. If 35" or more of sludge accumulates in the Sedimentation Chamber (1st chamber), or 16" or more in the Anaerobic Chamber (2nd chamber), the system should be pumped. Pump 2nd chamber first followed by the 1st chamber. Please refer to the Fuji Clean USA O&M Manual for detail.

TROUBLESHOOTING

General

| SYMPTOM | SOLUTION |
|------------------------------------------------------------------|-----------------------------------------------------------------------------------------------------------------------------------------------------------------------------------------------------------------------------------------------------------------------------------------------------------------------------------------------------------------------------------------------------------------------------------------------------------------------------------|
| Water is ponding around risers and covers | Landscaping is necessary (possibly involving addition of fill material) so that water drains away from risers and covers. Note: risers may be added to the unit as necessary, but service personnel must be able to reach into the unit and move controls. Recommended maximum riser height is 24-inches. |
| Strong and unusual odor exists even with the manhole lids closed | <p>During the first few weeks of operation there may be noticeable odor from the system. This should cease once the bacteria are established.</p> <p>If odor persists, seeding material may be added to both anaerobic and aeration chambers, and/or the recirculation rate may be increased to 35%, the upper end of the normal operation range.</p> <p>If odor continues to persist, please contact manufacturer for instructions. Installation of a vent may be necessary.</p> |
| Blower is making an unusually loud noise | Normal blower operation is quiet. Typically a loud or rattling blower noise is created when the blower is in contact with its housing, or has slipped off its base platform. |

TROUBLESHOOTING

Chamber 1. Sedimentation Chamber

| SYMPTOM | SOLUTION |
|----------------------------------------------------------------------------------|--------------------------------------------------------------------------------------------------------------------------------------------------------------------------|
| Inlet pipe is blocked | Remove the blockage. |
| Excessive scum accumulations (Scum layer reaches the top of the influent baffle) | Measure sludge level. If the depth of sludge accumulation is less than 24-inches (or 18-inches in Chamber 2), break the scum layer, otherwise have the plant pumped out. |
| Excessive sludge accumulations (Depth of sludge layer exceeds 24-inches) | If the sludge exceeds the holding capacity, have the plant pumped out. |
| Foreign materials, excessive oil or fat entering the system | Remind the homeowner to refrain from disposing harmful substances into their system. (Please refer to Homeowner's Manual for listing.) |
| | |

TROUBLESHOOTING

Chamber 2. Anaerobic Filtration Chamber

| SYMPTOM | SOLUTION |
|---------------------------------------------------------------------------------------------------------|--------------------------------------------------------------------------------------------------------------------------------------------------------------------------------------------------------------------------------------------------------------------------------------------------------------------------|
| Excessive scum accumulation (Less than 4-inches) | If Chamber 1, the Sedimentation Chamber still has the remaining sludge holding capacity, (less than 24-inches of sludge build-up), transfer the scum to the sedimentation chamber, otherwise have the plant pumped out. |
| Excessive scum accumulation (More than 4-inches) | Have the plant pumped out. |
| Excessive sludge accumulations | If the bottom sludge layer is thicker than 18-inches and excessive sludge has accumulated on the filtration media, have the plant pumped out. |
| Filtration media is blocked up. (The water level in Chamber 2's media is lower than that in the baffle) | <p>Perform a degassing operation on the filtration media. (Poke media with a section of PVC pipe. See O&M procedure #12).</p> <p>If the problem still persists even after the degassing and sludge transfer operation, pressure wash the filtration media using an effluent pump and hose affixed to a PVC pipe.</p> |
| Foreign materials, excessive oil or fat entering the system | Remind the homeowner to refrain from disposing prohibited substances and limited-use substances. |

TROUBLESHOOTING

Chamber 3. Aerobic Contact Filtration Chamber

| SYMPTOM | SOLUTION |
|------------------------------------------------------------------------------------------|---------------------------------------------------------------------------------------------------------------------------------------------------------------------------------------------------------------------------------------------------------------------------------------------------------------------------------------------------|
| Bubbles are not evenly distributed throughout the chamber or there are no bubbles at all | <ul style="list-style-type: none"> • Adjust the aeration control valve. • Check to make sure that there is no leakage from the aeration pipework. • Check to make sure that the blower operates properly. • Clean the aeration pipes. • Perform a backwash operation. (O&M Procedure #12). |
| Dissolved Oxygen is less than 1.0 mg/L. | <ul style="list-style-type: none"> • Check to make sure that the blower operates properly. • Perform a backwash operation. (O&M Procedure #12). |
| Recirculation rate is unable to be adjusted or no recirculation at all. | <ul style="list-style-type: none"> • Adjust the recirculation control valve. • Check to make sure that there is no leakage from the aeration pipework. • Check to make sure that the blower operates properly. |
| Recirculation flow rate is too high | <ul style="list-style-type: none"> • Clean the aeration pipes. |
| Recirculation flow rate is too low | <ul style="list-style-type: none"> • Clean the recirculation airlift pump. |
| Excessive foaming | <ul style="list-style-type: none"> • Some foaming may occur during the early stage of operation. This should cease once the bacteria are established. Seeding may also be effective. Please contact your distributor for additional seeding information. |
| Excessive suspended solids | <ul style="list-style-type: none"> • Perform a backwash operation. |
| Cold water is hampering treatment | <p>The following measures will allow greater oxygen penetration into biofilm:</p> <ul style="list-style-type: none"> • Increase frequency of backwash • Increase blower size • Perform desludge operation (i.e. sludge pumpout) |

TROUBLESHOOTING

Chamber 3a. Storage Chamber

| SYMPTOM | SOLUTION |
|---------------------------------------------------|--------------------------------------------------------------------------------------------------------------------------------------------------------------------------------------------------------------------------------------------------------------------------------------------------------------------------------------------------------------------|
| Scum forming | <ul style="list-style-type: none"> • Transfer the scum to Chamber 1, the Sedimentation Chamber, using a pump, ladle or suitable container. • Increase the recirculation rate (within the normal operating range). |
| Excessive sludge accumulations | <ul style="list-style-type: none"> • Transfer the sludge to Chamber 1, the Sedimentation Chamber, using a pump, ladle or suitable container. |
| Ph is too low or too high. (pH < 5.8 or pH > 8.6) | <ul style="list-style-type: none"> • Check to make sure the recirculation rate is appropriate. • Remind homeowner of what cannot be put into this system (refer to Homeowner's Manual). • Install a slow-release lime dispersal system into the sedimentation chamber to raise the pH. Please contact Fuji Clean USA for details. |
| Excessive biofilm on the chamber wall | <ul style="list-style-type: none"> • Clean the wall with brush or water pressure and transfer solids to the sedimentation chamber. |
| Effluent airlift pump is not working | <ul style="list-style-type: none"> • Clean the airlift pump. • Flush the effluent control valve. • Check to make sure there is no leakage from the blower pipework. • Check to make sure that the blower operates properly. |

TROUBLESHOOTING

Air Blower

| What to observe | Status | How to solve the problem |
|------------------------------------------------------------------------------|--------------------------------------------------------|-------------------------------------------------------------------------------------------|
| Blower is not working | | |
| Power plug | Power plug is disconnected. | Connect the power plug to the outlet. |
| Alarm triggered (if alarm exists) | Diaphragm is damaged. Auto-stop function is activated. | Replace the diaphragm kit. Re-insert the auto-stop piece. |
| | Check if blower is electrified. | Replace the power cable. |
| | | Replace the auto-stop piece. |
| | | Replace the electric magnet. |
| | Internal flat terminal has fallen out. | Secure the terminal. |
| Blower is making an abnormal or excessive operating noise. | | |
| Installed condition | Blower is not secured. | Secure blower in horizontal position. |
| Oscillator | Oscillator is damaged. | Clean the inside of aeration pipe by rotating valve and adjust aeration level to be even. |
| | Oscillator nut is loose. | Tighten oscillator nut. |
| Low air volume or misplaced air from aeration pipes (treatment plant) | | |
| Faulty diaphragm | Diaphragm, outlet. | Replace diaphragm using diaphragm kit. |
| Aeration leak | Grommet partition | Check internal parts assembly and re-attach the pump. |
| Air filter is clogged | Air filter | Clean or replace air filter. |
| Aeration pipes | Pipes are disconnected. | Reattach / repair pipes. |
| | Clogging | Clean the inside of aeration pipes. |