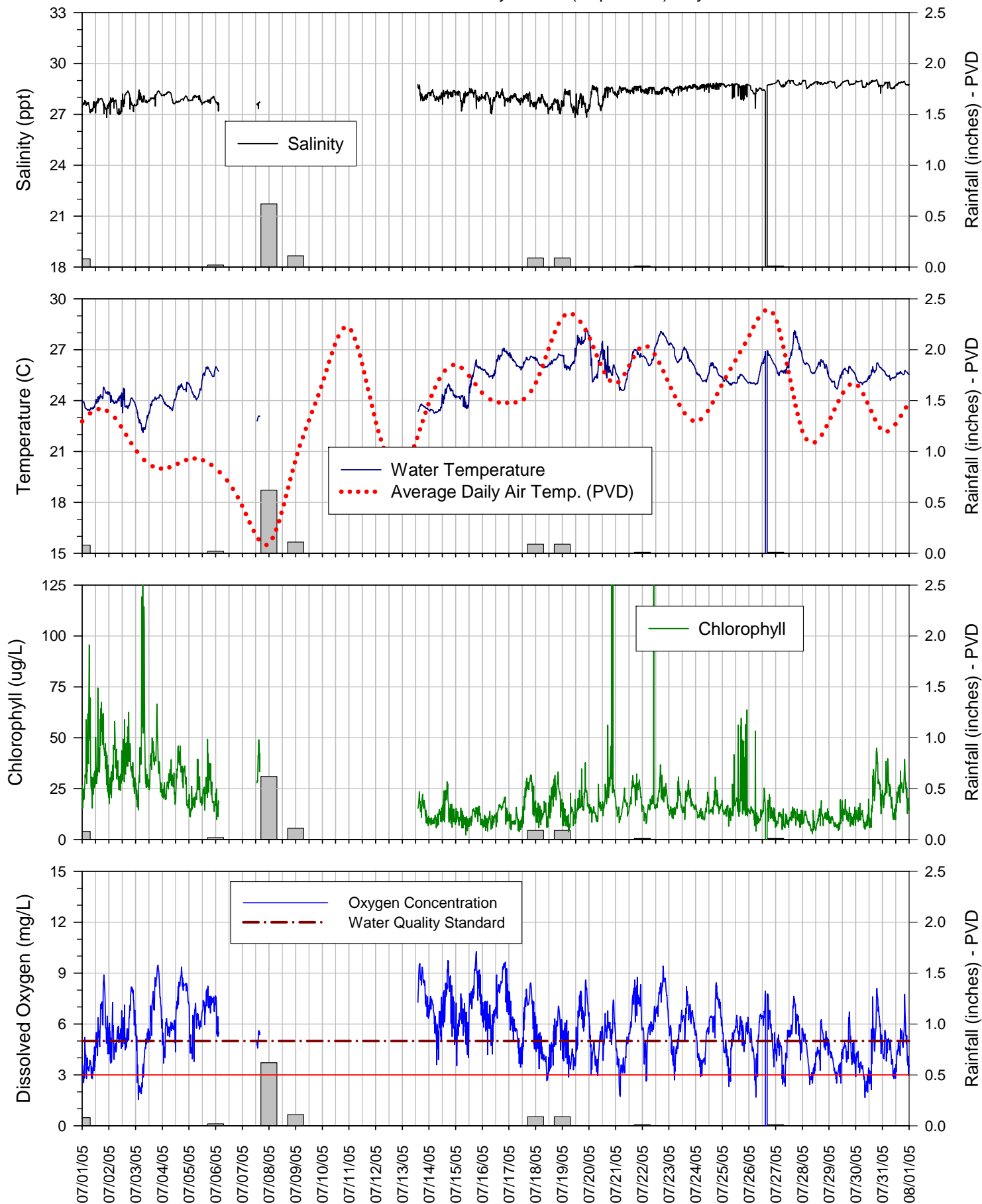
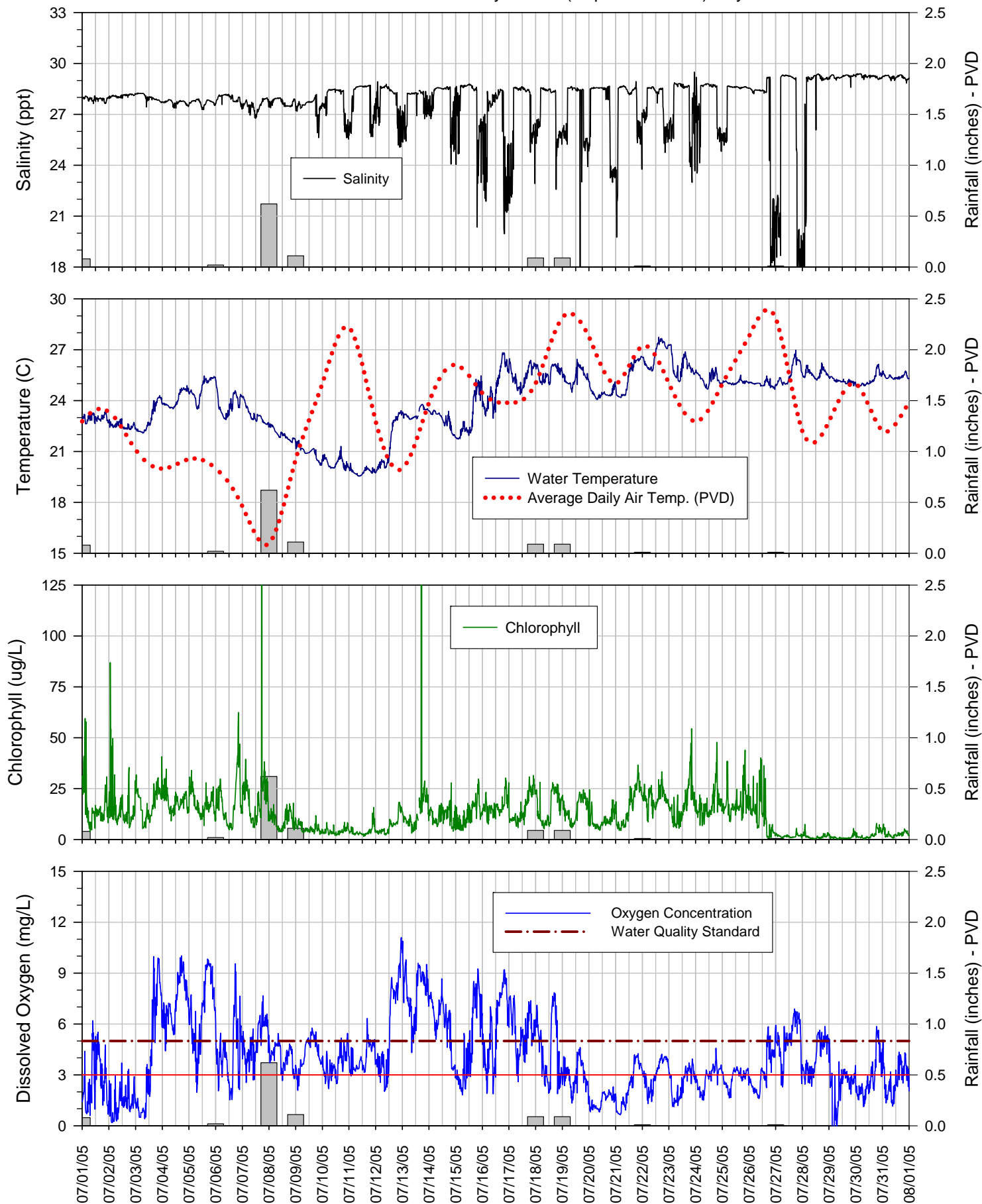


### Surface Sonde at Greenwich Bay Marina (Depth ~0.5) July 2005



The data displayed on this chart is provisional and is subject to change based on post-season quality control analyses. This station is maintained by RIDEM - Office of Water Resources and URI/GSO.

### Bottom Sonde at Greenwich Bay Marina (Depth ~2 meters) July 2005



The data displayed on this chart is provisional and is subject to change based on post-season quality control analyses. This station is maintained by RIDEM - Office of Water Resources and URI/GSO.