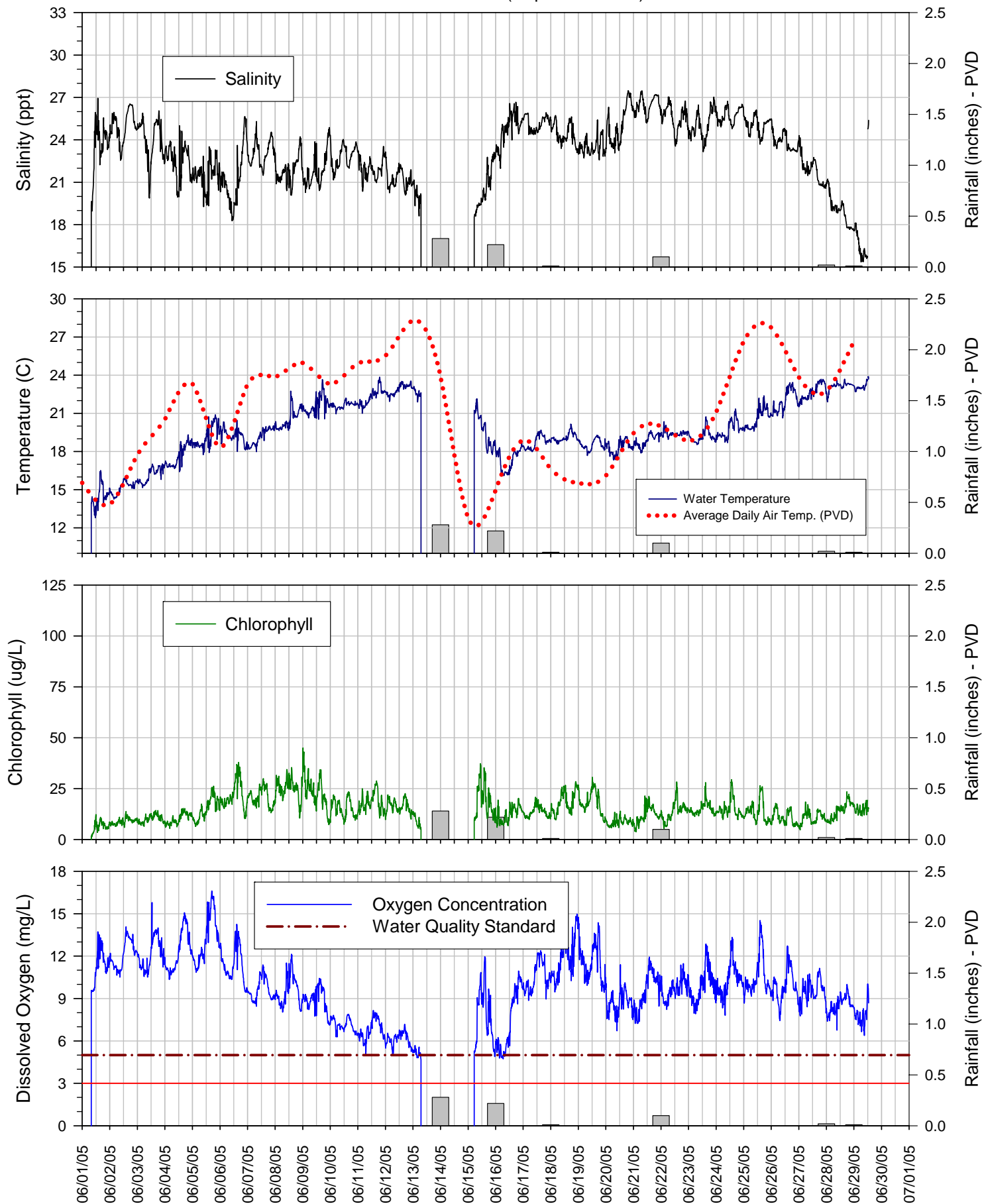
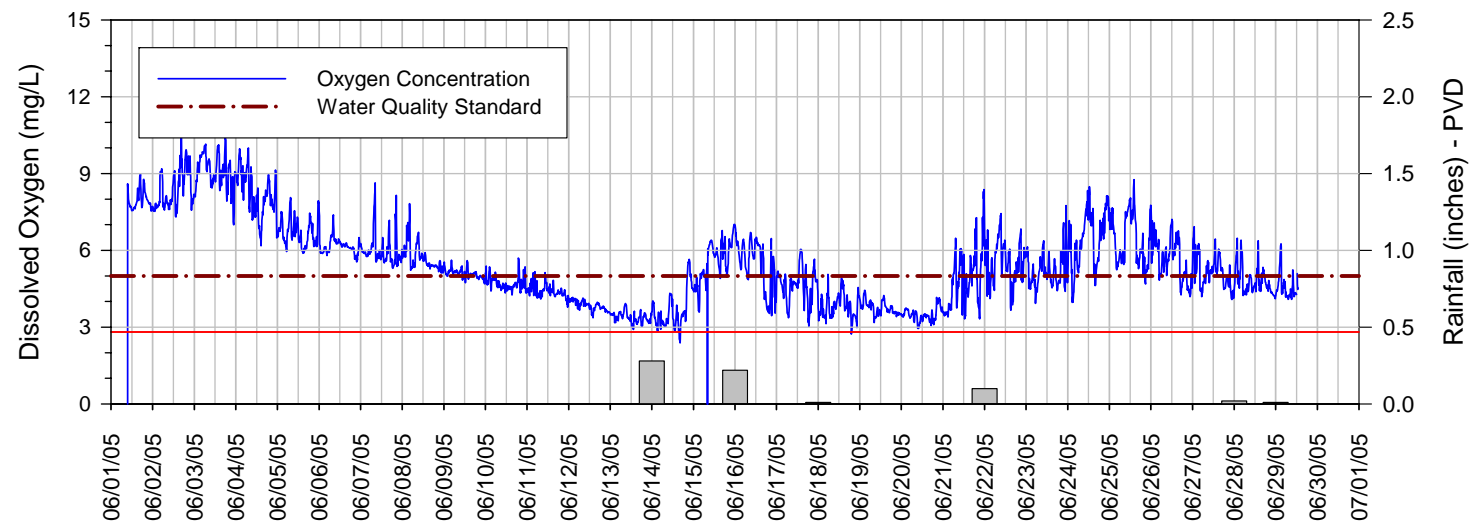
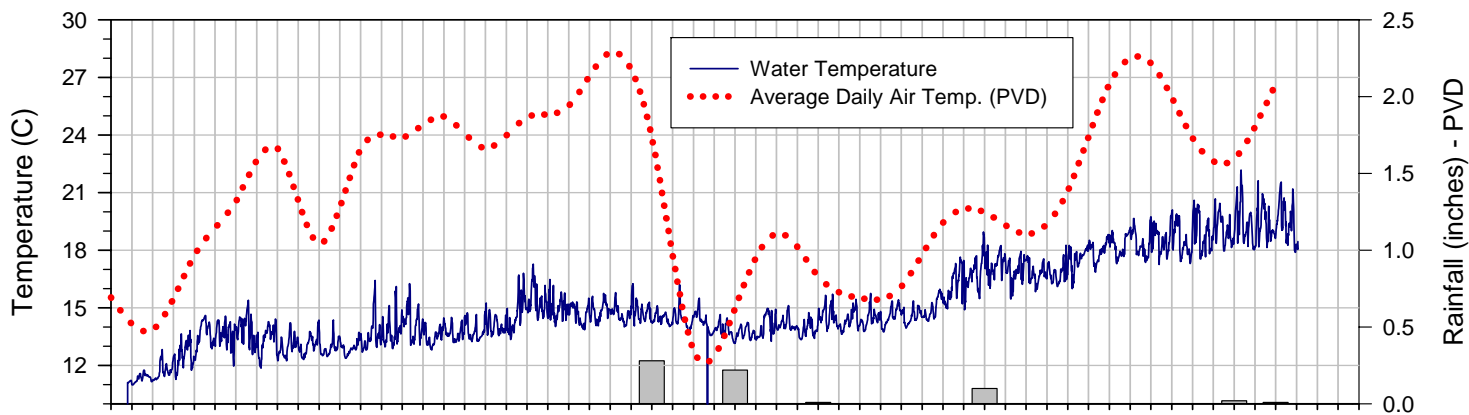
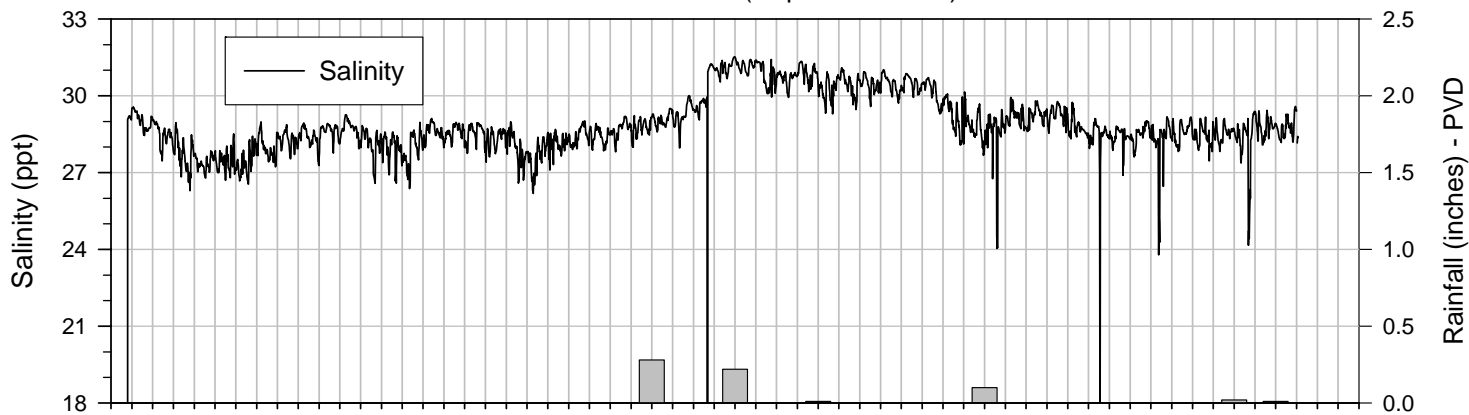


### Surface Sonde at Bullock Reach (Depth ~.5 meter) June 2005



The data displayed on this chart is provisional and is subject to change based on post-season quality control analyses. During 2005, this station is maintained by the Narragansett Bay Commission with equipment on loan from the RIDEM Office of Water Resources.

Bottom Sonde at Bullock Reach (Depth ~9 meters) June 2005



The data displayed on this chart is provisional and is subject to change based on post-season quality control analyses. During 2005, this station is maintained by the Narragansett Bay Commission with equipment on loan from the RIDEM Office of Water Resources.