

Rhode Island Shellfish Harvest Area Tagging Map

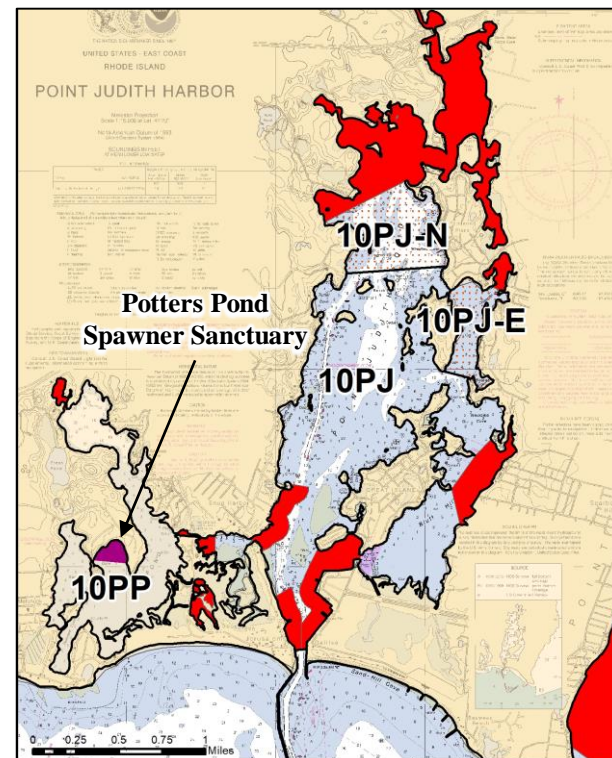
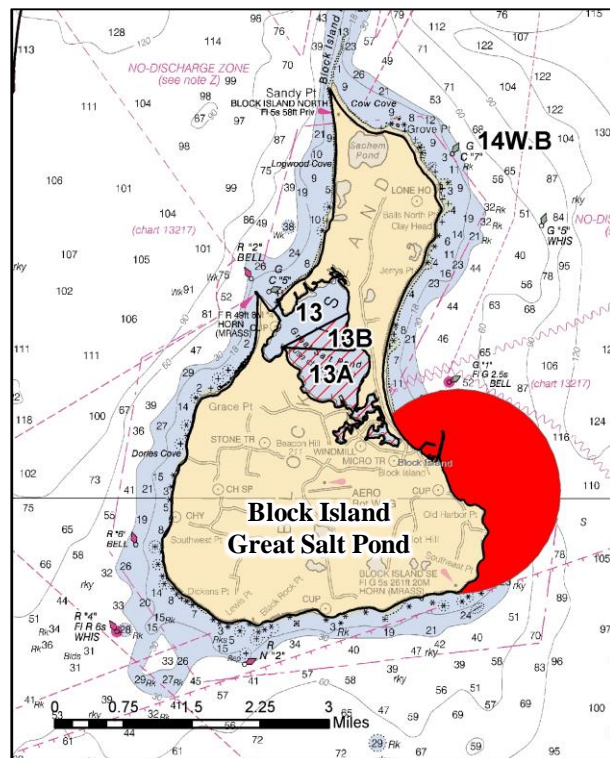
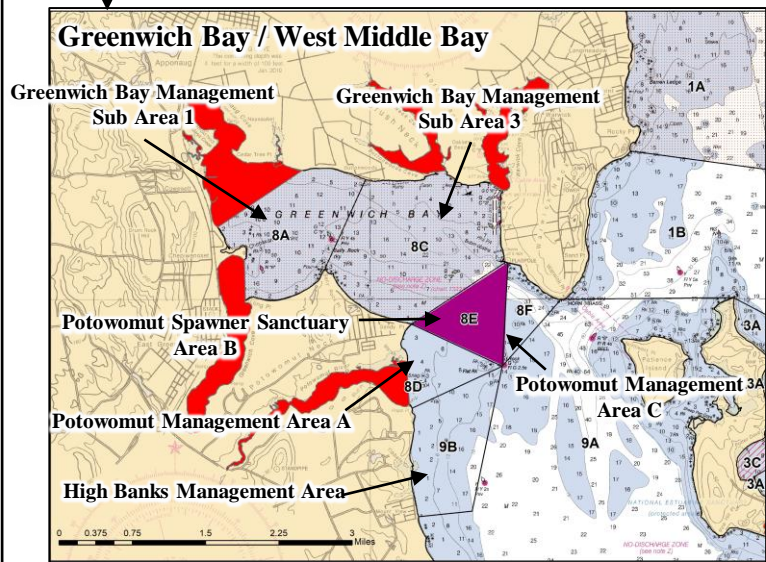
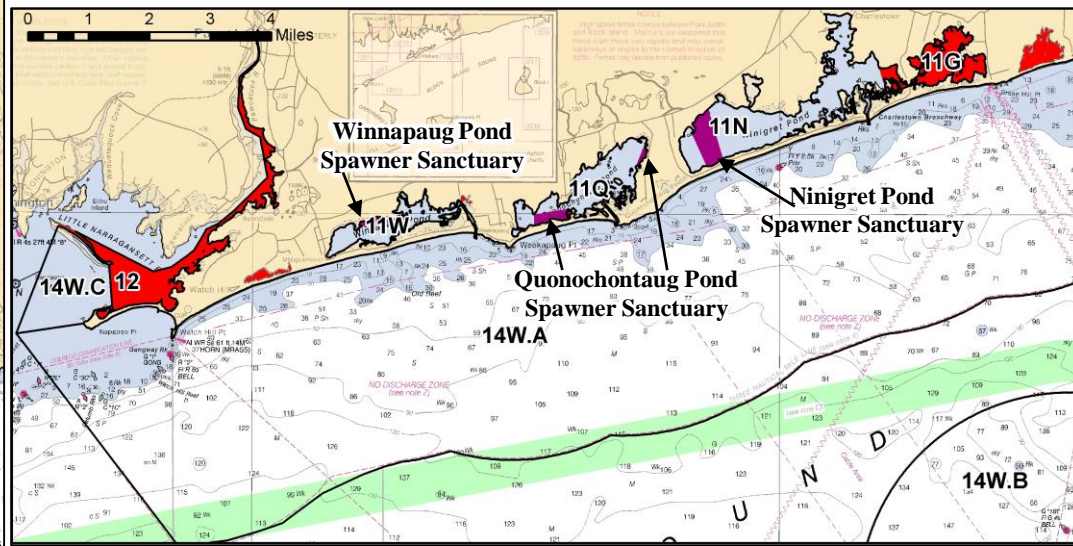
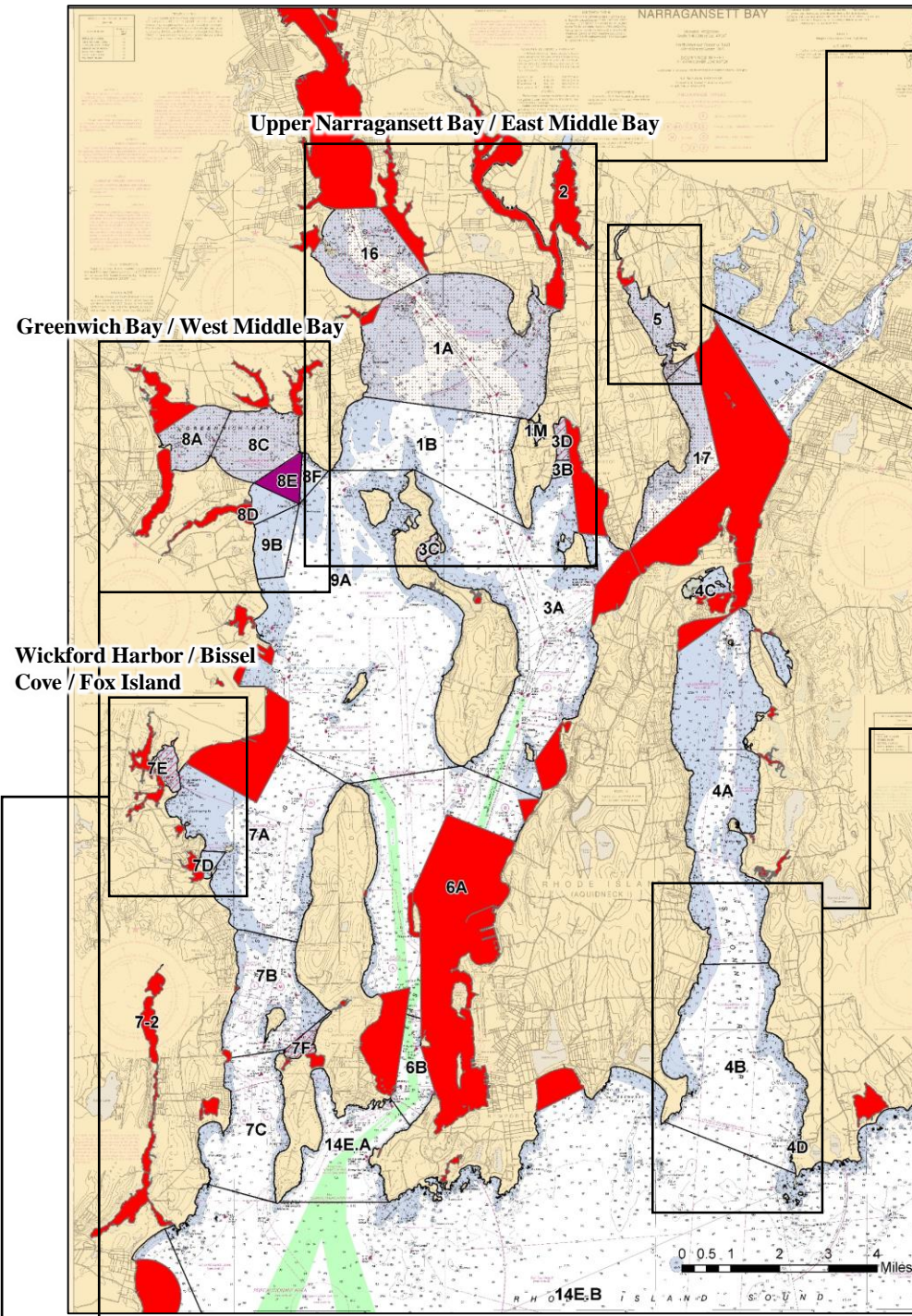
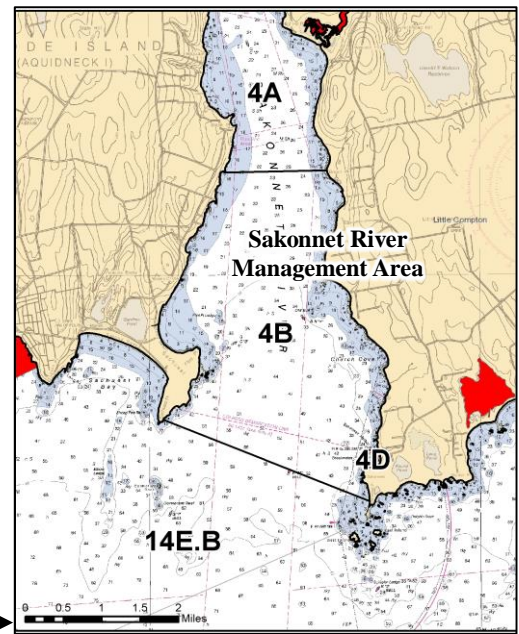
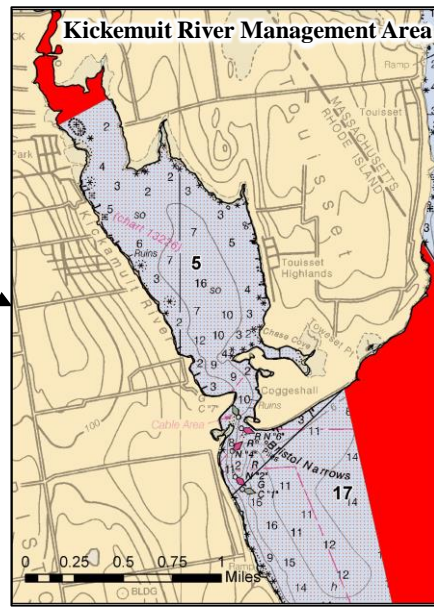
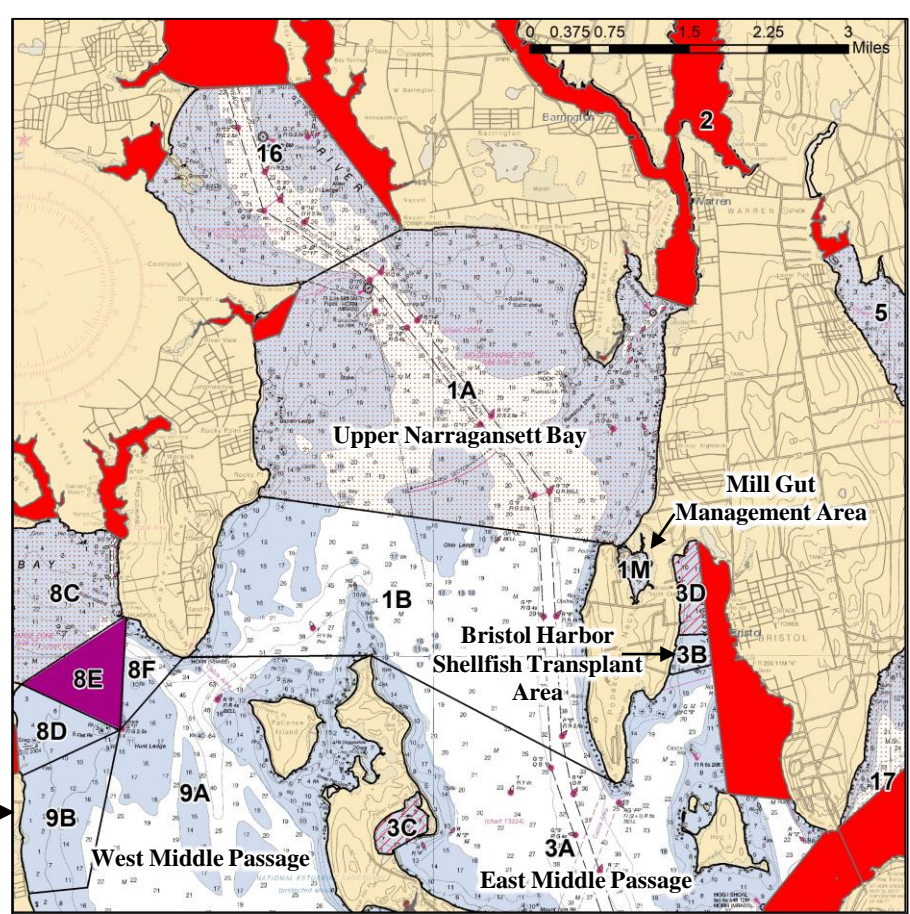
Rhode Island Department of Environmental Management
 Division of Marine Fisheries / Office of Water Resources – Shellfish Program
 Standard Atlantic Fisheries Information System (SAFIS)

This map describes shellfish harvest areas for the sole purpose of reporting landings for fisheries management needs.

Questions regarding Shellfish Management Rules shall be directed to 401-423-1920 or on-line at: www.dem.ri.gov/marine

RIDEM's Office of Water Resources Water Quality Shellfish Classifications are based on water quality considerations and shall supersede all management rules. Questions can be directed to program staff at 401-222-4700.

Refer to the current documents "Notice of Polluted Shellfishing Grounds" for detailed descriptions of Approved, Conditionally Approved, Seasonally Approved and Prohibited areas. An on-line version of the document is available at: www.dem.ri.gov/shellfish



Legend

- Tagging Areas (dotted pattern)
- Shellfish Management**
 - Reserve (yellow)
 - Sanctuary (purple)
- Shellfish Classification**
 - Conditional Closure (dotted pattern)
 - Seasonal Closure (red diagonal lines)
 - Shellfishing Prohibited (red)

