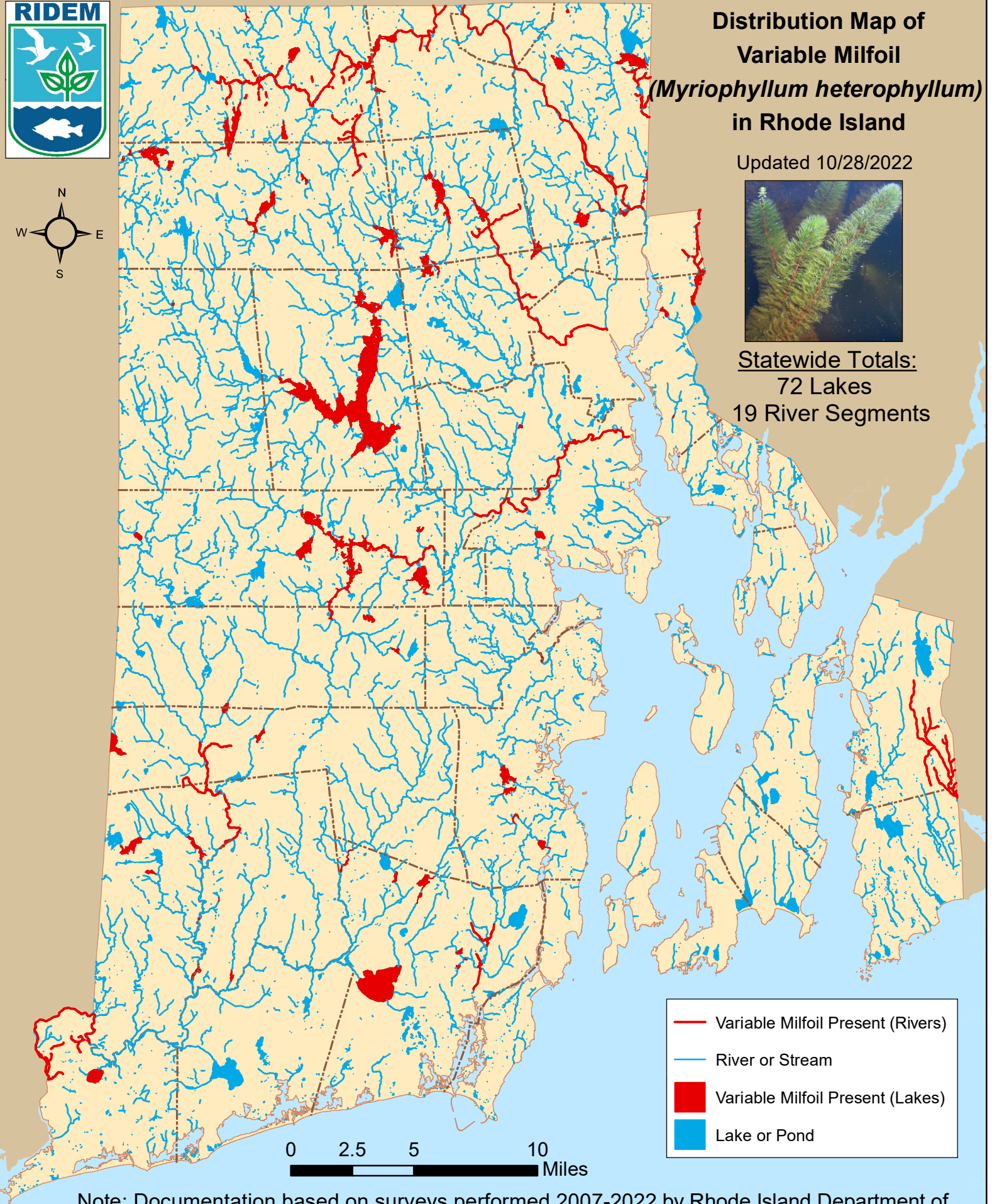


Distribution Map of Variable Milfoil (*Myriophyllum heterophyllum*) in Rhode Island

Updated 10/28/2022



Statewide Totals:
72 Lakes
19 River Segments



- Variable Milfoil Present (Rivers)
- River or Stream
- Variable Milfoil Present (Lakes)
- Lake or Pond

Note: Documentation based on surveys performed 2007-2022 by Rhode Island Department of Environmental Management (RIDEM) Office of Water Resources. AIS refers only to those plant species present in the floating and submergent plant communities. More information available online: <http://www.dem.ri.gov/programs/water/quality/surface-water/aisplant.php>



Distribution of variable milfoil (*M. heterophyllum*) in RI

river segments listed first alphabetically; then lakes listed by city or town

<u>Town</u>	<u>Waterbody Name</u>	<u>First documented</u>	<u>Last Surveyed</u>
<u>RIVERS</u>			
1	Abbott Run Brook North & Tribs	7/7/2009	7/7/2009
2	Adamsville Brook & Tribs	9/7/2012	9/7/2012
3	Blackstone River (Seg A)	7/22/2009	7/5/2022
4	Branch River & Tribs (Seg A)	7/15/2009	7/20/2009
5	Branch River & Tribs (Seg B)	7/15/2009	7/15/2009
6	Clear River & Tribs (Seg C)	8/1/2007	8/15/2018
7	Clear River (Seg D)	8/1/2007	8/1/2007
8	Pawcatuck River & Tribs	8/6/2009	9/8/2020
9	Pawtuxet River (Main Stem)	6/28/2010	9/9/2020
10	Pawtuxet River (South Branch Seg A)	6/27/2018	6/27/2018
11	Saugatucket River & Tribs	7/20/2010	7/20/2010
12	Tarkiln Brook & Tribs (Seg A)	7/20/2009	7/20/2009
13	Tarkiln Brook & Tribs (Seg B)	5/20/2009	7/20/2009
14	Ten Mile River & Tribs (Seg A)	8/10/2007	6/5/2021
15	Wood River & Tribs (Seg A)	7/9/2009	7/10/2009
16	Wood River (Seg B)	9/30/2008	8/16/2012
17	Woonasquatucket River & Tribs (Seg B)	6/1/2009	6/28/2019
18	Woonasquatucket River & Tribs (Seg C)	6/1/2009	6/4/2019
19	Woonasquatucket River (Seg D)	6/17/2009	6/28/2019

Burrillville



Distribution of variable milfoil (*M. heterophyllum*) in RI

river segments listed first alphabetically; then lakes listed by city or town

<u>Town</u>	<u>Waterbody Name</u>	<u>First documented</u>	<u>Last Surveyed</u>
<u>Burrillville</u>			
20	Echo Lake (Pascoag Reservoir)	9/12/2008	9/13/2012
21	Round Top State Pond	6/11/2010	6/26/2019
22	Spring Lake (Herring Pond)	6/3/2010	6/8/2018
23	Sucker Pond	8/20/2018	8/20/2018
<u>Central Falls</u>			
24	Valley Falls Pond	8/9/2017	9/16/2022
<u>Coventry</u>			
25	Carbuncle Pond	6/15/2009	8/31/2020
26	Coventry Reservoir (Stump Pond)	9/4/2008	7/27/2016
27	Flat River Reservoir (Johnson Pond)	8/22/2008	9/21/2018
28	Tiogue Lake	9/5/2007	9/9/2020
29	Upper Dam Pond	8/28/2020	8/28/2020
<u>Cranston</u>			
30	Meshanticut Pond	8/6/2018	8/15/2022
<u>Cumberland</u>			
31	Arnold Mills Reservoir (Pawtucket Reservoir)	6/24/2011	6/24/2011
32	Carls Pond	9/1/2020	7/8/2022
33	Happy Hollow Pond	8/18/2010	8/18/2010
34	Robin Hollow Pond	8/18/2010	8/18/2010
35	Sneech Pond	6/3/2010	9/24/2018
36	Sylvn's Pond (Sylvn's Brook Pond)	8/7/2014	10/4/2017



Distribution of variable milfoil (*M. heterophyllum*) in RI

river segments listed first alphabetically; then lakes listed by city or town

<u>Town</u>	<u>Waterbody Name</u>	<u>First documented</u>	<u>Last Surveyed</u>
<u>East Providence</u>			
37	Central Pond	9/30/2009	8/13/2020
38	Omega Pond	6/17/2022	8/12/2022
39	Willet Pond	9/11/2012	8/1/2022
<u>Exeter</u>			
40	Beach Pond	6/19/2019	6/19/2019
41	Boone Lake	8/25/2011	8/25/2011
42	Breakheart Pond	9/5/2007	8/19/2020
<u>Foster</u>			
43	Shippee Saw Mill Pond	9/26/2007	8/15/2017
<u>Glocester</u>			
44	Bowdish Reservoir	9/25/2007	6/15/2018
45	Clarksville Pond	6/30/2010	8/24/2018
46	Hawkins Pond (Glocester)	9/28/2016	9/28/2016
47	Keech Pond	9/26/2007	8/1/2017
48	Lake Washington	8/2/2007	6/10/2019
49	Sawmill Pond	6/30/2010	9/5/2018
50	Smith & Sayles Reservoir	9/26/2007	8/30/2021
51	Spring Grove Pond	10/5/2009	6/8/2018
52	Waterman Reservoir	7/17/2009	7/27/2016
<u>Hopkinton</u>			
53	Alton Pond	9/5/2007	6/7/2018
54			



Distribution of variable milfoil (*M. heterophyllum*) in RI

river segments listed first alphabetically; then lakes listed by city or town

<u>Town</u>	<u>Waterbody Name</u>	<u>First documented</u>	<u>Last Surveyed</u>
<u>Hopkinton</u>			
54	Ashville Pond	9/5/2007	7/5/2019
55	Locustville Pond	9/3/2008	9/9/2020
56	Wincheck Pond	6/2/2011	6/2/2011
57	Wyoming Pond	9/30/2008	9/11/2017
<u>Johnston, Smithfield</u>			
58	Slack Reservoir	7/13/2009	10/19/2011
<u>Lincoln</u>			
59	Barney Pond	6/29/2022	6/29/2022
60	Olney Pond	5/27/2010	7/14/2022
<u>North Kingstown</u>			
61	Belleville Ponds	9/10/2007	6/6/2022
62	Carr Pond (N. Kingstown)	9/28/2009	6/16/2016
63	Mill Pond (NK)	8/2/2018	8/2/2018
64	Potowomut Pond	8/29/2008	8/17/2021
65	Secret Lake	7/3/2009	6/18/2010
66	Silver Spring Lake	8/27/2009	8/9/2022
<u>North Providence</u>			
67	Wenscott Reservoir (Twin Rivers)	6/10/2009	8/3/2022
<u>North Smithfield</u>			
68	Slatersville Reservoir	9/25/2007	7/20/2017
69	Tarkiln Pond	6/25/2009	8/30/2018

Richmond



Distribution of variable milfoil (*M. heterophyllum*) in RI

river segments listed first alphabetically; then lakes listed by city or town

<u>Town</u>	<u>Waterbody Name</u>	<u>First documented</u>	<u>Last Surveyed</u>
<u>Richmond</u>			
70	Carolina Trout Pond	7/9/2009	8/28/2017
71	Meadowbrook Pond (Sandy Pond)	10/6/2009	8/21/2017
<u>Scituate</u>			
72	Peeptoad Pond	8/23/2012	8/23/2012
73	Regulating Reservoir	6/17/2010	7/11/2012
74	Scituate Reservoir	8/2/2011	8/3/2011
<u>Smithfield</u>			
75	Georgiaville Pond	8/7/2007	6/28/2019
76	Hawkins Pond	6/23/2015	9/14/2018
77	Woonasquatucket Reservoir (Stump Pond)	7/13/2009	7/31/2018
<u>South Kingstown</u>			
78	Asa Pond	7/2/2019	7/2/2019
79	Barber Pond	8/29/2007	7/27/2017
80	Glen Rock Reservoir	7/1/2010	9/6/2018
81	Hundred Acre Pond	9/3/2009	9/3/2009
82	Peace Dale Reservoir	7/12/2012	8/10/2017
83	Rocky Brook Reservoir	6/14/2010	8/2/2018
84	Thirty Acre Pond	9/3/2009	9/3/2009
85	Worden Pond	10/2/2009	10/2/2009
<u>Warwick</u>			
86	Gorton Pond	8/2/2022	8/2/2022



Distribution of variable milfoil (*M. heterophyllum*) in RI

river segments listed first alphabetically; then lakes listed by city or town

<u>Town</u>	<u>Waterbody Name</u>	<u>First documented</u>	<u>Last Surveyed</u>
<u>West Greenwich</u>			
87	Mishnock Lake	9/4/2008	7/19/2022
88	Reynolds Pond	9/5/2007	6/28/2022
89	Tarbox Pond	9/5/2007	5/22/2021
<u>Westerly</u>			
90	Chapman Pond	7/14/2020	8/10/2022
<u>Woonsocket</u>			
91	Sylvestre Pond	5/27/2015	7/11/2022