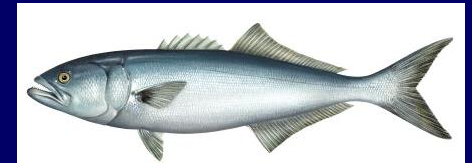


RI Department of Environmental Management

Marine Fisheries

INFORMATIONAL PRE-HEARING WORKSHOP



January 10, 2017



Marine Fisheries Informational Workshop – Rules of Engagement

- RIDFW staff will provide presentation on each of the proposed regulation amendments;
- Discussion will ensue upon completion of each presentation. Discussion should focus on:
 - Understanding of the rationale behind each of the proposed amendments;
 - Recommendations of alternatives.
- **IMPORTANT!** The workshop discussion is *not* an official public record. **Please offer your preferred option(s) and comments for the public hearing record during the public hearing on February XX or during the public comment period.**



Workshop Items

1. **RIMFR-Striped Bass** regarding the following:
 - a. 2017 Recreational management;
 - b. 2017 Commercial management:
 - i. General Category
 - ii. Floating Fish Trap

2. **RIMFR-Menhaden** regarding the following:
 - a. 2017 Commercial management;

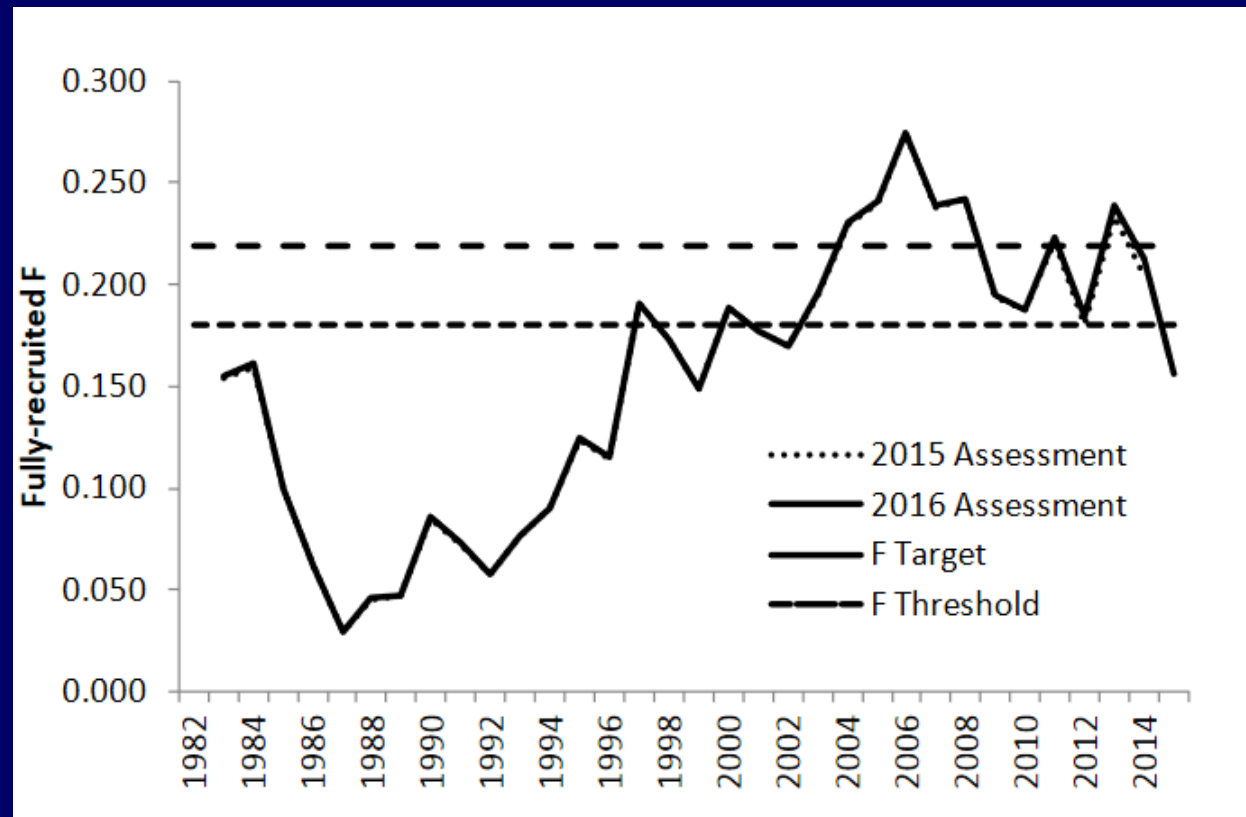
3. **RIMFR-Finfish** regarding the following:
 - a. Tautog
 - i. 2017 Recreational management;
 - ii. 2017 Commercial management;
 - b. **Bluefish**
 - i. 2017 Recreational management;
 - ii. 2017 Commercial management;





Striped Bass Stock Status

- Update in 2016: Based on SAW/SARC 57 and peer review, the striped bass stock is not overfished and overfishing is not occurring relative to biological reference points.
- Fishing mortality was estimated to be 0.16 in 2015, a value below both the fishing mortality threshold (0.22) and the fishing mortality target (0.18).

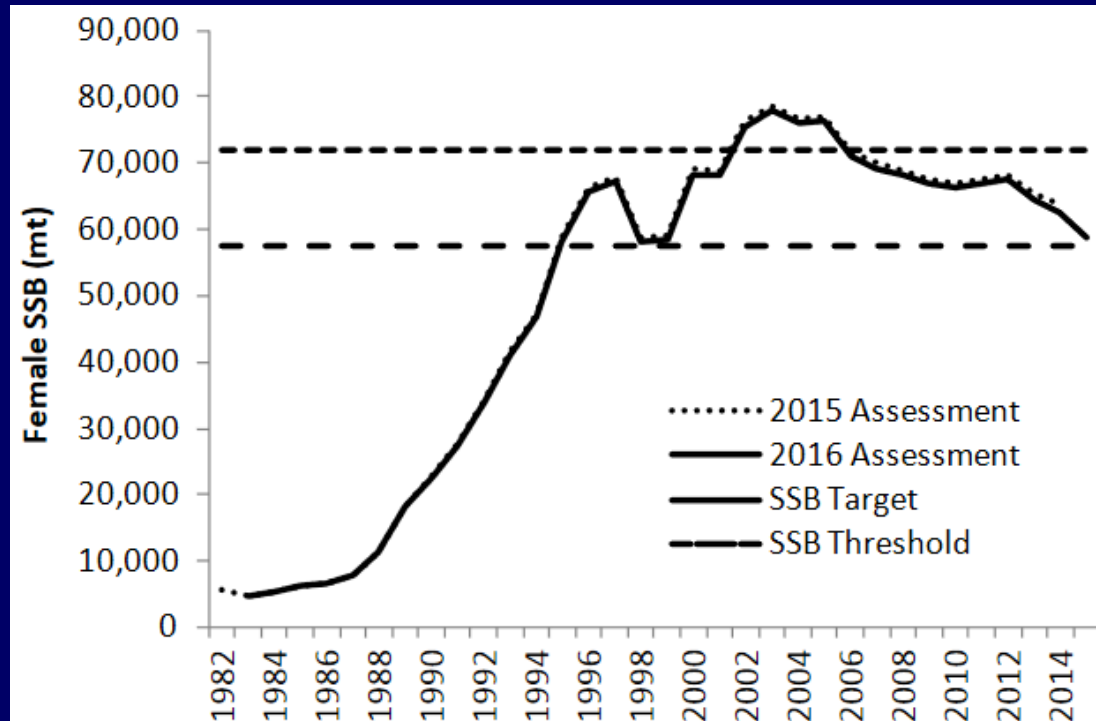


Source: 2016 Update of the Striped Bass Stock Assessment (Figure 14)



Striped Bass Stock Status cont'd:

- SSB was estimated to be 129 million pounds in 2015, just above the threshold but below the target (127 million and 159 million respectively)
- In 2015 high recruitment and a strong year class were observed
- In 2016 the MD YOY survey indicated a very low abundance

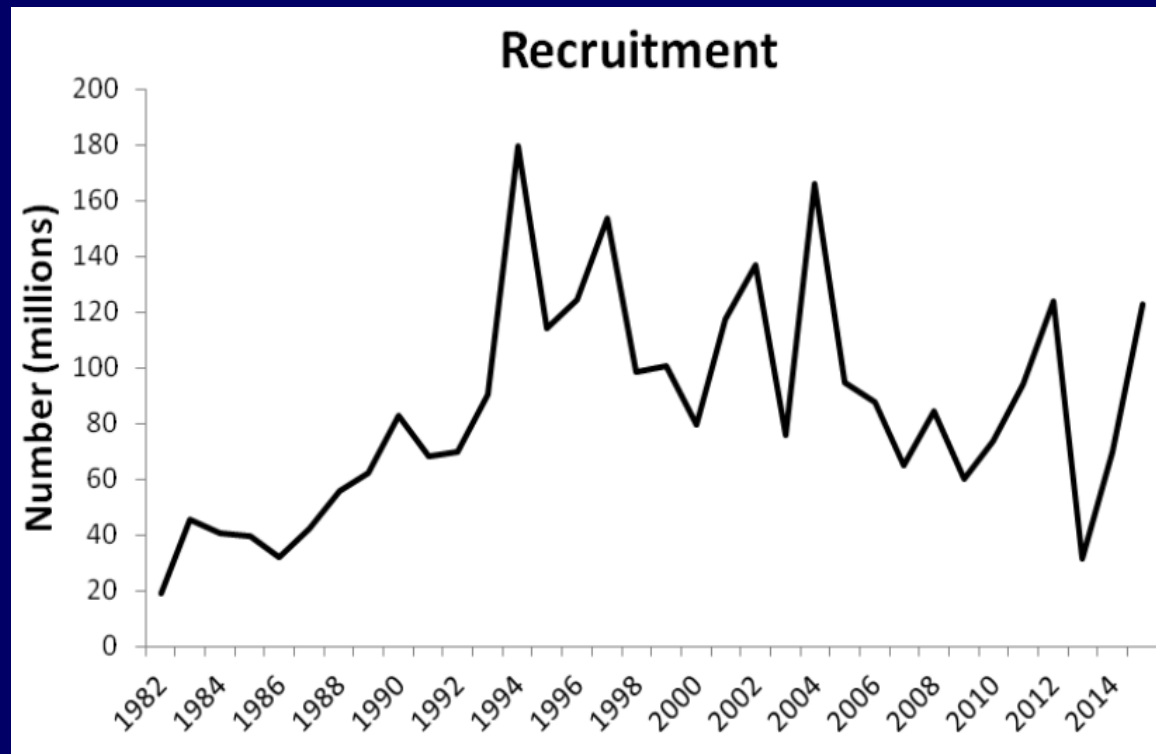


Source: 2016 Update of the Striped Bass Stock Assessment (Figure 14)



Striped Bass Stock Status cont'd:

- SSB was estimated to be 129 million pounds in 2015, just above the threshold but below the target (127 million and 159 million respectively)
- In 2015 high recruitment and a strong year class were observed
- In 2016 the MD YOY survey indicated a very low abundance

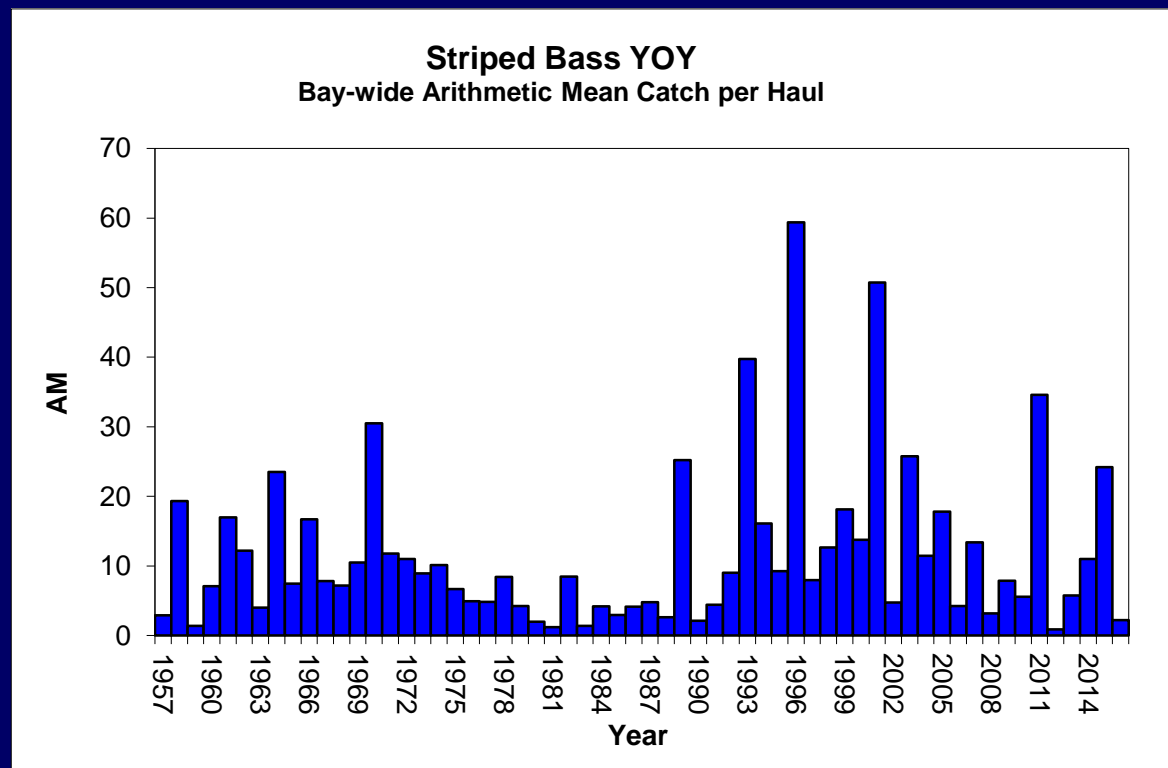


Source: 2016 Update of the Striped Bass Stock Assessment (Figure 9)



Striped Bass Stock Status cont'd:

- SSB was estimated to be 129 million pounds in 2015, just above the threshold but below the target (127 million and 159 million respectively)
- In 2015 high recruitment and a strong year class were observed
- In 2016 the MD YOY survey indicated a very low abundance



Source: MD DNR, 2016

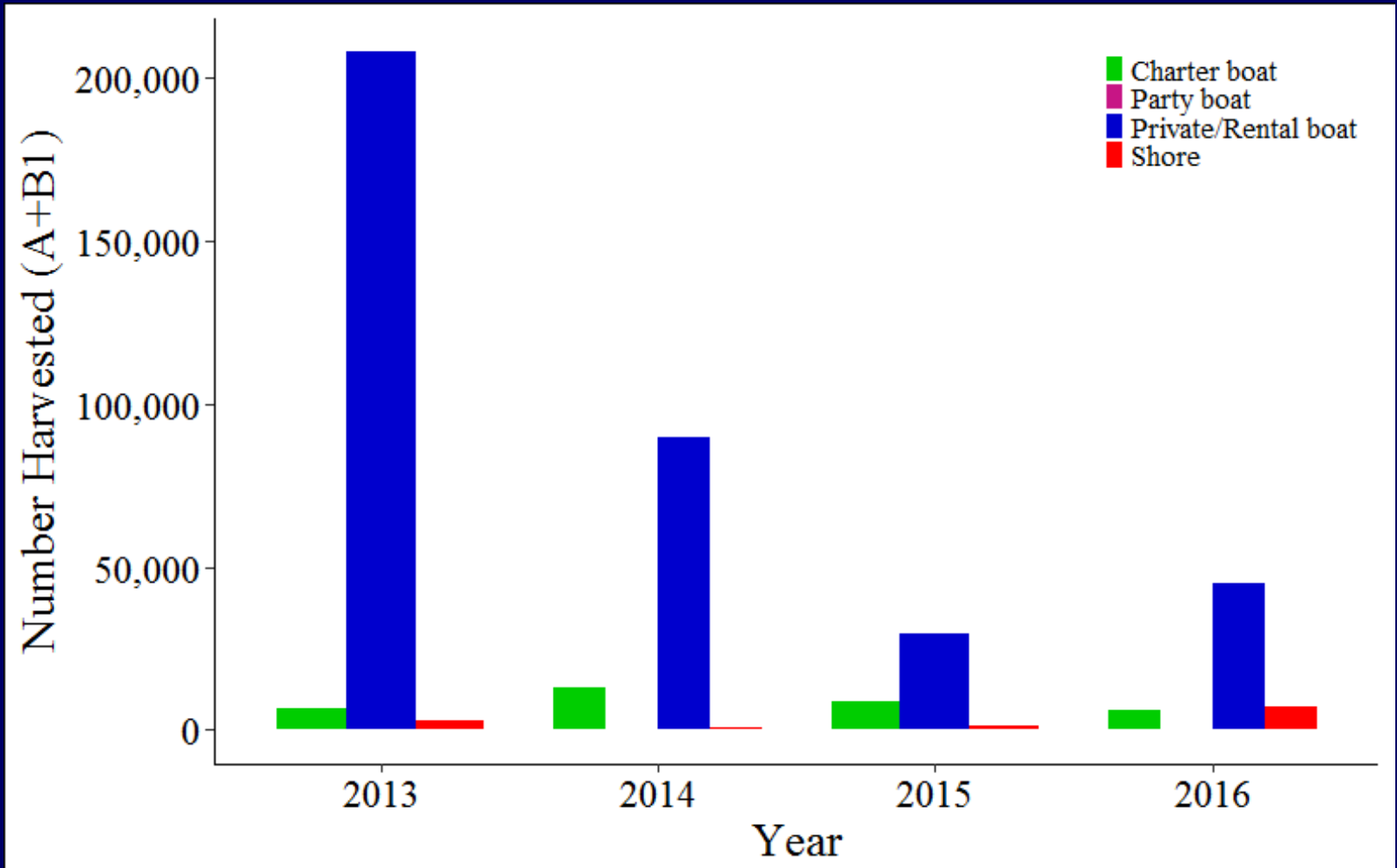


ASMFC Management of Striped Bass

- Addendum IV approved October, 2014
- Addendum IV implemented in 2015
- RI implemented:
 - Rec: 1 fish at 28" min.
 - Comm. GC: 25 % quota reduction – 111,459 lbs
 - Comm. FFT: 25% quota reduction w/ CE – 70,113 lbs
- Addendum IV management options to remain in effect in 2017
- TC review of Addendum IV performance revealed that management measures are working:
 - Anglers releasing more fish
 - F below the target



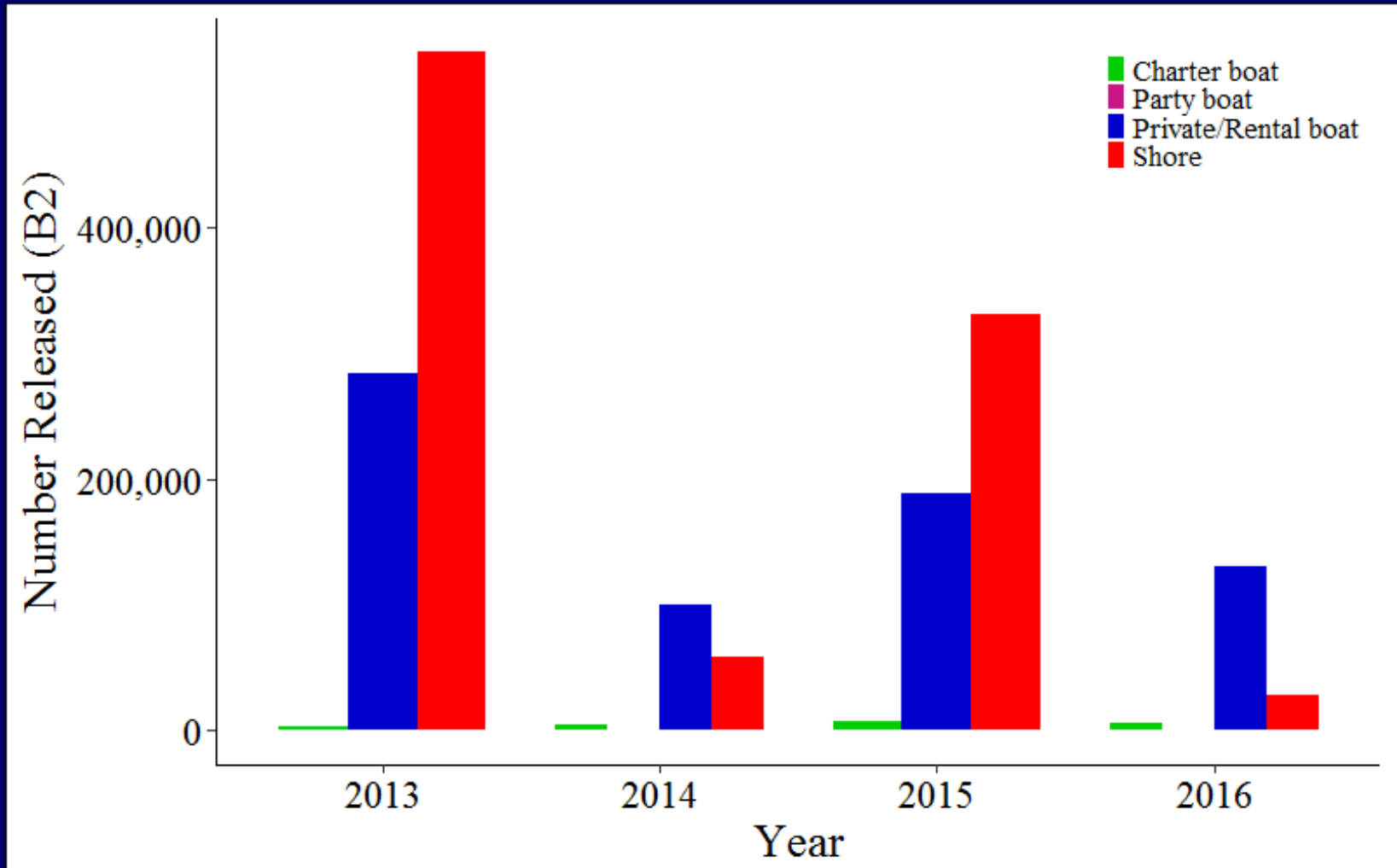
RI Recreational Striped Bass Fishery Performance



Source: 2016 MRIP, 2016 data preliminary and only through wave 5



RI Recreational Striped Bass Fishery Performance



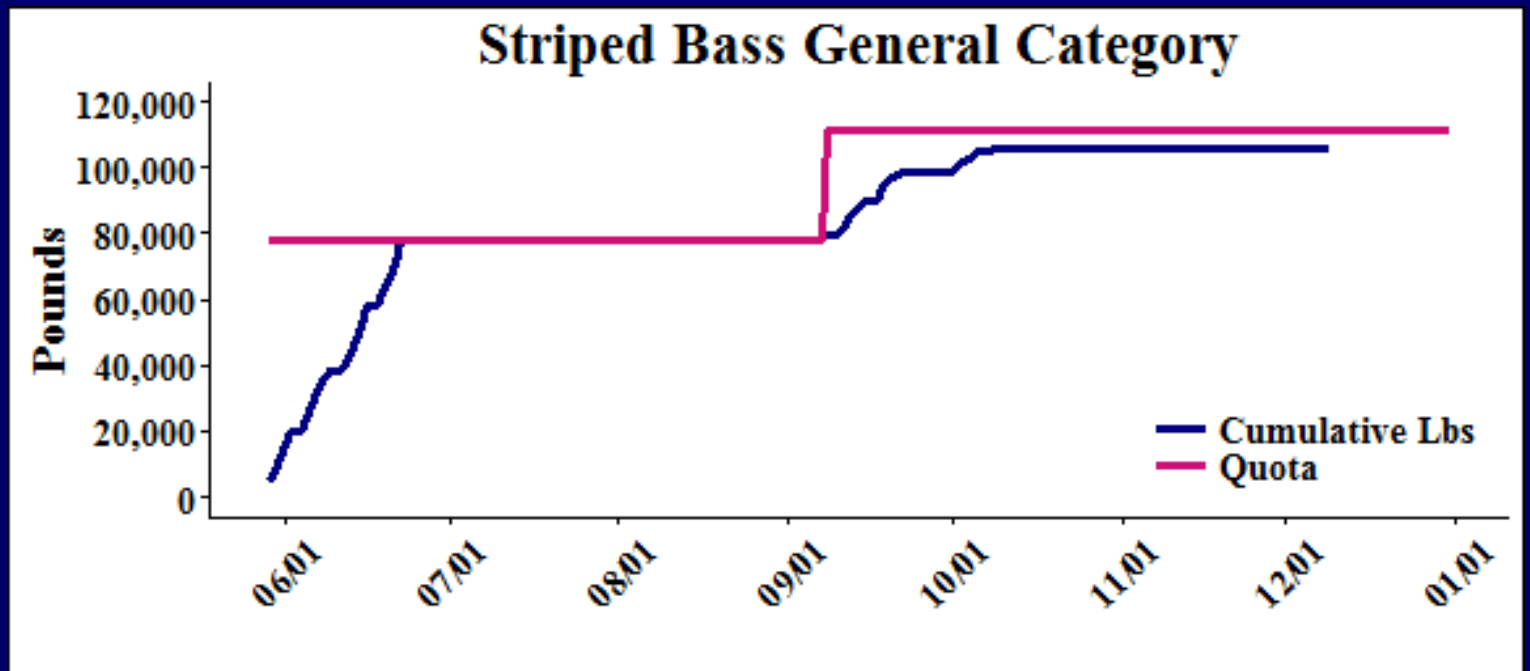
Source: 2016 MRIP, 2016 data preliminary and only through wave 5



2016 RI Commercial General Category Striped Bass Fishery Performance

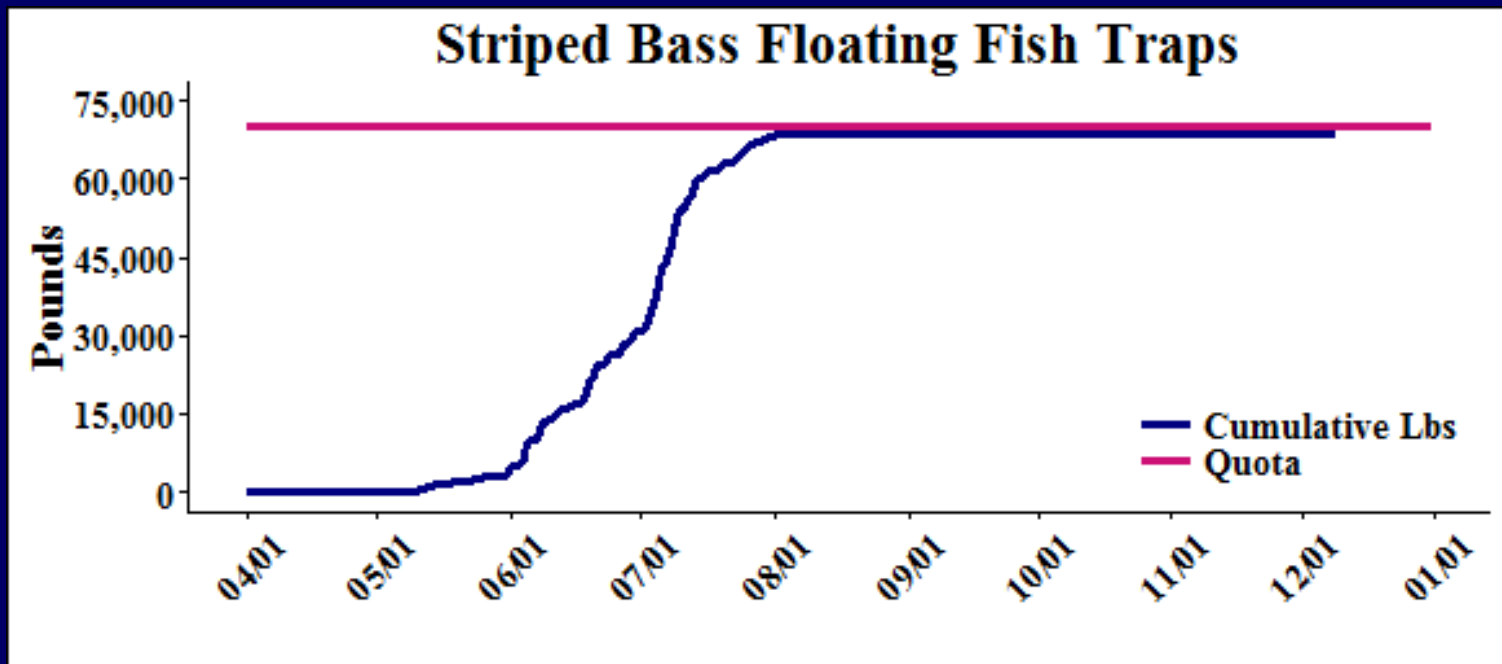
- Quota: 106,369 lbs
- 460 lb underage in 2016

Season	Days Open	Allocation	Landings
5/29 – 6/22	19	74,458 lbs	77,636 lbs
9/8 – 9/22; 9/29 – 10/20	18	28,733 lbs	28,273 lbs



2016 RI Commercial Fishery Performance Floating Fish Trap

- Allocation = 68,300 lbs
- 121 lb overage in 2016



Workshop Item 1a: Recreational Striped Bass

Proposed Management Options:

Option	Min. Size	Possession Limit	Season
<u>Option 1:</u> Status quo	28"	1 fish/day	Open year round



Workshop item 1b: Commercial General Category Striped Bass

- Proposed Management Options:

RI 2017 Commercial Quota = 182,719 lbs
General Category = 111,459
Floating Fish Trap = 69,992

- Option 1: Status quo

Option	Min. Size	Possession Limit	Quota	Season
<u>Option 1:</u> Status quo	34"	5 fish/person/day (max 5 fish/vessel)	70%	5/29 – 8/31 Closed Fri & Sat
			30%	9/8 – 12/31 Closed Fri & Sat



Workshop Item 1c: Commercial Floating Fish Trap Striped bass

Proposed Management Options:

Option	Min. Size	Possession Limit	Season
<u>Option 1:</u> Status quo	26"	Unlimited	4/1 – 12/31



Commercial Menhaden

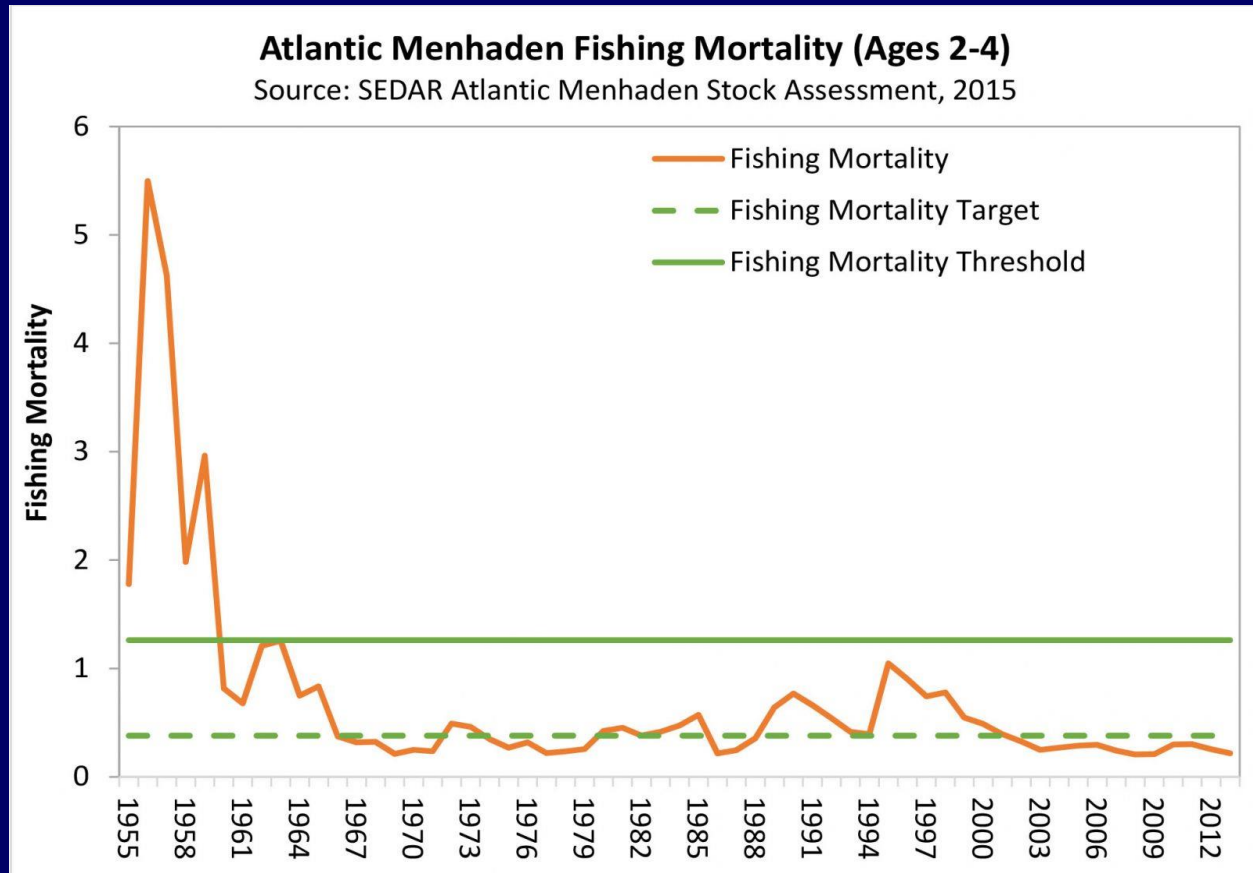
- Summary of Stock Status
- ASMFC Management of Menhaden
- 2016 Rhode Island Commercial Fishery Performance
- Recommendations for the 2017 Menhaden Fishery



Menhaden Stock Status

- Benchmark in 2015: ASMFC/SEDAR
- The population is not overfished and overfishing is not occurring relative to the new maximum spawning potential (MSP) reference points (ASMFC, 2015).

- Fishing mortality was estimated to be 0.22 in 2013, a level below the fishing mortality threshold ($F_{15\%MSP}=1.26$) and the fishing mortality target ($F_{30\%MSP}=0.38$).

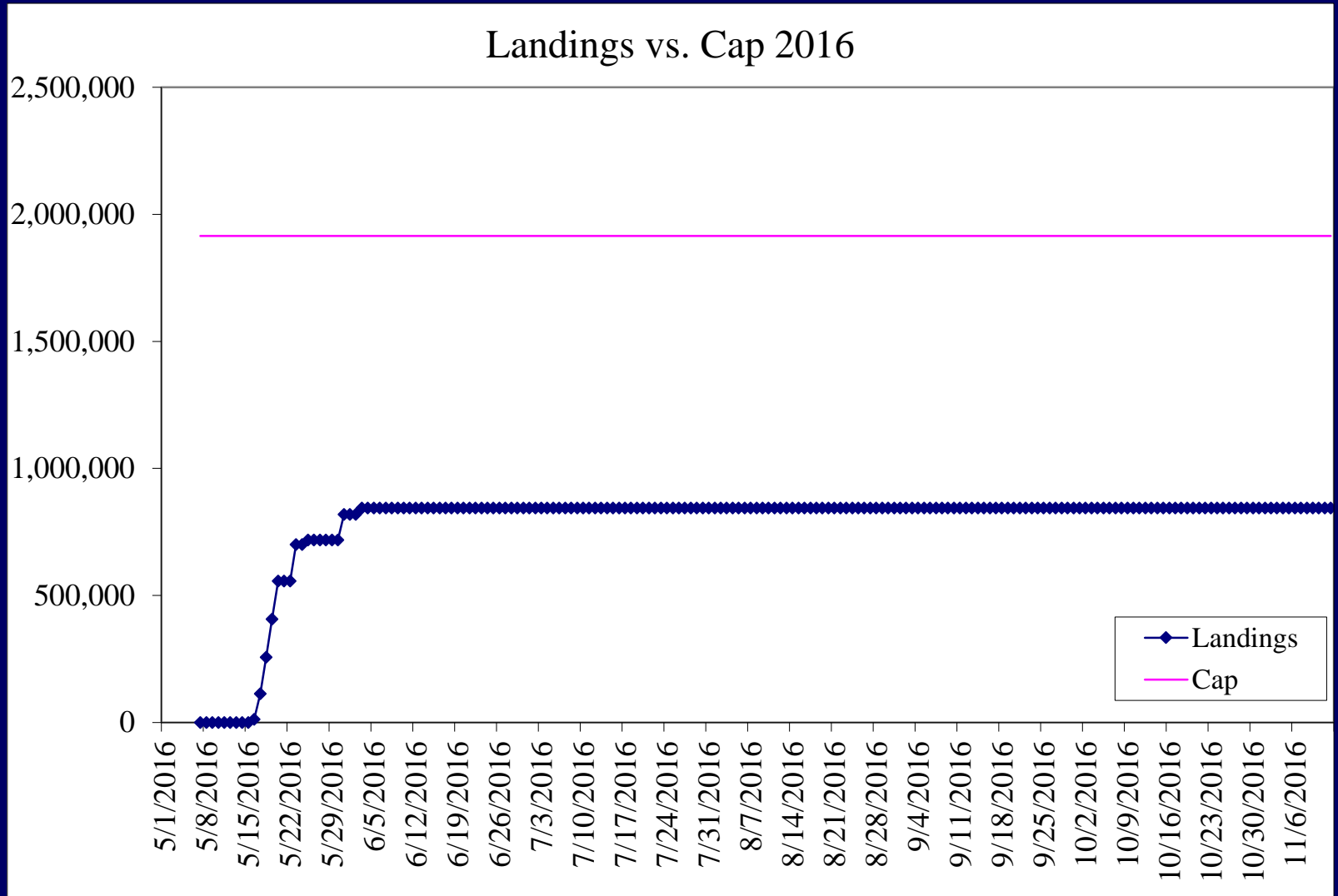


ASMFC Management of Menhaden

- Amendment 2 approved in 2012 established:
 - Total allowable catch (TAC).
 - State-by-state quota allocations.
 - Episodic event set aside quota (1% of TAC).
- TAC increased 10% for 2015 and 2016 in response to benchmark assessment findings. For 2017, TAC increased 6.45% from 2016.
- ASMFC is funding a socioeconomic analysis of the Atlantic menhaden commercial bait and reduction fishery.
- Board currently moving forward with development of:
 - Ecological based reference points.
 - Amendment 3.
 - PID for Draft Amendment 3 approved for public comment by Board in 2016, public comment period ended on 1/4/17.
 - Board will consider public comment at ASMFC Winter Meeting.



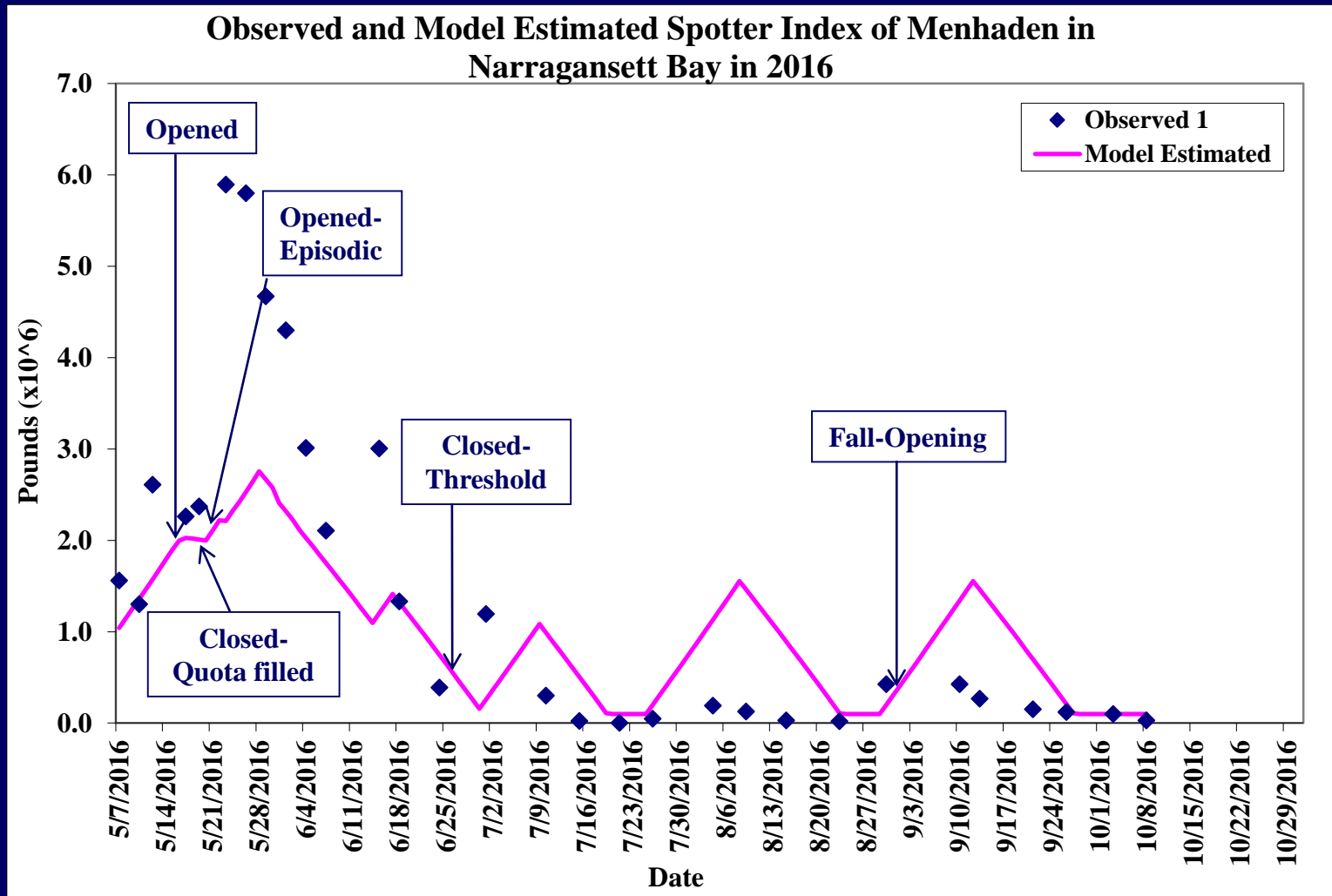
2016 RI Landings*



* Note: Actual landing amounts transformed to protect confidentiality



2016 RI Spotter Pilot Observations



- Additional Actions in 2016:
 - Episodic Event ended 11/1/16
 - Transfer of 100k lbs from MA allowed brief re-opening on 11/10/16
 - Closure on 12/5/16 and transfer back to MA unused quota



Commercial Menhaden

2016 Landings by sector

Quota	Total Landings	Quota Remaining	Bycatch Landed (< 6,000 lbs)	Episodic Event Landings
73,457	109,443	-35,986	24,960	168,345

- 2016 Overage covered by a transfer from MA



Commercial Menhaden

- Proposed Management Options:

RI 2017 Commercial Quota = 78,195 lbs

- Option 1: Status quo

- Option 2: Change bycatch limit as defined in ASMFC Addendum I to Amendment 2

16.1.2 (B) Once the quota has been reached, the fishery will close for directed fisheries, including but not limited to purse seine operations, and a ~~the landing- **bycatch** limit for non-directed fisheries will be 6,000 pounds per vessel per day~~ will be in effect. The bycatch limit will be:

(1) 6,000 pounds per vessel per day for non-directed fisheries.

(2) If two commercially licensed individuals are harvesting from the same vessel, 2 daily possession limits (12,000 pounds per vessel per day) may be harvested from one of the following gear types: pound nets, fish traps, anchored/staked gill nets, and fyke nets.



Tautog

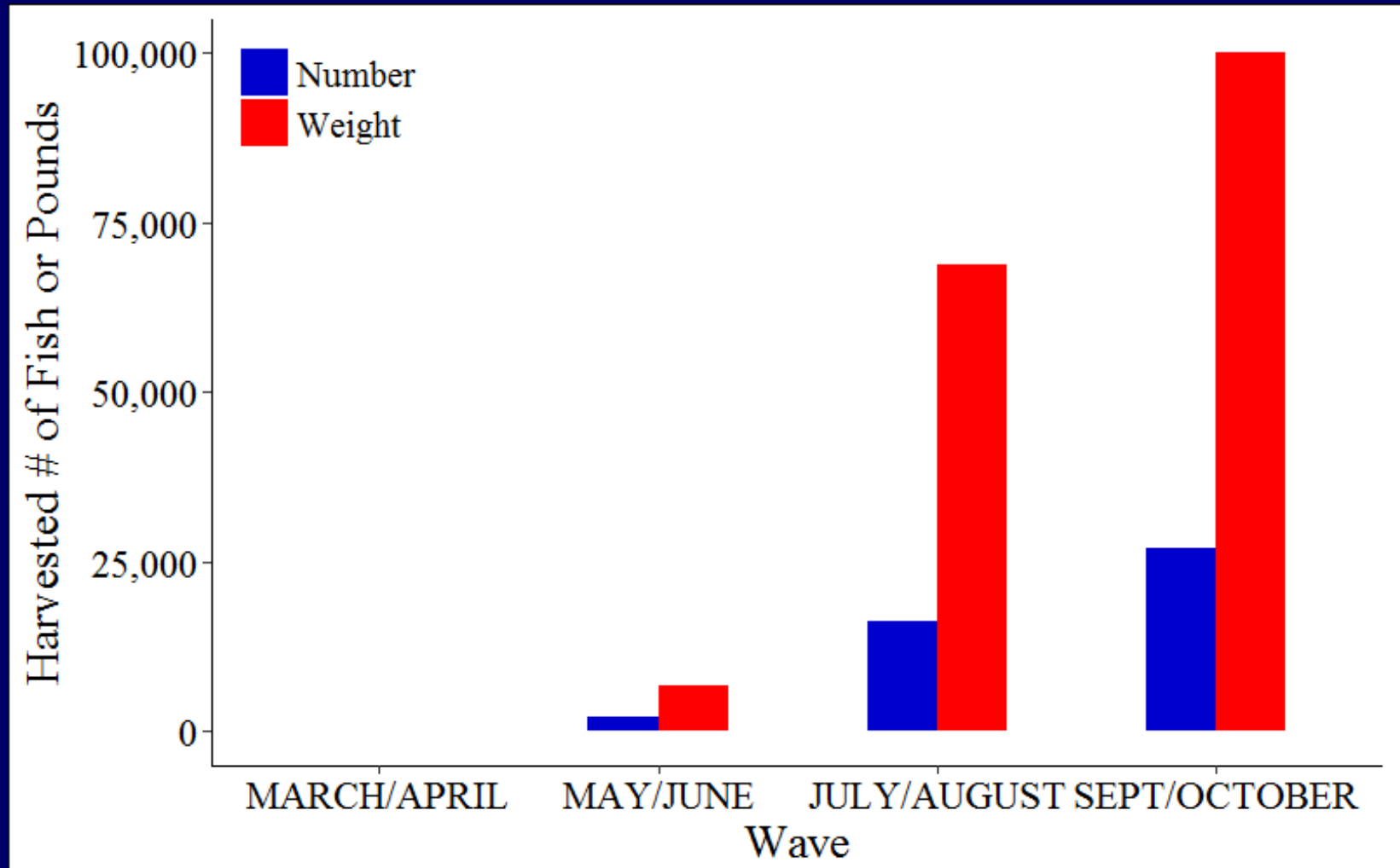


ASMFC Management of Tautog and Stock Status

- Benchmark assessment completed in 2014 with an update in 2016.
- A regional approach presented in the update was accepted by the board, RI is in a region with Massachusetts (MARI)
- Reference Points not approved at this time
- Assumption is that stock status is poor based on accepted update assessment
- TC will convene in January to discuss catch reduction and Board will review again in February



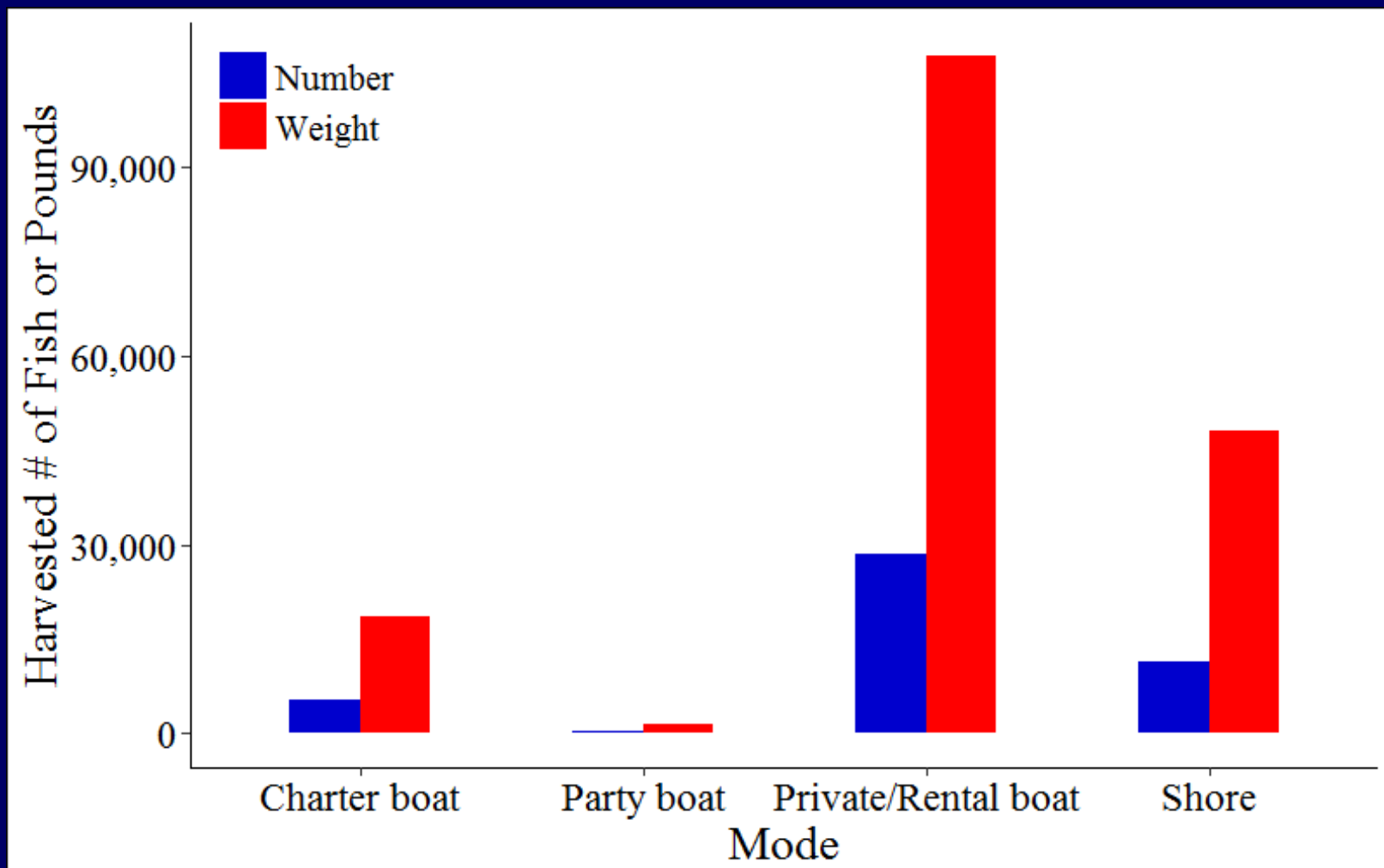
2016 RI Recreational Tautog Fishery Performance



- **Note:**
Data only through wave 5



2016 RI Recreational Tautog Fishery Performance



- **Note:**
Data only through wave 5



Workshop Item 3a(i): Recreational Tautog

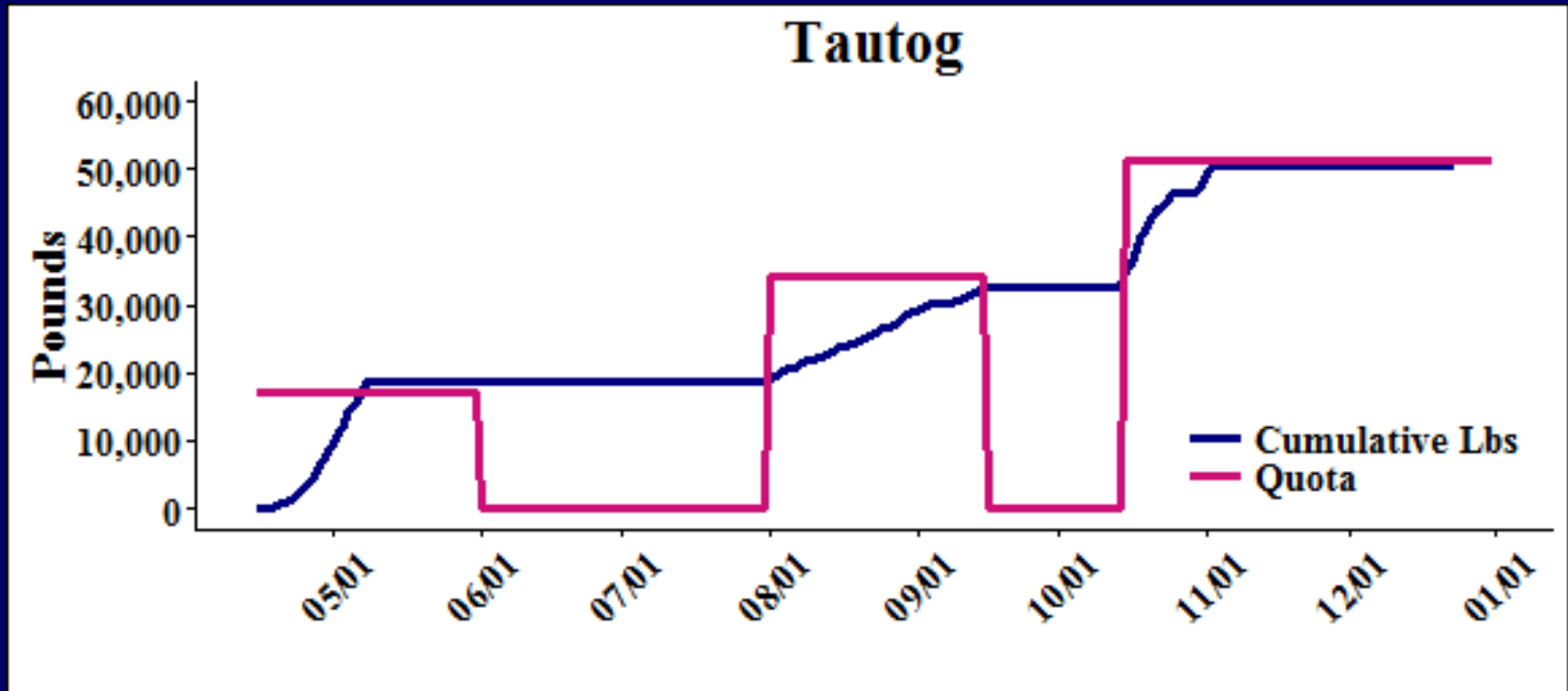
Proposed Management Options:

Option	Min. Size	Rec. and P/C Season/Poss. Limit
<u>Option 1:</u> Status quo	16"	<u>April 15 – May 31:</u> 3 fish <u>June 1 – July 31:</u> Closed <u>Aug. 1 – 3rd Sat. in Oct:</u> 3 fish <u>3rd Sat. in Oct. – Dec. 15:</u> 6 fish • max. 10 fish/vessel (n/a for P/C)



Commercial Tautog

2016 RI Fishery Performance



- Total underage of 662 lbs.



Workshop Item 3a(ii): Commercial Tautog

Proposed Management Options:

	Min. Size	Season/Possession Limit
<u>Option 1:</u> Status quo	16"	<u>April 15 – May 31:</u> 10 fish/vsl/day <u>June 1 – July 31:</u> Closed <u>Aug. 1 – Sept. 15:</u> 10 fish/vsl/day <u>Oct. 15 – Dec. 31:</u> 10 fish/vsl/day

- Management restrictions not required in 2017
- No overage in 2016:
 - Spring: 17,116 lbs
 - Summer: 17,116 lbs
 - Fall: 17,116 lbs



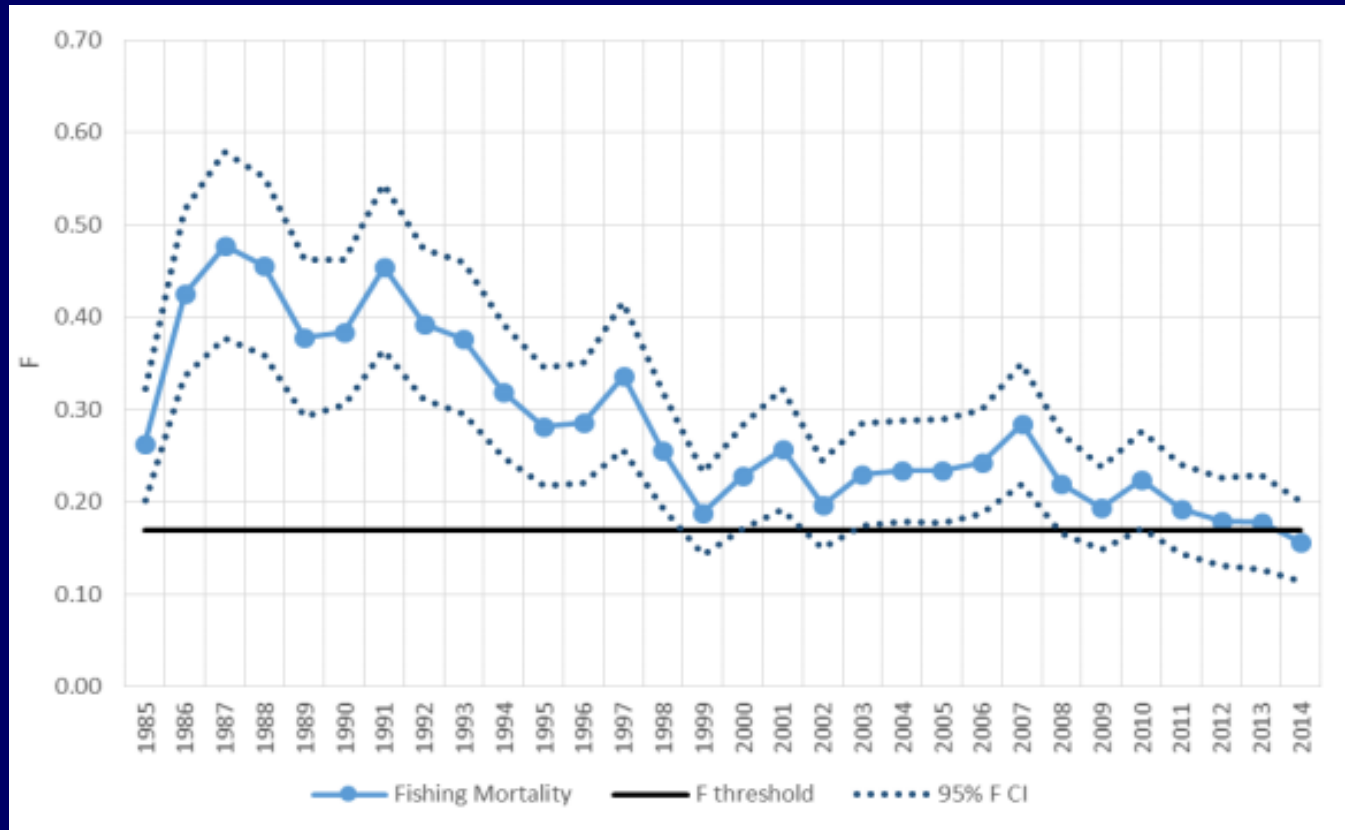
Workshop Item 3b: Commercial Management of Bluefish

- Summary of Stock Status
- 2016 Rhode Island Commercial Fishery Performance
- Recommendations for the 2017 Commercial Bluefish Fishery



Workshop Item 3b: Commercial Bluefish

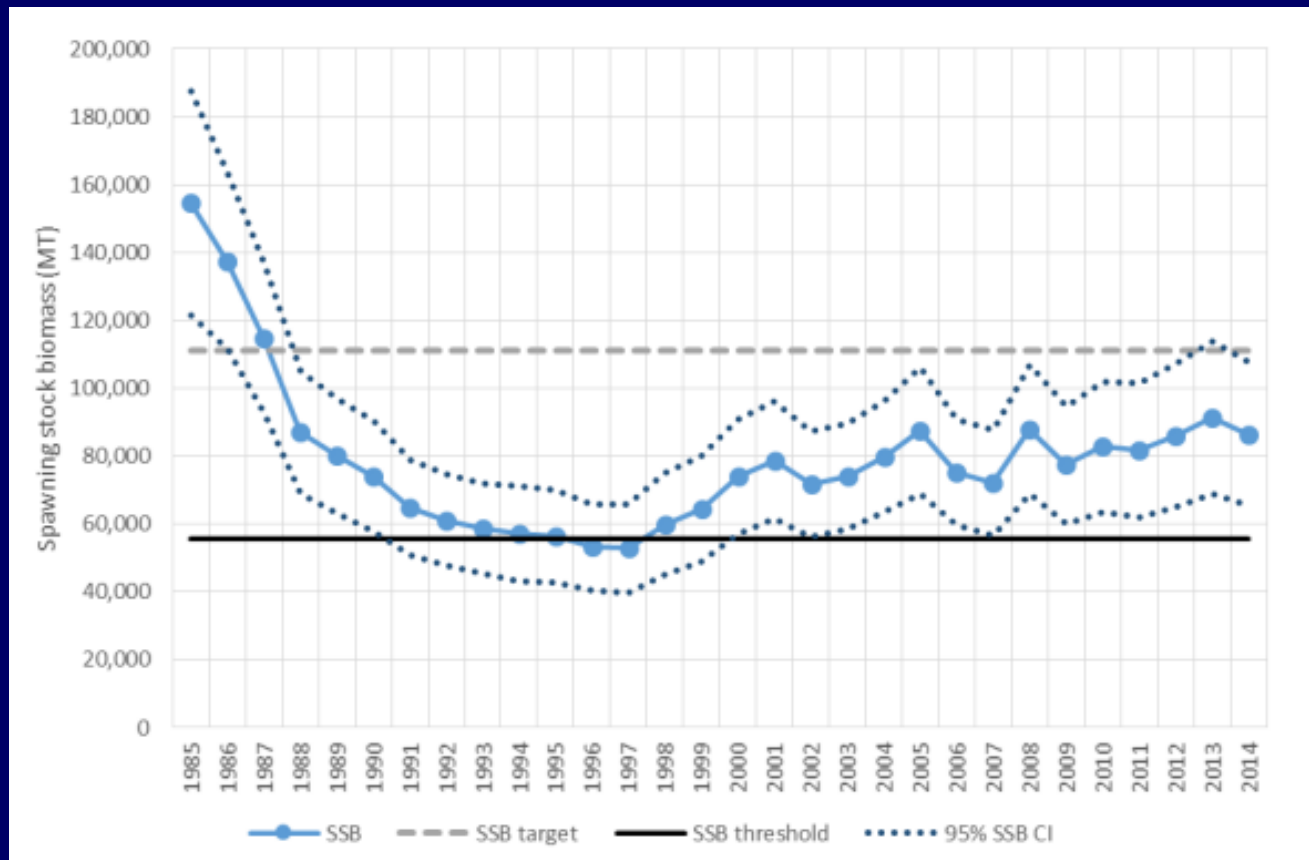
- Stock Status:
 - Benchmark in 2015.
 - The bluefish stock is not overfished, and overfishing is not occurring relative to biological reference points.
 - Fishing mortality was estimated to be 0.157 in 2014, below the threshold F reference point = 0.19.



Workshop Item 3b: Commercial Bluefish

- Stock Status cont'd:

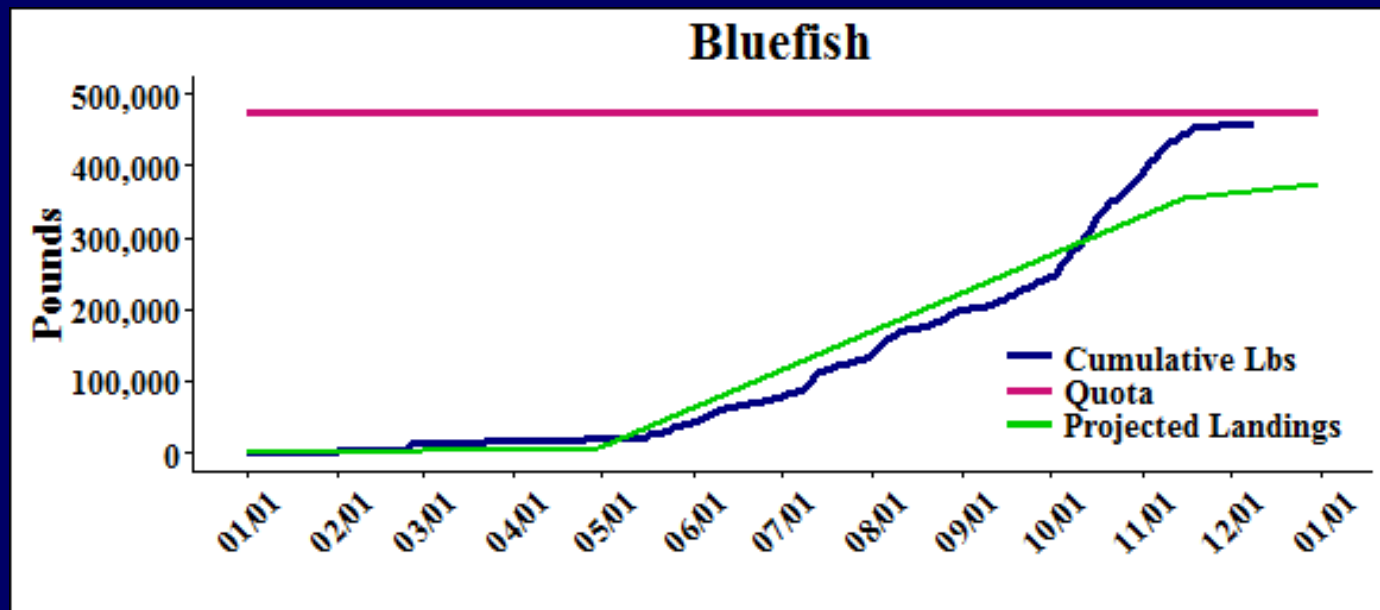
- Biomass estimated to be 207.96 m lbs in 2014, above the Biomass threshold = 162.1 m lbs but below the Biomass target of 324.19 m lbs.
- The 2014 year class is currently estimated to be about 29.6 million fish, above the median.



Workshop Item 3b: Commercial Bluefish

- To date, no commercial fishery closures, however transfers needed from other states and multiple possession limit changes.

Period	Initial Projected Poundage	Transfers	2016 Landings	Possession Limit
1/1 – 4/30	6,942		19,066	500/wk; 250/wk (2/28)
5/1 – 11/15	308,577	100,000	425,618	4,000/wk; 6,000/wk (6/19) 12,000/wk (7/10)
11/16 – 12/31	17,132	32,000	14,880	500/wk; 250/wk (11/27)
TOTAL	332,651	132,000	459,564	



Workshop Item 3b: Commercial Bluefish

- 2017 Commercial Quota: 413,311 lbs
 - Increase of ~ 24%

- Proposed Management Options:

- Option 1: Status quo

Min. size	Sub-period	Poss. Limit	2017 Projected Poundage
18"	1/1 – 4/30	500 lbs/vsl/wk	12,194
	5/1 – 11/15	4,000 lbs/vsl/wk	343,784
	11/16 – 12/31	500 lbs/vsl/wk	17,462

- Option 2: Change Fall start date to 2nd Sunday in November and raise summer limit

Min. size	Sub-period	Poss. Limit	2017 Projected Poundage
18"	1/1 – 4/30	500 lbs/vsl/wk	12,194
	5/1 – 11/ 15 <u>11</u>	4,000 <u>6,000</u> lbs/vsl/wk	376,493
	11/ 16 <u>12</u> – 12/31	500 lbs/vsl/wk	21,867



End of Slides!

