



Proactive by Design

GEOTECHNICAL
ENVIRONMENTAL
ECOLOGICAL
WATER
CONSTRUCTION
MANAGEMENT



MEMORANDUM

To: Joseph Martella, RIDEM

From: Dave Rusczyk, GZA

CC: Kenneth Lento, National Grid

Date: January 29, 2021

Re: Site Response Action Report
Period January 10, 2021 through January 23, 2021
Former Tidewater Facility
Pawtucket, Rhode Island
RIDEM Case No. 95-022 / Site Remediation File No. SR-26-0934

SITE ACTIVITIES PERFORMED

- Charter Contracting Company, LLC (Charter) continued activities related to implementation of the remedial construction work. These activities included:
 - Continued removal of the existing timber piles within the river to facilitate the installation of the new containment wall.
 - Continued probing activities along the alignment of the new containment wall to identify potential obstructions that require removal.
 - Initiation of the removal of identified obstructions along the alignment of the containment wall.
 - Abandonment of certain existing monitoring wells.
- GZA continued to perform a monitoring program to evaluate turbidity levels within the Seekonk River adjacent to the Site. These readings were obtained inside and outside the turbidity curtain.
- Perimeter air monitoring was performed during the period covered by this report with 11 air monitoring stations (4 solar powered units and 7 electrically powered units). These stations measured and recorded fugitive dust and total volatile organic compounds concentrations continuously 24 hours per day/7 days per week. No exceedances of the perimeter action levels were noted with the exception of the total volatile organic compound (TVOC) concentrations measured at Station No. 1 around 5:30 pm on January 10, 2021. This station was located upwind of the Site at the time of the elevated TVOC reading and no activities were being performed at the Site. The elevated TVOC reading at this station was attributed to an upwind, off-Site source. We also note benzene concentrations were below the sustained perimeter action level of 0.35 parts per million volume (ppmv) during the period covered by this report. The air monitoring results were posted to the project website and the bulletin boards at the ends of Tidewater Street and Bowles Court and are also attached to this report.
- GZA collected ambient air samples from upwind and downwind locations on January 14, 2021 and January 21, 2021 for laboratory analysis for benzene, toluene, ethylbenzene, xylenes, and



naphthalene. The analytical results from these samples indicated there were no exceedances of the project action levels. The analytical results were posted to the project website and the bulletin boards at the ends of Tidewater Street and Bowles Court and are also attached to this report.

ANTICIPATED SITE ACTIVITIES TO BE PERFORMED WITHIN NEXT 2 WEEKS

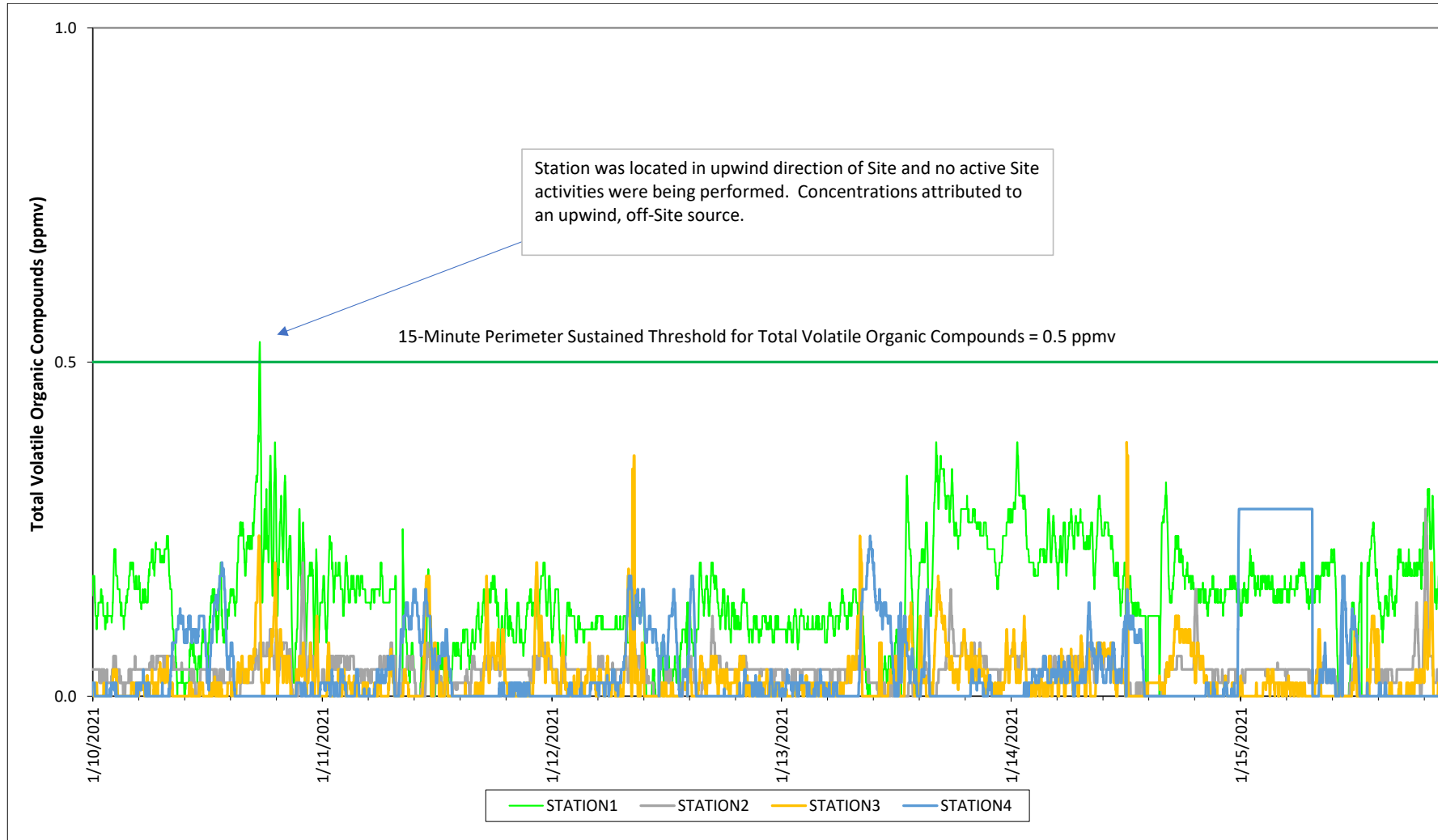
- Completion of the removal of existing timber piles and obstructions within the alignment of the new containment wall.
- Delivery of the steel sheetpiles for the new containment wall.
- Initiation of the installation of steel sheetpiles for the new containment wall.
- Initiation of upland demolition activities.

Please contact Kenneth Lento at 781-907-3655 if you have any questions or comments.

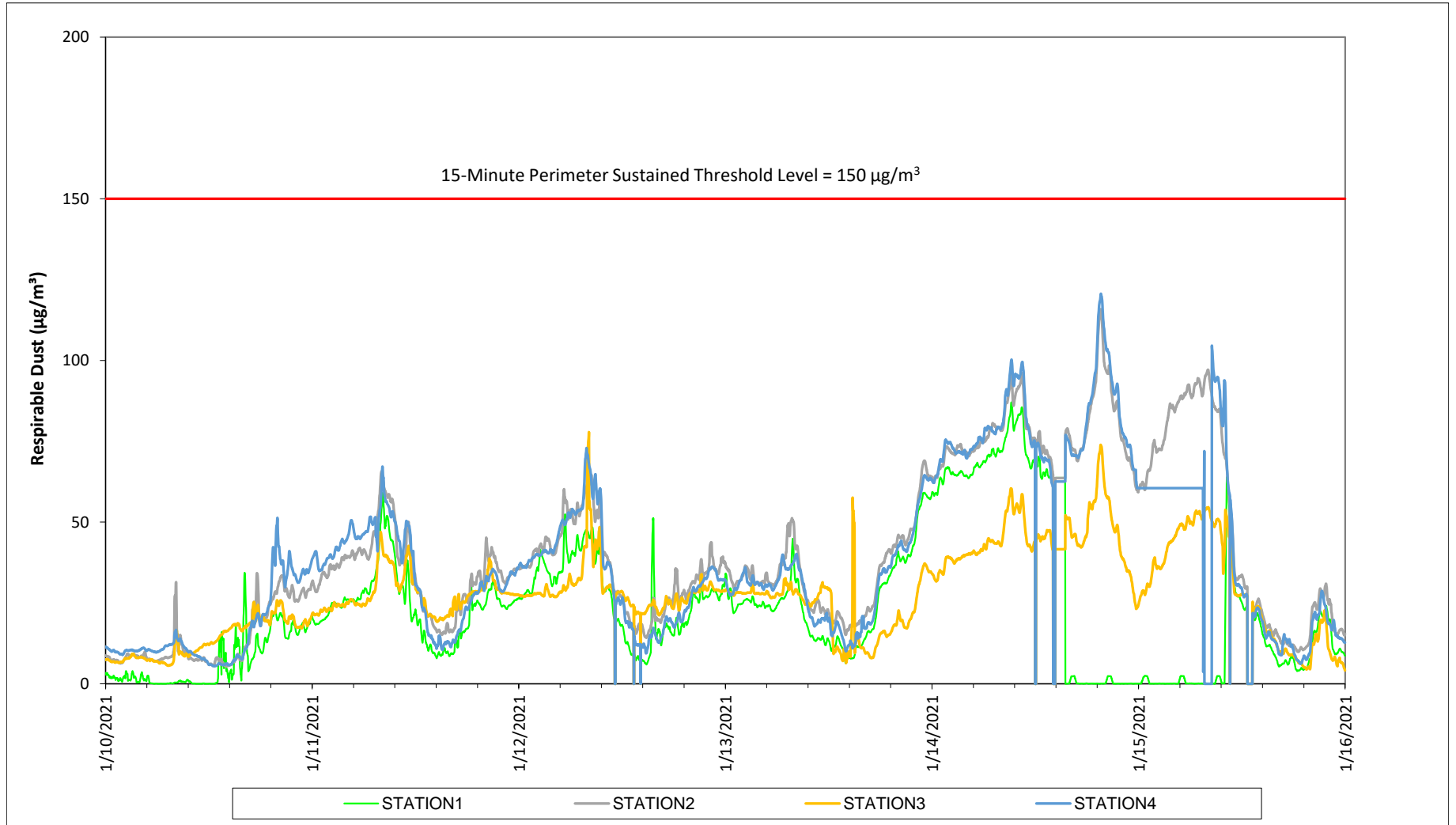
\\gzaprovidence\Jobs\ENV\43654.60\Correspondence\RIDEM Updates\2021-01-10 to 2021-01-23\Tidewater Bimonthly Update for January 10 to Jan 23.docx

Prepared by National Grid for the Businesses and Residents Located Near the Former
Tidewater Facility

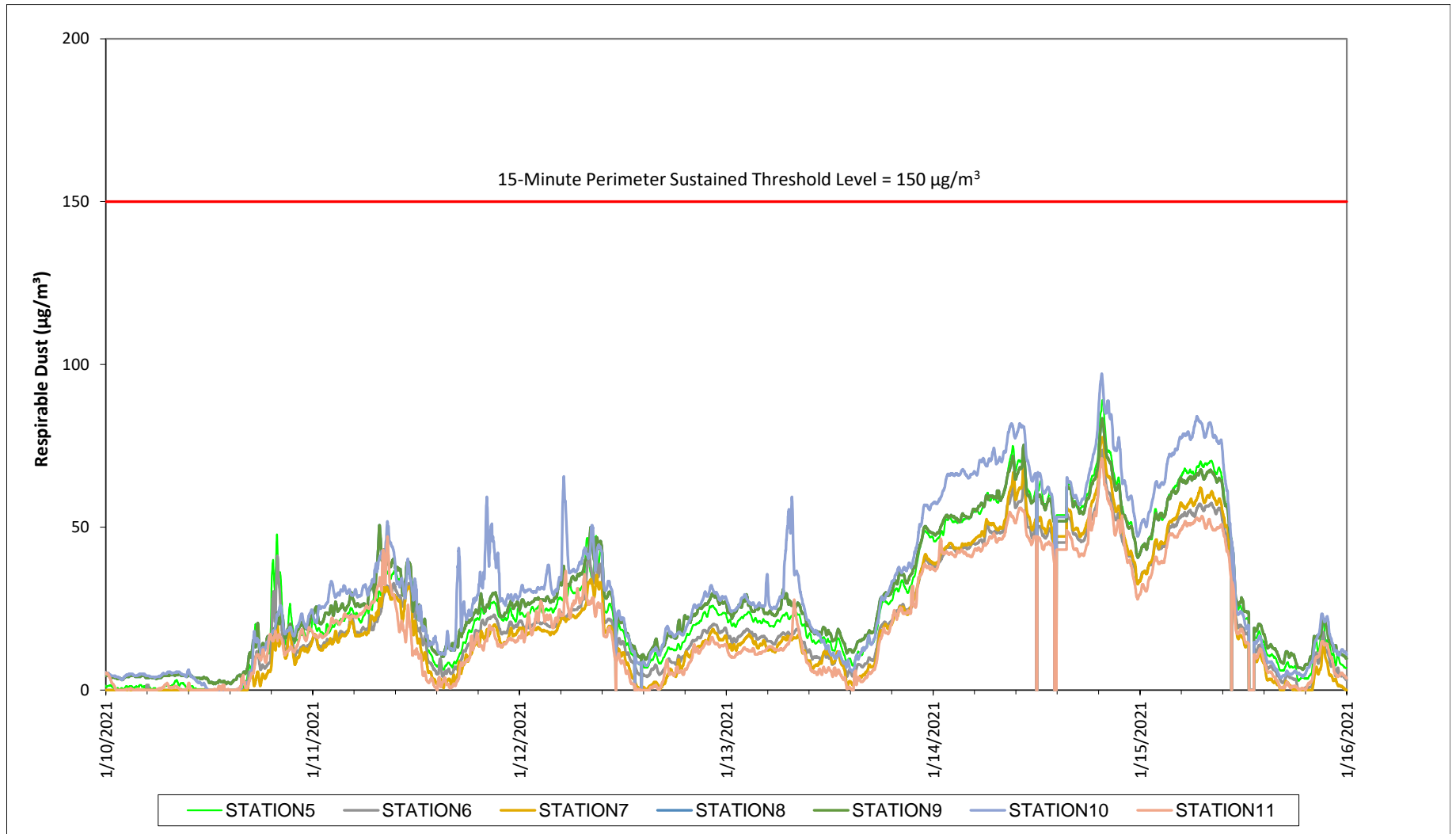
Air Quality Monitoring - Total Volatile Organic Compounds



Prepared By National Grid for the Businesses and Residents Located Near the Tidewater Facility
Air Quality Monitoring - Respirable Dust

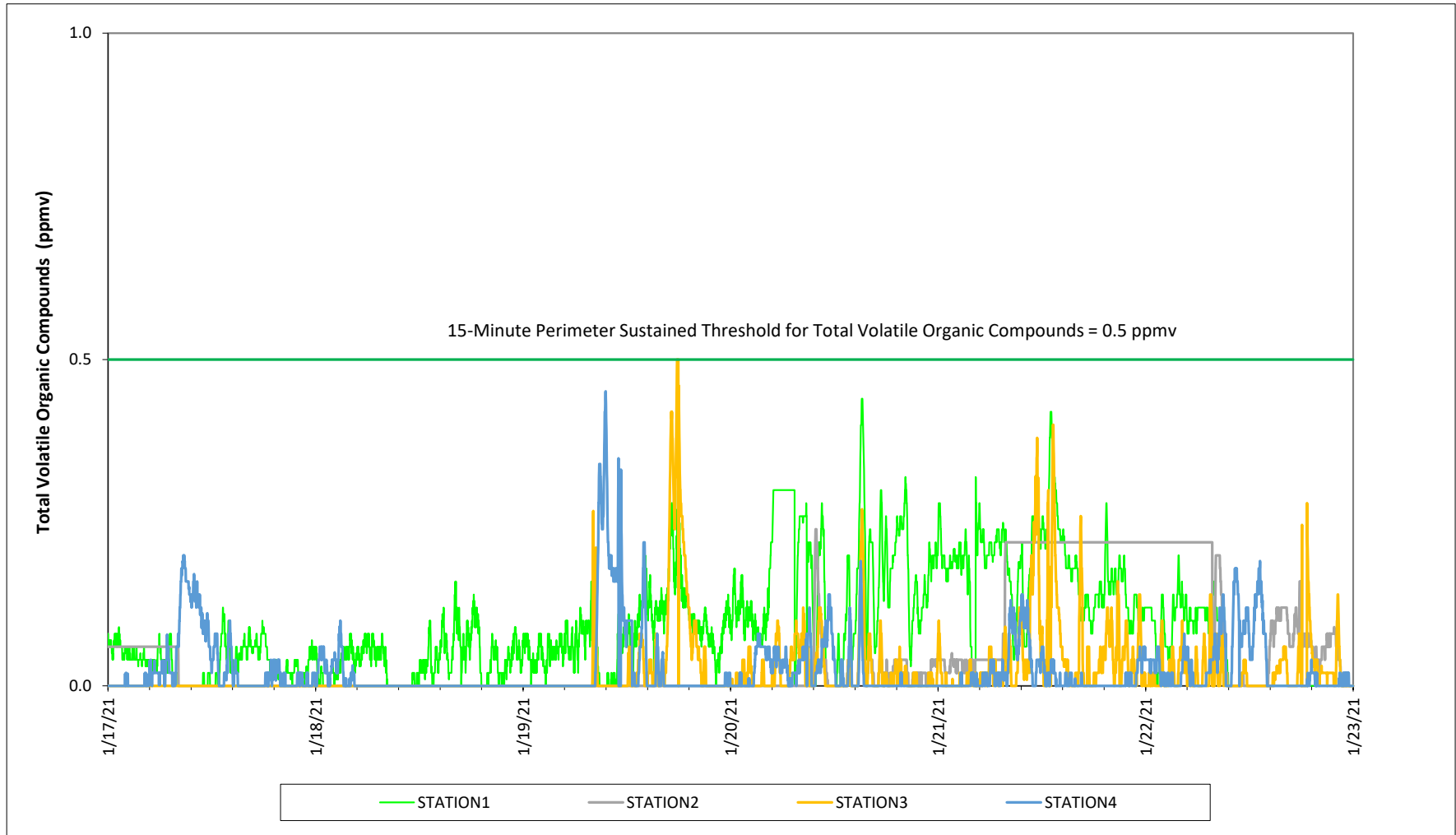


Prepared by National Grid for the Businesses and Residents Located Near the Tidewater Facility
Air Quality Monitoring - Respirable Dust



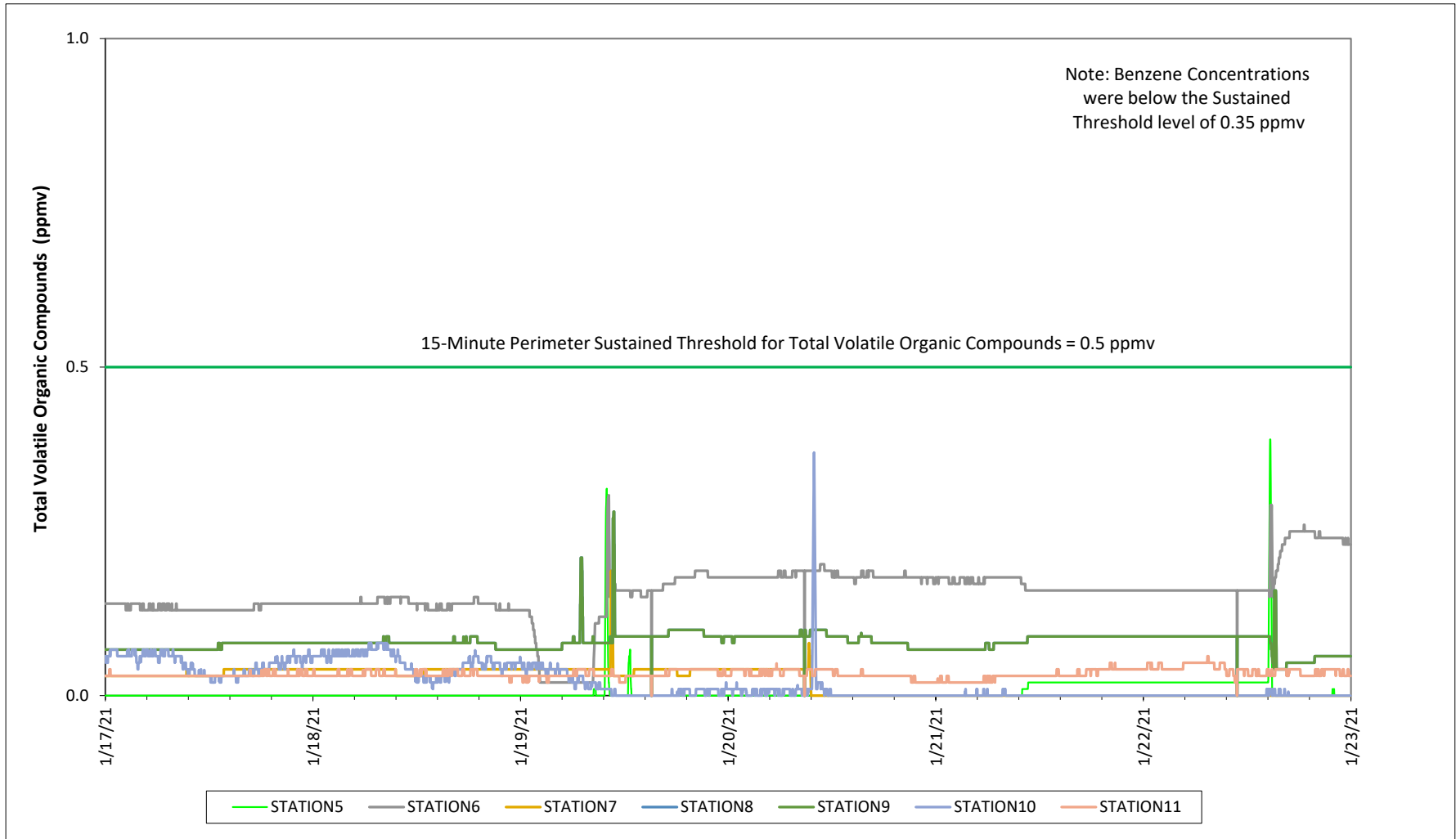
Prepared by National Grid for the Businesses and Residents Located Near the Former
Tidewater Facility

Air Quality Monitoring - Total Volatile Organic Compounds



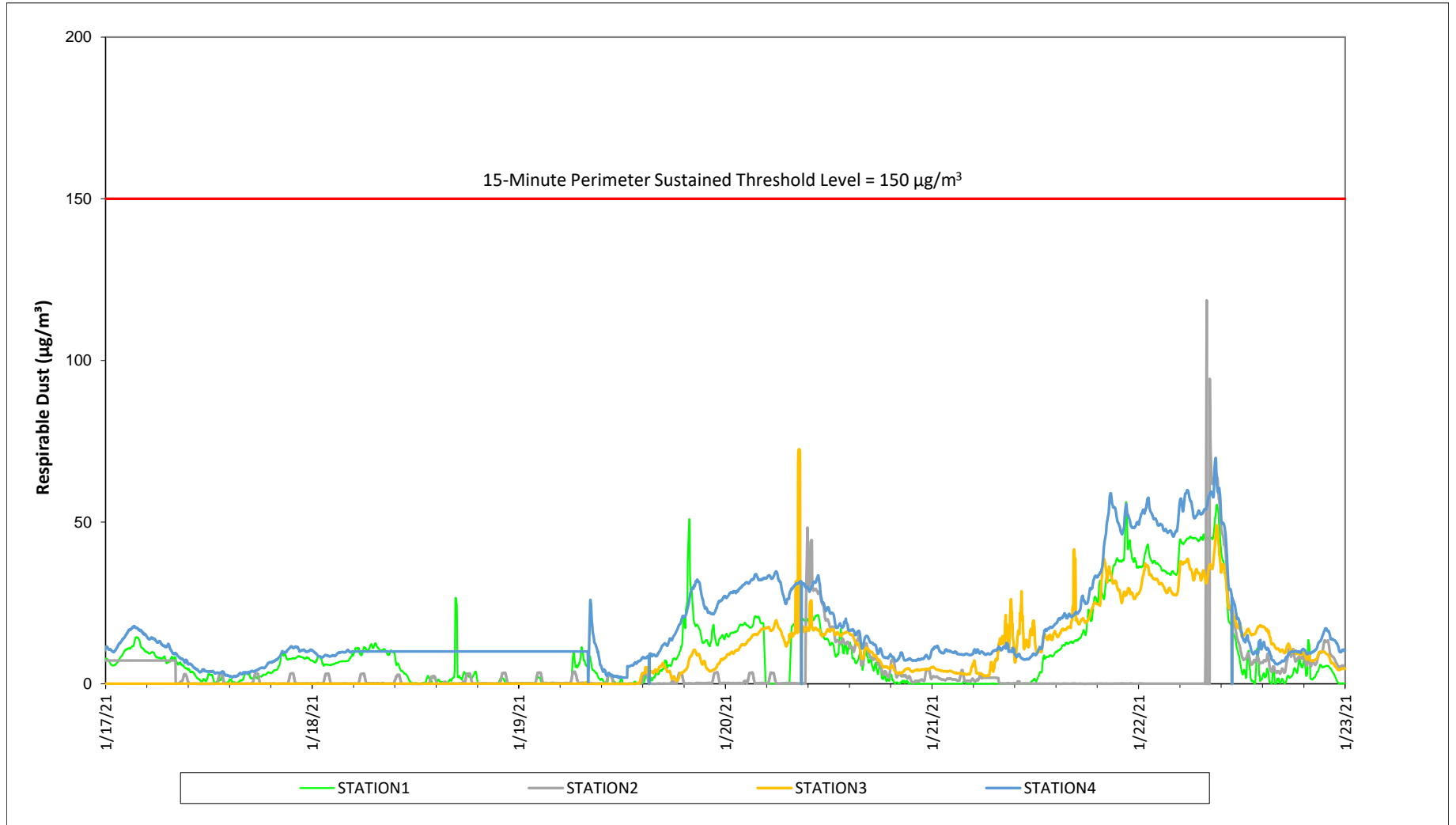
Prepared by National Grid for the Businesses and Residents Located Near the Former
Tidewater Facility

Air Quality Monitoring - Total Volatile Organic Compounds



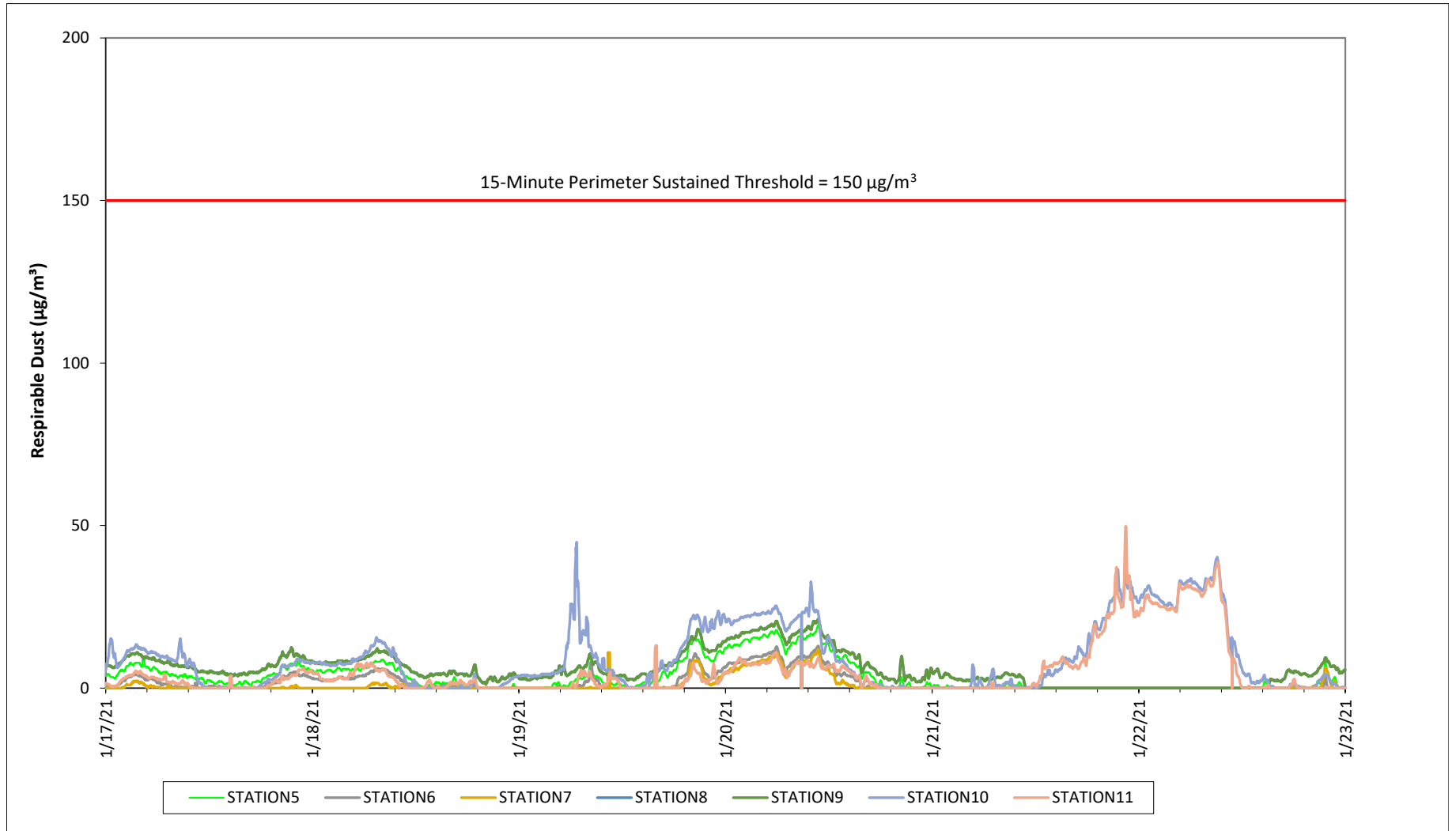
Prepared by National Grid for the Businesses and Residents Located Near the Tidewater Facility

Air Quality Monitoring - Respirable Dust

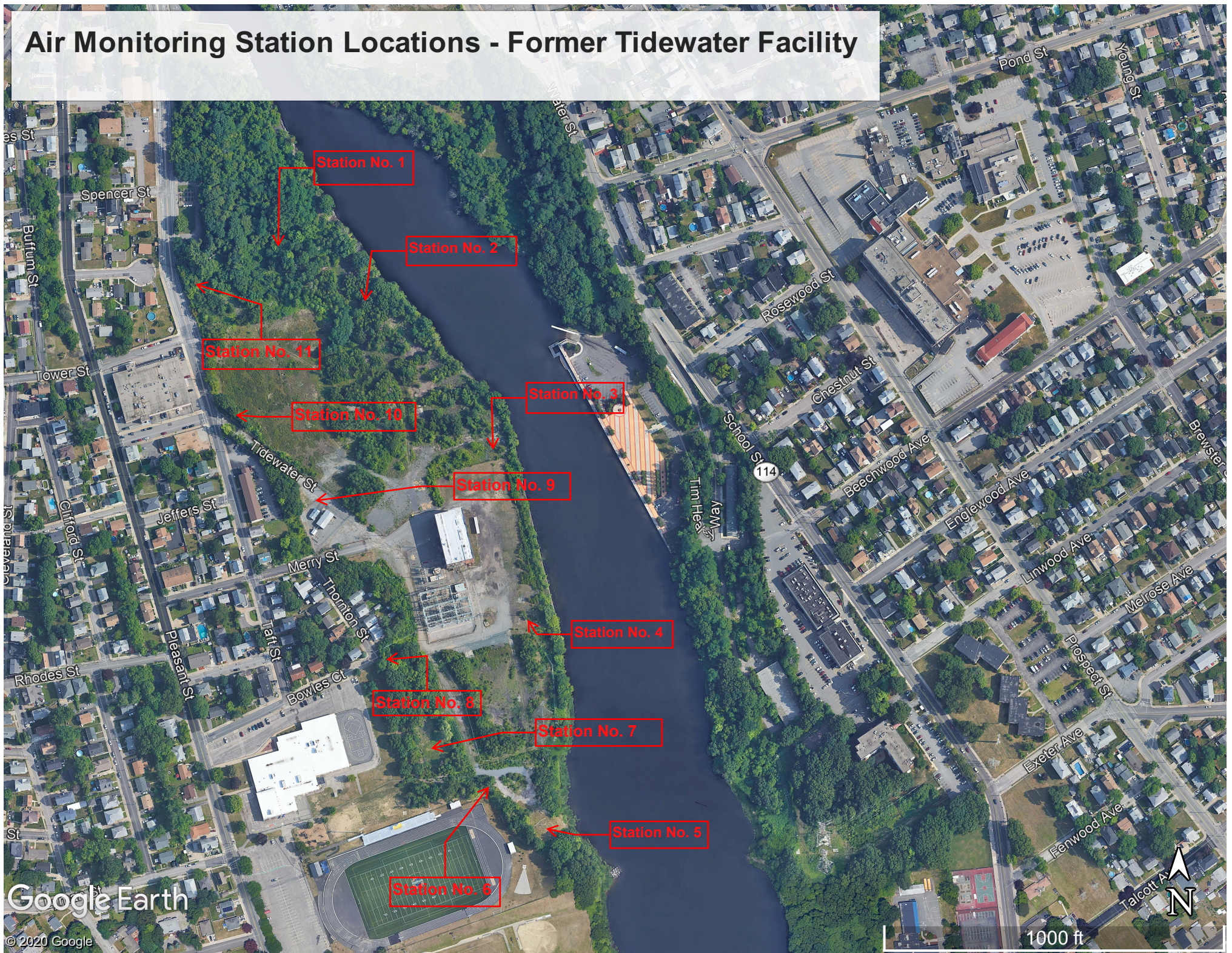


Prepared by National Grid for the Businesses and Residents Located Near the Tidewater Facility

Air Quality Monitoring - Respirable Dust



Air Monitoring Station Locations - Former Tidewater Facility



**Prepared by National Grid for the Businesses and Residents Located Near the Former Tidewater Facility
Weekly Ambient Air Sampling Results**

Sample Date	Compounds				
	Benzene	Toluene	Ethylbenzene	Total Xylenes	Naphthalene
	(ppb v/v)				
12-3-20 UP STREAM	0.13	0.22	0.079	0.054	< 0.5
12-3-20 DOWN STREAM	0.13	0.2	0.073	0.05	< 0.5
12-10-20 UP STREAM	0.25	0.23	< 0.2	0.14	< 0.5
12-10-20 DOWN STREAM	0.17	0.2	< 0.2	< 0.7	< 0.5
12-16-20 UP STREAM	0.19	0.2	0.083	0.12	< 0.5
12-16-20 DOWN STREAM	0.13	0.16	0.078	0.094	< 0.5
12-23-20 UP STREAM	0.15	0.16	< 0.2	0.1	< 0.5
12-23-20 DOWN STREAM	0.13	0.11	< 0.2	< 0.7	< 0.5
12-30-20 UP STREAM	0.21	0.22	< 0.2	< 0.7	< 0.5
12-30-20 DOWN STREAM	0.089	< 0.2	< 0.2	< 0.7	< 0.5
1/7/21 UP STREAM	0.29	1.5	0.22	2.1	< 0.5
1/7/21 DOWN STREAM	0.16	0.27	0.086	0.42	< 0.5
1/14/21 UP STREAM	0.43	0.44	< 0.2	0.23	< 0.5
1/14/21 DOWN STREAM	0.4	0.52	0.076	0.3	< 0.5
1-21-21 UPSTREAM	0.15	0.28	0.1	< 0.7	0.24
1-21-21 DOWNSTREAM	0.18	0.23	0.11	0.1	< 0.5
Project Action Levels	6.2	80	230	23	20

Notes:

1. The Project Action Levels are consistent with the Air Quality Monitoring Plan developed for the Site.
2. Air samples are collected in stainless steel summa canisters over an approximately 8-hour period.
3. Air samples are analyzed by EuroFins TestAmerica of Burlington, VT.
4. Results and action levels are listed in parts per billion volume/volume (ppb v/v).