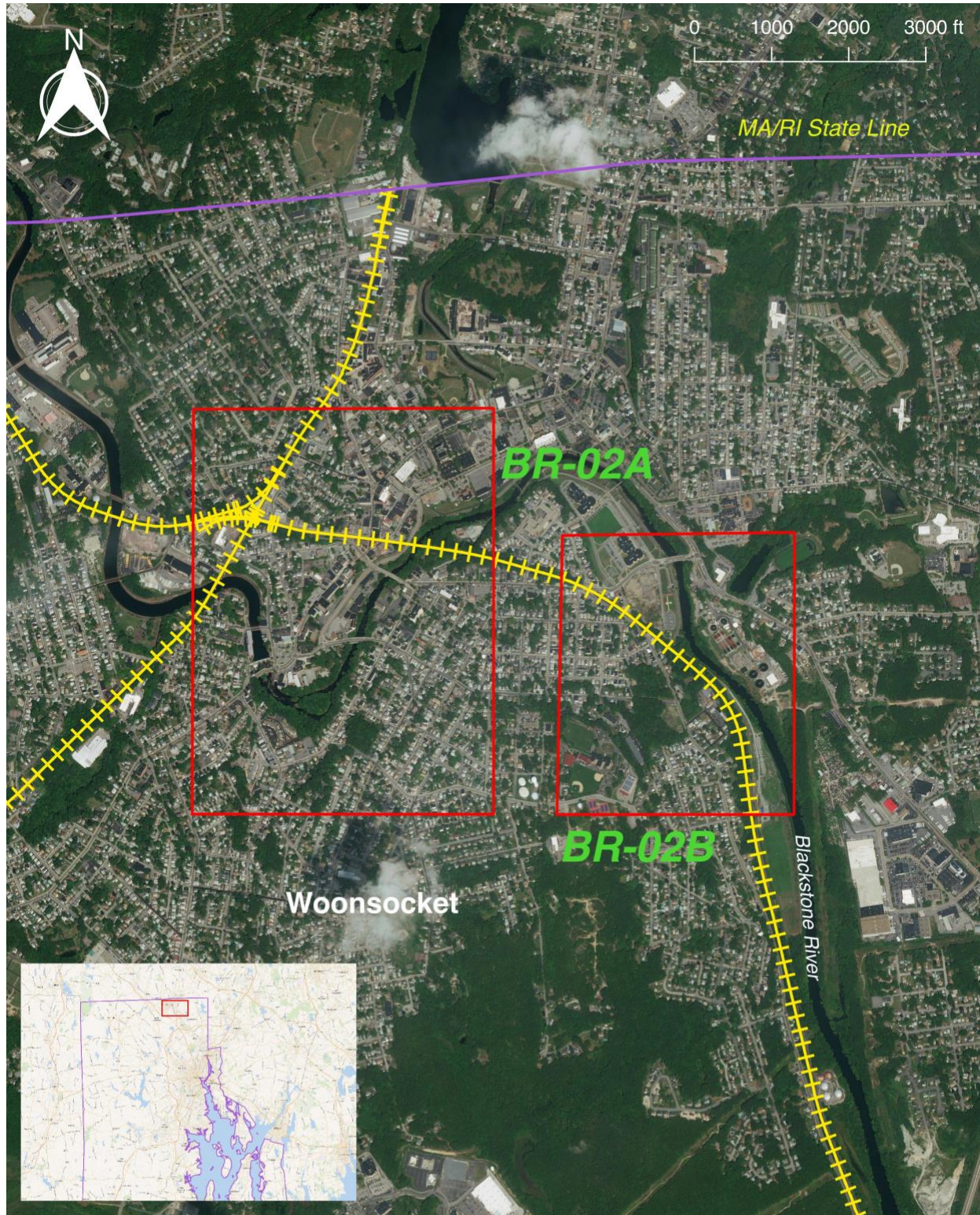




Blackstone River Geographic Response Plan

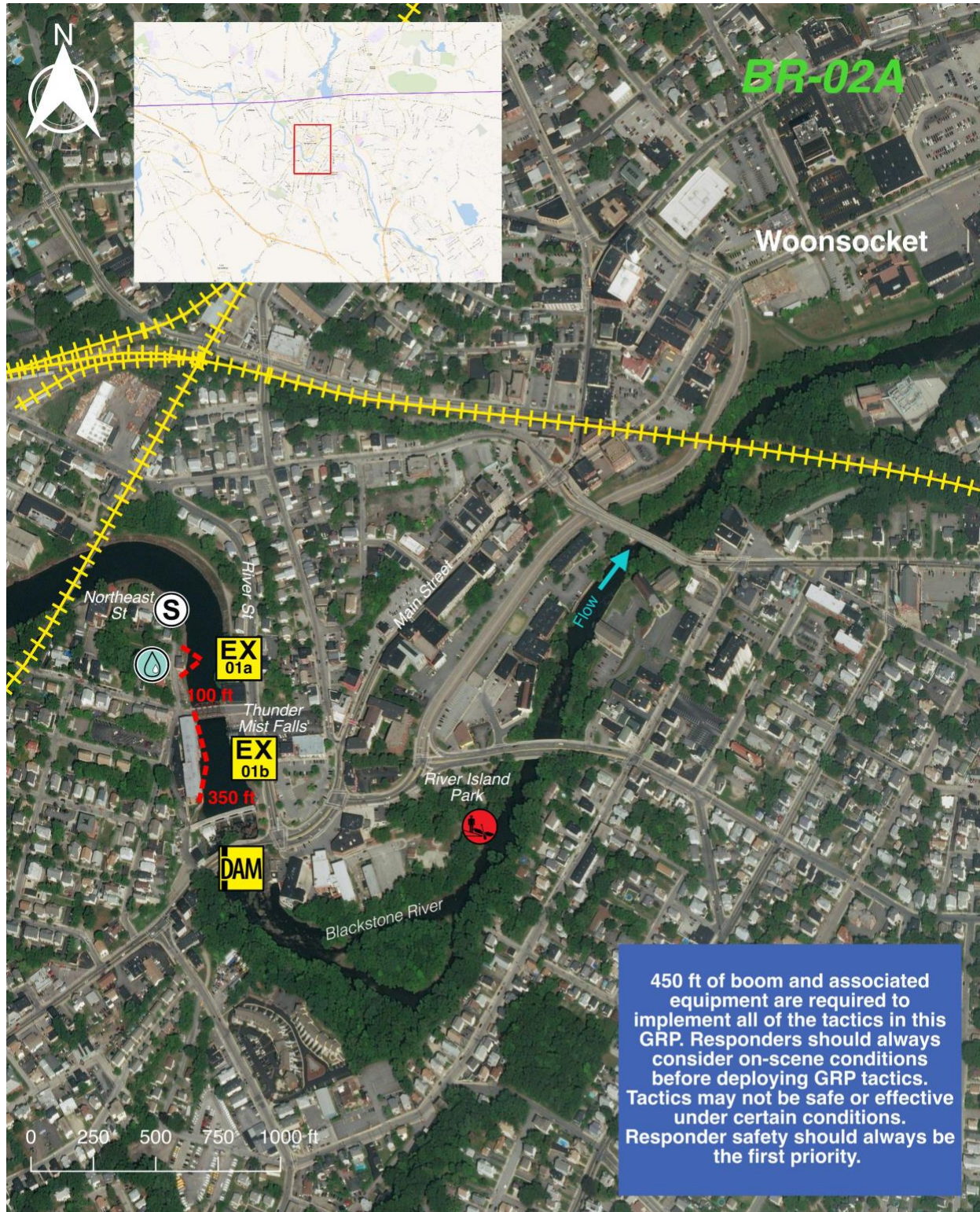
Woonsocket East BR-02



LEGEND

DV	Diversion Booming	Protected-water Boom	Railroad	Kayak Launch
EX	Exclusion Booming	SR	Boat Ramp	Staging Area
CB	Culvert Blocking	Water Treatment Facility		





LEGEND	DV Diversion Booming	Protected-water Boom	Railroad	Kayak Launch
	EX Exclusion Booming	Shoreside Recovery	Boat Ramp	Staging Area
	CB Culvert Blocking	Water Treatment Facility		










Blackstone River Geographic Response Plan
Woonsocket East BR-02



ID	Location and Description	Response Strategy	Implementation
BR-02-01 	Woonsocket a.) Ocean State Power Lat. 42° 0'4.20"N Lon. 71°31'6.53"W b.) Glenark Mills Lat. 42° 0'0.19"N Lon. 71°31'5.64"W	Exclusion Set boom across entrances to creeks, inlets, coves and near water treatment facilities to prevent oil from migrating into sensitive areas and critical infrastructure. Adjust the angle and length of boom depending on oil trajectory, river flow rate, and wind.	For (a) Deploy 100 ft. of 12” – 18” boom as depicted to prevent oil from impacting the water intake. For (b) Deploy 350 ft. of 12” – 18” boom as depicted to prevent oil from impacting the shoreline and structures associated with the Glenark Mills historical site. Secure with anchor stakes on shore and anchors in midstream. Deploy passive recovery using sorbents at attachment points to minimize leakage.
BR-02-02 	Woonsocket Rivers Edge – Lat. 41°59'51.36"N Lon. 71°29'39.29"W	Divert and Collect – Shoreside Divert incoming oil to shoreside recovery locations to protect downstream areas along the Blackstone River.	Deploy anchors and boom with skiffs. Deploy 400 ft. of 12” – 18” boom in a single leg at the proper angle to divert incoming oil to the collection site.
BR-02 	Same as BR-02-02	Shoreside Recovery - Remove spilled oil that has been diverted to the designated recovery site accessible from shore.	Deploy skimming system(s) appropriate for the operating environment and temporary oil storage system in designated location. Oil spill contractor resources will be required to implement Shoreside Recovery tactics.





Blackstone River Geographic Response Plan
Woonsocket East BR-02



Response Resources	Staging Area Site Access	Resources Protected	Special Considerations	ID
<p>Deployment <i>Equipment</i> 450 ft. 12"-18" boom 2 anchor sets* 8 anchor stakes** <i>Vessels</i> 1 work boat or skiff <i>Personnel/Shift</i> 2 vessel crew (per vessel)/2 shoreside responders</p> <p>Tending <i>Vessels</i> 1 work boat or skiff <i>Personnel/Shift</i> 2 vessel crew (per vessel)/2 shoreside responders</p>	<p>Staging Area: Northeast St. adjacent to Ocean State Power facility and Glenark Mills Apartments, 104 Sayles St., Woonsocket, RI</p>	<p>Cultural Resources – Historical Site Human use - Boat Ramp, Critical Infrastructure, Dam, Park, Railroad, Water intake Land Management – Conservation Area, Non-Community Wellhead Protection Area, Residential Shoreline Habitat - Wetlands</p>	<p>River conditions including flow rate and flood stage vary depending on time of year and heavy rain and/or snowfall. Survey site prior to deployment and modify deployment tactics and techniques as appropriate based on observed river conditions. If ice is present GRP tactics and strategies must be reevaluated. Vessel operators should have local knowledge and experience operating in riverine environments.</p> <p>Entire site surveyed: 04/23/18 Field tested: No</p>	<p>BR-02-01</p> <p>EX</p>
<p>Deployment <i>Equipment</i> 400 ft. 12"-18" boom 1-2 anchor sets* 4 anchor stakes** 1 shoreside recovery system <i>Vessels</i> 2 work boats or skiffs <i>Personnel/Shift</i> 2 vessel crew (per vessel)/2 shoreside responders</p> <p>Tending <i>Vessels</i> 1 work boat or skiff <i>Personnel/Shift</i> 2 vessel crew (per vessel)/2 shoreside responders</p> <p>*Anchor at end of each boom section and every 200 ft. ** Use two anchor stakes at end of each boom section</p>	<p>Staging Area: Rivers Edge Recreation Complex Boat Ramp, 176 Davison Ave., Woonsocket, RI</p>	<p>Same as BR-02-01</p>	<p>Same as BR-02-01</p>	<p>BR-02-02</p> <p>DV</p>
<p>Deployment <i>Equipment (All sites)</i> 1 shoreside recovery system <i>Vehicles</i> 1 truck or truck with trailer <i>Personnel/Shift*</i> 2-5 shoreside responders (depending on recovery system and hours of operation)</p>	<p>Same as BR-02-01</p>	<p>Same as BR-02-01</p>	<p>Same as BR-02-01</p>	<p>BR-02</p> <p>SR</p>





Site Photographs and Contact Information



Site of EX-01b at Glenark Mill Historic Site



Site of DV-02 at Rivers Edge Recreation Complex looking upriver



Boat Ramp at Rivers Edge Rec Complex (site of DV-02)



Site of DV-02 looking upriver

CONTACT INFORMATION:

Woonsocket FD: 401-765-2500

Woonsocket Emergency Management: 401-766-1212

Woonsocket Water Dpt.: 401-767-9217

RI DEM Emergency Response: 401-222-1360 (day)

RI DEM Emergency Response: 401-222-3070 (after hours)

RI DEM Water Resources: 401-222-3961 (day)

RI DEM Freshwater Fish & Wildlife: 401-789-0281 (day)

RI Historical Pres. & Heritage Comm.: 401-222-2678

RI Emergency Management Agency: 401-946-9996

National Response Center: 800-424-8802

Blackstone River GRPs have been incorporated into EPA Region One's Inland Area Contingency Plan (ACP) and is available at the following website: https://nrtqa.ert.org/site/doc_list.aspx?site_id=38 or accessed via QR reader-enabled smartphones by scanning the QR code at right.

