

**PEST ALERT**

## Asian Giant Hornet (*Vespa mandarinia*)



[USDA Photo by Hanna Royals]

**Asian Giant Hornet**

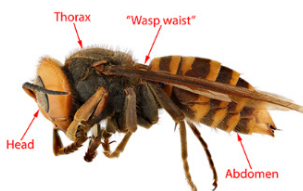


Photo: "Vespa mandarinia in Japan" by Alpsdake is licensed under CC BY-SA 3.0

The Asian Giant Hornet is a new introduction to the United States, first noticed in December 2019 in Blaine, WA. At this point, there is no evidence of an established population anywhere else in the United States. More research is needed to determine if these insects can survive in Rhode Island's climate, and there is little risk of them being present here in 2020. These hornets are large, with a body that measures 1.5 to 2 inches. While they do have a powerful sting and people with an allergy to bee or wasp stings should take caution, they are no more aggressive than our native wasps.

**LOOK FOR:**

- Large wasps about 1.25 to nearly 2 inches long
- Large, yellow-orange head
- Significant numbers of killed honeybees in or around a hive - typically snipped into pieces.

**Asian Giant Hornet has not been found in Rhode Island**

For more information on the Asian Giant Hornet and additional details on look-alike insects, visit [www.aphis.usda.gov/planthealth/agh](http://www.aphis.usda.gov/planthealth/agh)

Updated: June 2020

### Common lookalikes of Rhode Island

 <p><b>Asian Giant Hornet</b> Abdomen has solid bands</p>	 <p><b>Eastern Cicada Killer</b> Black and yellow bands. Black bands form distinctive shapes.</p>	 <p><b>European Hornet</b> Mostly black abdomen with yellow coloration - no bands.</p>
--	---	---

In Rhode Island, there are several native wasps and hornets that can resemble the Giant Asian Hornet but are not a threat to wildlife or our ecosystem. In fact, many of these native species are considered beneficial. The two most mistaken insects in our environment are the **Eastern Cicada Killer** (*Sphecius speciosus*) and the **European Hornet** (*Vespa crabro*). Both are pictured above.

If you suspect you have found an invasive pest, please report it to us at

**[dem.ri.gov/pestalert](http://dem.ri.gov/pestalert)**