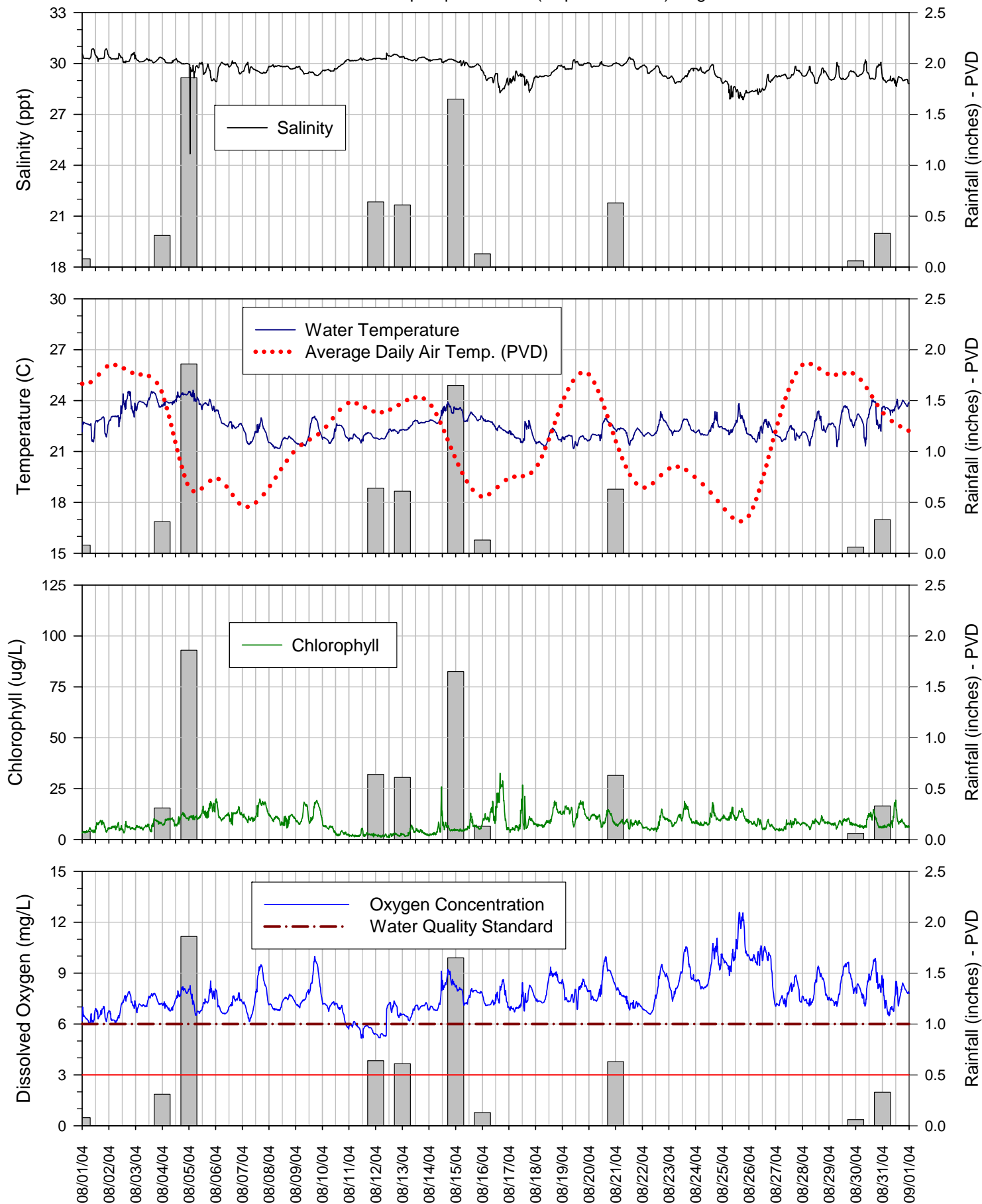
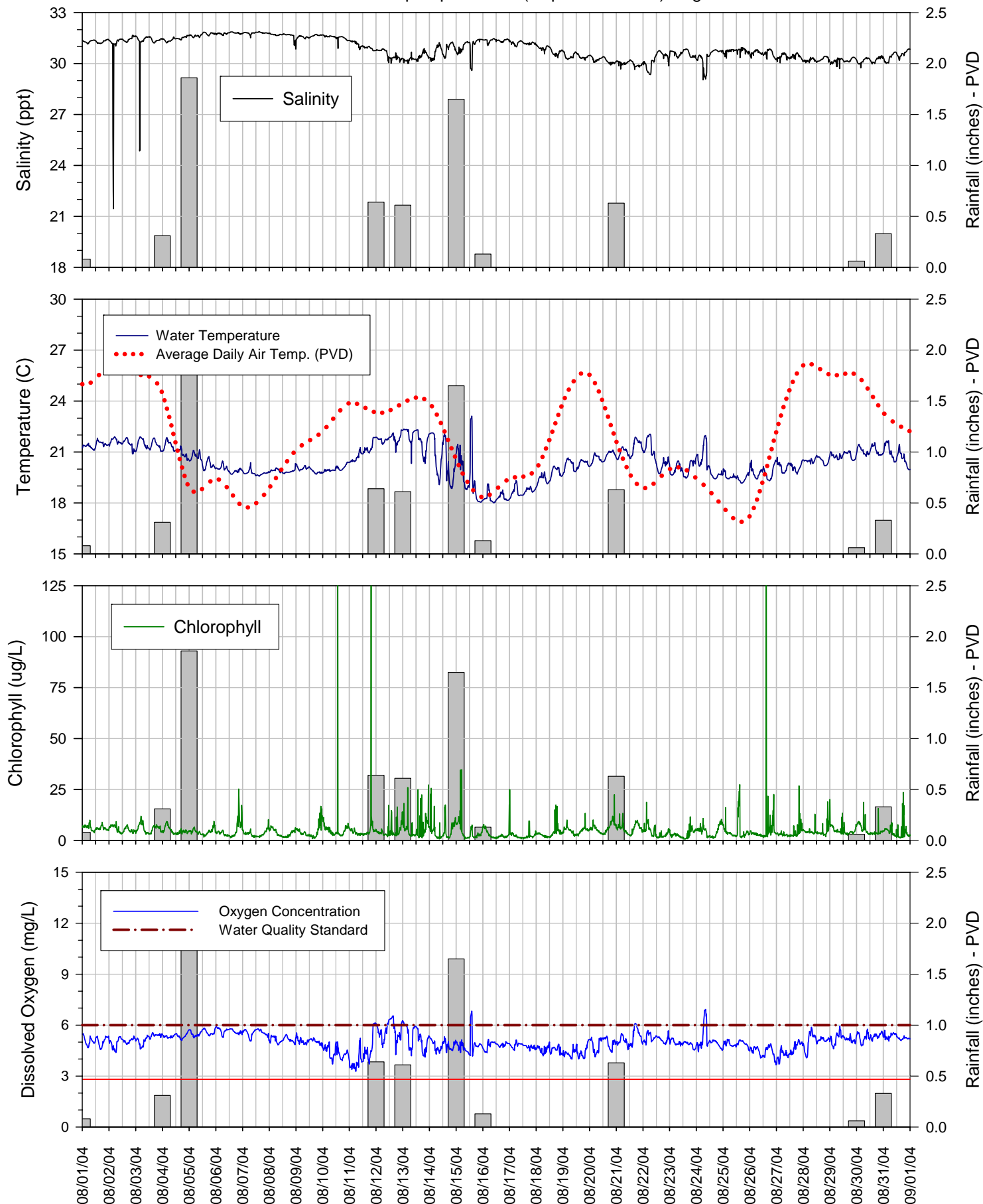


Surface Sonde at Popasquash Point (Depth ~1 meter) August 2004



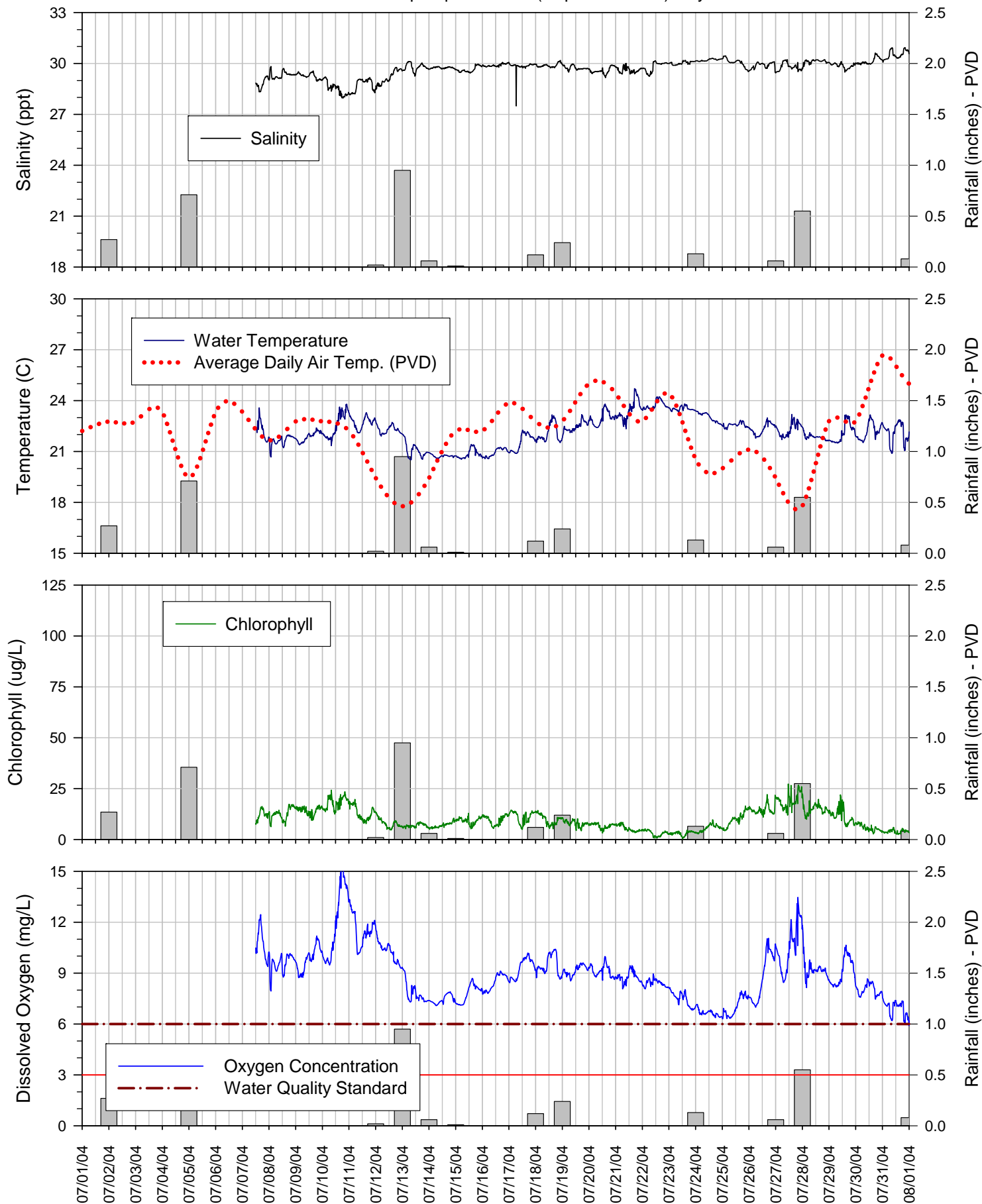
The data displayed on this chart is provisional and is subject to change based on post-season quality control analyses. This station is maintained by RIDEM - Office of Water Resources.

Bottom Sonde at Popasquah Point (Depth ~8 meters) August 2004



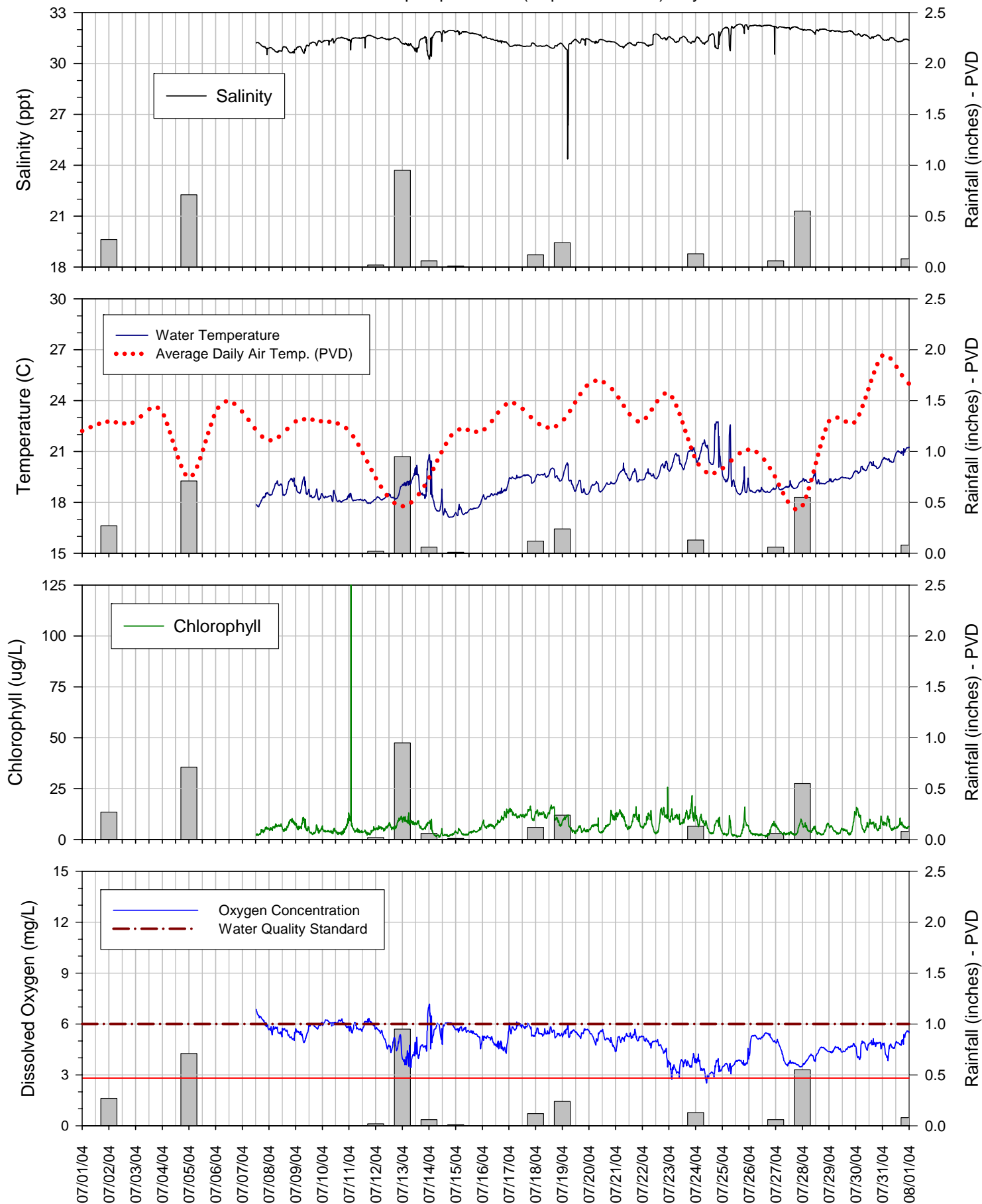
The data displayed on this chart is provisional and is subject to change based on post-season quality control analyses. This station is maintained by RIDEM - Office of Water Resources.

Surface Sonde at Popasquash Point (Depth ~1 meter) July 2004



The data displayed on this chart is provisional and is subject to change based on post-season quality control analyses. This station is maintained by RIDEM - Office of Water Resources.

Bottom Sonde at Popasquah Point (Depth ~8 meters) July 2004



The data displayed on this chart is provisional and is subject to change based on post-season quality control analyses. This station is maintained by RIDEM - Office of Water Resources.